

1

2

3

4

D

D

C

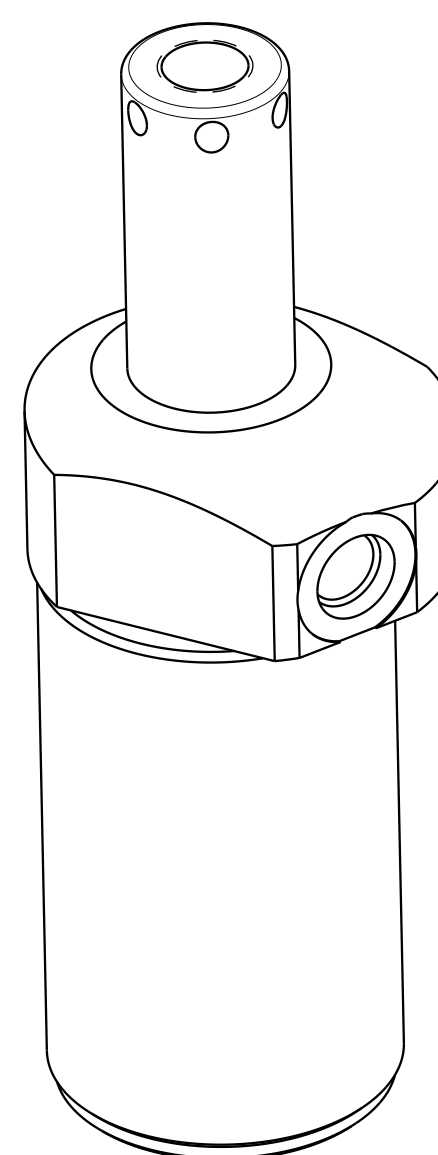
C

B

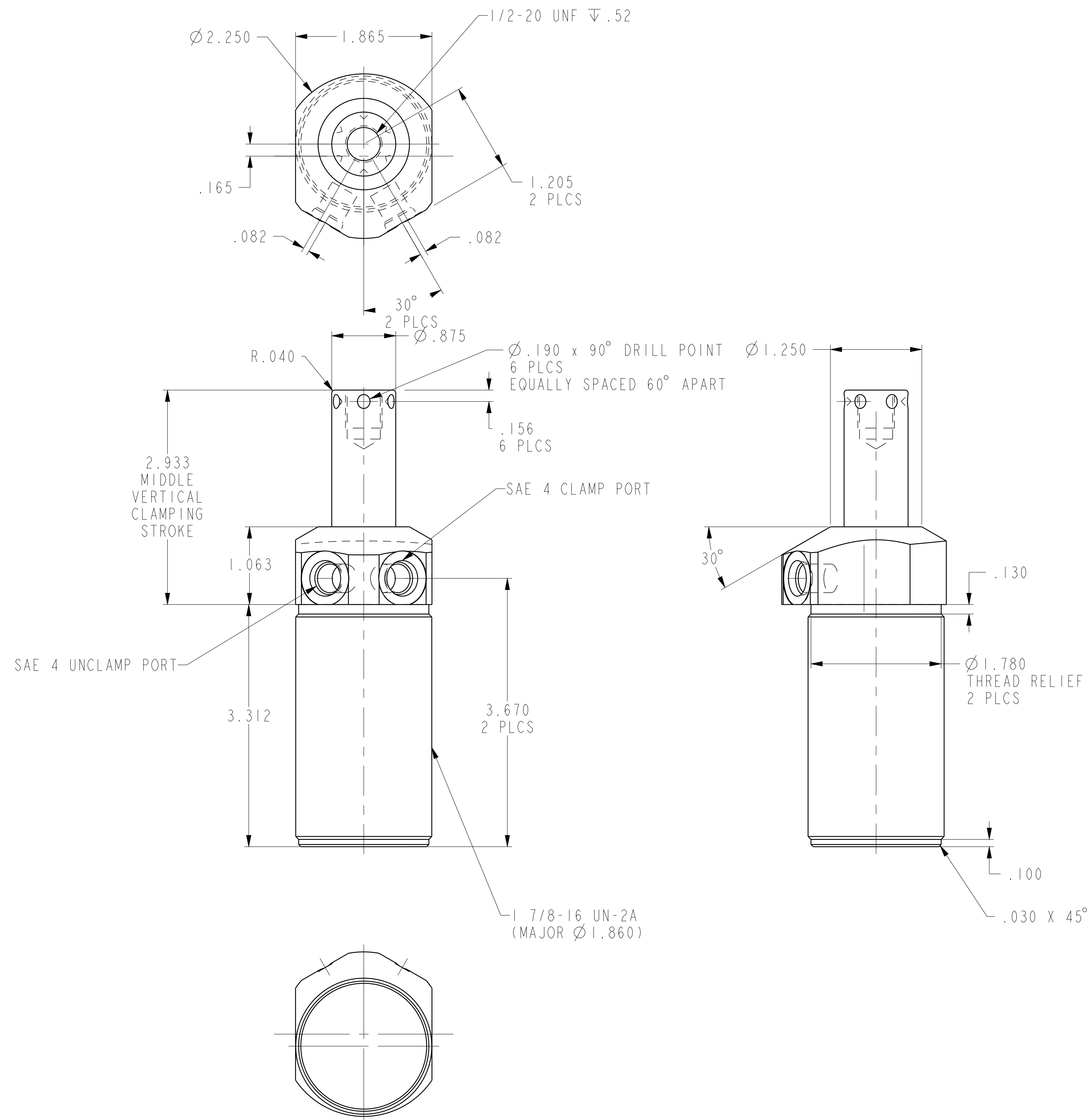
B

A

A



ILC14021301S REV A ECN 3396



CAD CONTROL DRAWING		
	VEKTEK, INC. 1334 E. SIXTH AVE. P.O. BOX 625 EMPORIA, KS. 66801 U.S.A.	

A	3396	RELEASE	JDW	01/17/18	I4021301S	A	SC, TB, DA, HS, STR, 2600
REV	IN ACCORDANCE WITH ECN	EFFECTIVE DATE	REVISED BY	DATE	REFERENCE MODEL	REF REV	
DRW BY:	JDW	DRAWING STATUS: Released			TOLERANCES DO NOT APPLY		SIZE D
DATE:	01/17/18	PRODUCTION APPROVED FOR RELEASED STATUS ONLY			DIMENSIONS ARE NOMINAL		I4021301S REV A