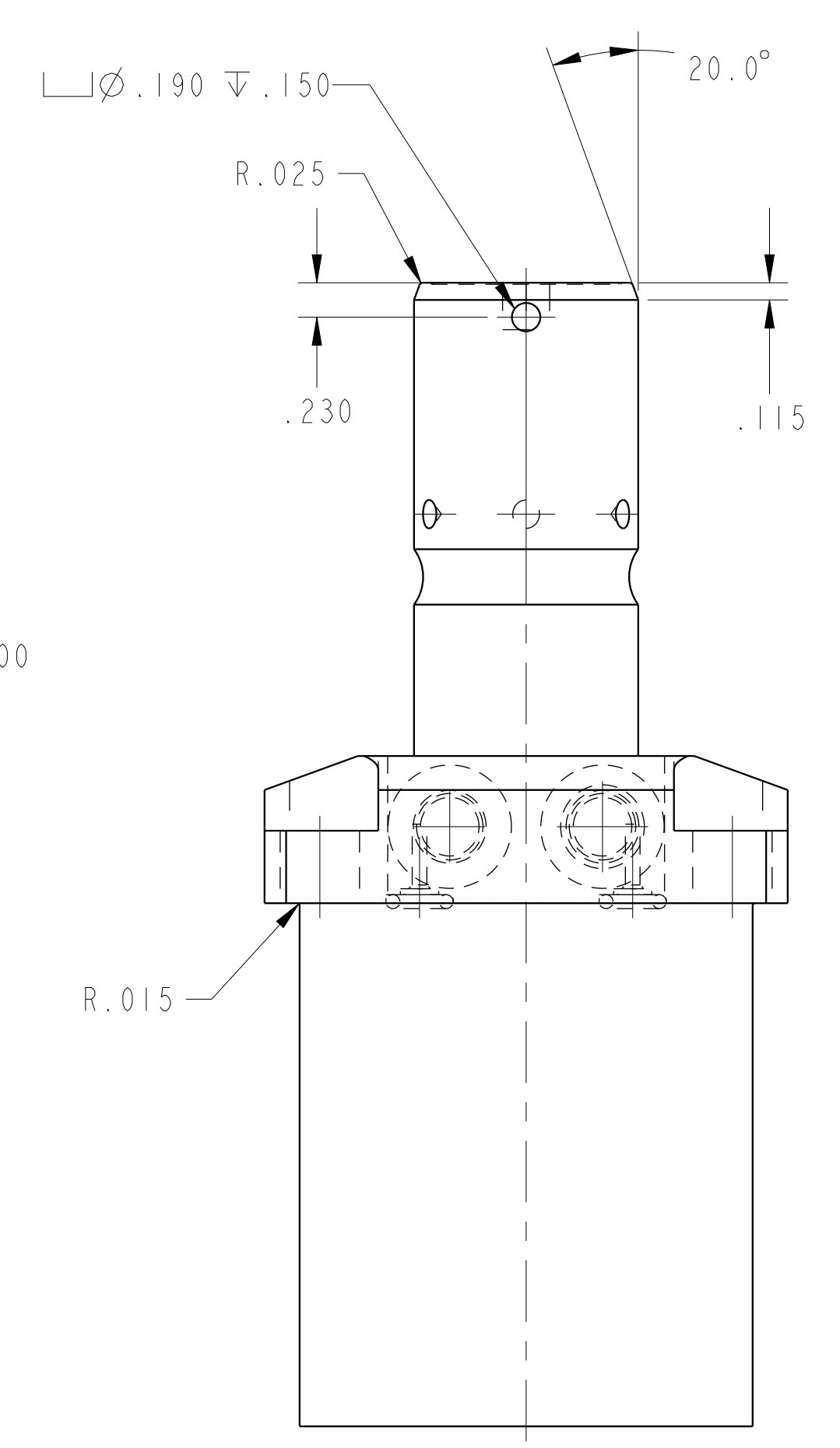
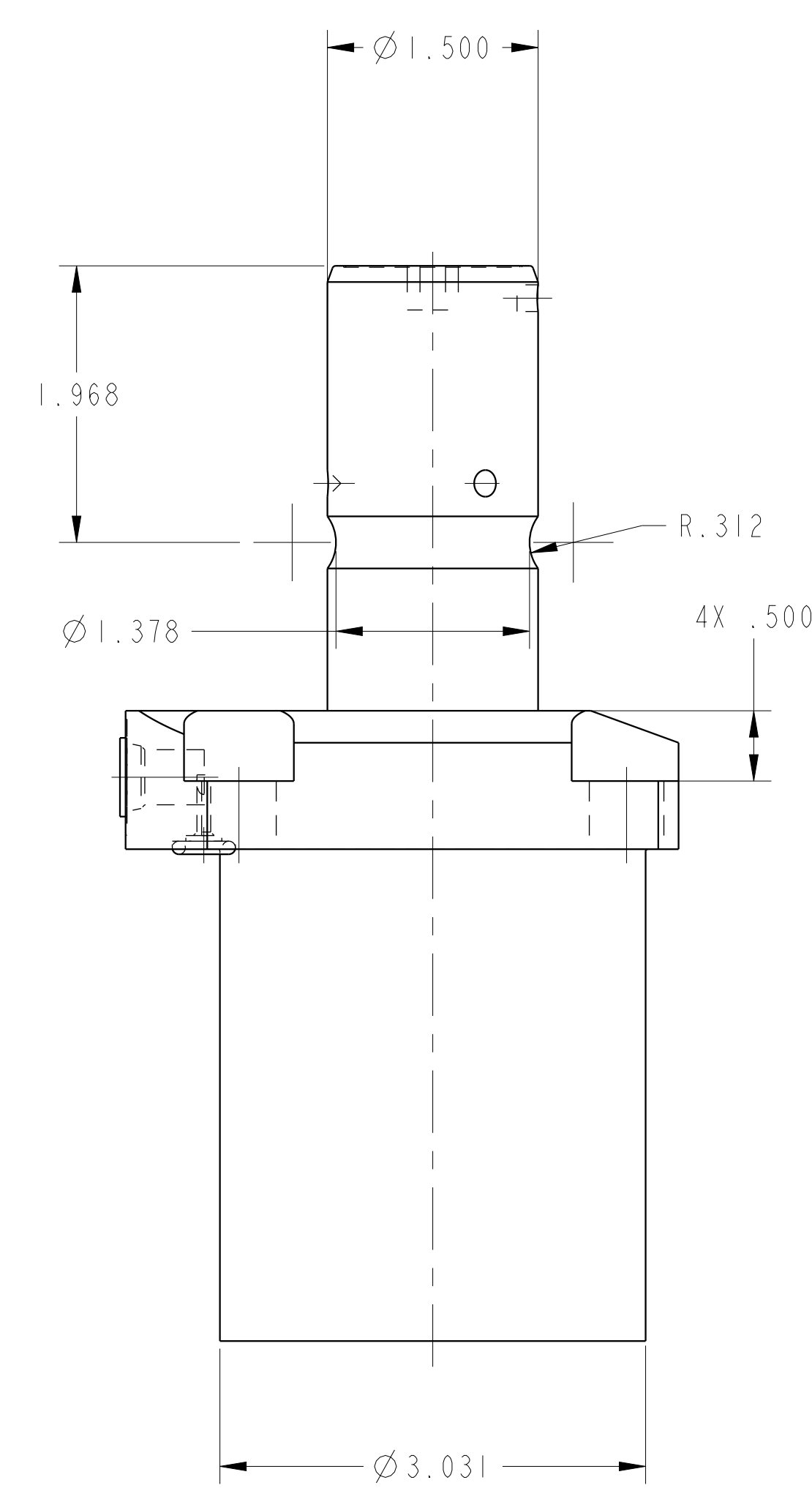
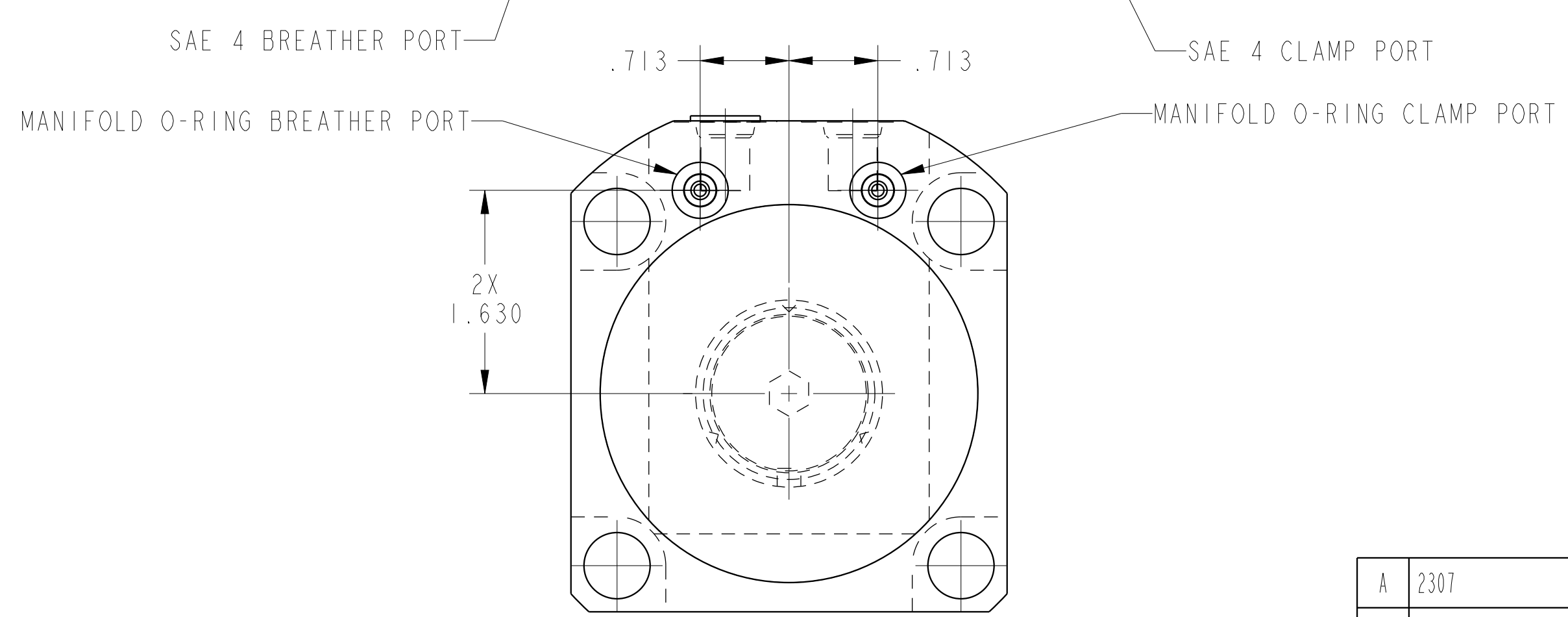
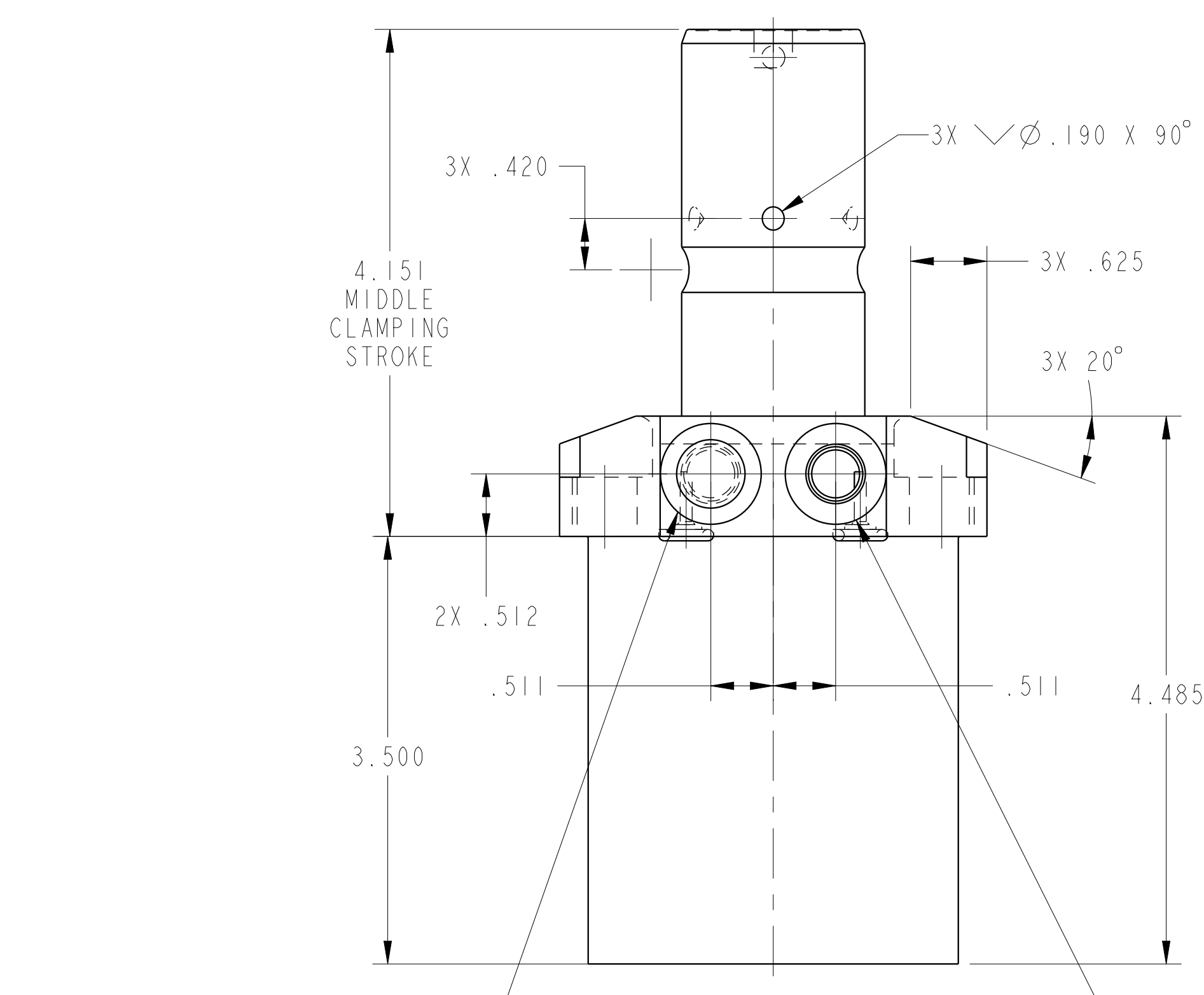
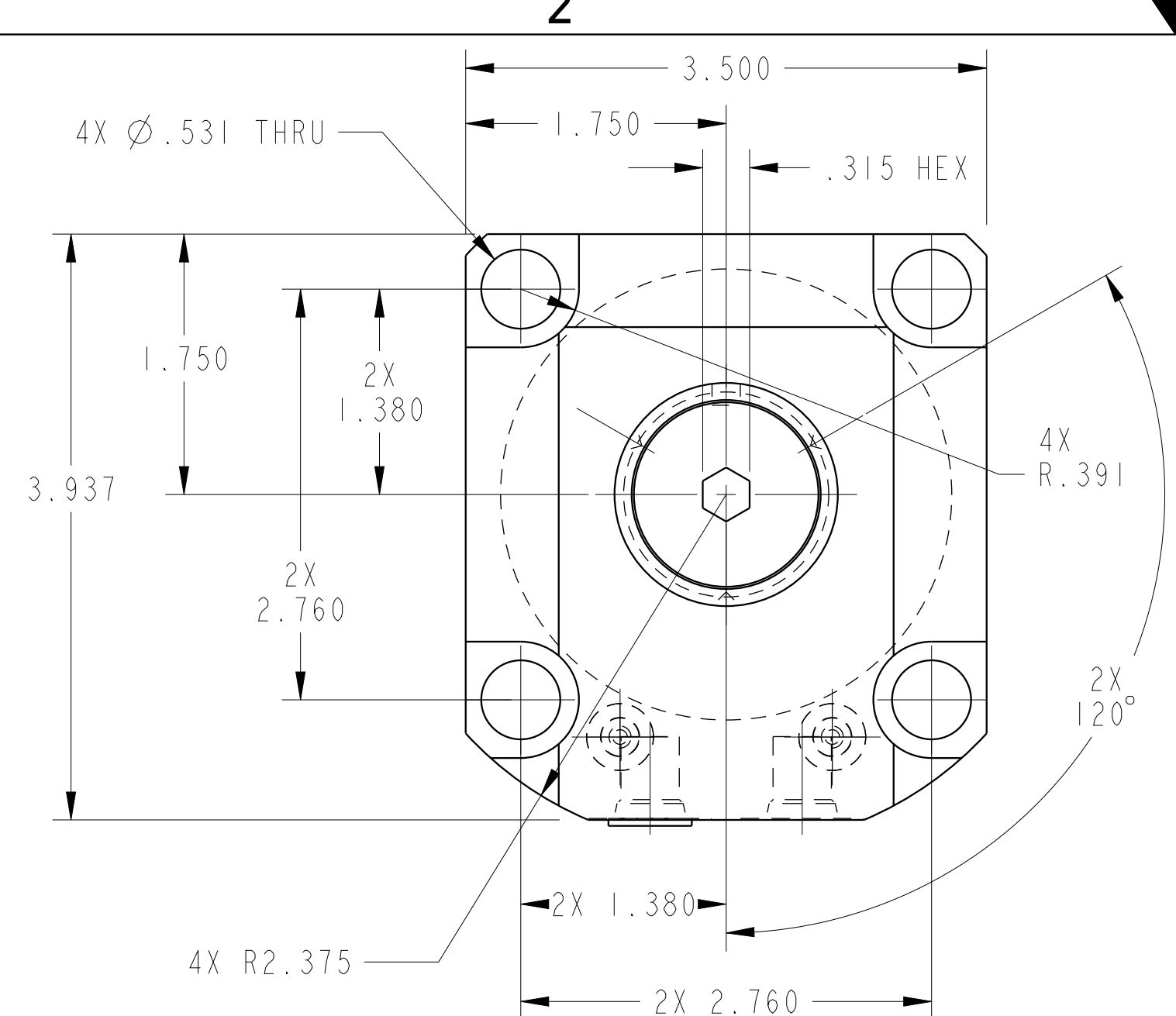
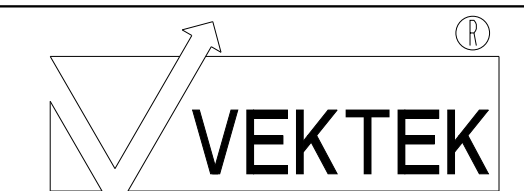


ILC14052101 REV A ECN 2307



CAD CONTROL DRAWING



VEKTEK, INC.
1334 E. SIXTH AVE. P.O. BOX 625
EMPORIA, KS. 66801 U.S.A.

| | | | | |
|---------|------------------------|--|------------|---------|
| A | 2307 | RELEASE | JDW | 7-14-11 |
| REV | IN ACCORDANCE WITH ECN | EFFECTIVE DATE | REVISED BY | DATE |
| DRW BY: | JDW | DRAWING STATUS: Released | | |
| DATE: | 7-14-11 | PRODUCTION APPROVED FOR RELEASED STATUS ONLY | | |

| | |
|---|---------|
| 14052101 | A |
| REFERENCE MODEL | REF REV |
| TOLERANCES DO NOT APPLY DIMENSIONS ARE NOMINAL | |

| | | | |
|-------------|---|---------------------|---|
| SIZE | D | REV | A |
| ILC14052101 | | FORM FEG036, Rev. B | |