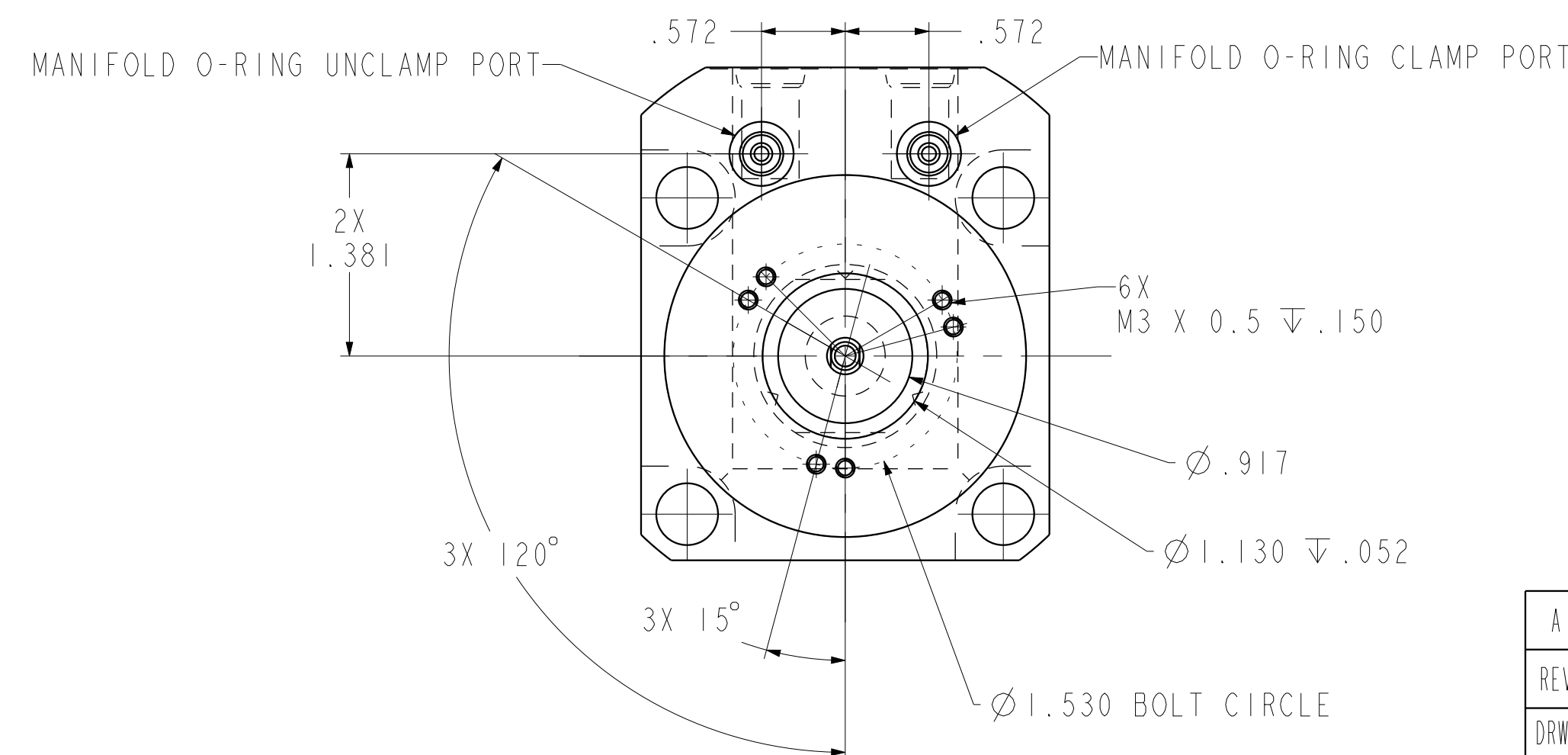
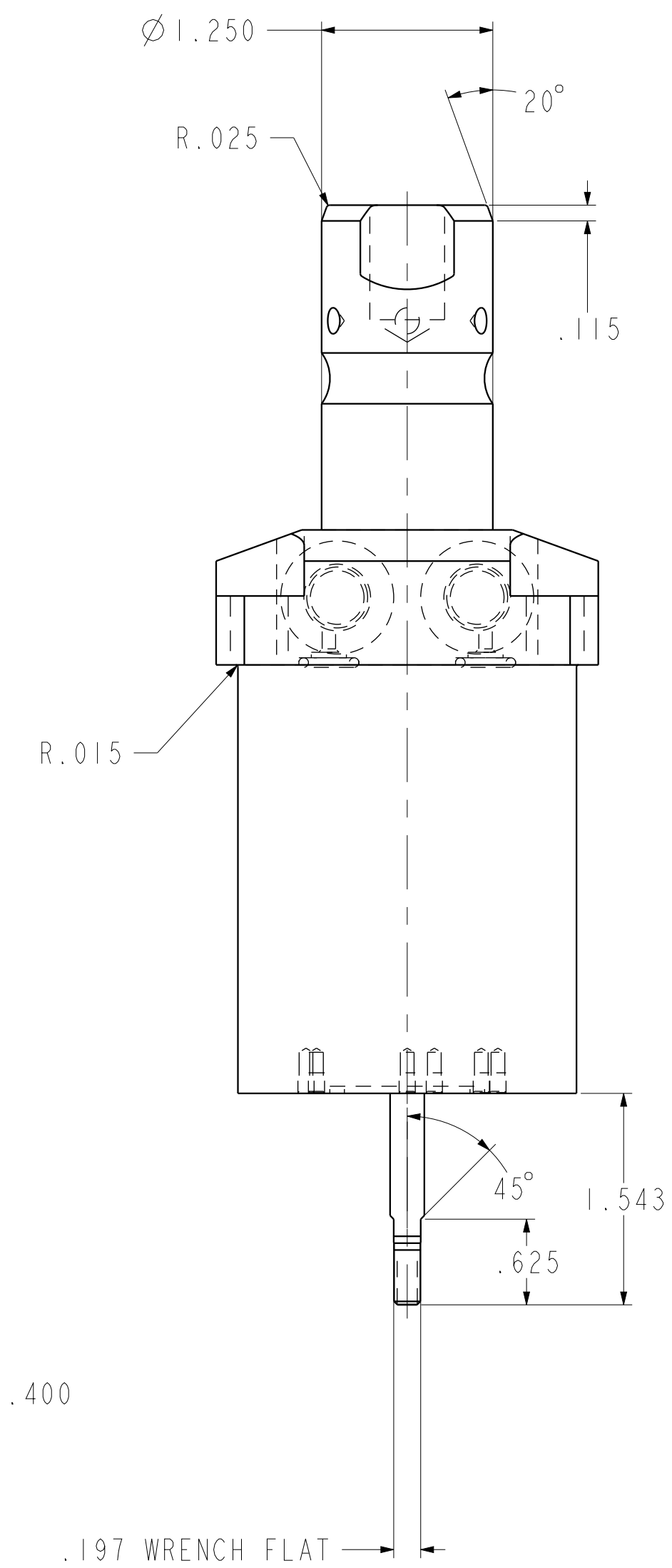
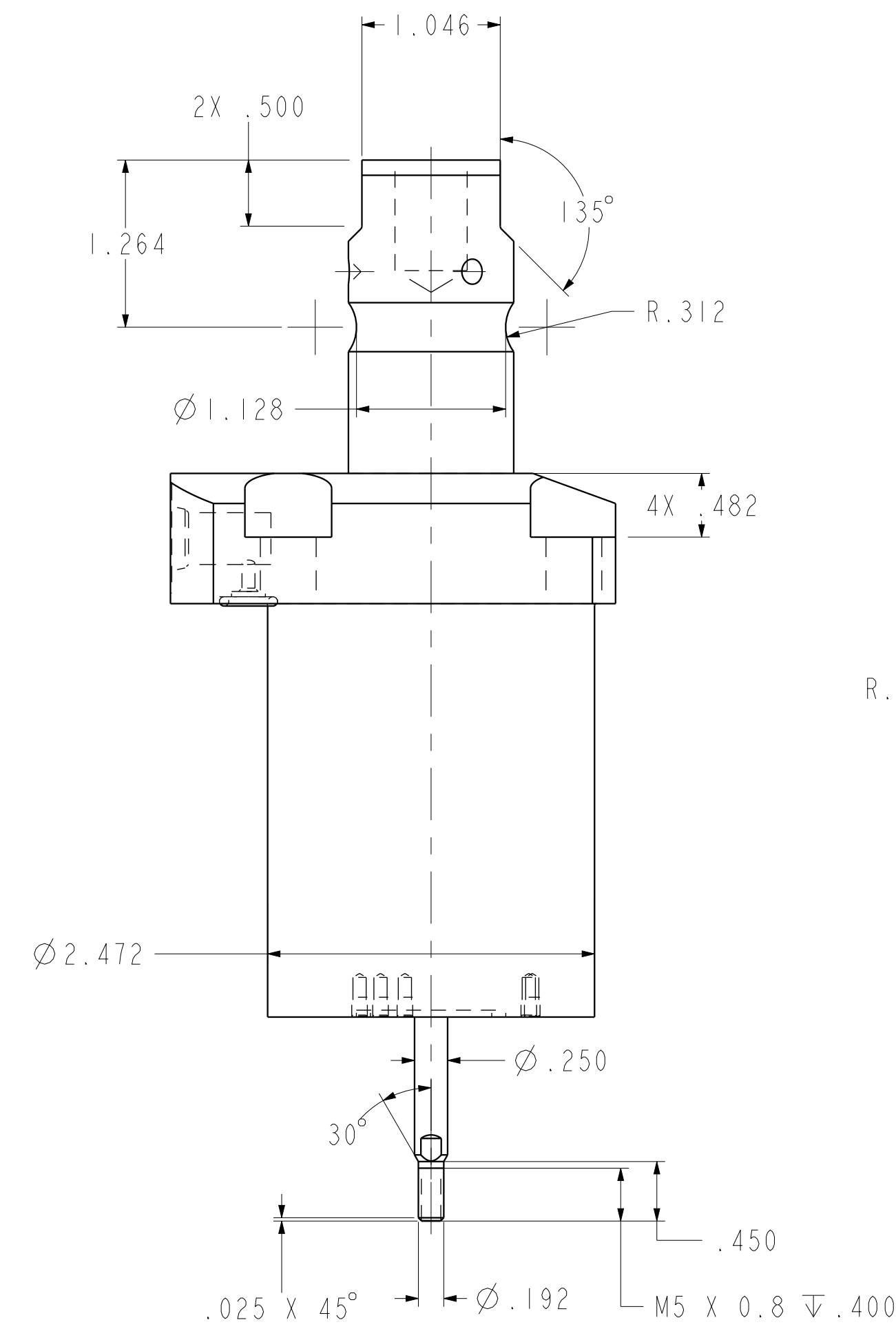
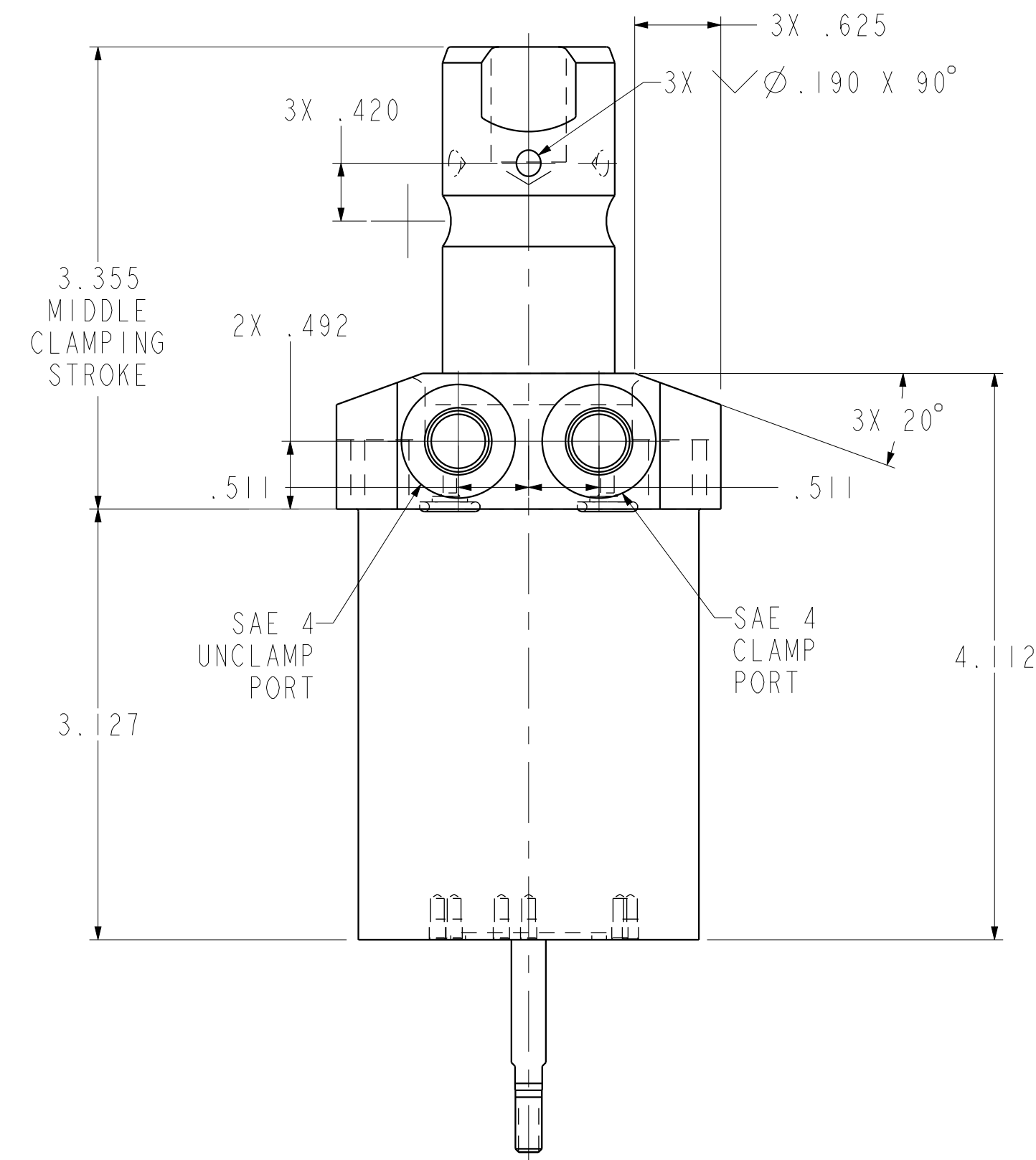
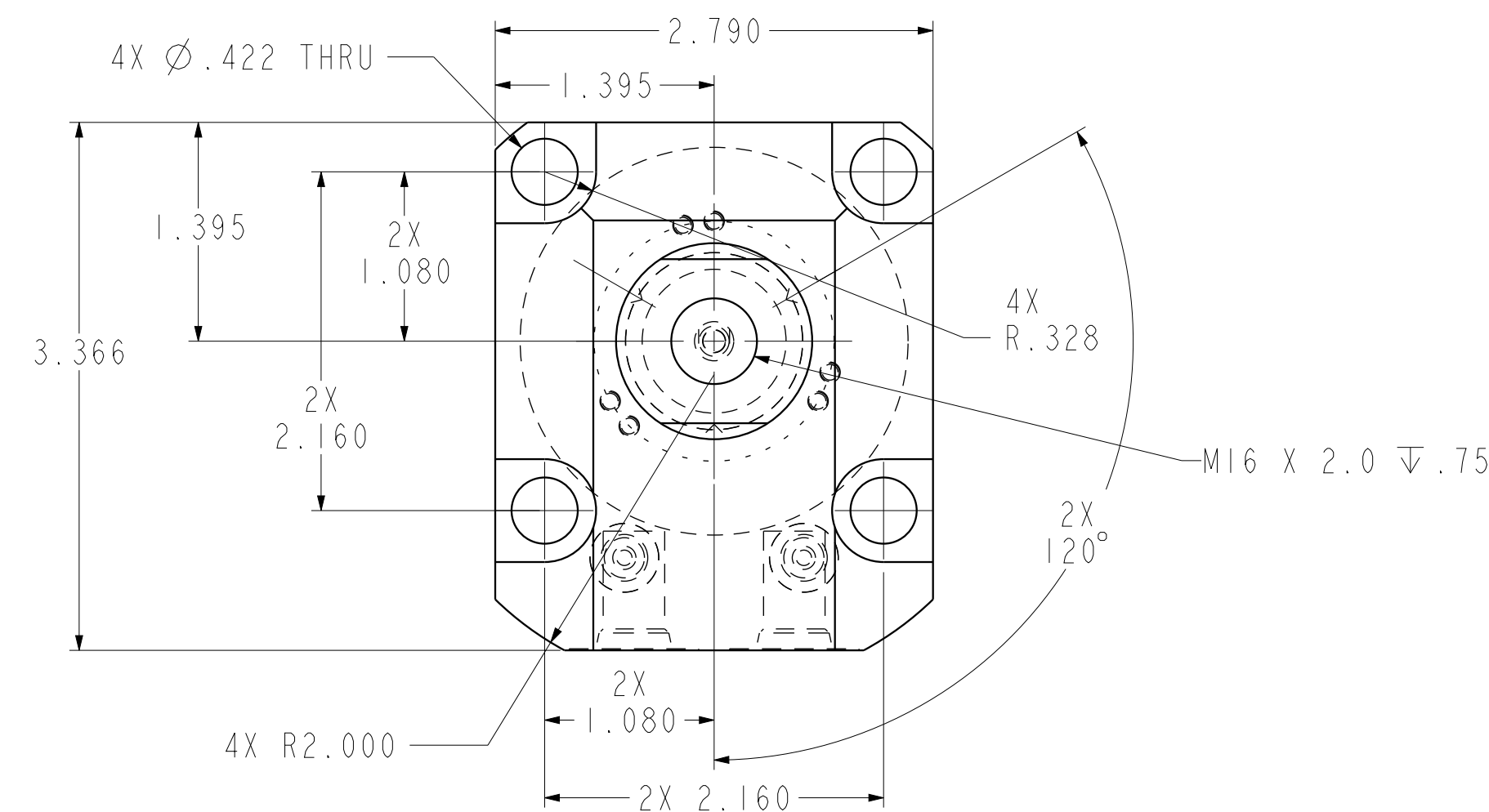


ILC14061801PR REV A ECN 3481



CAD CONTROL DRAWING



VEKTEK, INC.  
1334 E. SIXTH AVE. P.O. BOX 625  
EMPORIA, KS. 66801 U.S.A.

A	3481	RELEASE	JDW	06/02/18	14061801PR	A	SC, LP, TF, TC, 5000, DA, LH, PR
REV	IN ACCORDANCE WITH ECN	EFFECTIVE DATE	REVISED BY	DATE	REFERENCE MODEL	REF REV	
DRW BY:	JDW	DRAWING STATUS: Released			TOLERANCES DO NOT APPLY		SIZE
DATE:	06/02/18	PRODUCTION APPROVED FOR RELEASED STATUS ONLY			DIMENSIONS ARE NOMINAL		D ILC14061801PR REV A