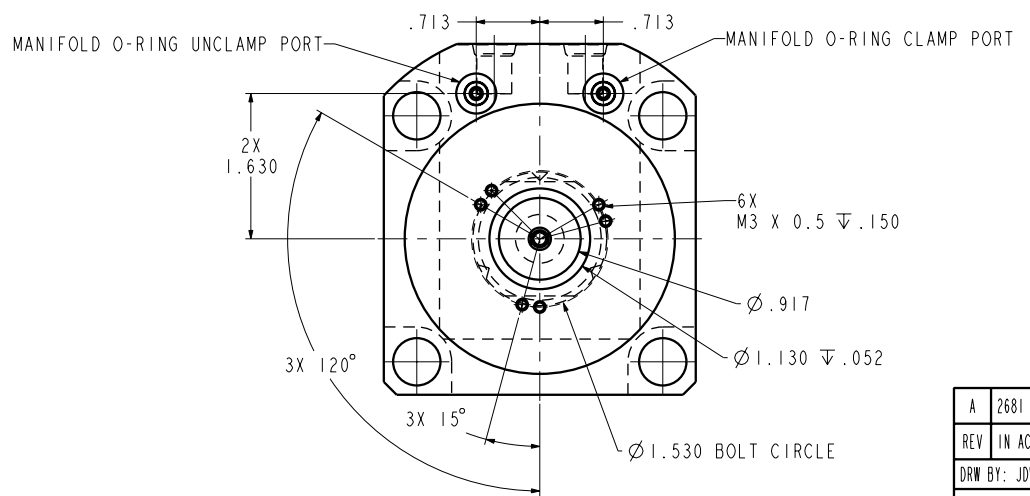


ILCI4062102PR REV A ECN 2681



REV	A	2681	RELEASE	JDW	06/30/14	14062102PR	A	SC, LP, TF, TC, 7500, DA, STR, PR
REV	IN ACCORDANCE WITH ECN		EFFECTIVE DATE	REVISED BY	DATE	REFERENCE MODEL	REF REV	
DRW BY:	JDW		DRAWING STATUS: Released			TOLERANCES DO NOT APPLY		SIZE
DATE:	06/30/14		PRODUCTION APPROVED FOR RELEASED STATUS ONLY			DIMENSIONS ARE NOMINAL		D ILCI4062102PR

CAD CONTROL DRAWING



VEKTEK, INC.
1334 E. SIXTH AVE. P.O. BOX 625
EMPORIA, KS. 66801 U.S.A.

SC, LP, TF, TC, 7500, DA, STR, PR

REV A

FORM FEG036, Rev. B