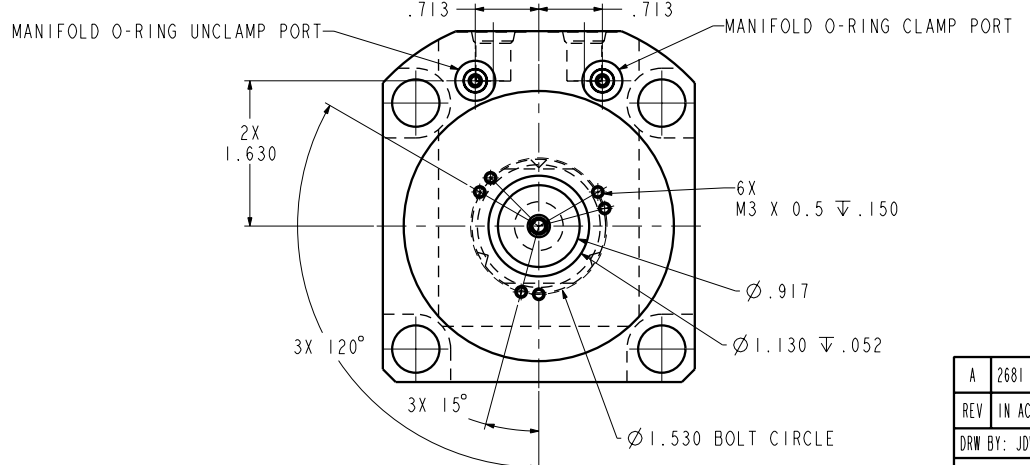


ILCI4062103PR REV A ECN 2681



CAD CONTROL DRAWING



VEKTEK, INC.
1334 E. SIXTH AVE. P.O. BOX 625
EMPORIA, KS. 66801 U.S.A.

A	2681	RELEASE	JDW	06/30/14	14062103PR	A	SC, LP, TF, TC, 7500, DA, RH, LS, PR
REV	IN ACCORDANCE WITH ECN	EFFECTIVE DATE	REVISED BY	DATE	REFERENCE MODEL	REF REV	
DRW BY:	JDW	DRAWING STATUS: Released			TOLERANCES DO NOT APPLY DIMENSIONS ARE NOMINAL		SIZE
DATE:	06/30/14	PRODUCTION APPROVED FOR RELEASED STATUS ONLY			D	ILCI4062103PR	REV A

FORM FEG036, Rev. B