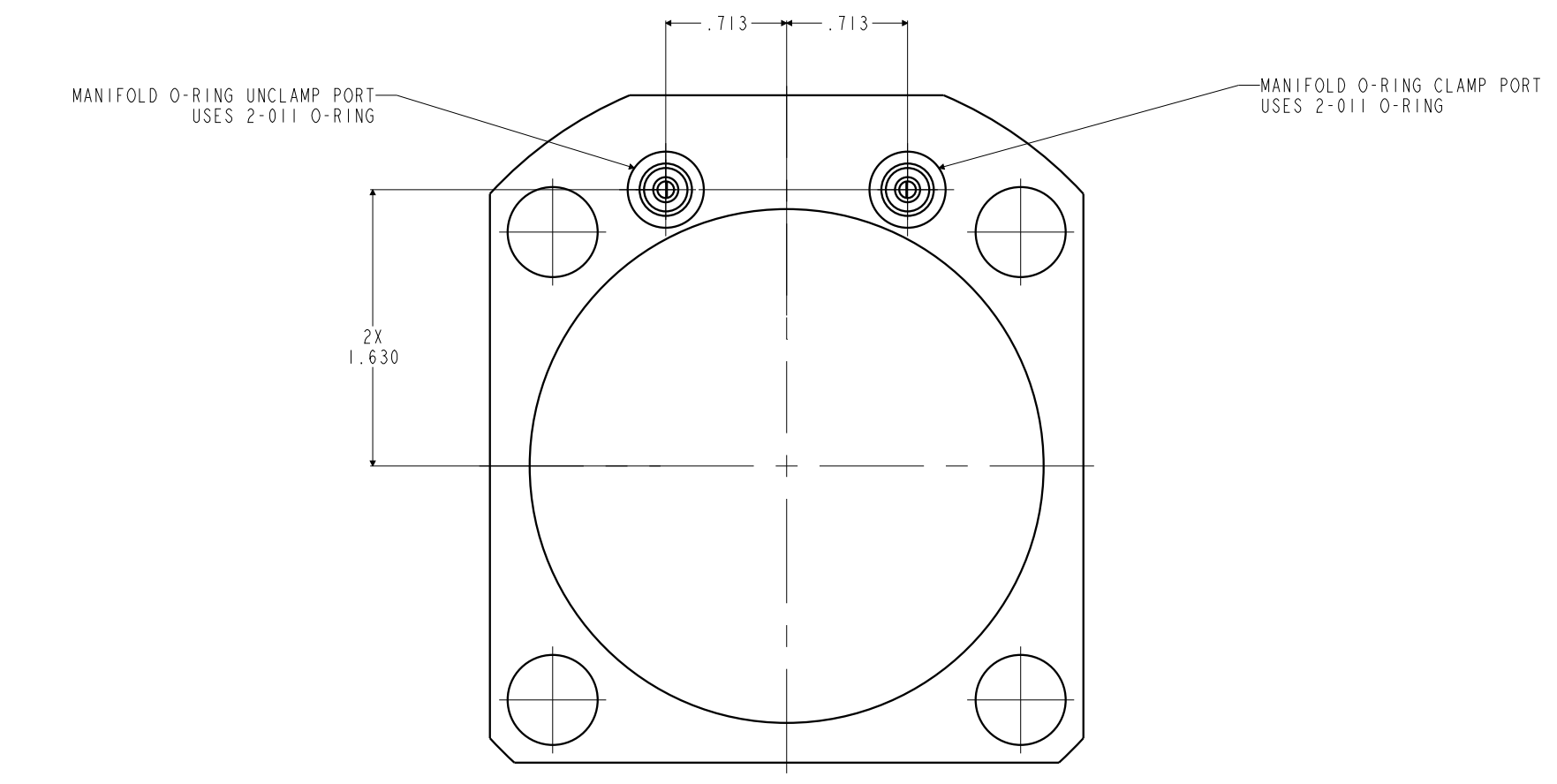
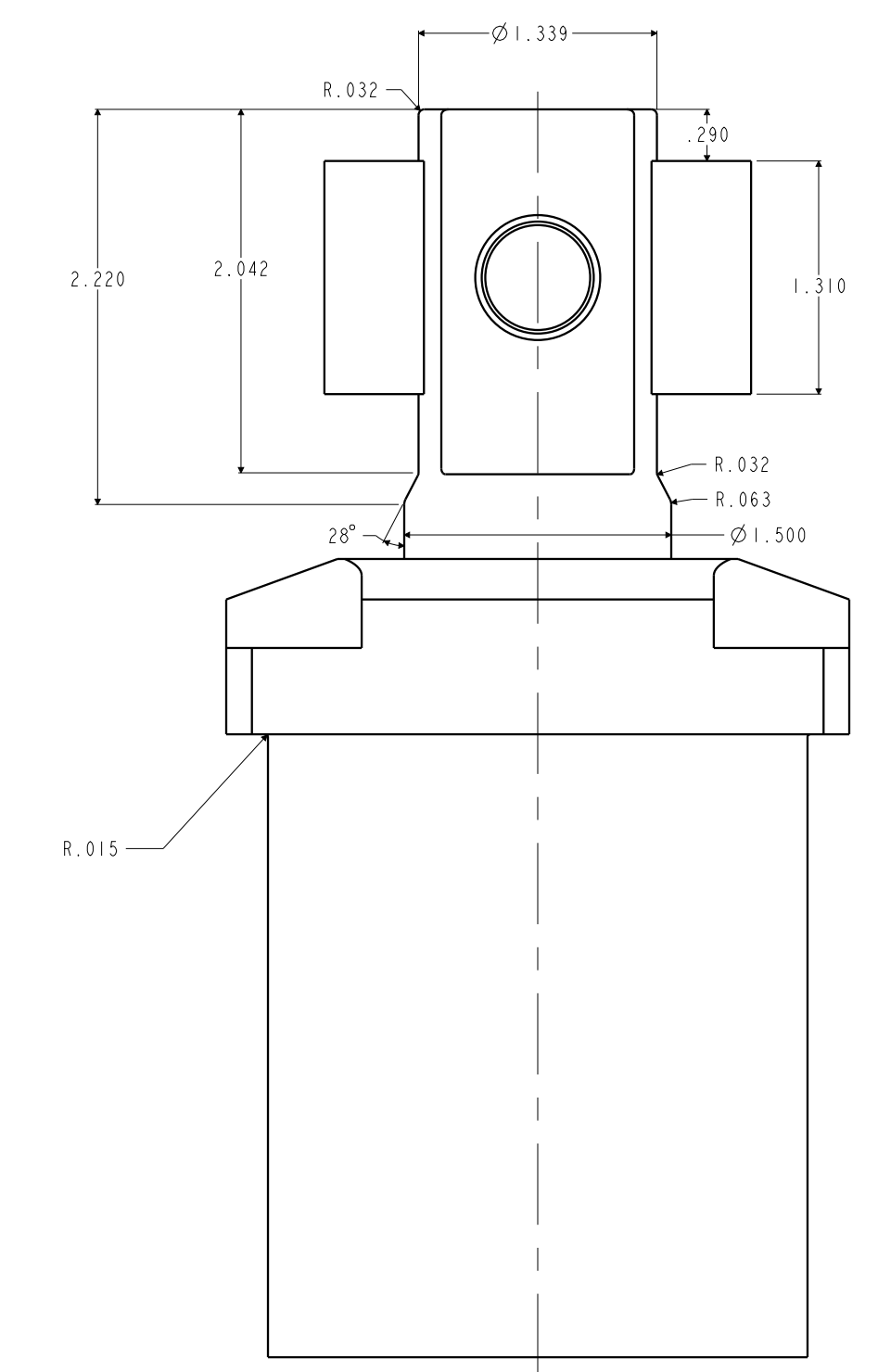
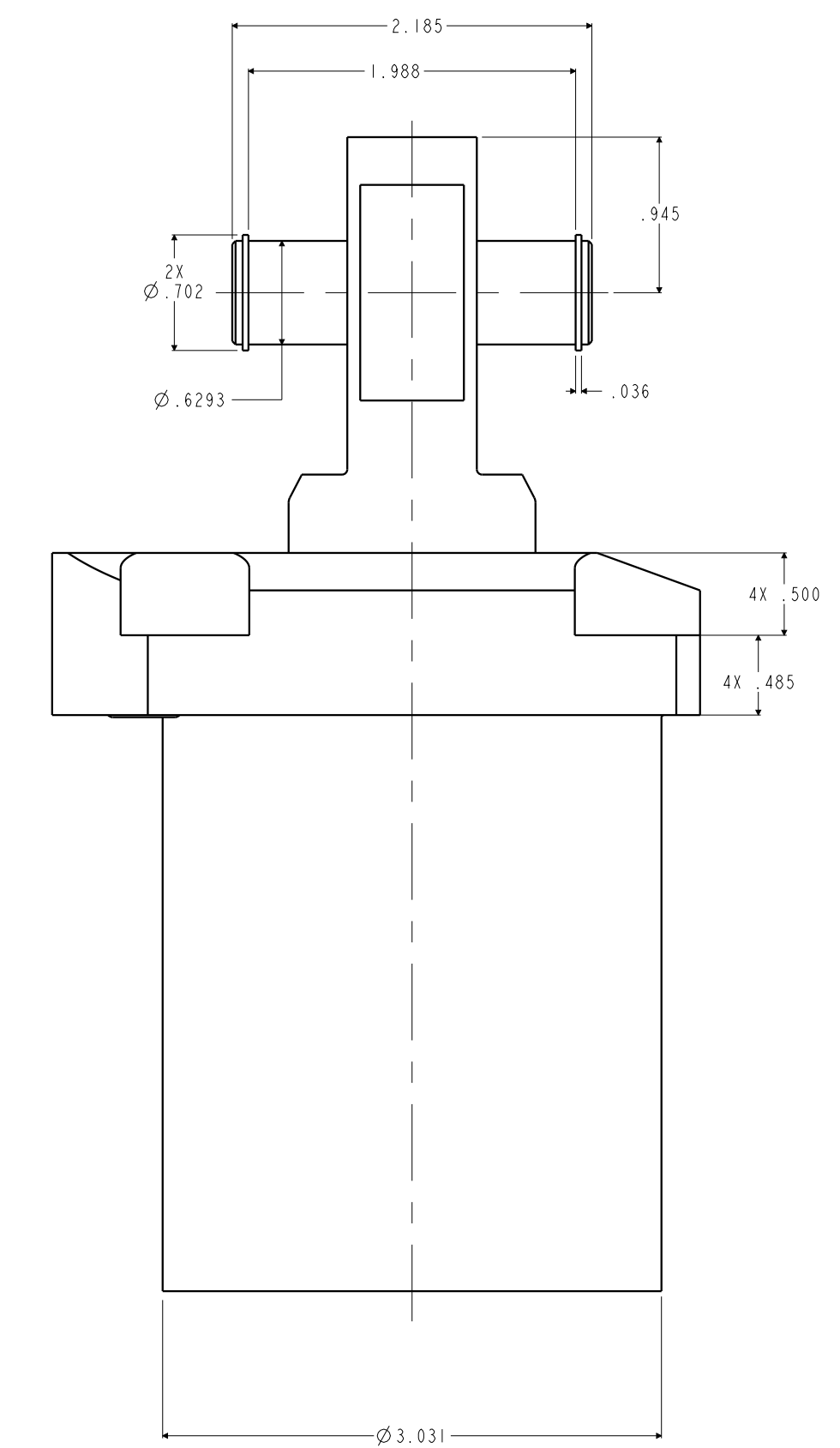
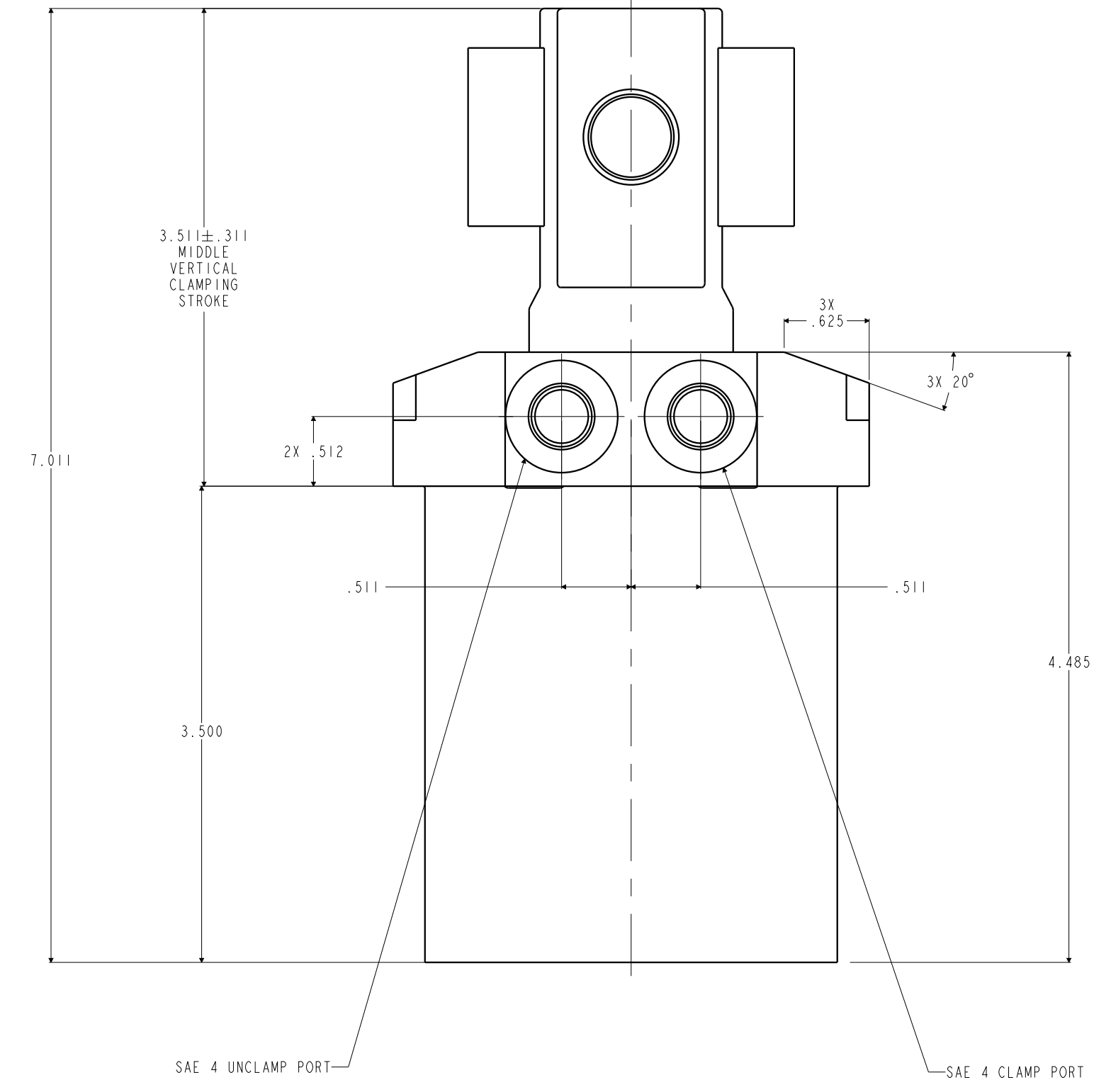
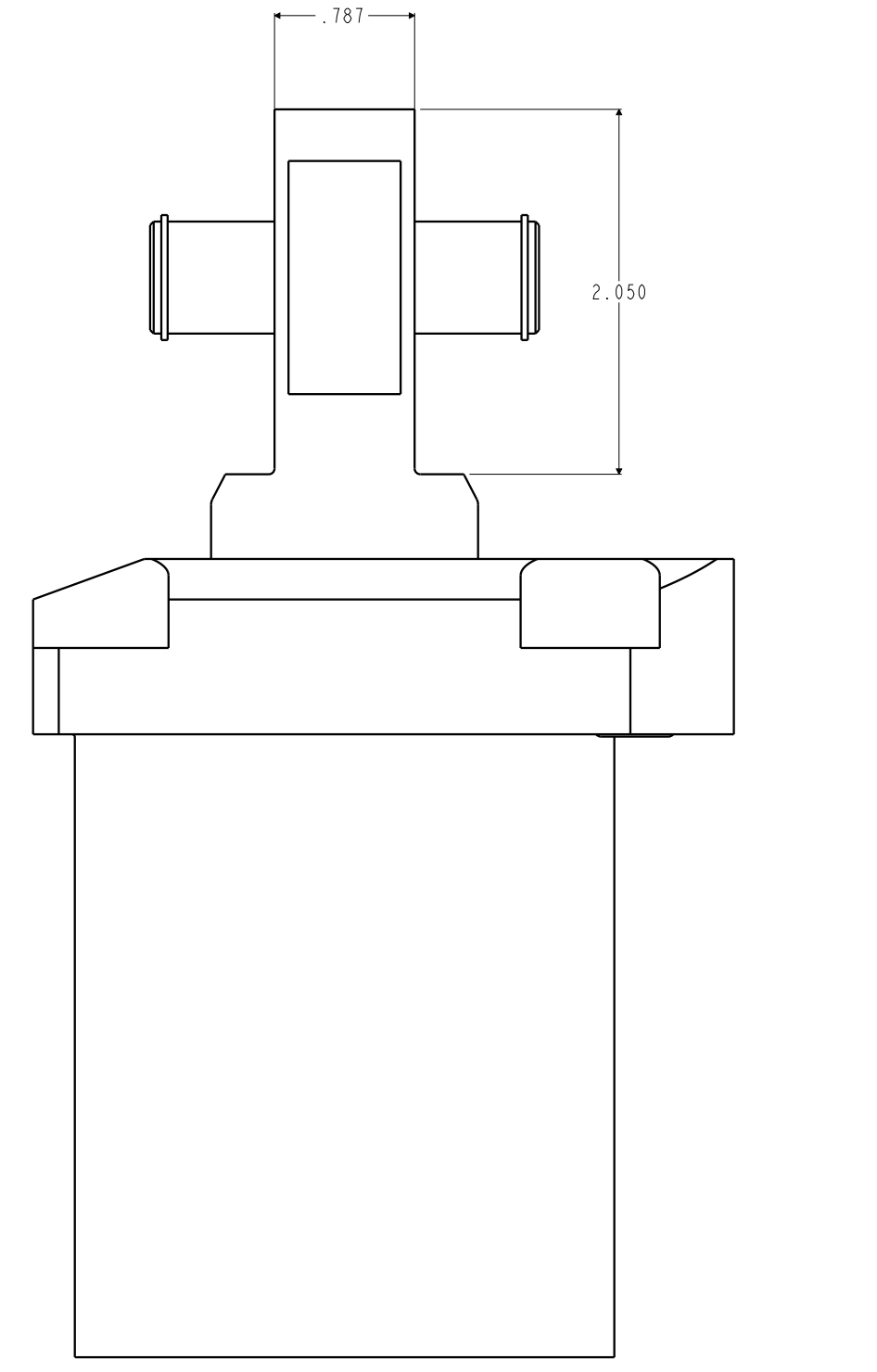


1LC14062121 REV A ECN 5920



CAD CONTROL DRAWING				 VEKTEK, INC. 1334 E. SIXTH AVE. P.O. BOX 625 EMPORIA, KS. 66801 U.S.A.		
A	5920	RELEASE	JDW	03/04/26	14062121 A	
REV	IN ACCORDANCE WITH ECN	EFFECTIVE DATE	REVISED BY	DATE	REFERENCE MODEL REF REV	
DRW BY: JDW		DRAWING STATUS: Released			TOLERANCES DO NOT APPLY	SIZE D
DATE: 03/04/26		PRODUCTION APPROVED FOR RELEASED STATUS ONLY			DIMENSIONS ARE NOMINAL	1LC14062121 REV A
					FORM FEG036, Rev. B	