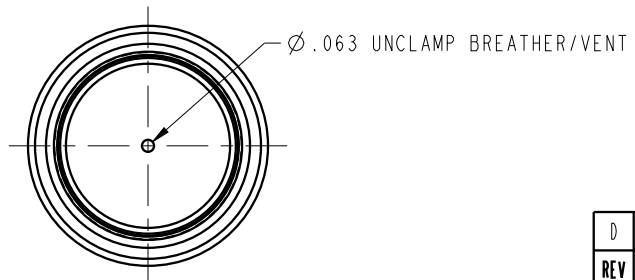

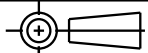


ILCI4110501L REV D ECN 2510



<b>CAD CONTROL DRAWING</b>		 VEKTEK, INC. 1334 E. SIXTH AVE. P.O. BOX 625 EMPORIA, KS. 66801 U.S.A.	
			

D	2510	RELEASED	JDW	04/08/13
REV	IN ACCORDANCE WITH ECN	EFFECTIVE DATE	REVISED BY	DATE
DRW BY:	K. ROEMER	DRAWING STATUS: <b>Released</b>		
DATE:	03/28/08	PRODUCTION APPROVED FOR RELEASED STATUS ONLY		

14110501L	A	SC, HS, CM, SA, 450, LH
REFERENCE MODEL	REF REV	
TOLERANCES DO NOT APPLY DIMENSIONS ARE NOMINAL		SIZE B
ILCI4110501L		REV D

FORM FEG036, Rev. B

SHEET 1 OF 1