

1

2

3

4

D

D

C

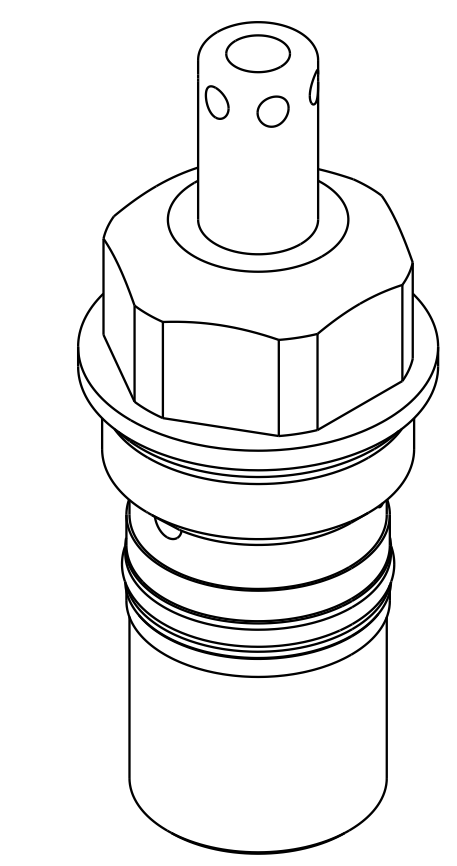
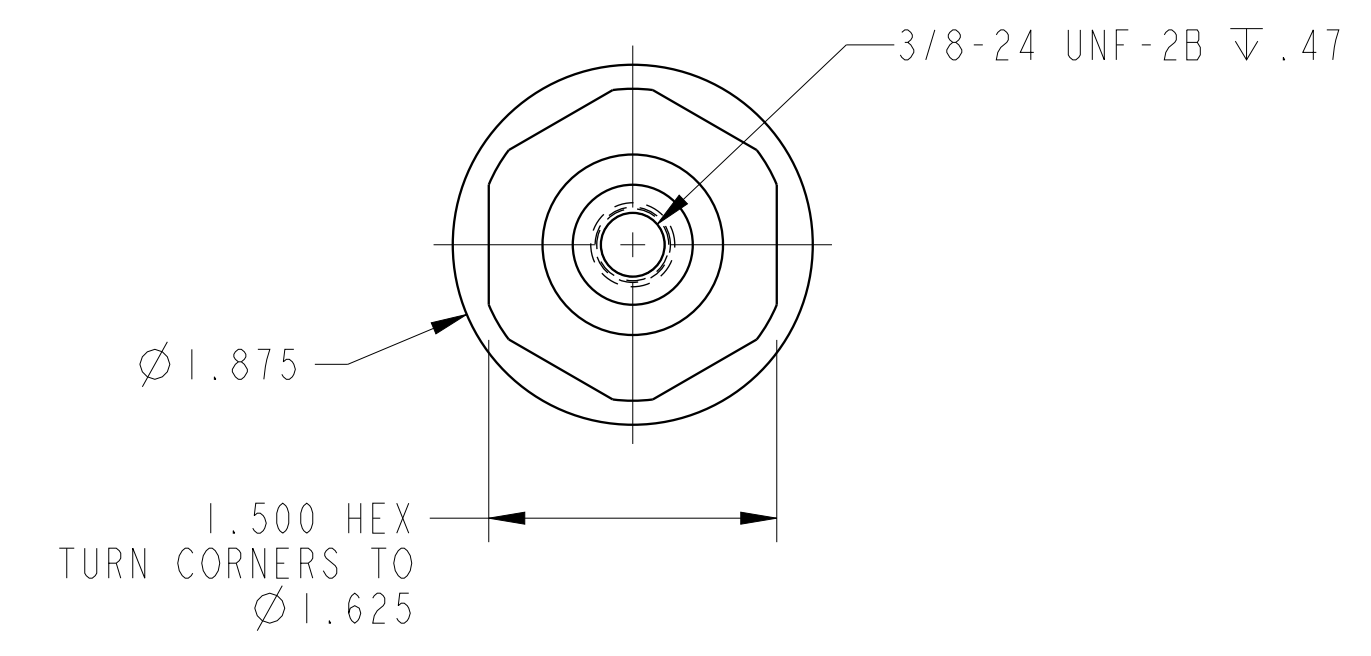
C

B

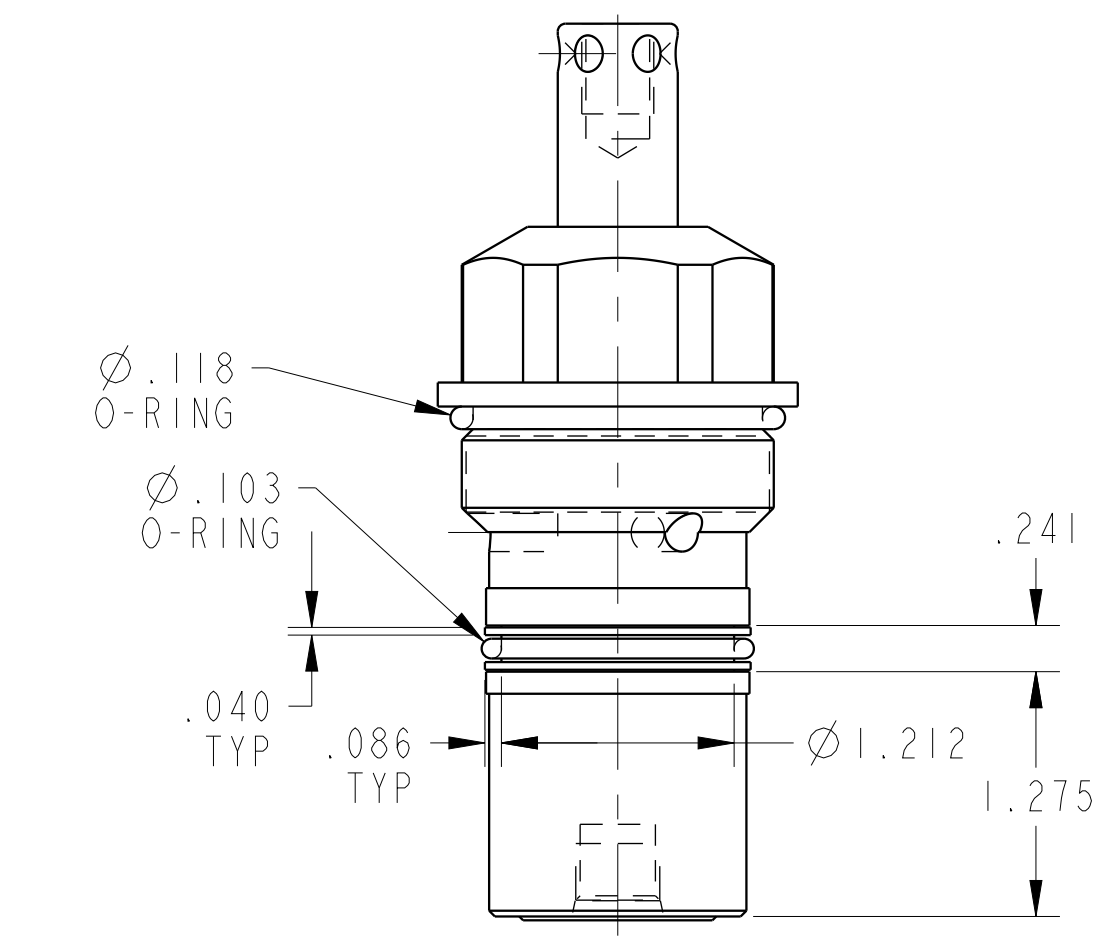
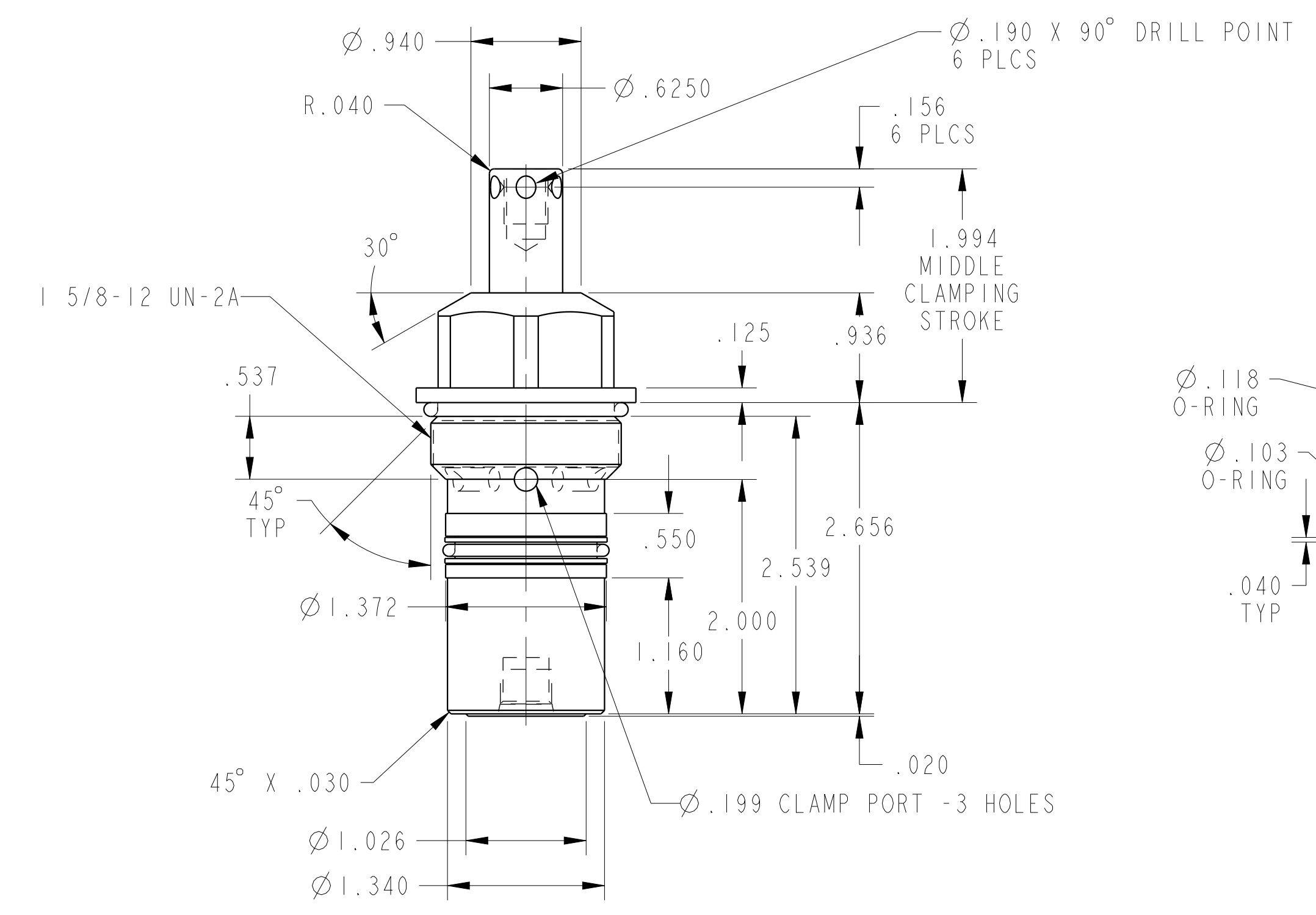
B

A

A



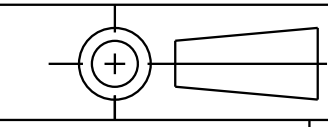
ILC14120901R REV E ECN 2510



CAD CONTROL
DRAWING



VEKTEK, INC.
1334 E. SIXTH AVE. P.O. BOX 625
EMPORIA, KS. 66801 U.S.A.



E	2510	RELEASED	JDW	04/08/13	14120901R	A	SC, HS, CM, DA, 1100, RH
REV	IN ACCORDANCE WITH ECN	EFFECTIVE DATE	REVISED BY	DATE	REFERENCE MODEL	REF REV	
DRW BY:	K. ROEMER	DRAWING STATUS: Released			TOLERANCES DO NOT APPLY DIMENSIONS ARE NOMINAL		SIZE D
DATE:	03/28/08	PRODUCTION APPROVED FOR RELEASED STATUS ONLY			ILC14120901R		REV E