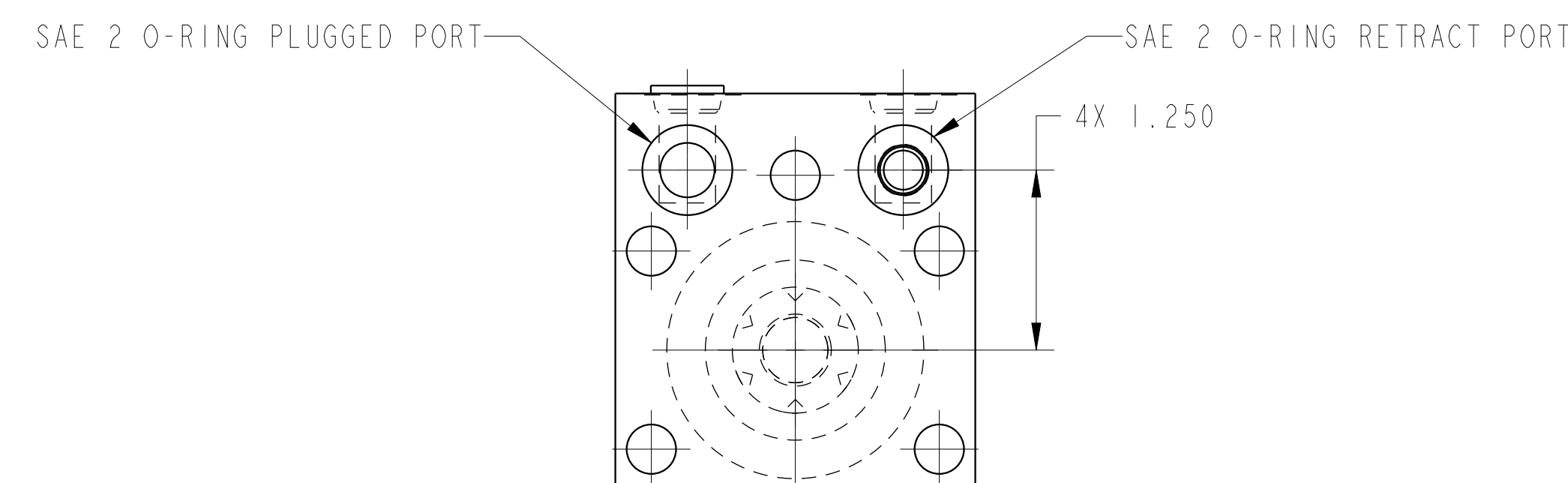
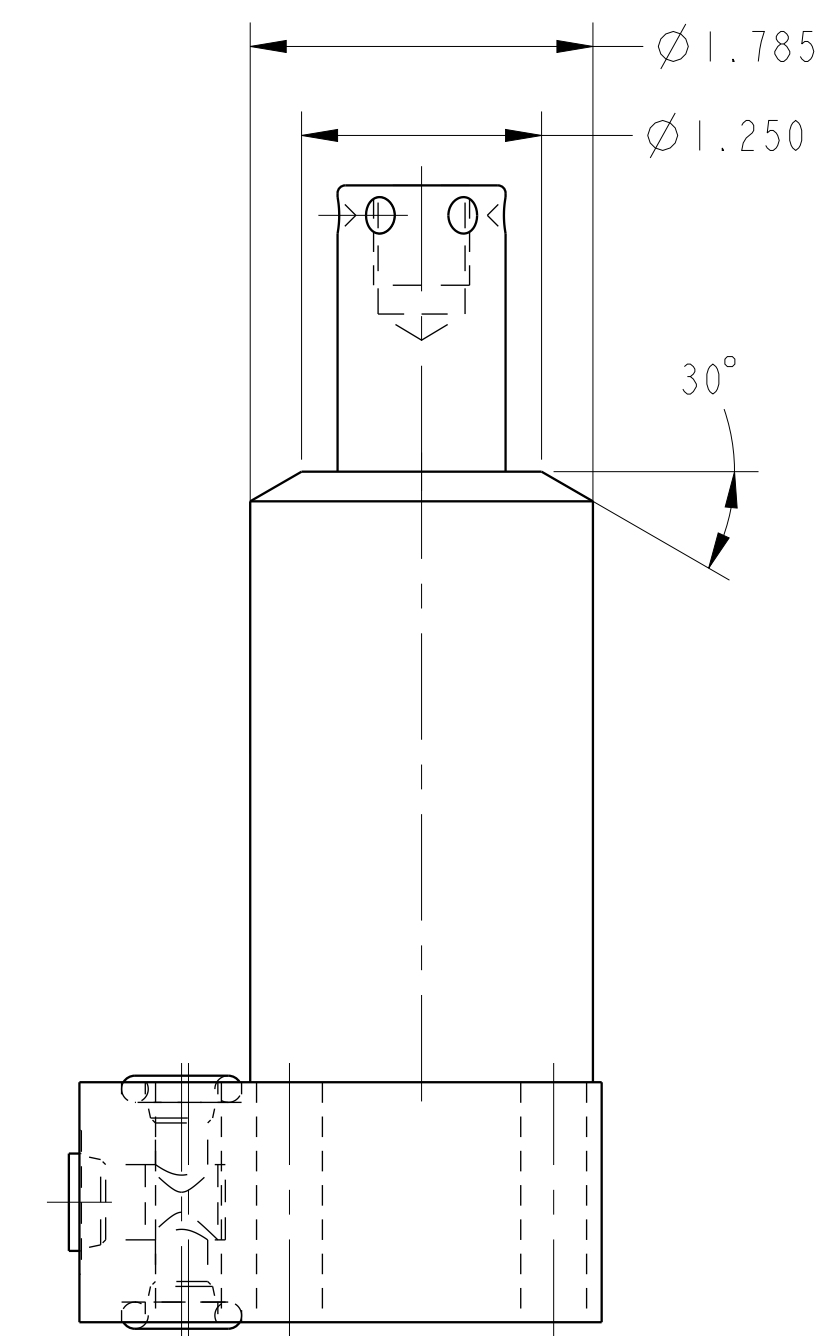
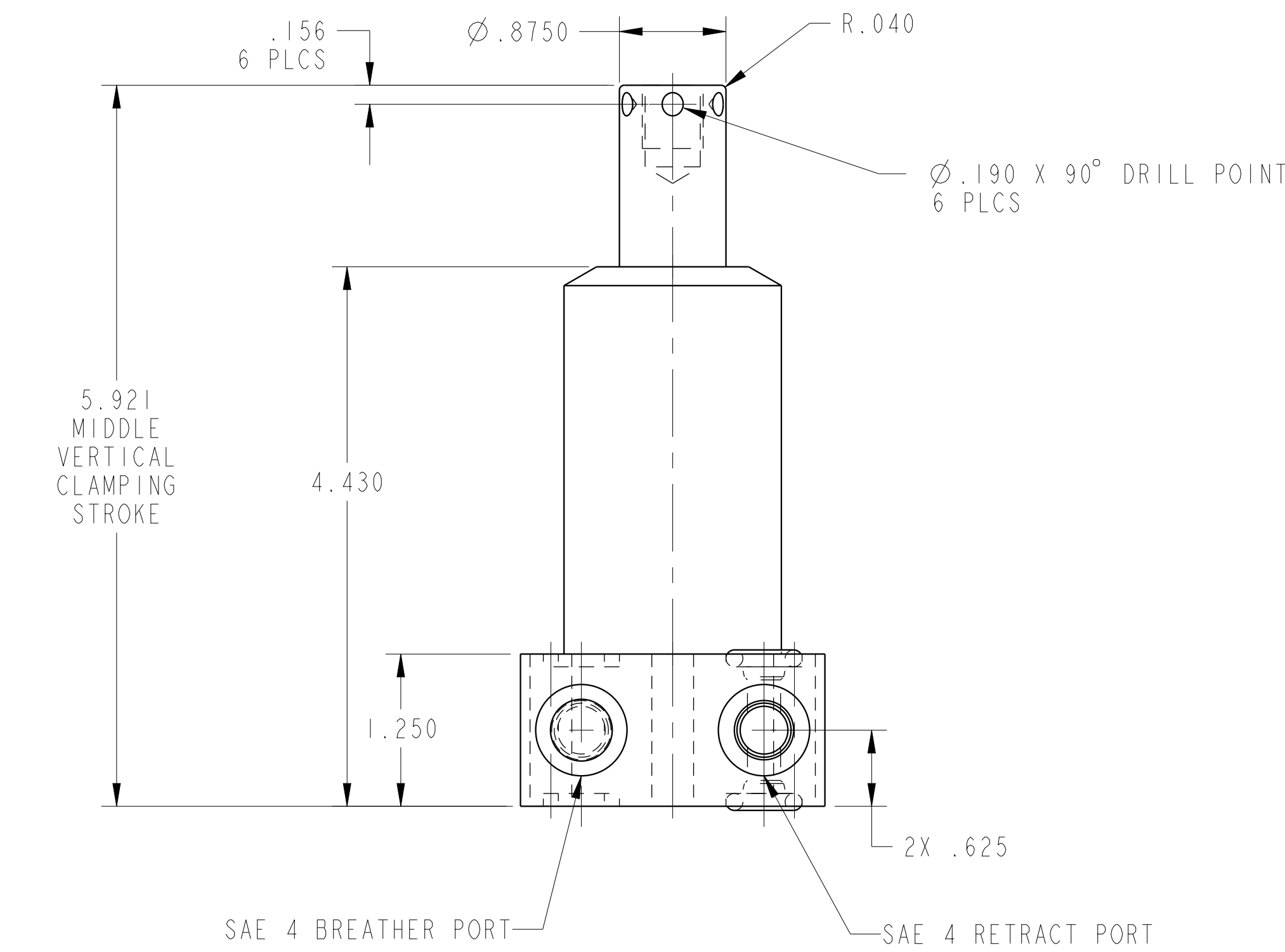
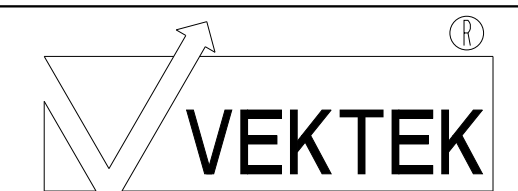


ILC14211301L REV E ECN 3505
SCALE 1.000

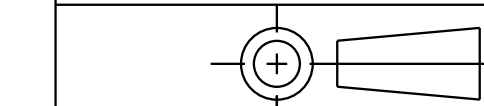


CAD CONTROL
DRAWING



VEKTEK, INC.
1334 E. SIXTH AVE. P.O. BOX 625
EMPORIA, KS. 66801 U.S.A.

E	3505	RELEASE	ATHOMSEN	15-JUN-2018
REV	IN ACCORDANCE WITH ECN	EFFECTIVE DATE	REVISED BY	DATE
DRW BY:	DRAWING STATUS: Released			
DATE:	PRODUCTION APPROVED FOR RELEASED STATUS ONLY			



TOLERANCES DO NOT APPLY
DIMENSIONS ARE NOMINAL

SIZE D ILC14211301L REV E