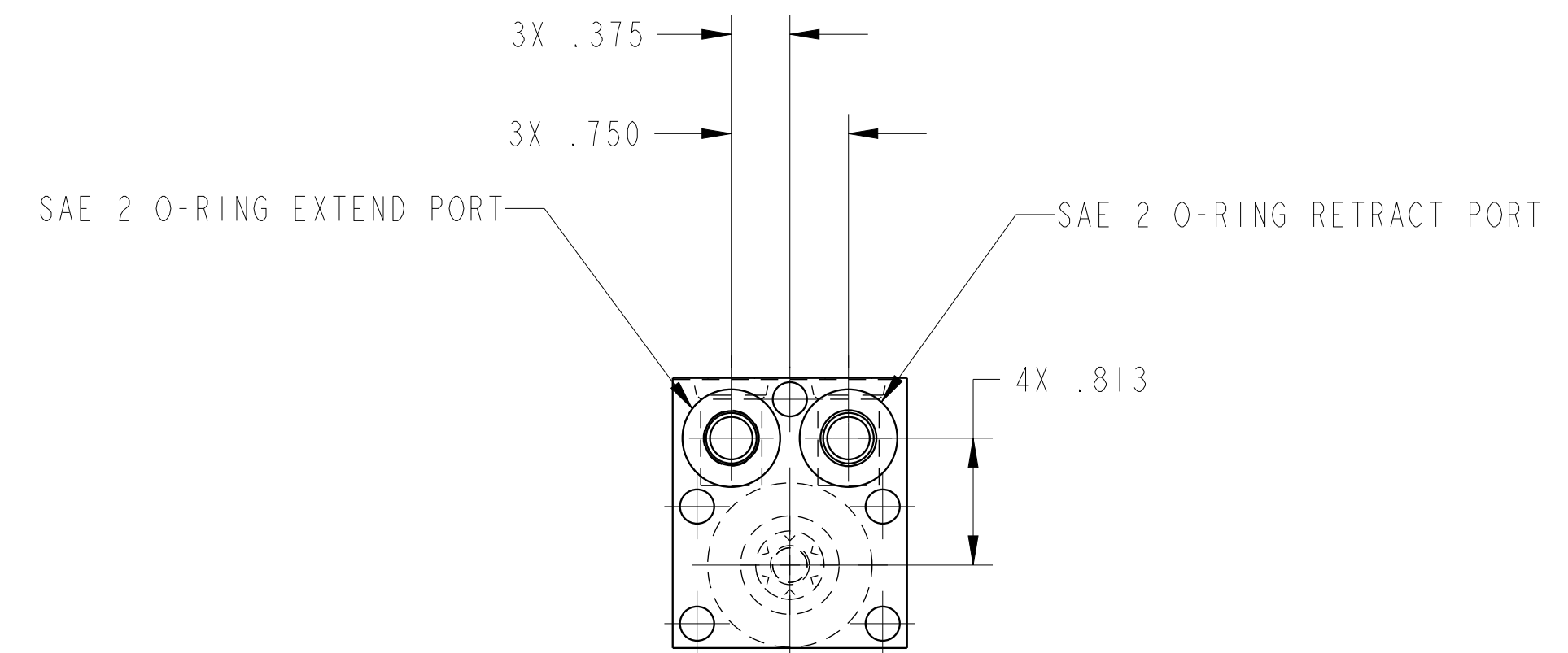
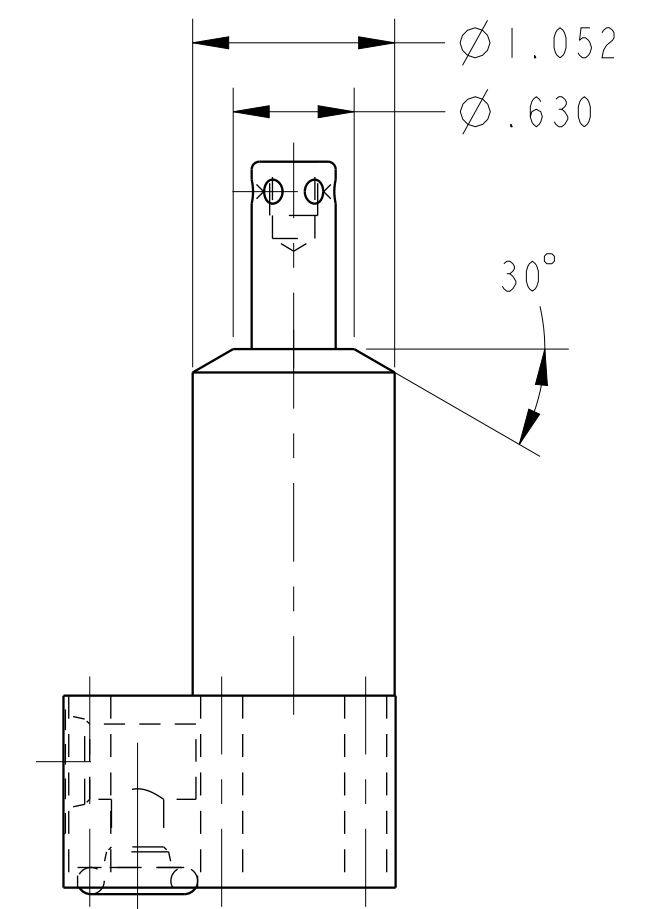
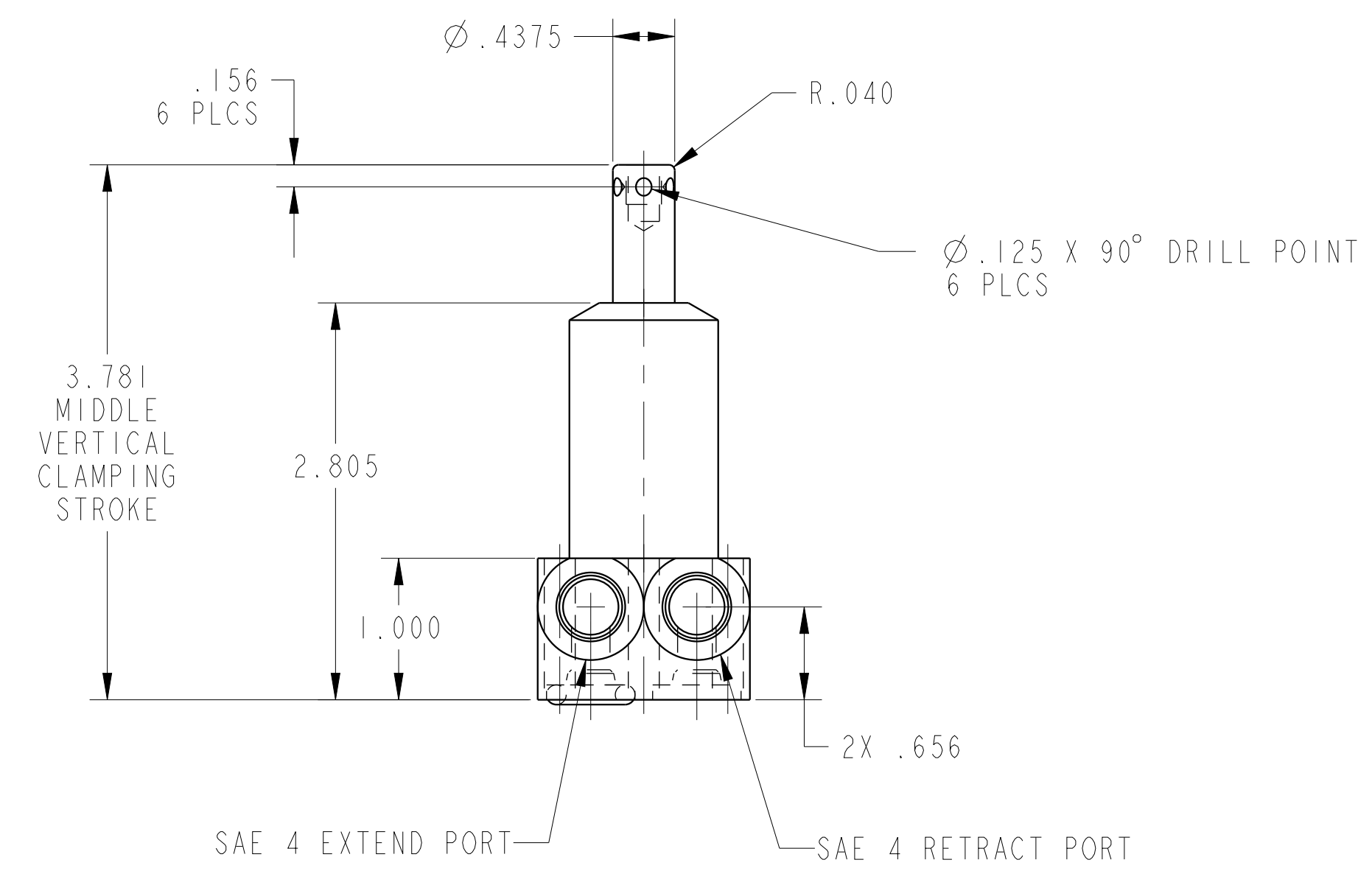


ILCI4220501S REV B ECN 3489  
SCALE 1.000



<b>CAD CONTROL DRAWING</b>			
		VEKTEK, INC. 1334 E. SIXTH AVE. P.O. BOX 625 EMPORIA, KS. 66801 U.S.A.	

B	3489	RELEASE	ATHOMSEN	11-JUN-2018	I4220501S	A	SC, BF, DA, HS, STR, 450
REV	IN ACCORDANCE WITH ECN	EFFECTIVE DATE	REVISED BY	DATE	REFERENCE MODEL	REF REV	
DRW BY:	JDW	<b>DRAWING STATUS: Released</b>			TOLERANCES DO NOT APPLY DIMENSIONS ARE NOMINAL		SIZE D
DATE:	01/30/18	PRODUCTION APPROVED FOR RELEASED STATUS ONLY			I L C I 4 2 2 0 5 0 1 S		REV B