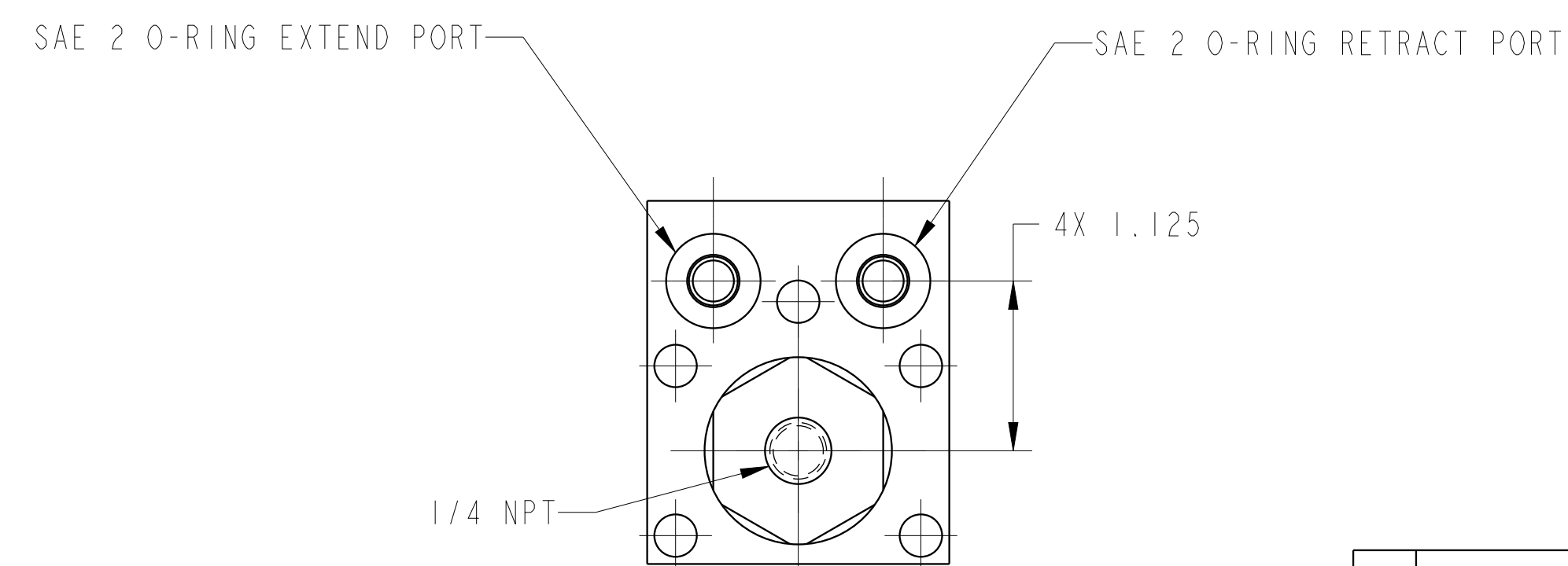
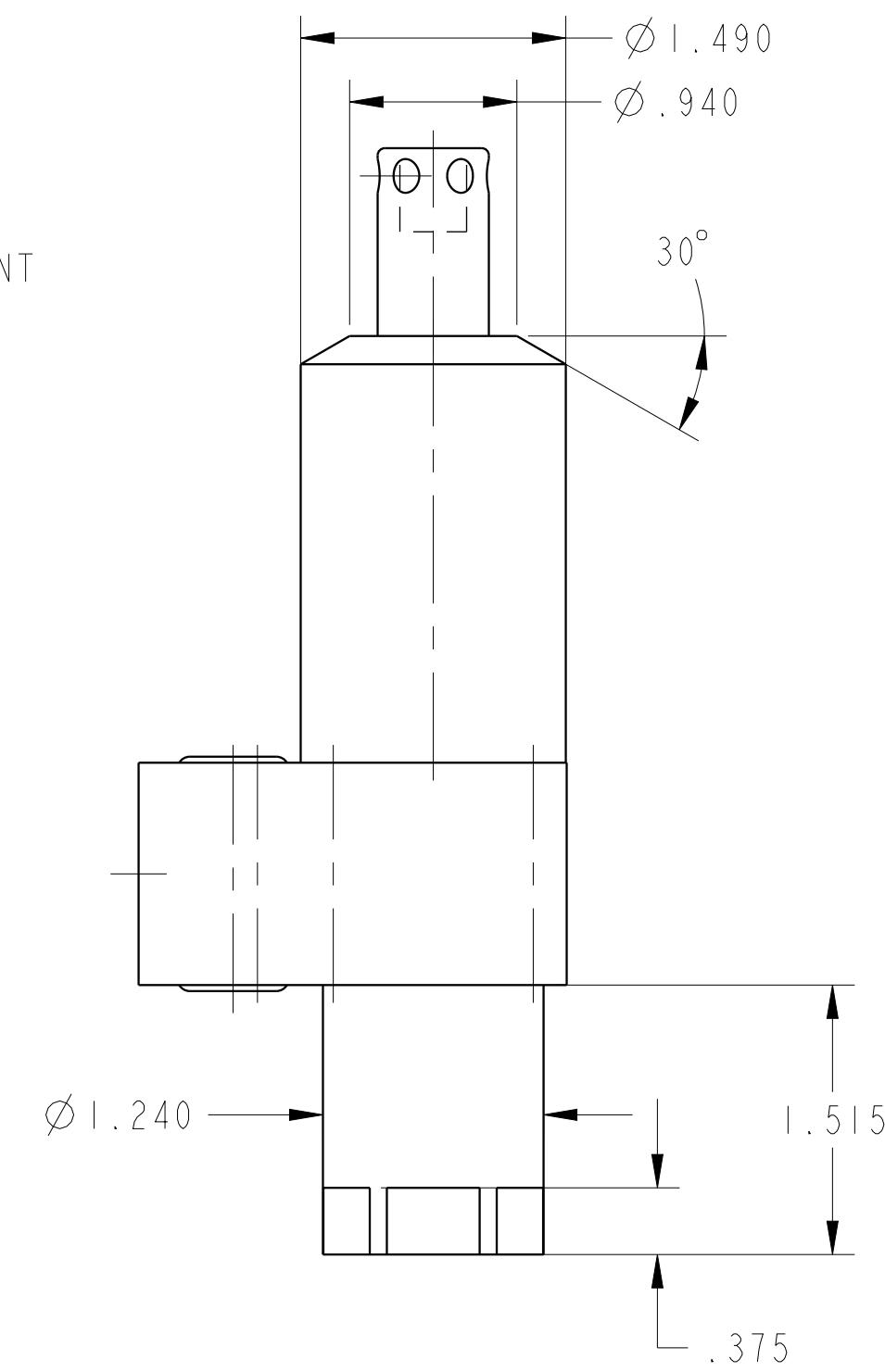
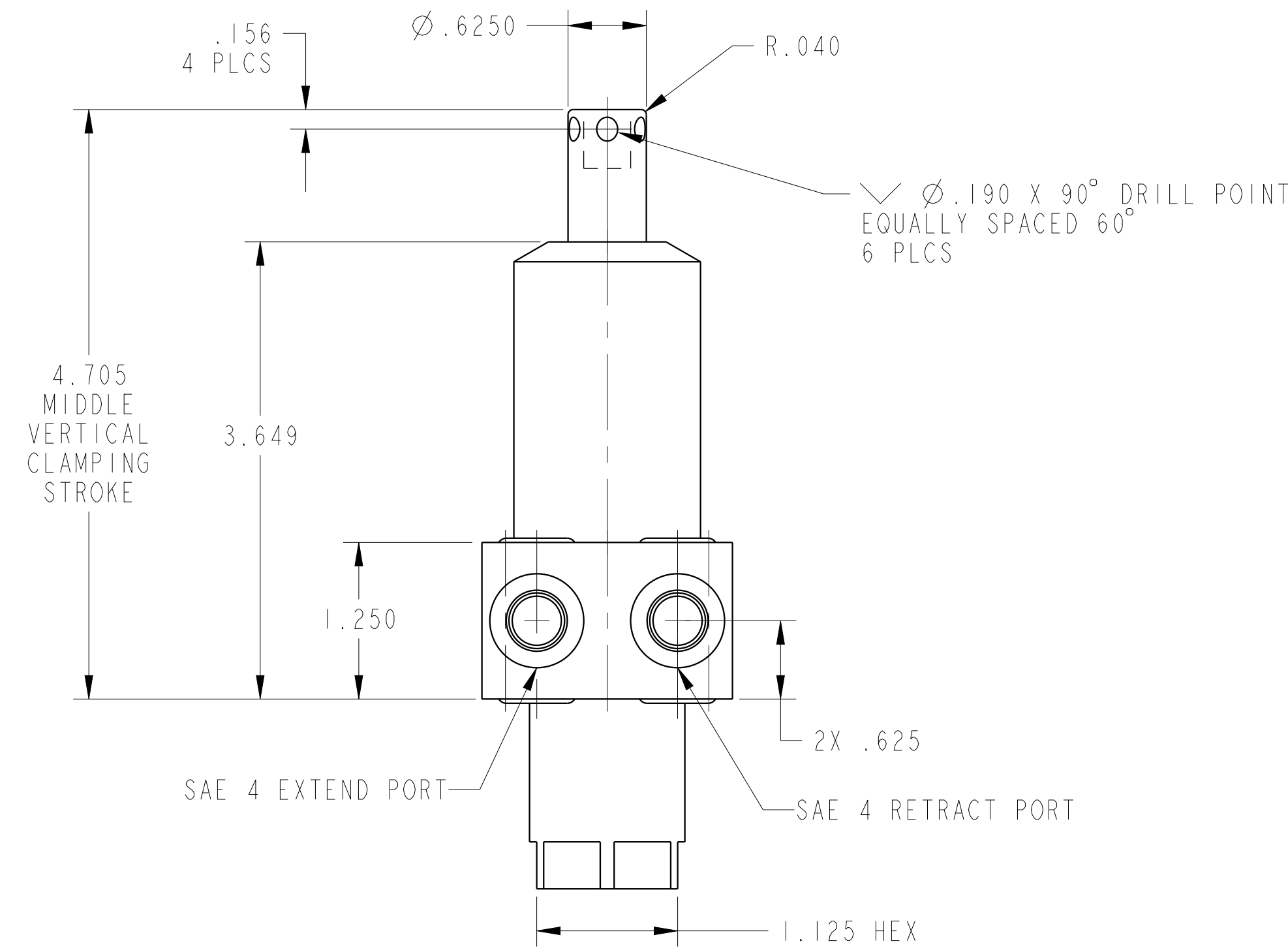
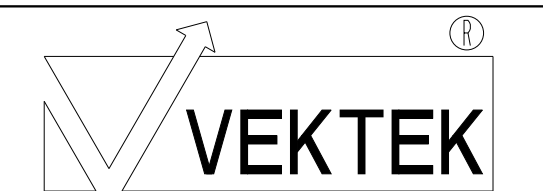


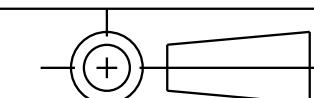
ILC14220901RPP REV A ECN 5806



CAD CONTROL DRAWING



VEKTEK, INC.  
1334 E. SIXTH AVE. P.O. BOX 625  
EMPORIA, KS. 66801 U.S.A.



A	5806	RELEASE	ALS	9/11/25	I4220901RPP	A	SC, BF, DA, HS, RH, 1100, PP
REV	IN ACCORDANCE WITH ECN	EFFECTIVE DATE	REVISED BY	DATE	REFERENCE MODEL	REF REV	
DRW BY:	ALS	DRAWING STATUS: Released			TOLERANCES DO NOT APPLY DIMENSIONS ARE NOMINAL		SIZE D
DATE:	9/11/25	PRODUCTION APPROVED FOR RELEASED STATUS ONLY			I4220901RPP		REV A