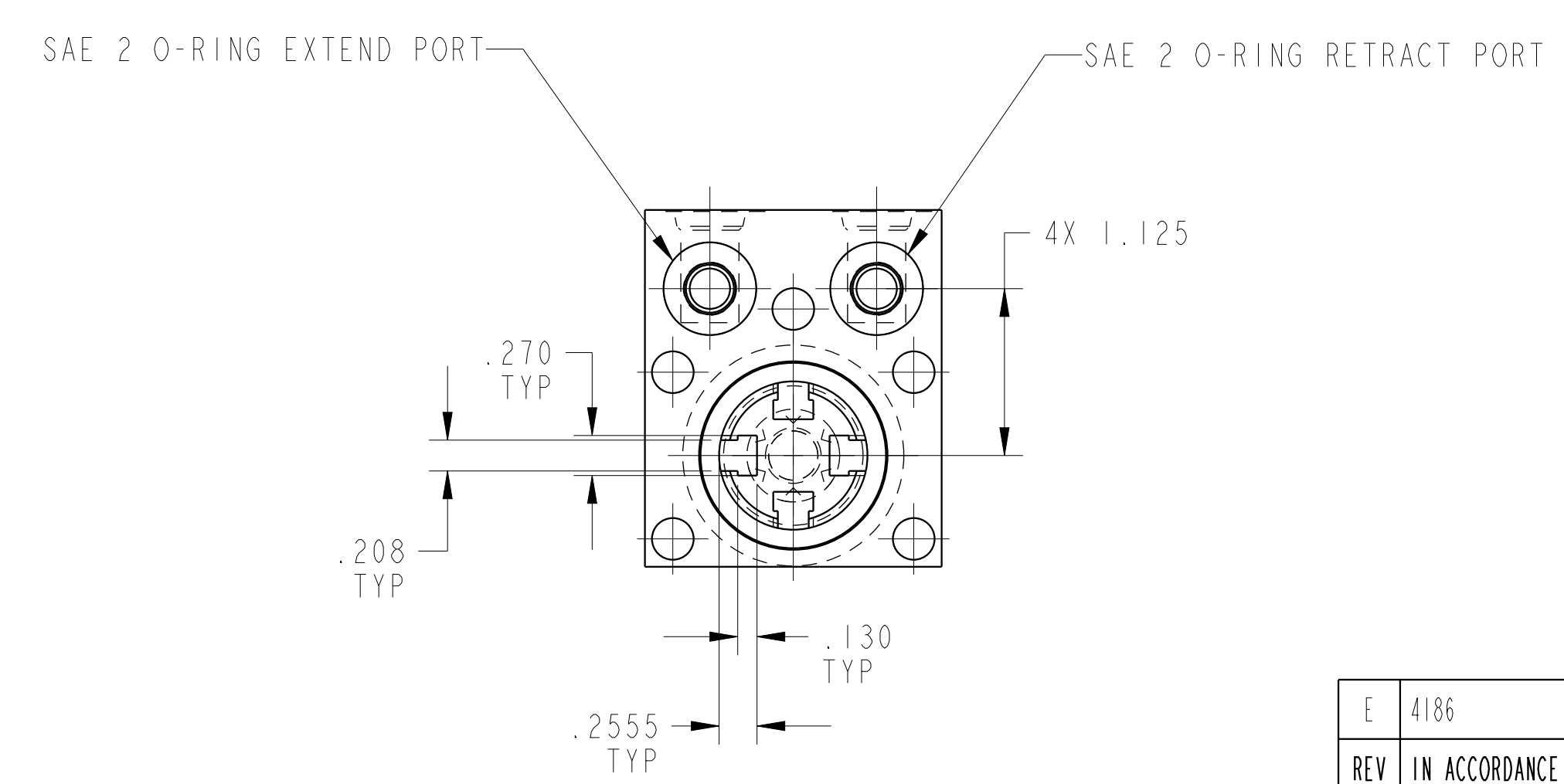
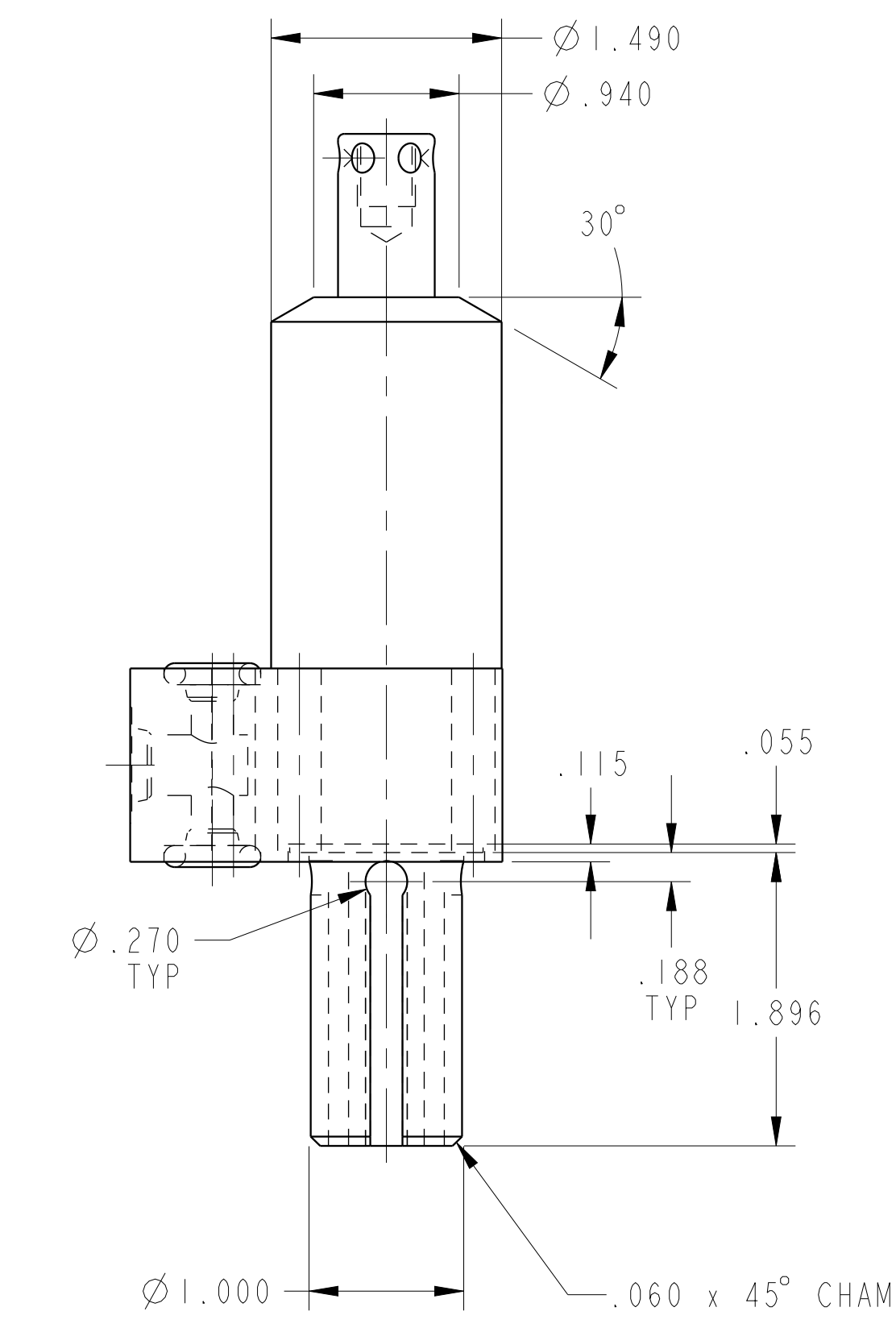
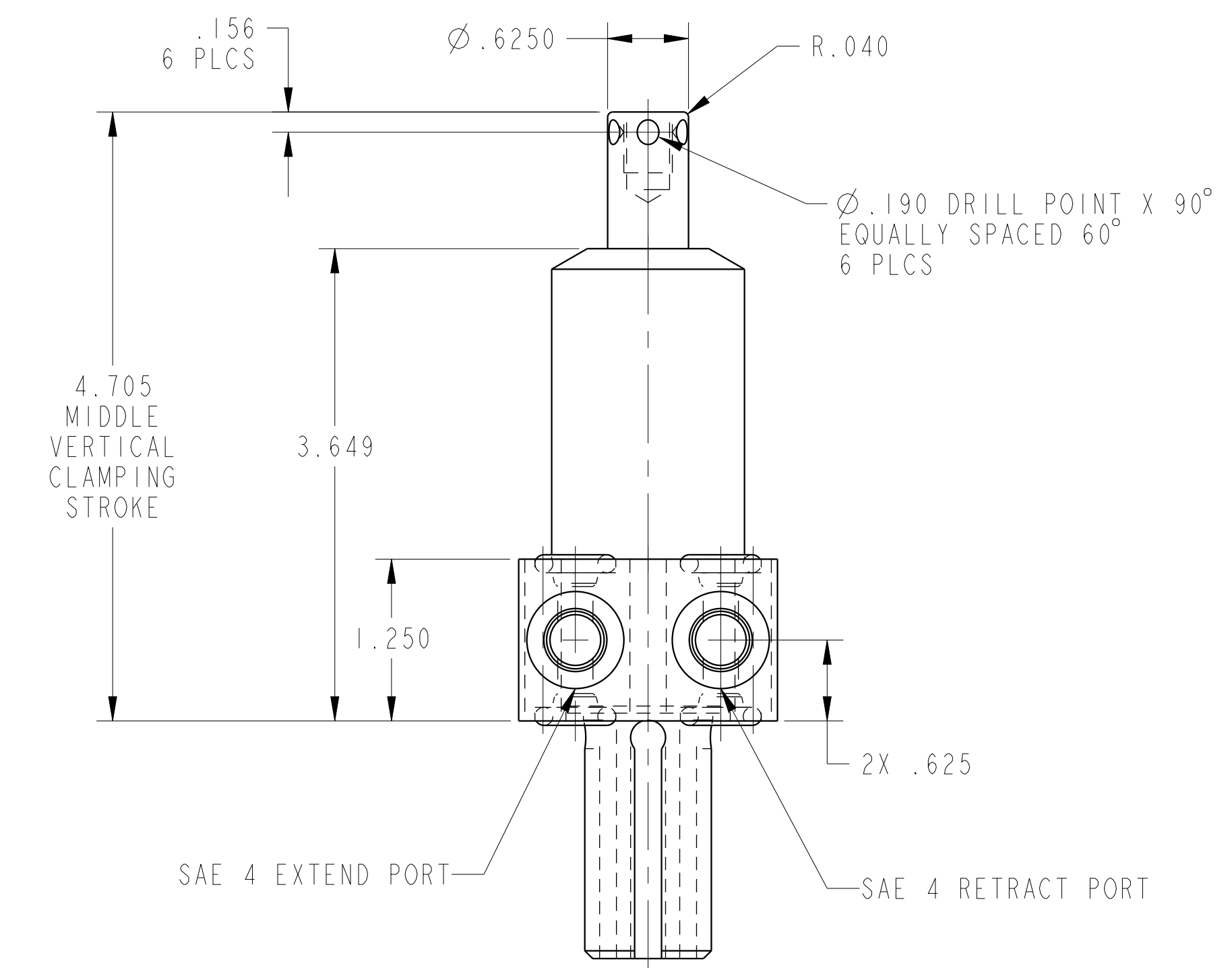


ILC14220901RPS REV E ECN 4186



CAD CONTROL DRAWING		 VEKTEK, INC. 1334 E. SIXTH AVE. P.O. BOX 625 EMPORIA, KS. 66801 U.S.A.	
E 4186	RELEASE	JDW	07/04/20
REV IN ACCORDANCE WITH ECN	EFFECTIVE DATE	REVISED BY	DATE
DRW BY: K. ROEMER	DRAWING STATUS: Released		
DATE: 07-25-05	PRODUCTION APPROVED FOR RELEASED STATUS ONLY		
	14220901RPS	E	SC, BF, DA, HS, RH, PS, 1100
	REFERENCE MODEL	REF REV	
	TOLERANCES DO NOT APPLY DIMENSIONS ARE NOMINAL		SIZE D
	ILC14220901RPS		REV E
	FORM FEG036, Rev. B		