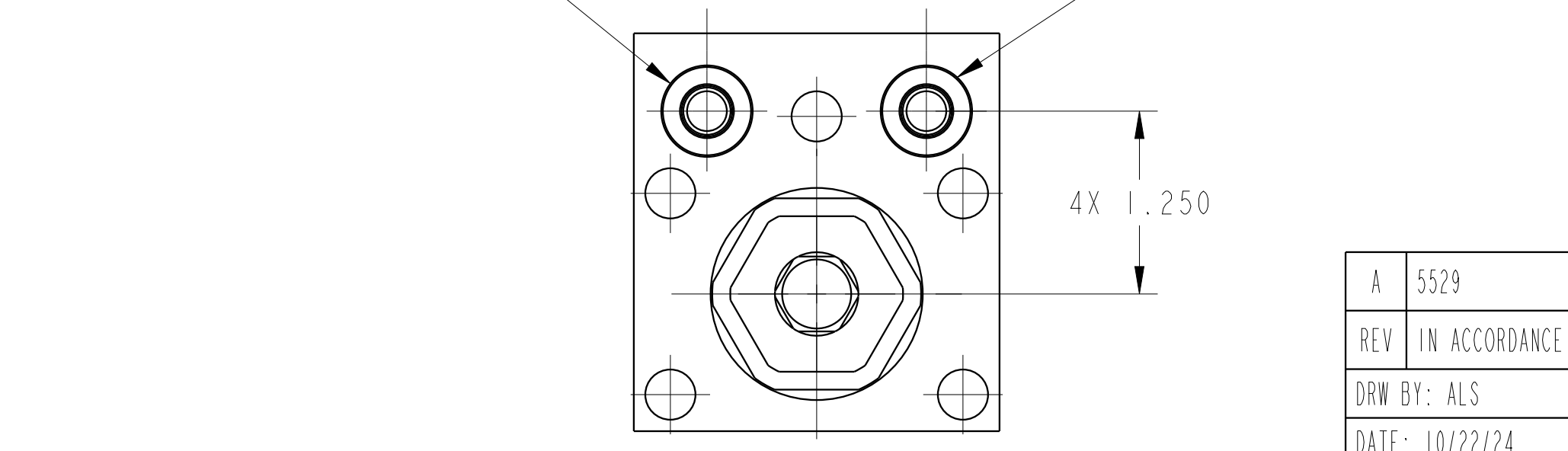


ILC14221301SUS REV A ECN 5529



CAD CONTROL DRAWING

VEKTEK, INC.
1334 E. SIXTH AVE. P.O. BOX 625
EMPORIA, KS. 66801 U.S.A.

A	5529	RELEASE	ALS	3/18/25	15221304SUS	A	SC, BF, DA, HS, STR, 2600, US
REV	IN ACCORDANCE WITH ECN	EFFECTIVE DATE	REVISED BY	DATE	REFERENCE MODEL	REF REV	
DRW BY:	ALS	DRAWING STATUS: Released			TOLERANCES DO NOT APPLY		
DATE:	10/22/24	PRODUCTION APPROVED FOR RELEASED STATUS ONLY			DIMENSIONS ARE NOMINAL		

SIZE	D	ILC14221301SUS	REV	A
FORM FEG036, Rev. B				