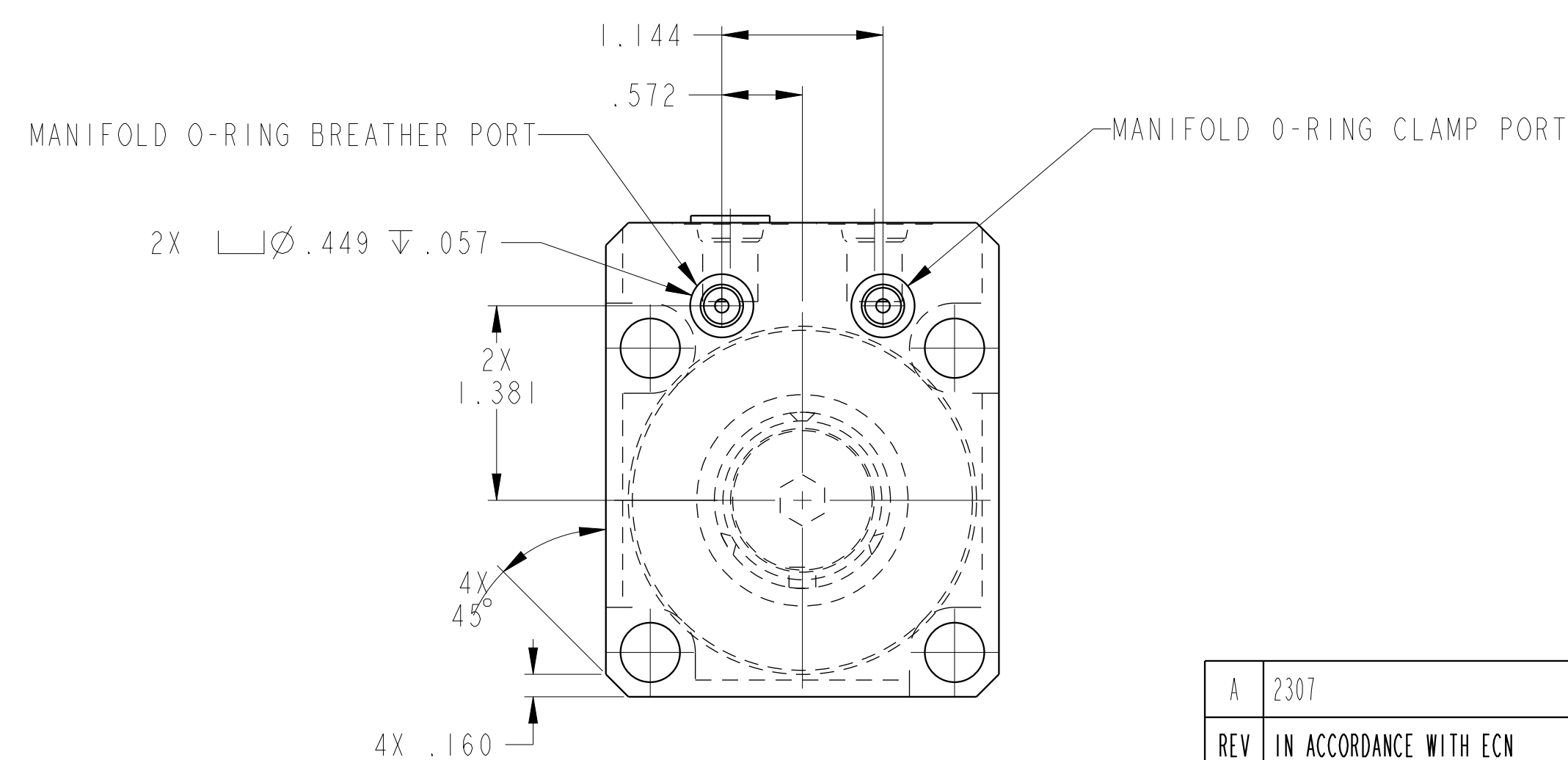
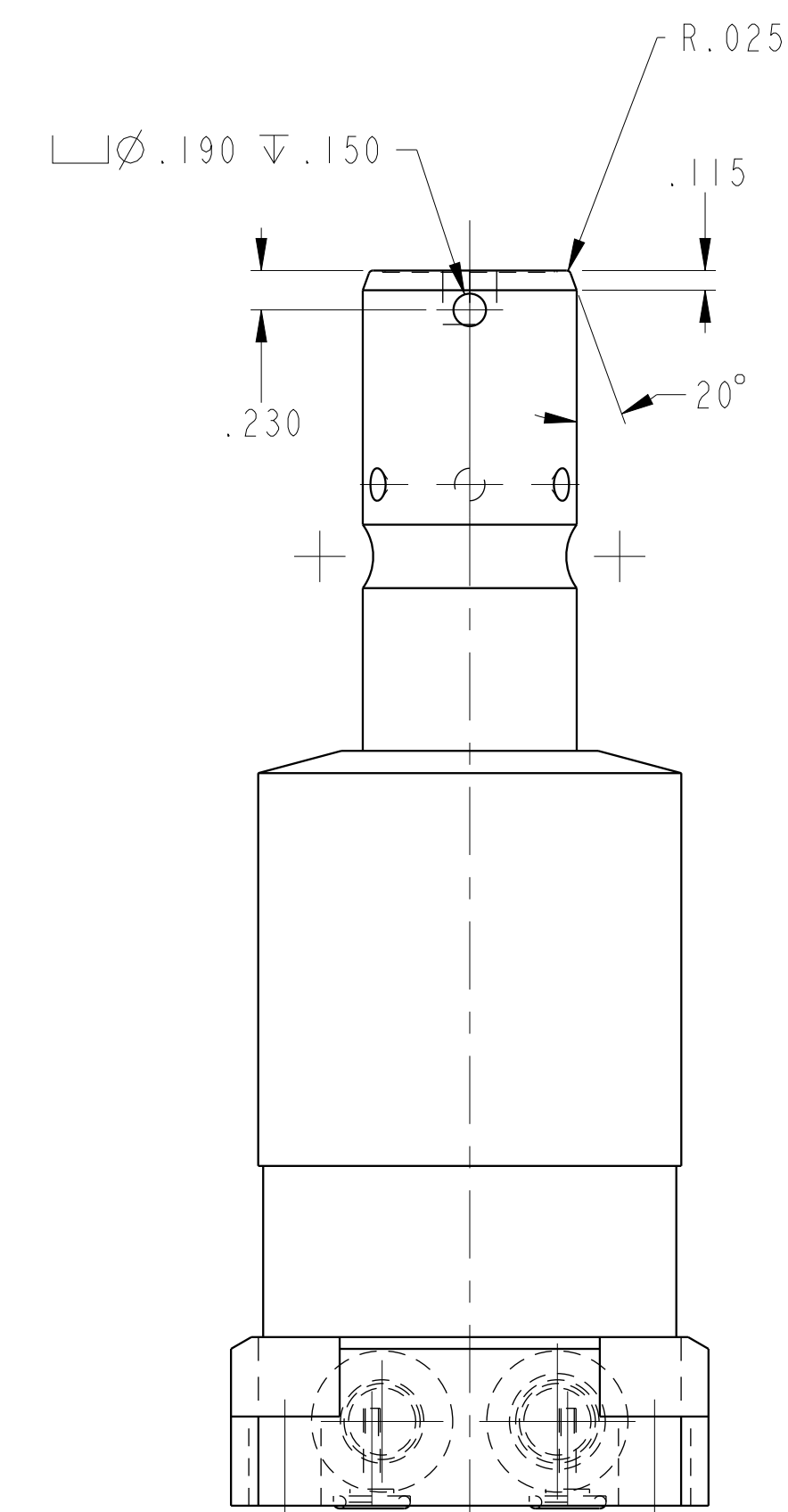
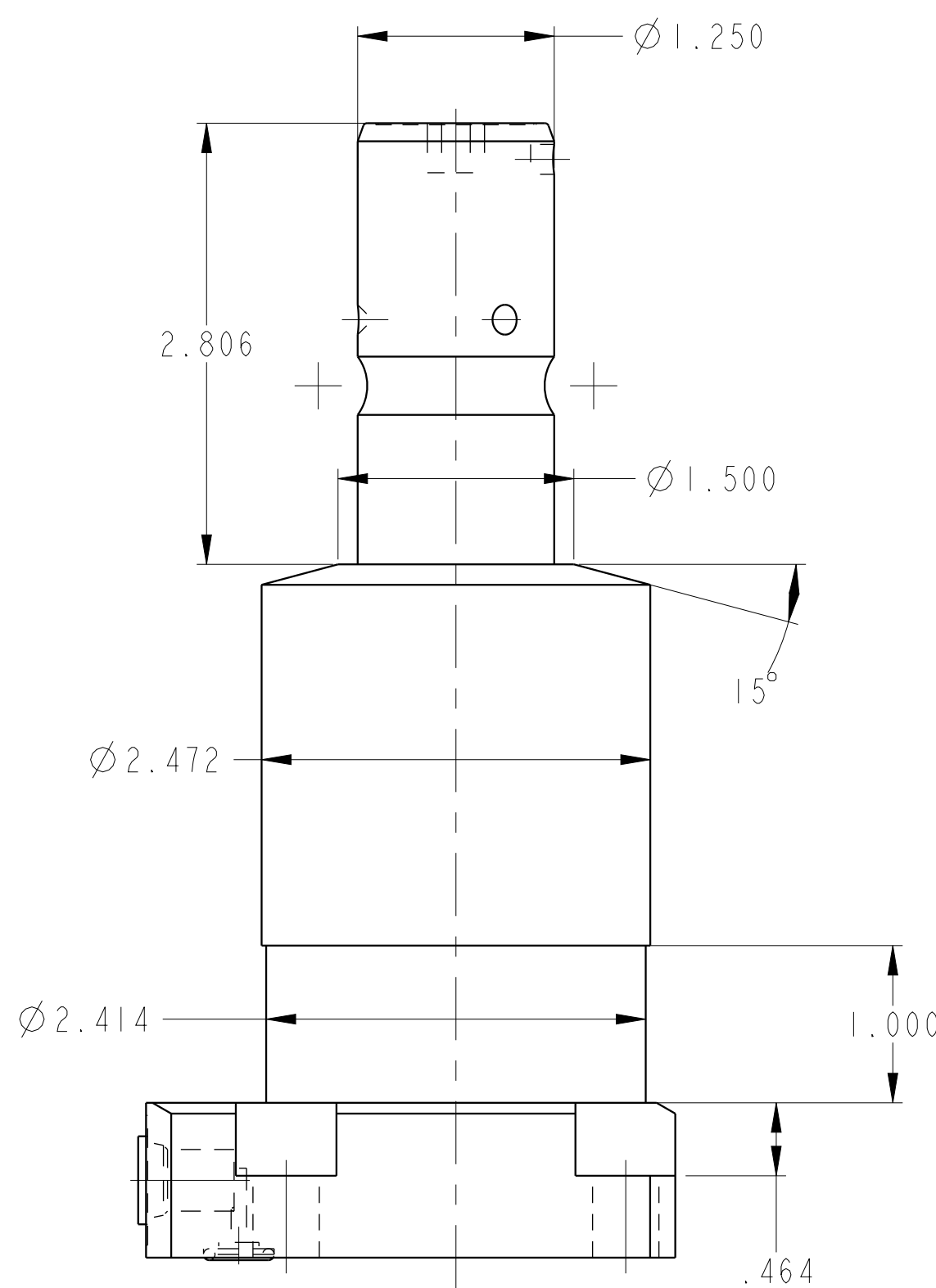
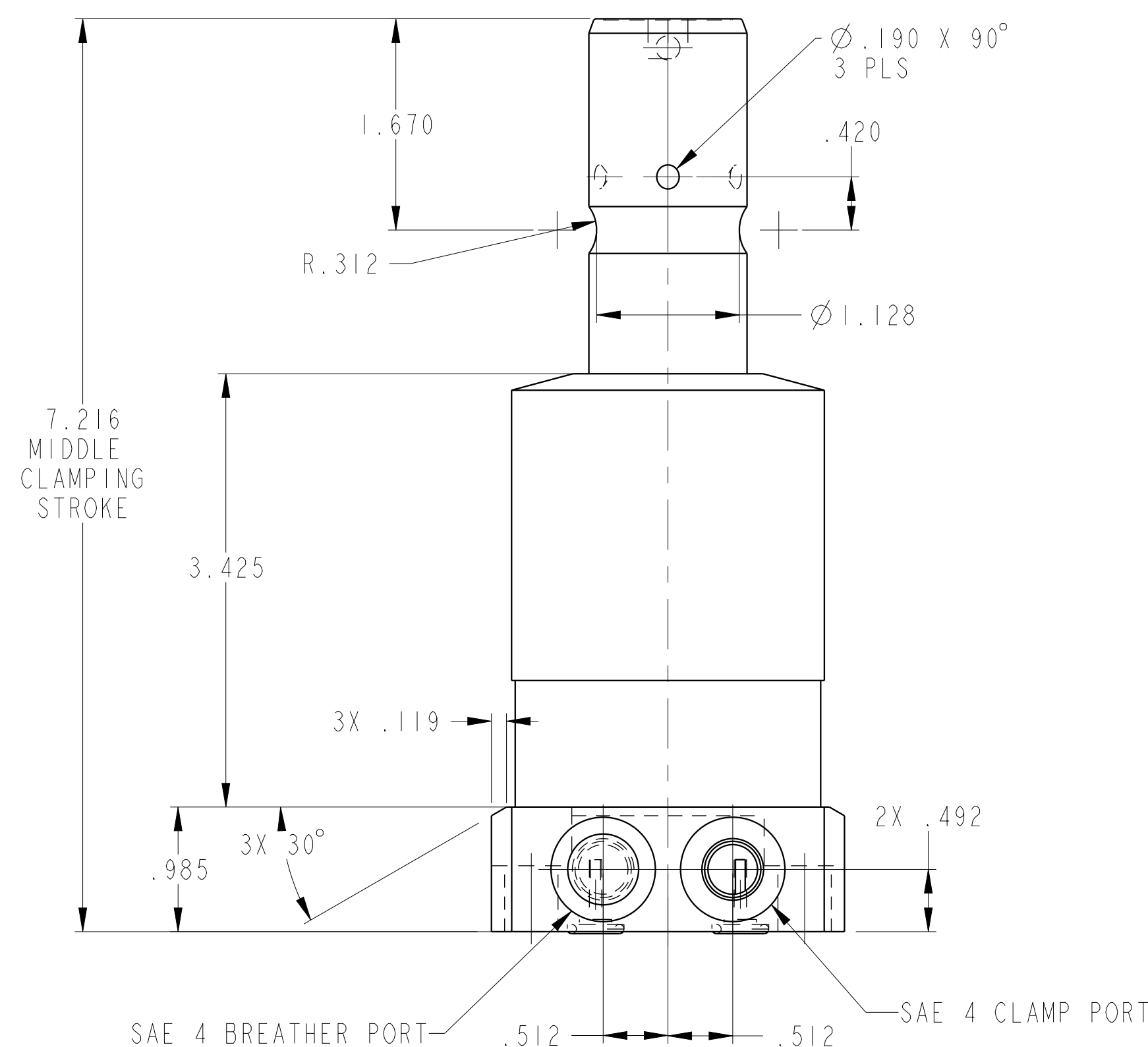
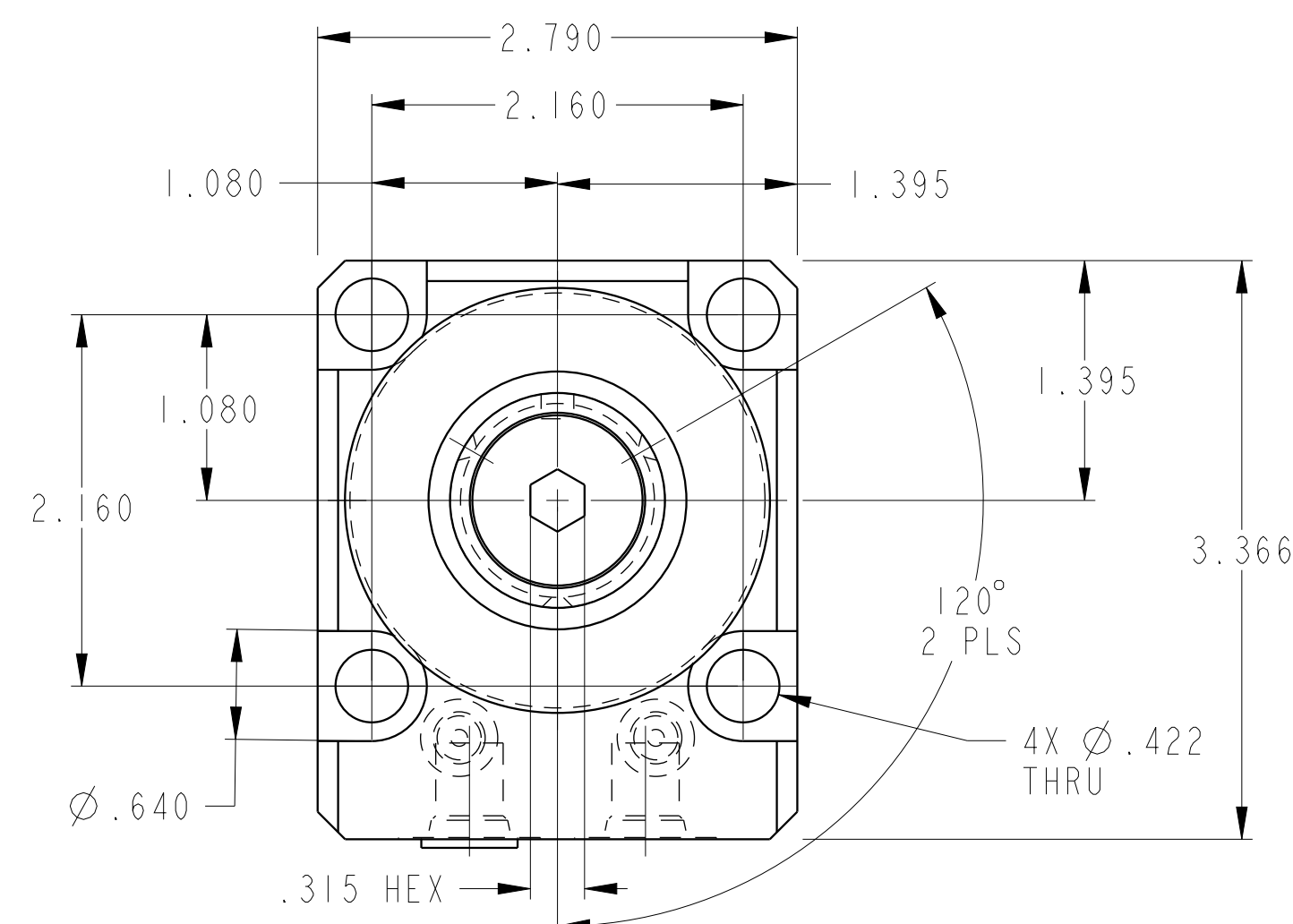
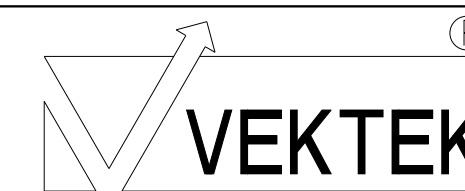


ILC14271801 REV A ECN 2307



CAD CONTROL DRAWING



VEKTEK, INC.
1334 E. SIXTH AVE. P.O. BOX 625
EMPORIA, KS. 66801 U.S.A.

A	2307	RELEASE	JDW	7-21-11
REV	IN ACCORDANCE WITH ECN	EFFECTIVE DATE	REVISED BY	DATE
DRW BY:	JDW	DRAWING STATUS: Released		
DATE:	7-21-11	PRODUCTION APPROVED FOR RELEASED STATUS ONLY		

14271801	A
REFERENCE MODEL	REF REV
TOLERANCES DO NOT APPLY DIMENSIONS ARE NOMINAL	

SIZE	D	REV	A
ILC14271801		FORM FEG036, Rev. B	