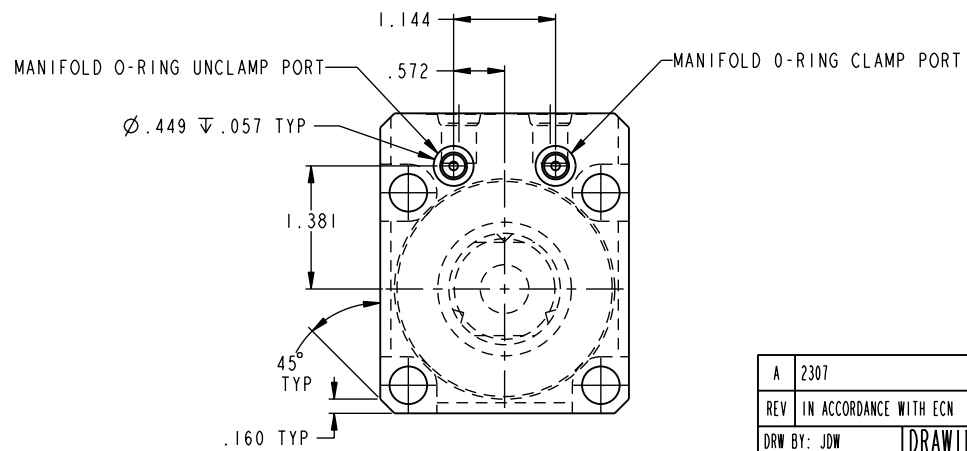
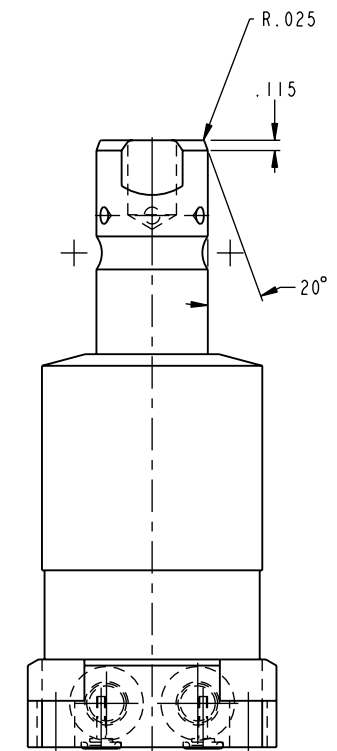
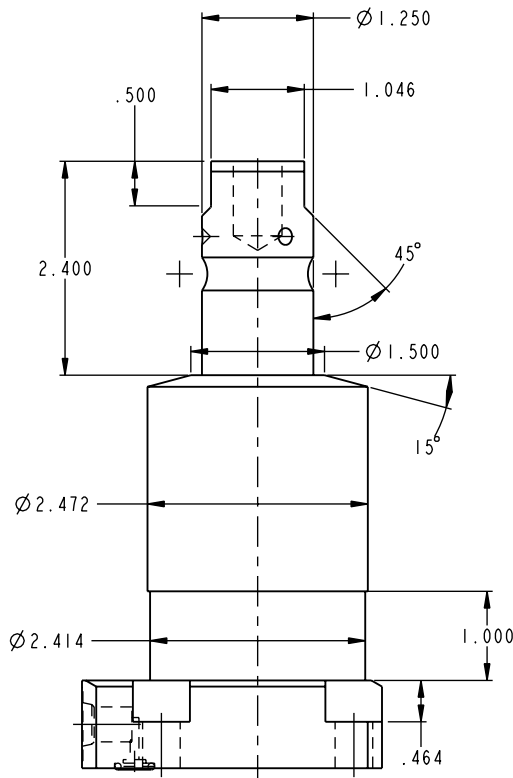
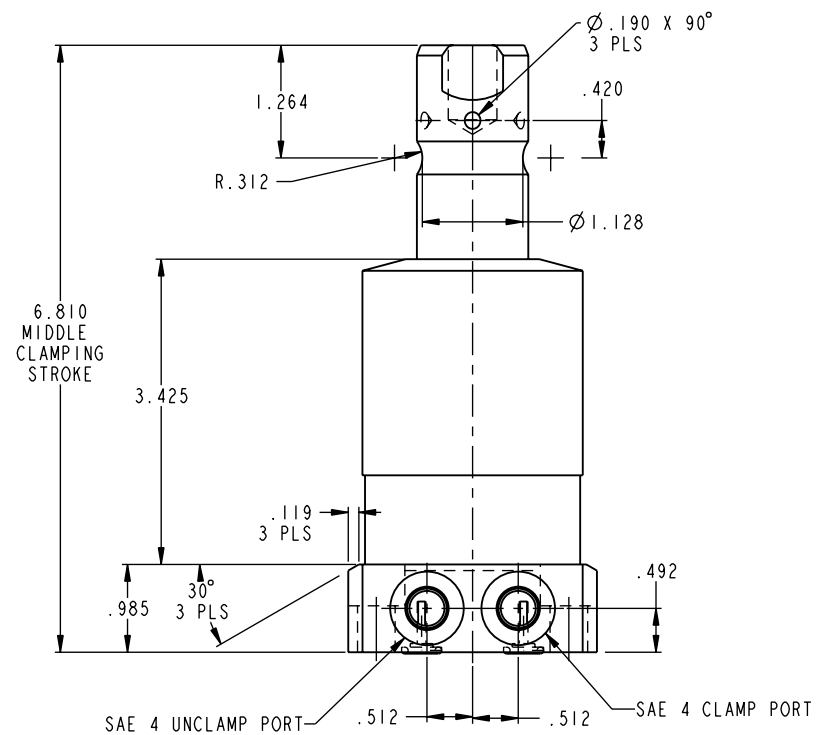
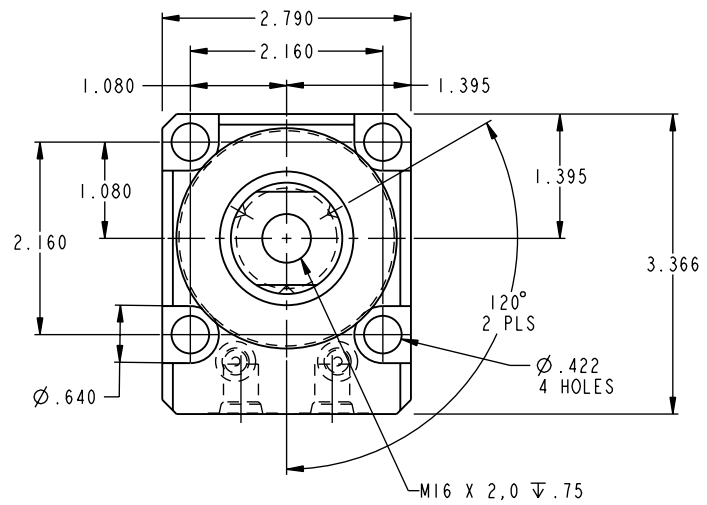


ILC14281800 REV A ECN 2307



CAD CONTROL DRAWING



VEKTEK, INC.
1334 E. SIXTH AVE. P.O. BOX 625
EMPORIA, KS. 66801 U.S.A.

A	2307	RELEASE	JDW	7-21-11	14281800	A	SC, LP, BF, TC, 5000, DA, RH
REV	IN ACCORDANCE WITH ECN	EFFECTIVE DATE	REVISED BY	DATE	REFERENCE MODEL	REF REV	
DRW BY:	JDW	DRAWING STATUS: Released			TOLERANCES DO NOT APPLY DIMENSIONS ARE NOMINAL		SIZE D
DATE:	7-21-11	PRODUCTION APPROVED FOR RELEASED STATUS ONLY			ILC14281800		REV A

FORM FEG036, Rev. A

SHEET 1 OF 1