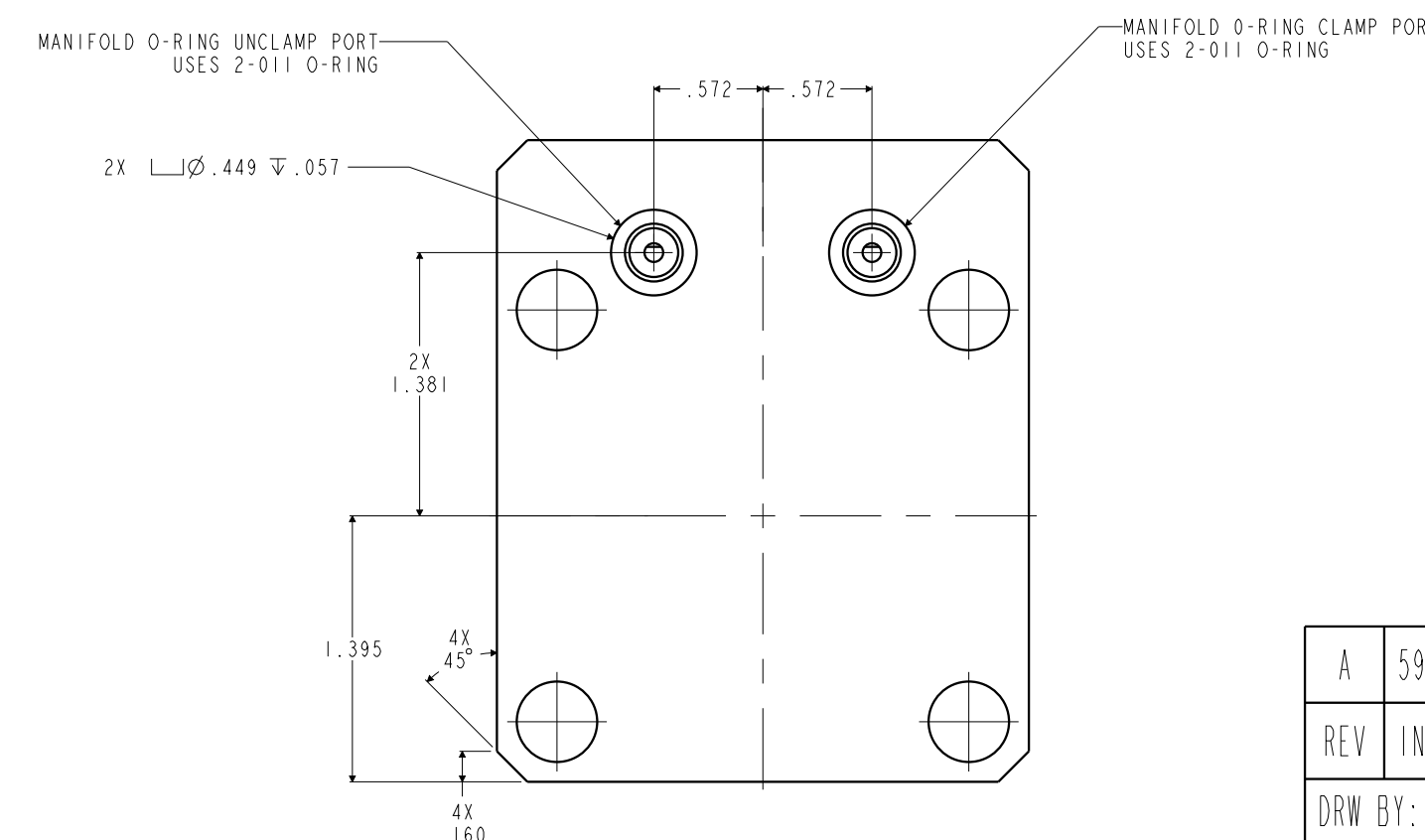
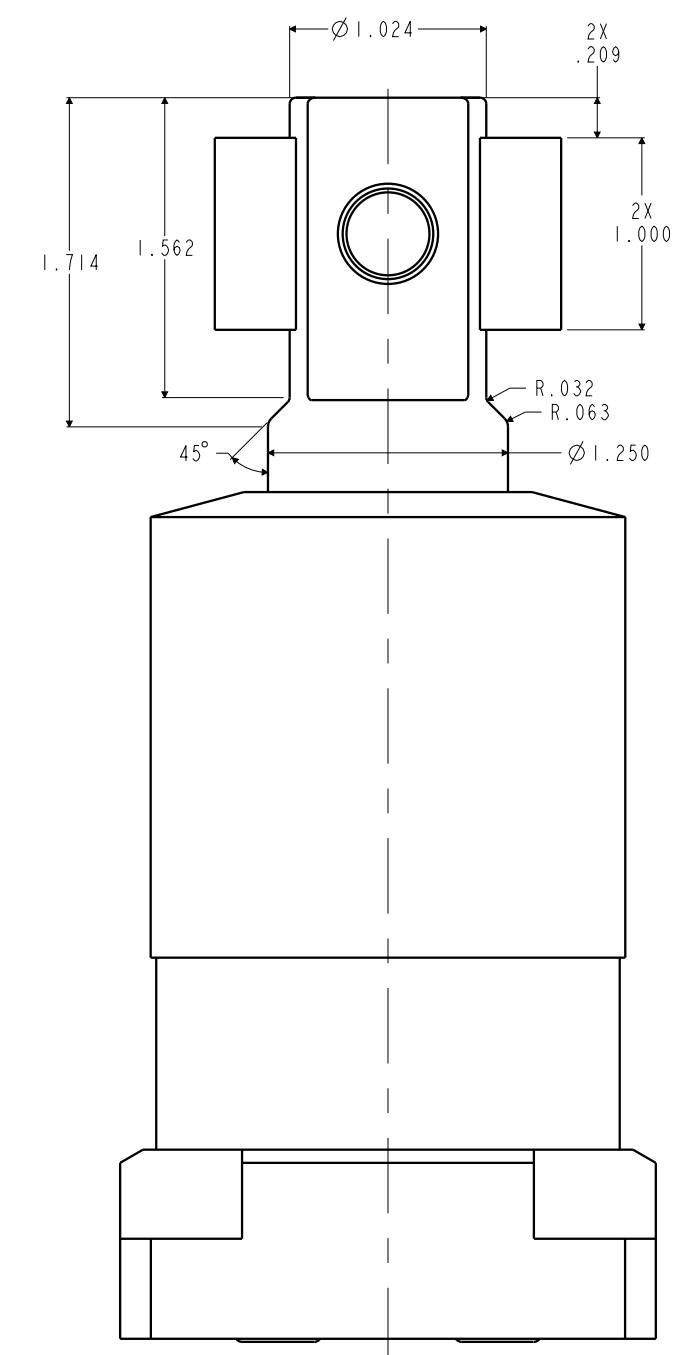
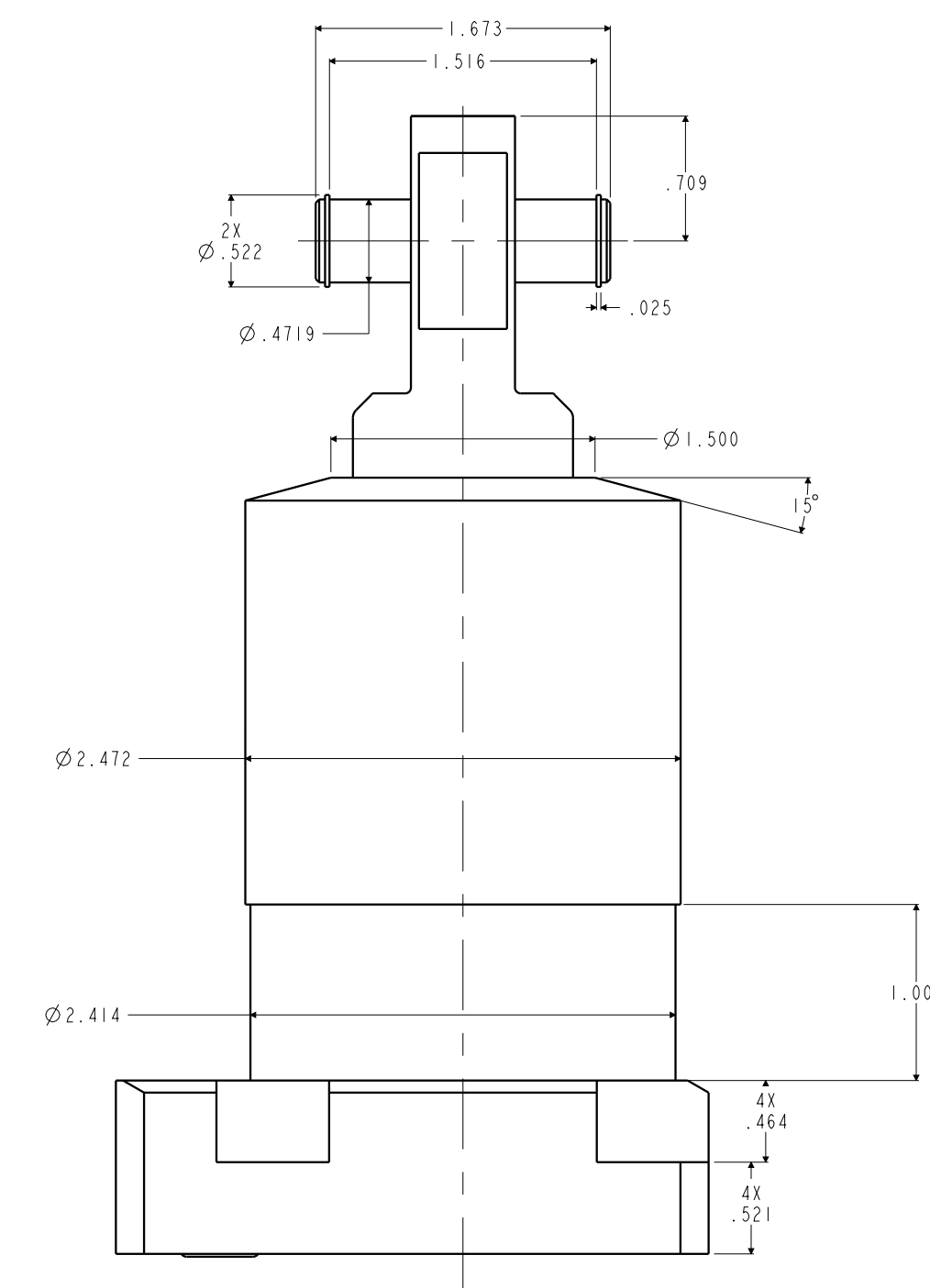
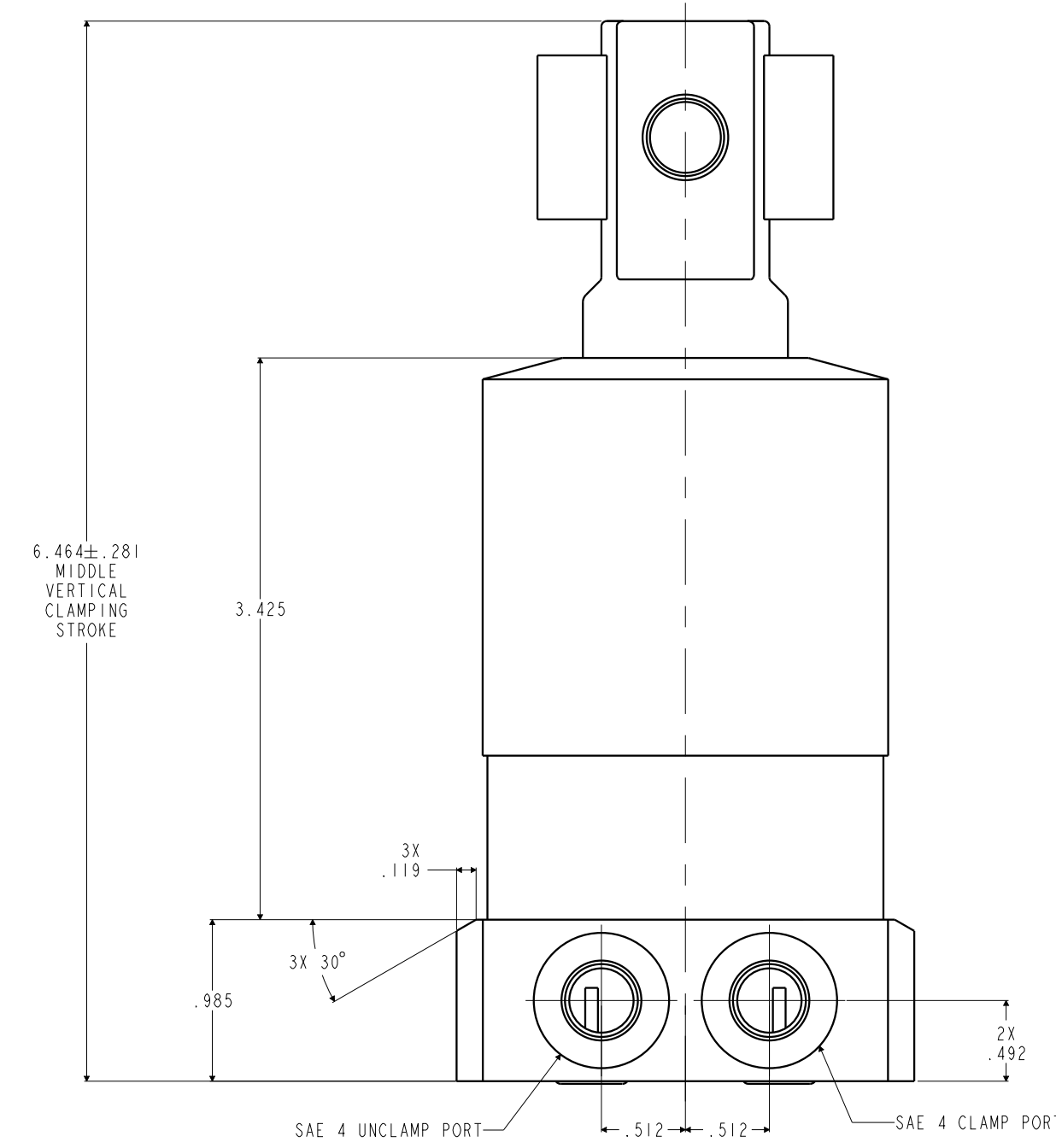
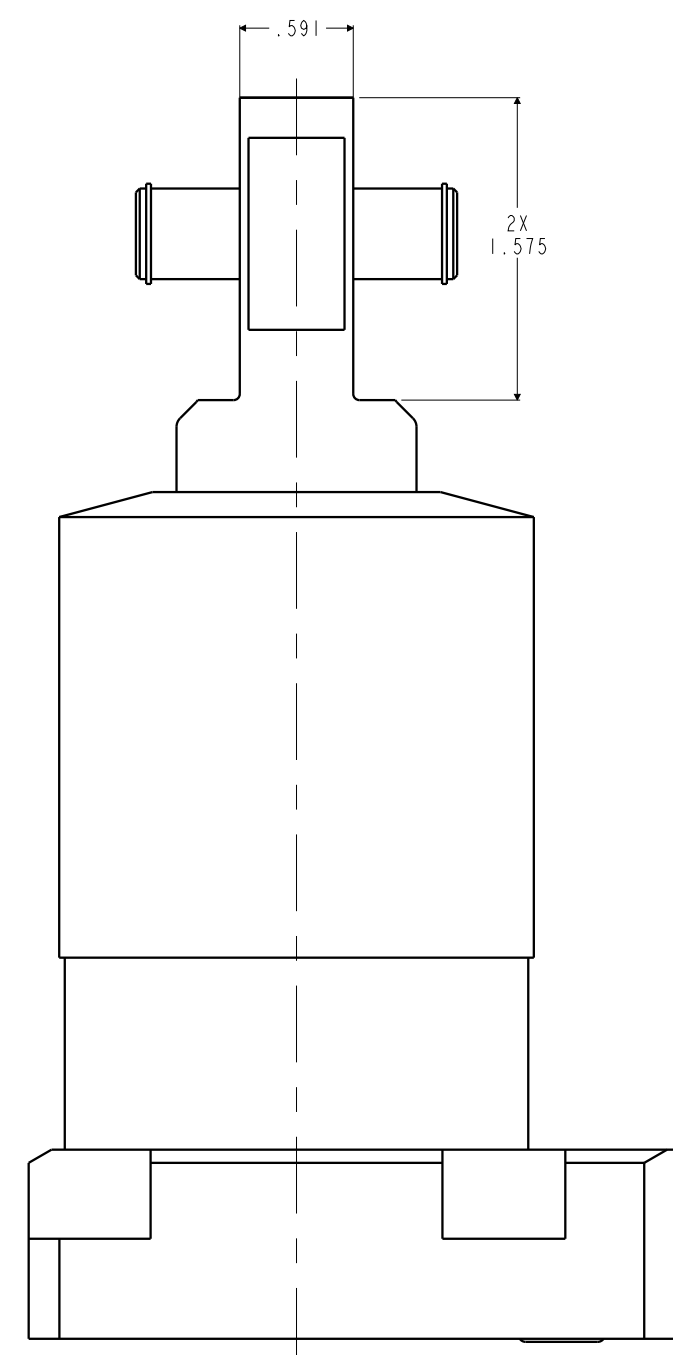
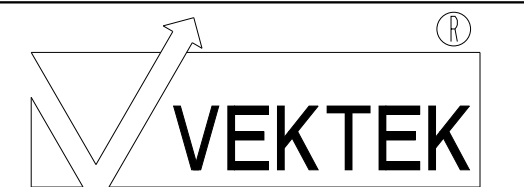


ILC14281821 REV A ECN 5921



CAD CONTROL  
DRAWING



VEKTEK, INC.  
1334 E. SIXTH AVE. P.O. BOX 625  
EMPORIA, KS. 66801 U.S.A.

A	5921	RELEASE	JDW	03/06/26
REV	IN ACCORDANCE WITH ECN	EFFECTIVE DATE	REVISED BY	DATE
DRW BY:	JDW	DRAWING STATUS: Released		
DATE:	03/06/26	PRODUCTION APPROVED FOR RELEASED STATUS ONLY		

14281821	A	SC,LP, BF,TC,5600,DA,LH,CLEVIS
REFERENCE MODEL	REF REV	
TOLERANCES DO NOT APPLY DIMENSIONS ARE NOMINAL		

SIZE	D	ILC14281821	REV A
------	---	-------------	-------

FORM FEG036, Rev. B