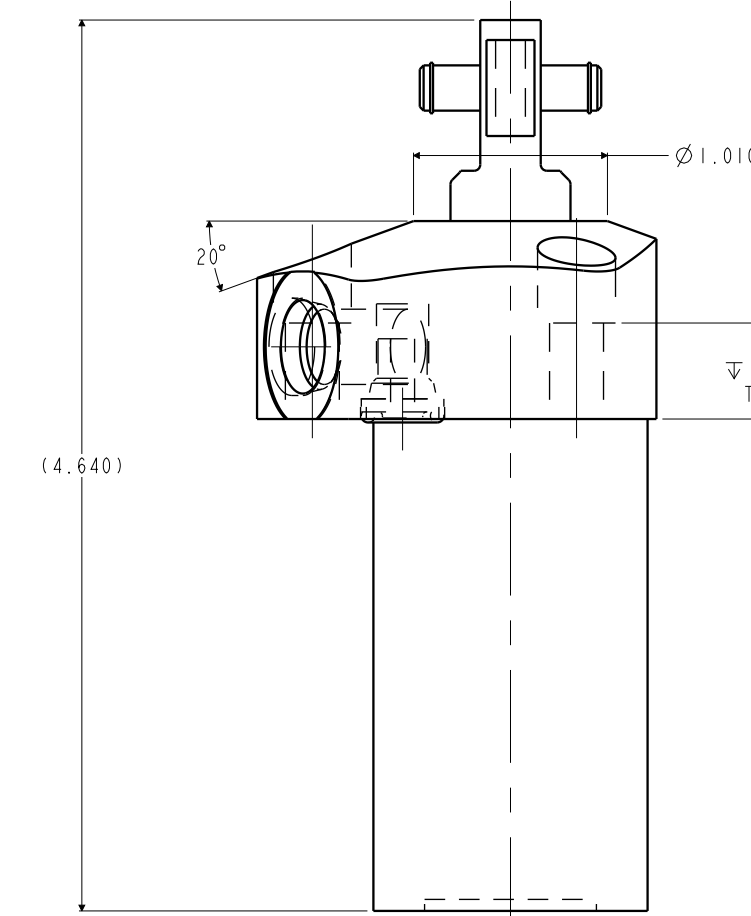
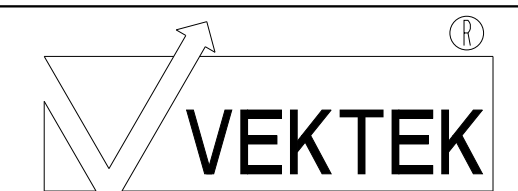


1LC14610920L REV A ECN 5873

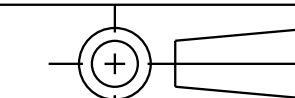
SCALE 1.000



CAD CONTROL
DRAWING



VEKTEK, INC.
1334 E. SIXTH AVE. P.O. BOX 625
EMPORIA, KS. 66801 U.S.A.



A	5873	RELEASE	JDW	12/29/25	14610920L	A	SC, TC, TF, SA, LH, 1400, CLEVIS
REV	IN ACCORDANCE WITH ECN	EFFECTIVE DATE	REVISED BY	DATE	REFERENCE MODEL	REF REV	
DRW BY:	JDW	DRAWING STATUS: Released			TOLERANCES DO NOT APPLY		SIZE
DATE:	12/29/25	PRODUCTION APPROVED FOR RELEASED STATUS ONLY			DIMENSIONS ARE NOMINAL		D

SIZE

DIMENSIONS ARE NOMINAL

SIZE

1LC14610920L REV A

FORM FEG036, Rev. B