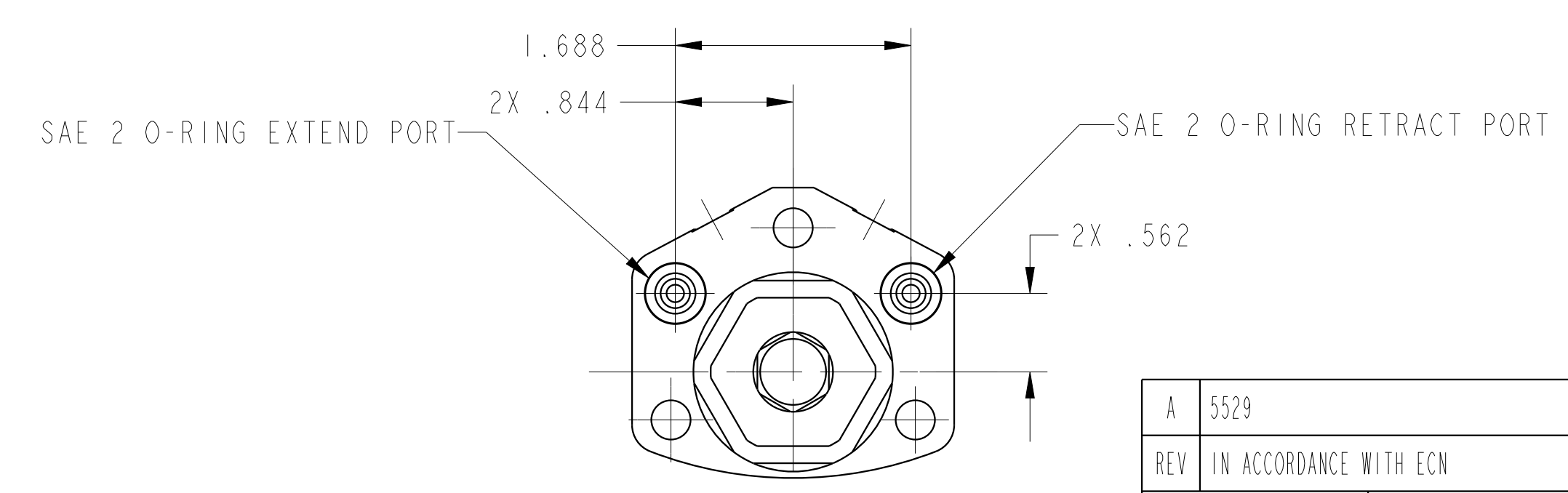


ILC14620901SUS REV A ECN 5529



CAD CONTROL DRAWING



VEKTEK, INC.  
 1334 E. SIXTH AVE. P.O. BOX 625  
 EMPORIA, KS. 66801 U.S.A.

A	5529	RELEASE	ALS	3/18/25
REV	IN ACCORDANCE WITH ECN	EFFECTIVE DATE	REVISED BY	DATE
DRW BY:	ALS	DRAWING STATUS: Released		
DATE:	10/25/24	PRODUCTION APPROVED FOR RELEASED STATUS ONLY		

14620901SUS	A
REFERENCE MODEL	REF REV
TOLERANCES DO NOT APPLY DIMENSIONS ARE NOMINAL	

SIZE	D	ILC14620901SUS	REV	A
FORM FEG036, Rev. B				