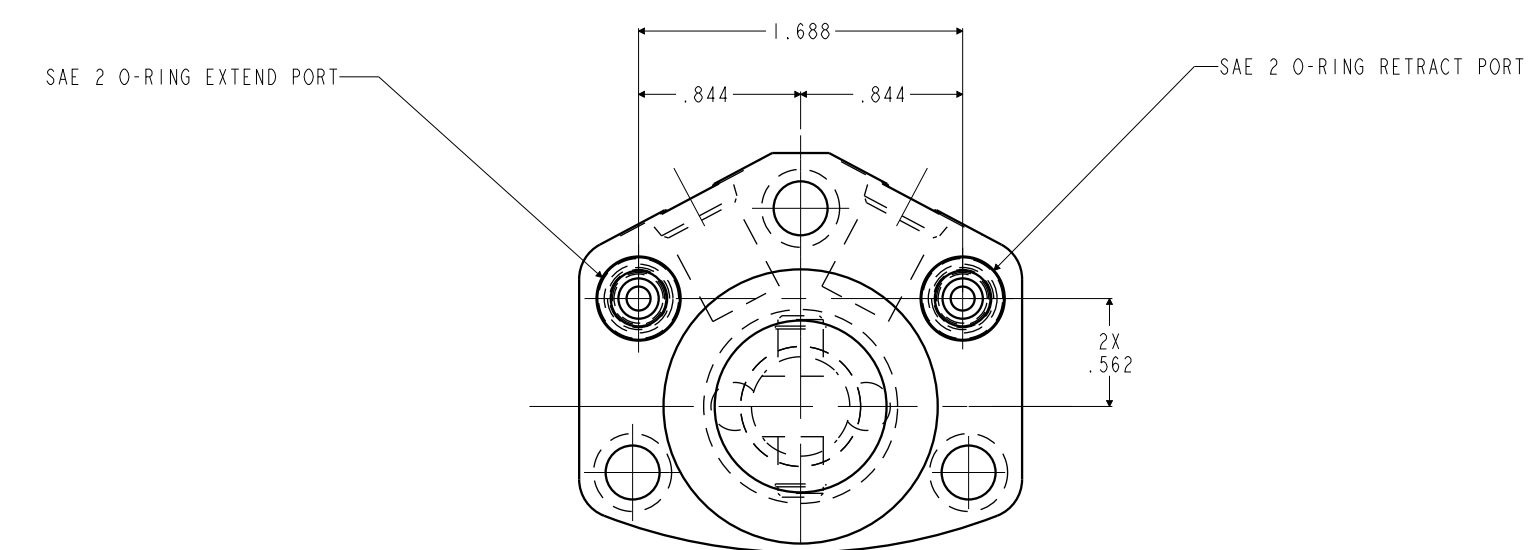
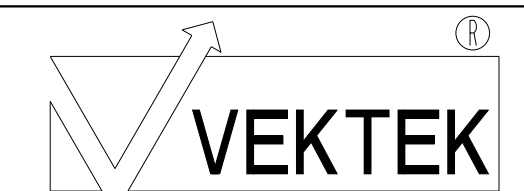


1LC14620921R REV A ECN 5873

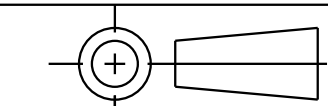
SCALE 1.000



CAD CONTROL DRAWING



VEKTEK, INC.
1334 E. SIXTH AVE. P.O. BOX 625
EMPORIA, KS. 66801 U.S.A.



A	5873	RELEASE	JDW	12/29/25	14620921R	A	SC, TC, TF, DA, RH, 1400, CLEVIS, LS
REV	IN ACCORDANCE WITH ECN	EFFECTIVE DATE	REVISED BY	DATE	REFERENCE MODEL	REF REV	
DRW BY:	JDW	DRAWING STATUS: Released			TOLERANCES DO NOT APPLY		SIZE
DATE:	12/29/25	PRODUCTION APPROVED FOR RELEASED STATUS ONLY			DIMENSIONS ARE NOMINAL		D
					1LC14620921R		REV A