

1

2

3

4

D

D

C

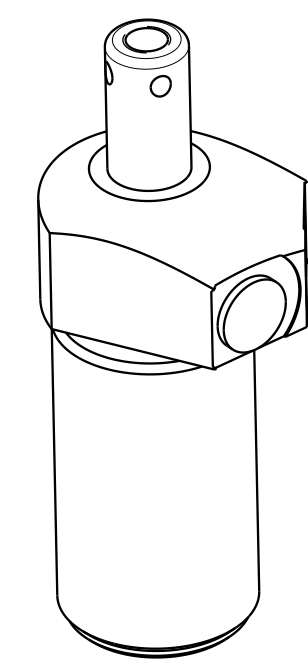
C

B

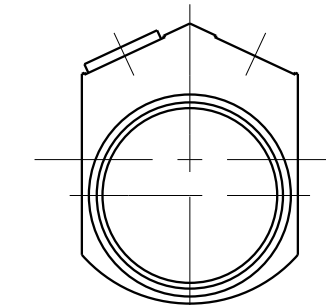
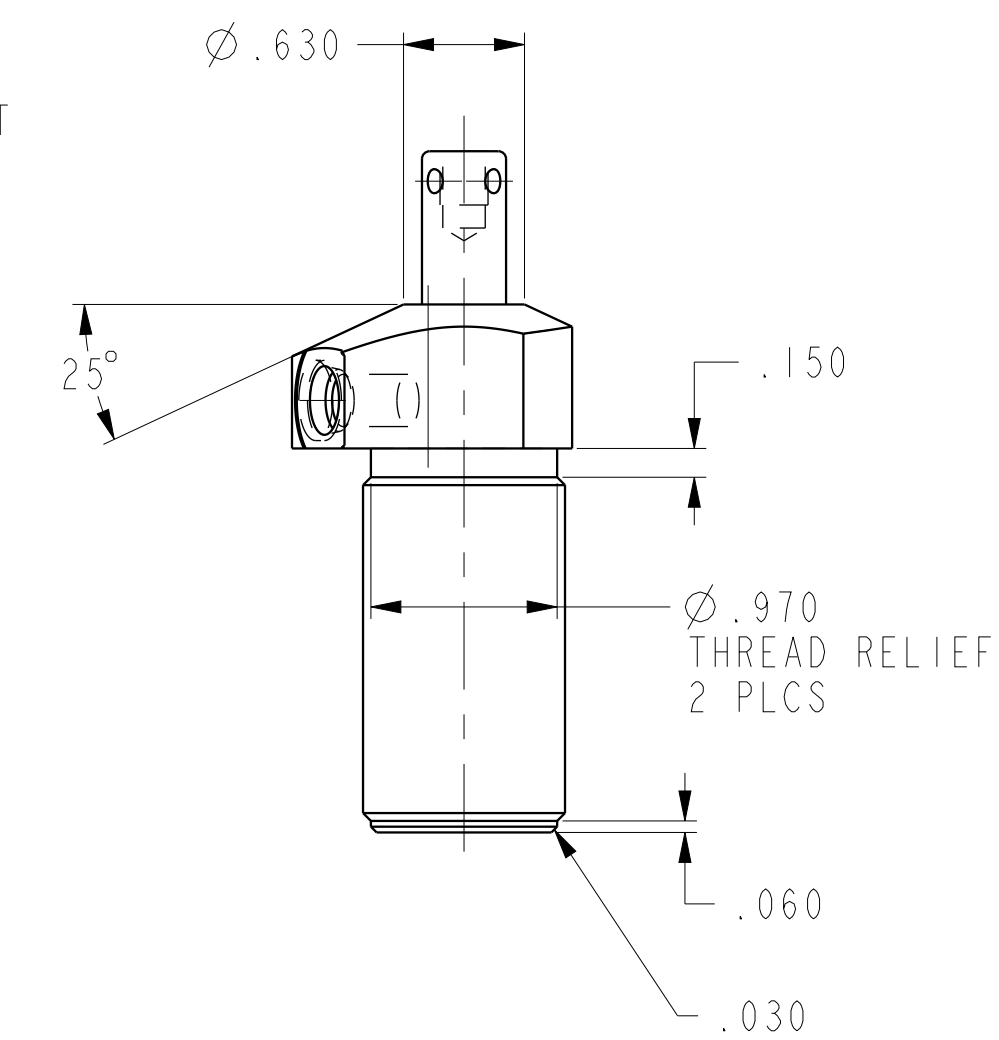
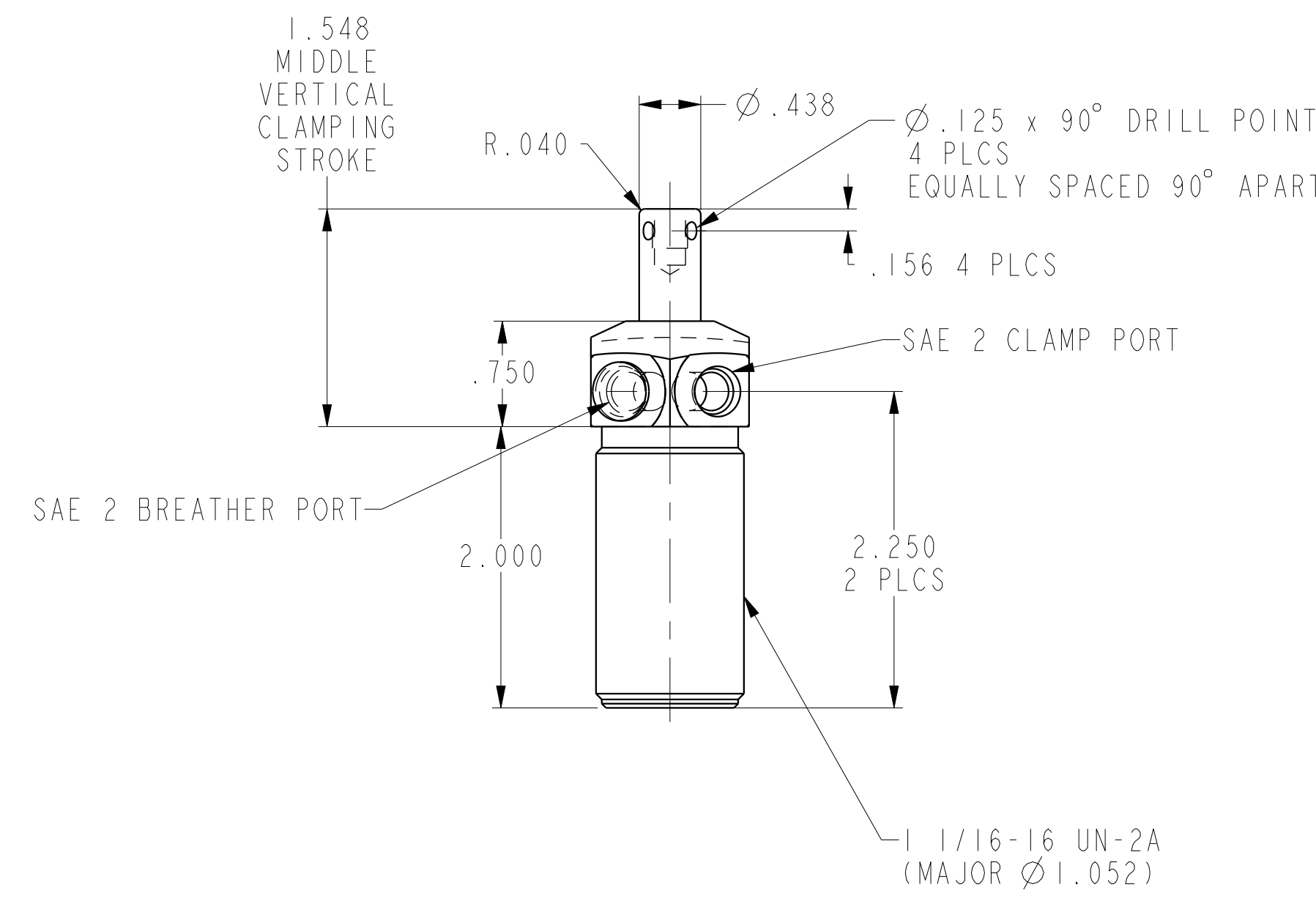
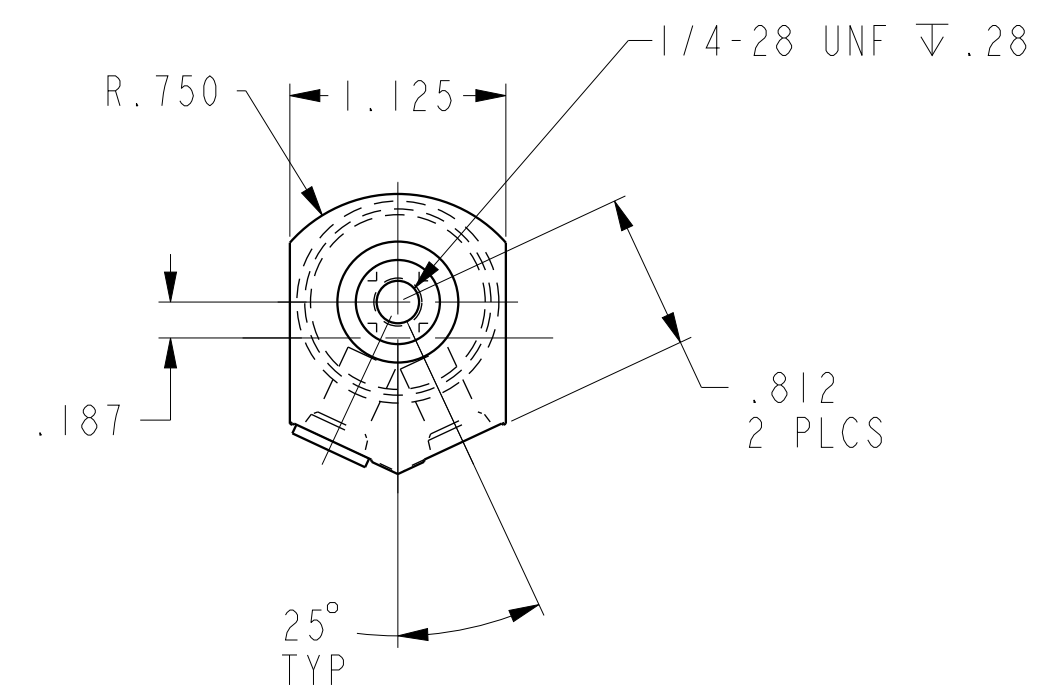
B

A

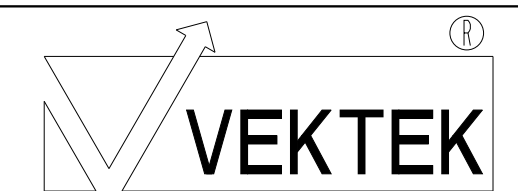
A



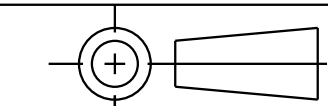
ILC15010503R REV A ECN 4609



CAD CONTROL DRAWING



VEKTEK, INC.
1334 E. SIXTH AVE. P.O. BOX 625
EMPORIA, KS. 66801 U.S.A.



| | | | | |
|---------|------------------------|--|------------|---------|
| A | 4609 | RELEASE | RLK | 1/20/22 |
| REV | IN ACCORDANCE WITH ECN | EFFECTIVE DATE | REVISED BY | DATE |
| DRW BY: | RLK | DRAWING STATUS: Released | | |
| DATE: | 1/20/22 | PRODUCTION APPROVED FOR RELEASED STATUS ONLY | | |

TOLERANCES DO NOT APPLY
DIMENSIONS ARE NOMINAL

SIZE D ILC15010503R REV A