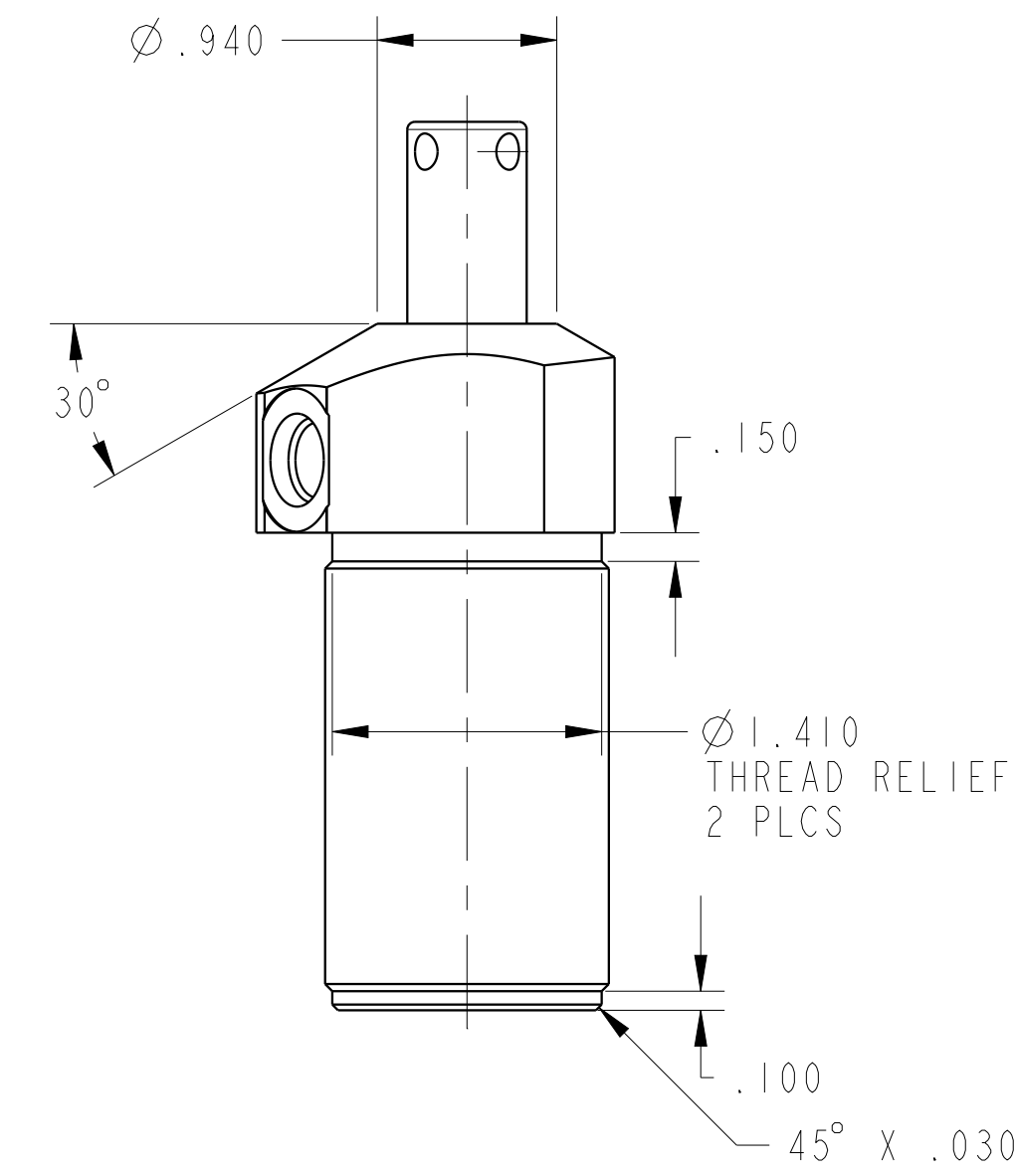
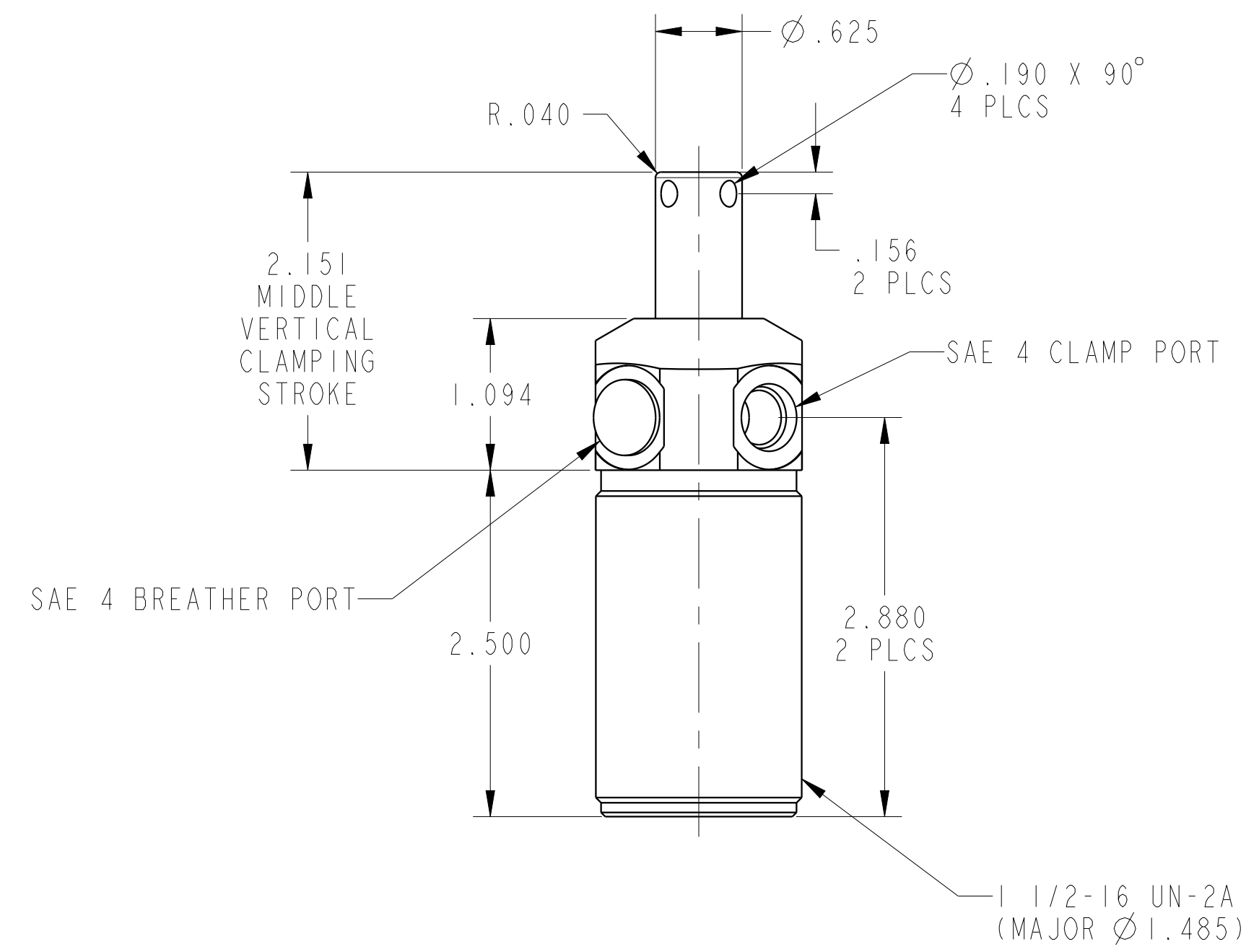
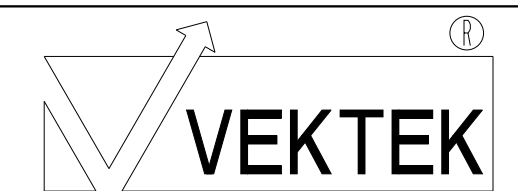


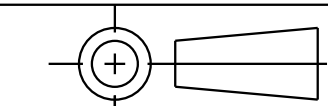
ILC15010901R REVA ECN4452



CAD CONTROL
DRAWING



VEKTEK, INC.
1334 E. SIXTH AVE. P.O. BOX 625
EMPORIA, KS. 66801 U.S.A.



A	4452	RELEASE	ALS	5/21/21
REV	IN ACCORDANCE WITH ECN	EFFECTIVE DATE	REVISED BY	DATE
DRW BY:	ALS	DRAWING STATUS: Released		
DATE:	5/21/21	PRODUCTION APPROVED FOR RELEASED STATUS ONLY		

15010901R	A	SC, TB, 1100, SA, RH
REFERENCE MODEL	REF REV	
TOLERANCES DO NOT APPLY DIMENSIONS ARE NOMINAL		SIZE D

ILC15010901R	REV A
FORM FEG036, Rev. B	