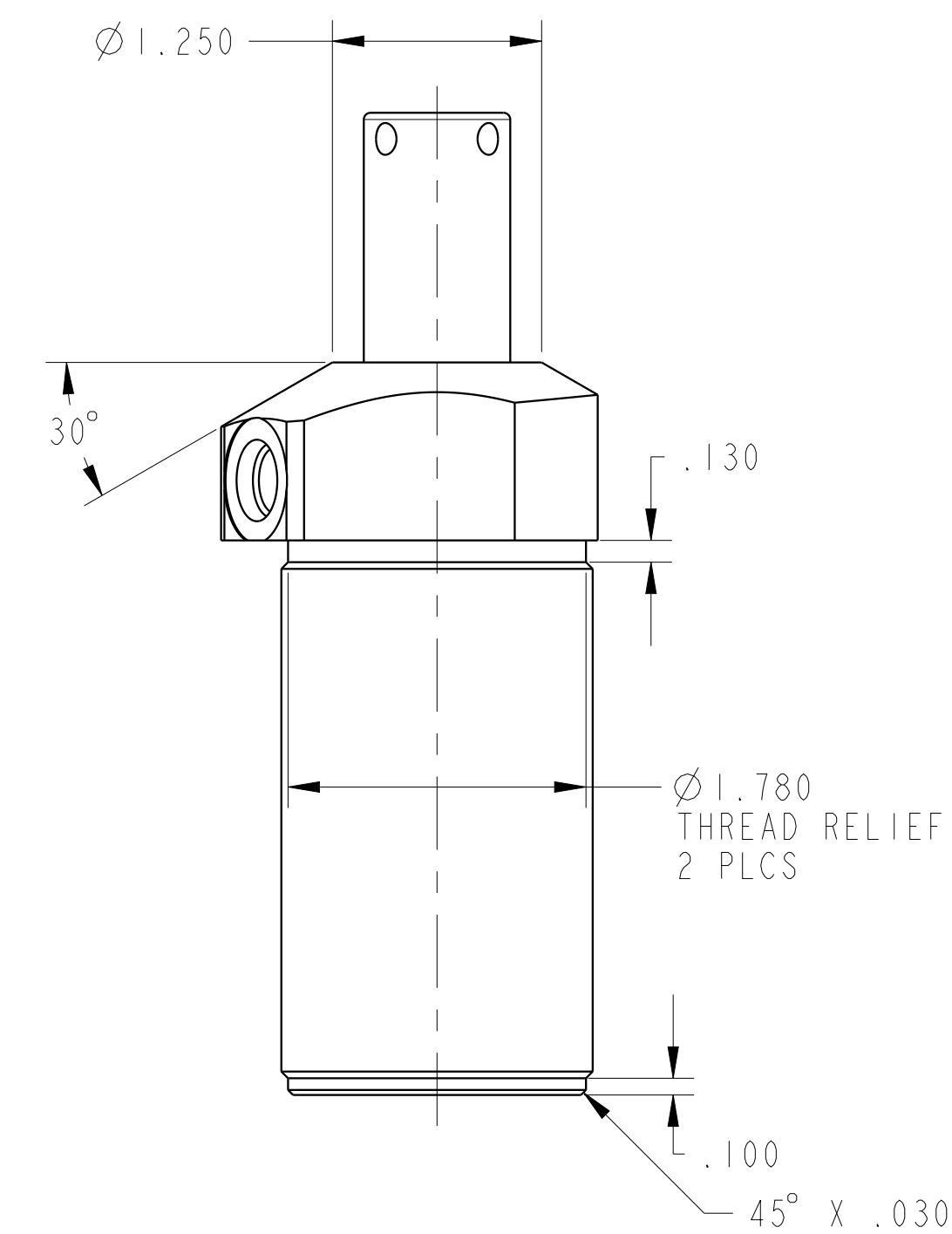
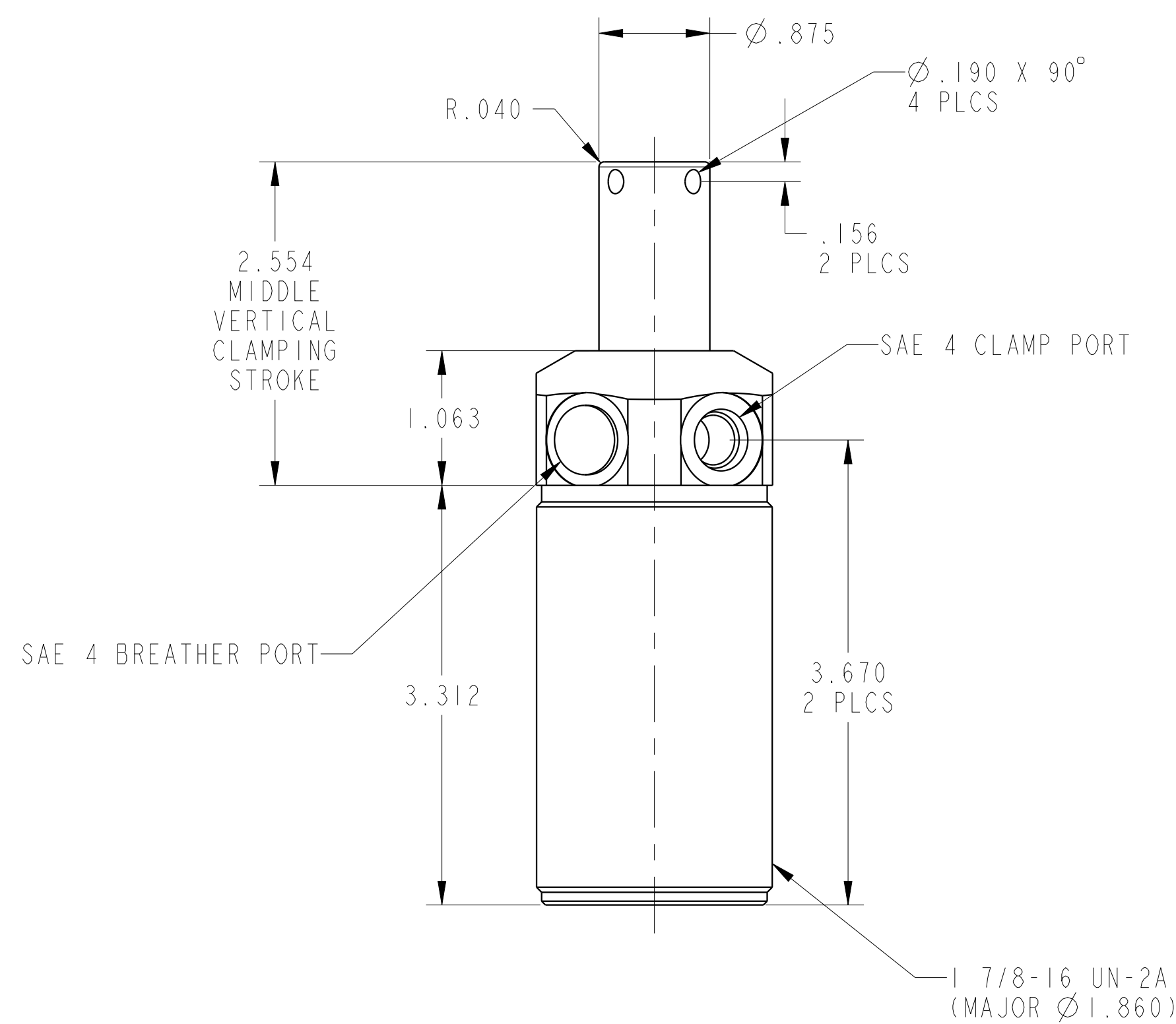
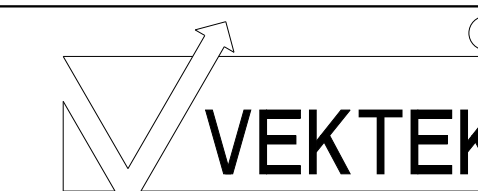


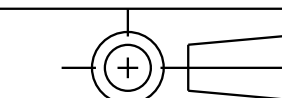
1LC15011304L REVA ECN4452



CAD CONTROL
DRAWING



VEKTEK, INC.
1334 E. SIXTH AVE. P.O. BOX 625
EMPORIA, KS. 66801 U.S.A.



A	4452	RELEASE	ALS	5/21/21	15011304L	A	SC, TB, 2600, SA, LH
REV	IN ACCORDANCE WITH ECN	EFFECTIVE DATE	REVISED BY	DATE	REFERENCE MODEL	REF REV	
DRW BY:	ALS	DRAWING STATUS: Released			TOLERANCES DO NOT APPLY DIMENSIONS ARE NOMINAL		SIZE D
DATE:	5/21/21	PRODUCTION APPROVED FOR RELEASED STATUS ONLY			1LC15011304L		REV A