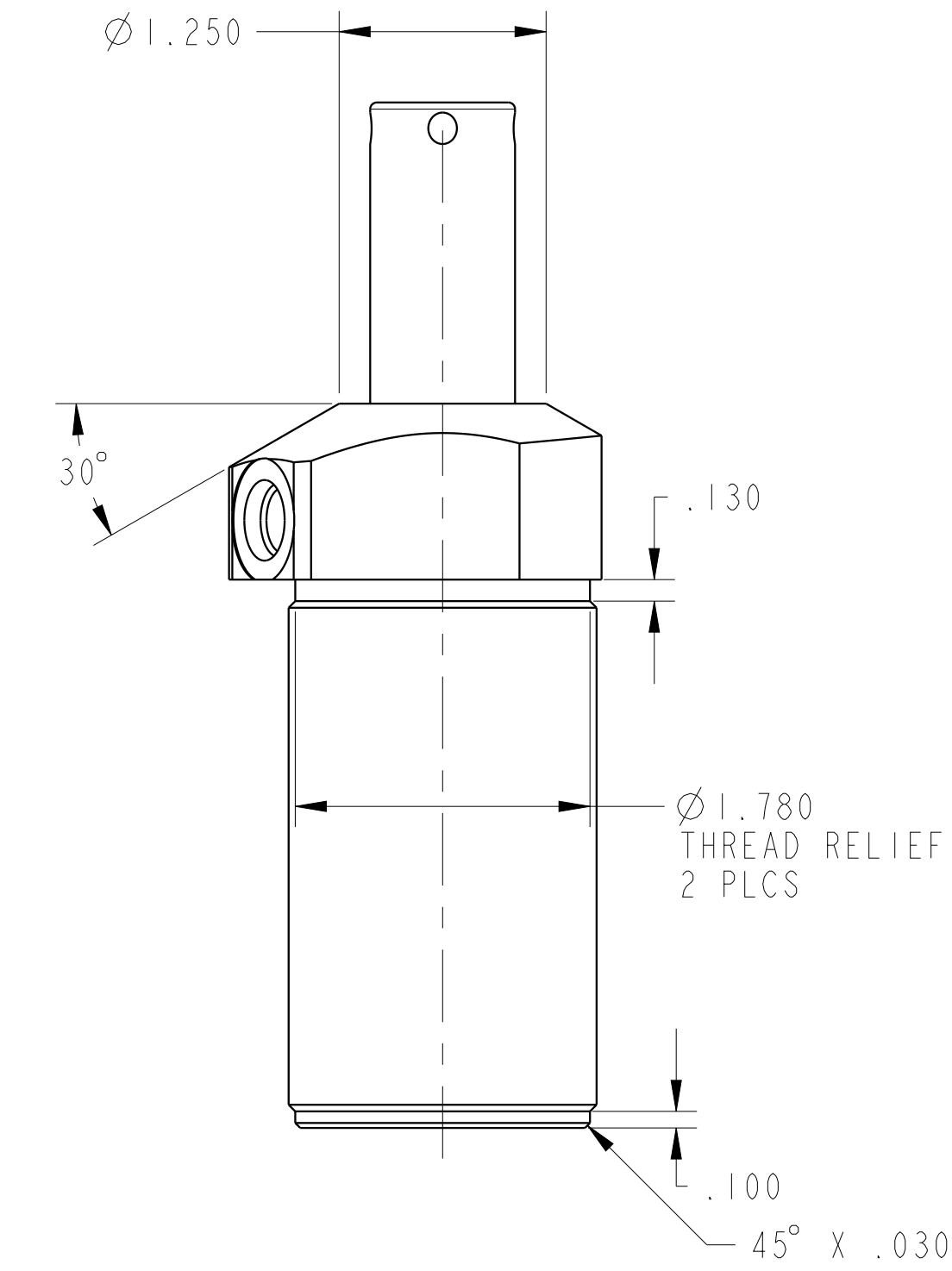
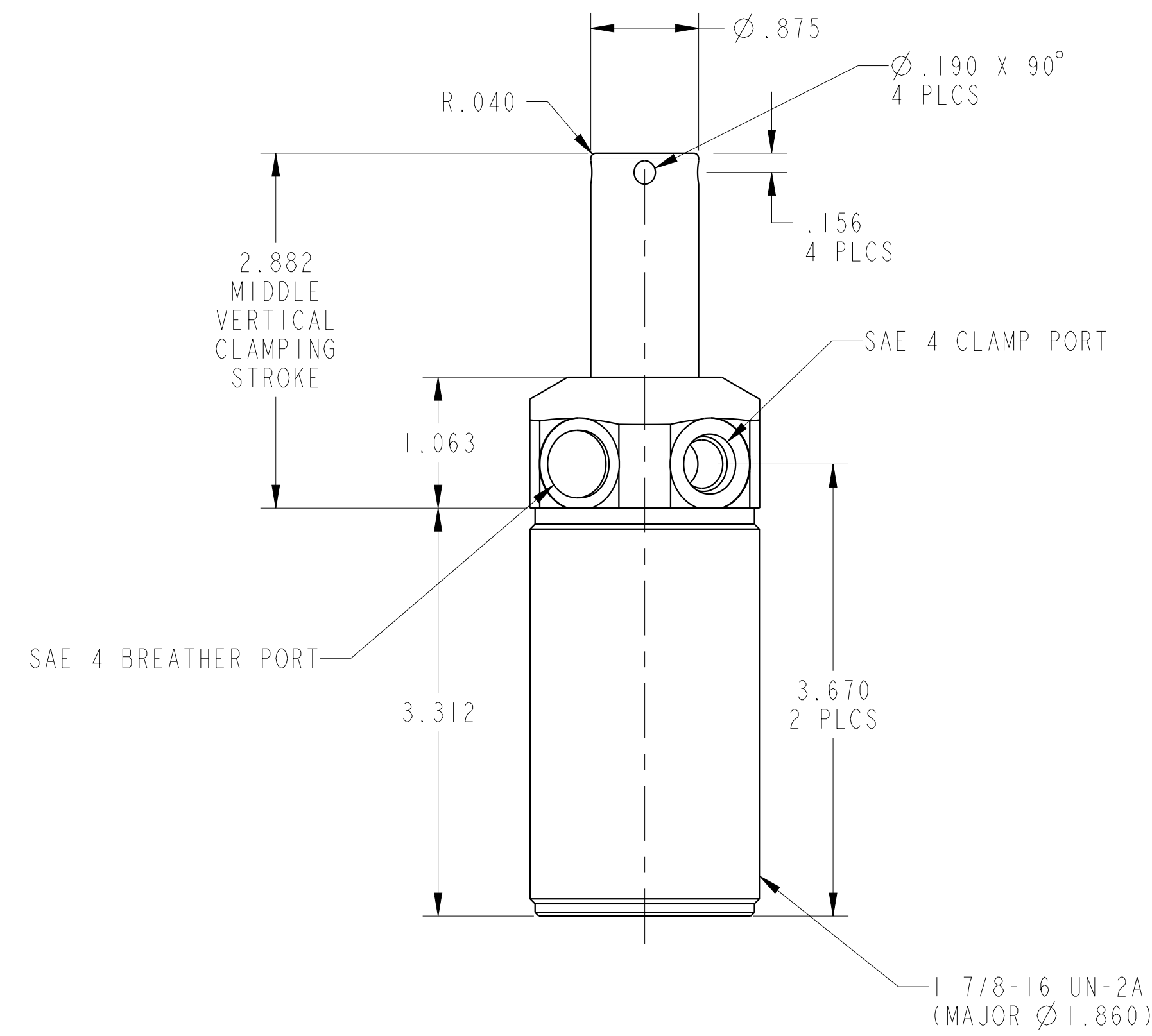
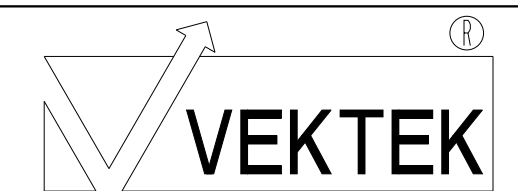


1LC15011304S REVA ECN4452

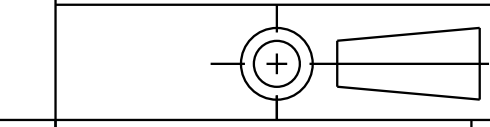


CAD CONTROL DRAWING



VEKTEK, INC.
1334 E. SIXTH AVE. P.O. BOX 625
EMPORIA, KS. 66801 U.S.A.

A	4452	RELEASE	ALS	5/21/21
REV	IN ACCORDANCE WITH ECN	EFFECTIVE DATE	REVISED BY	DATE
DRW BY: ALS		DRAWING STATUS: Released		
DATE: 5/21/21		PRODUCTION APPROVED FOR RELEASED STATUS ONLY		



TOLERANCES DO NOT APPLY
DIMENSIONS ARE NOMINAL

SIZE D 1LC15011304S REV A

FORM FEG036, Rev. I