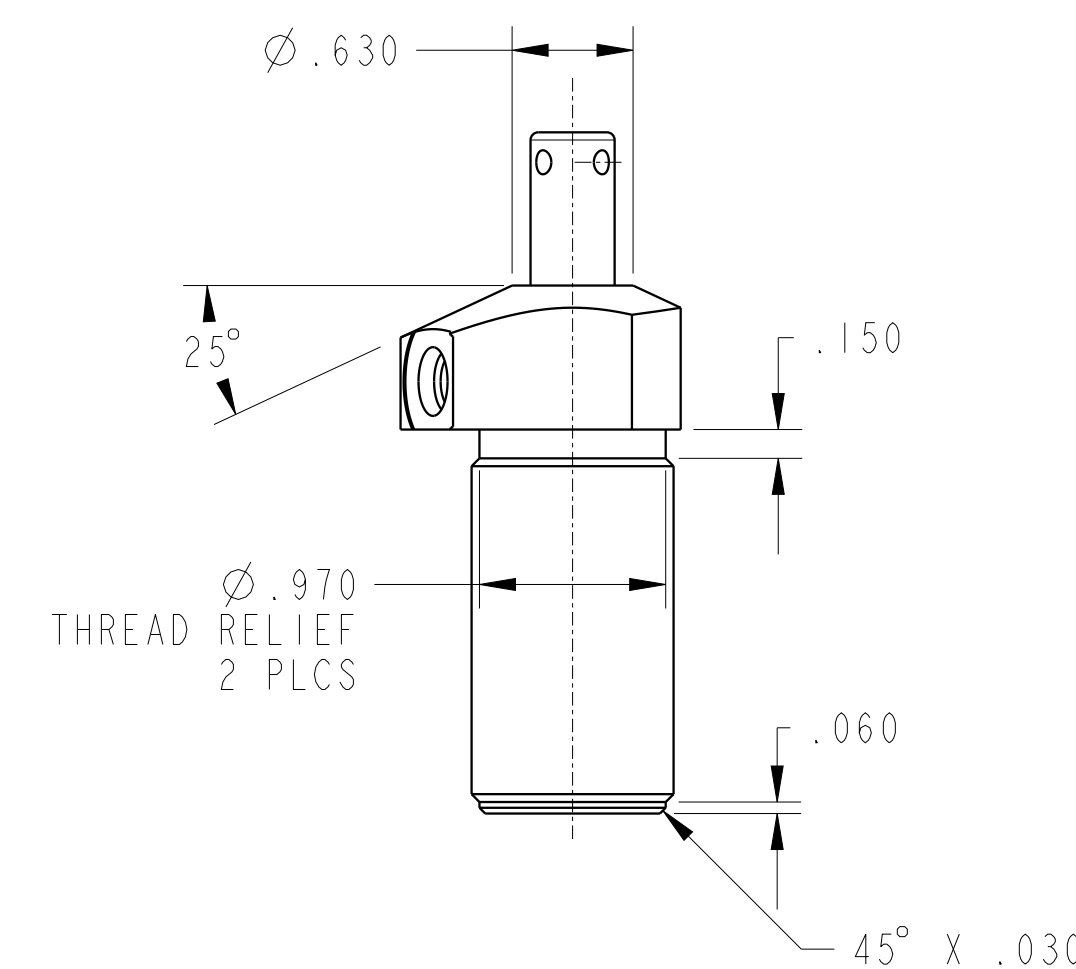
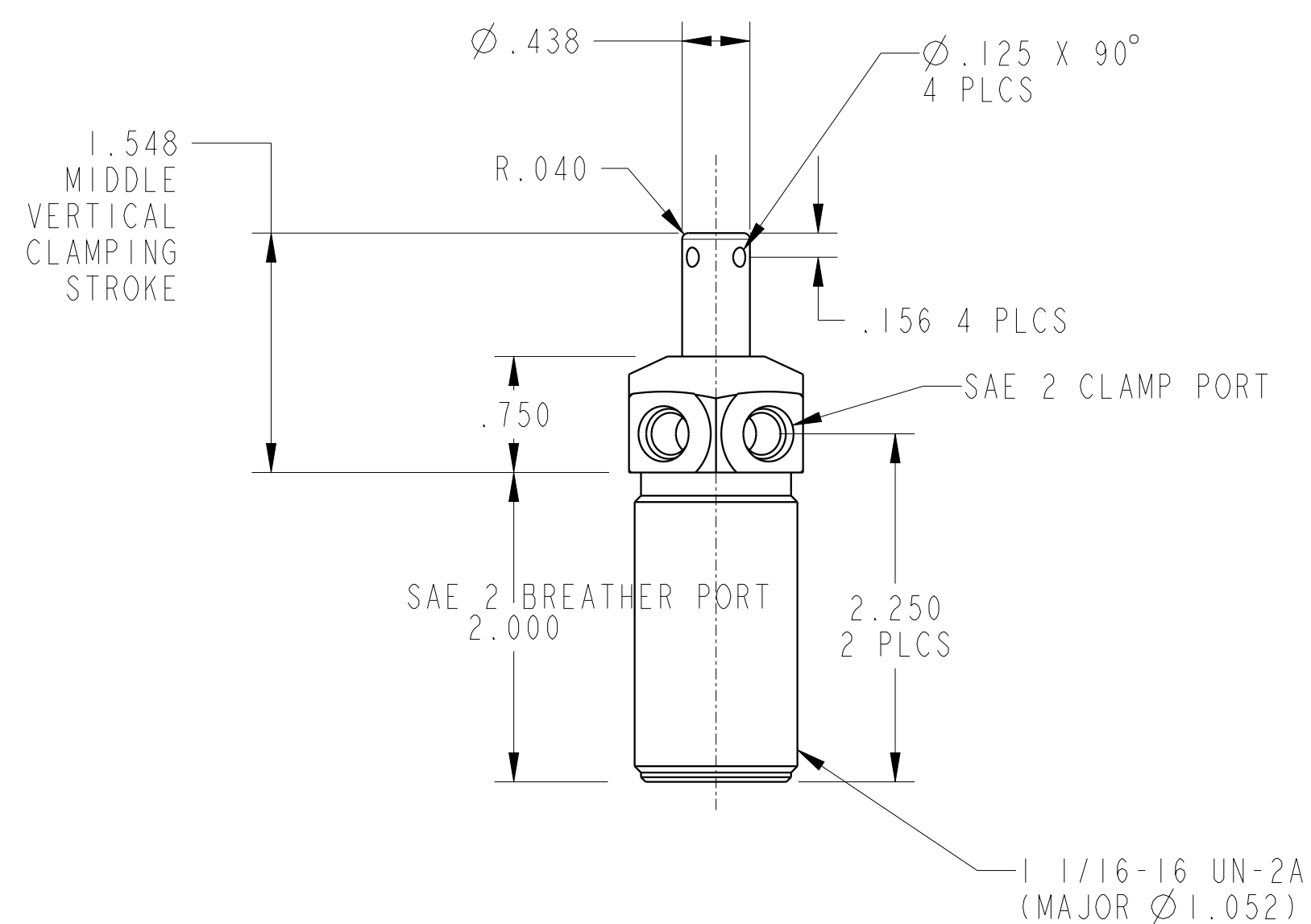
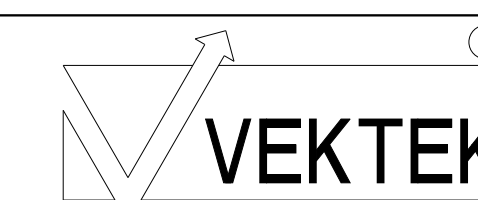


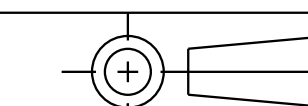
ILC15020503L REVA ECN4609



CAD CONTROL  
DRAWING



VEKTEK, INC.  
1334 E. SIXTH AVE. P.O. BOX 625  
EMPORIA, KS. 66801 U.S.A.



A	4609	RELEASE	RLK	1/20/22	15020503L	A	SC, TB, 450, DA, LH
REV	IN ACCORDANCE WITH ECN	EFFECTIVE DATE	REVISED BY	DATE	REFERENCE MODEL	REF REV	
DRW BY:	RLK	DRAWING STATUS: Released			TOLERANCES DO NOT APPLY DIMENSIONS ARE NOMINAL		SIZE D
DATE:	1/20/22	PRODUCTION APPROVED FOR RELEASED STATUS ONLY			ILC15020503L		REV A