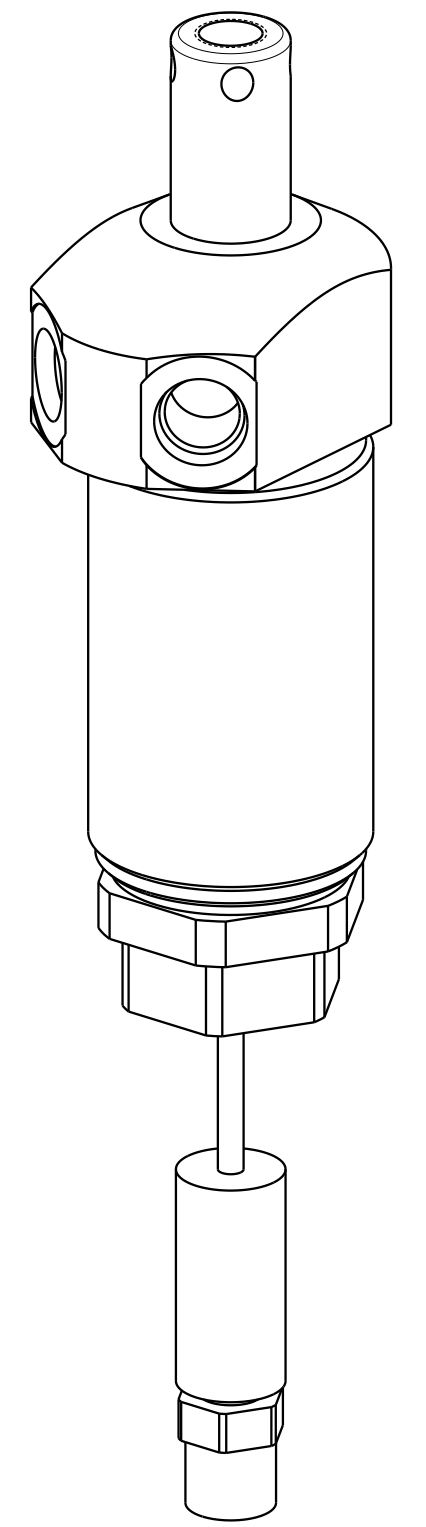
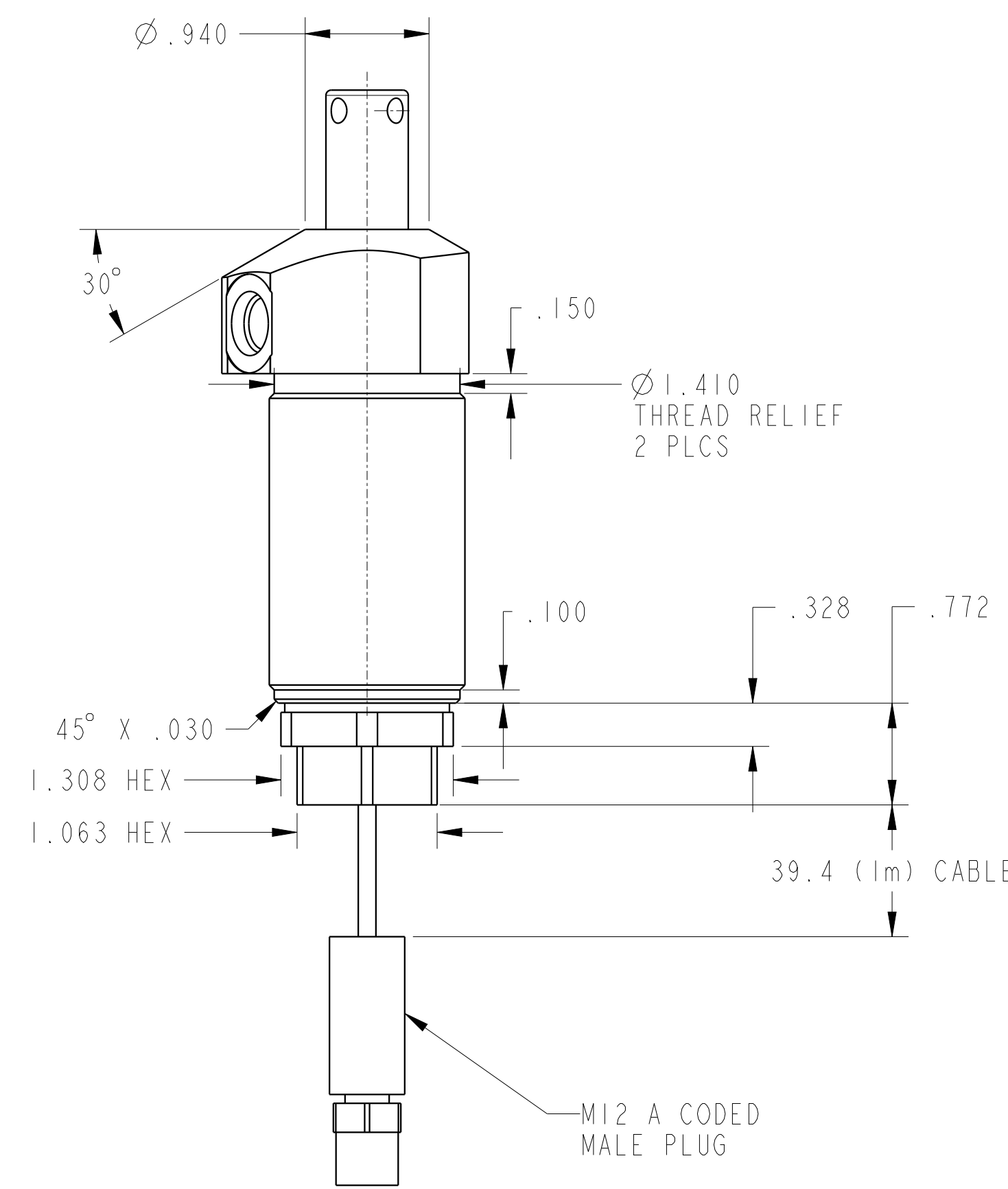
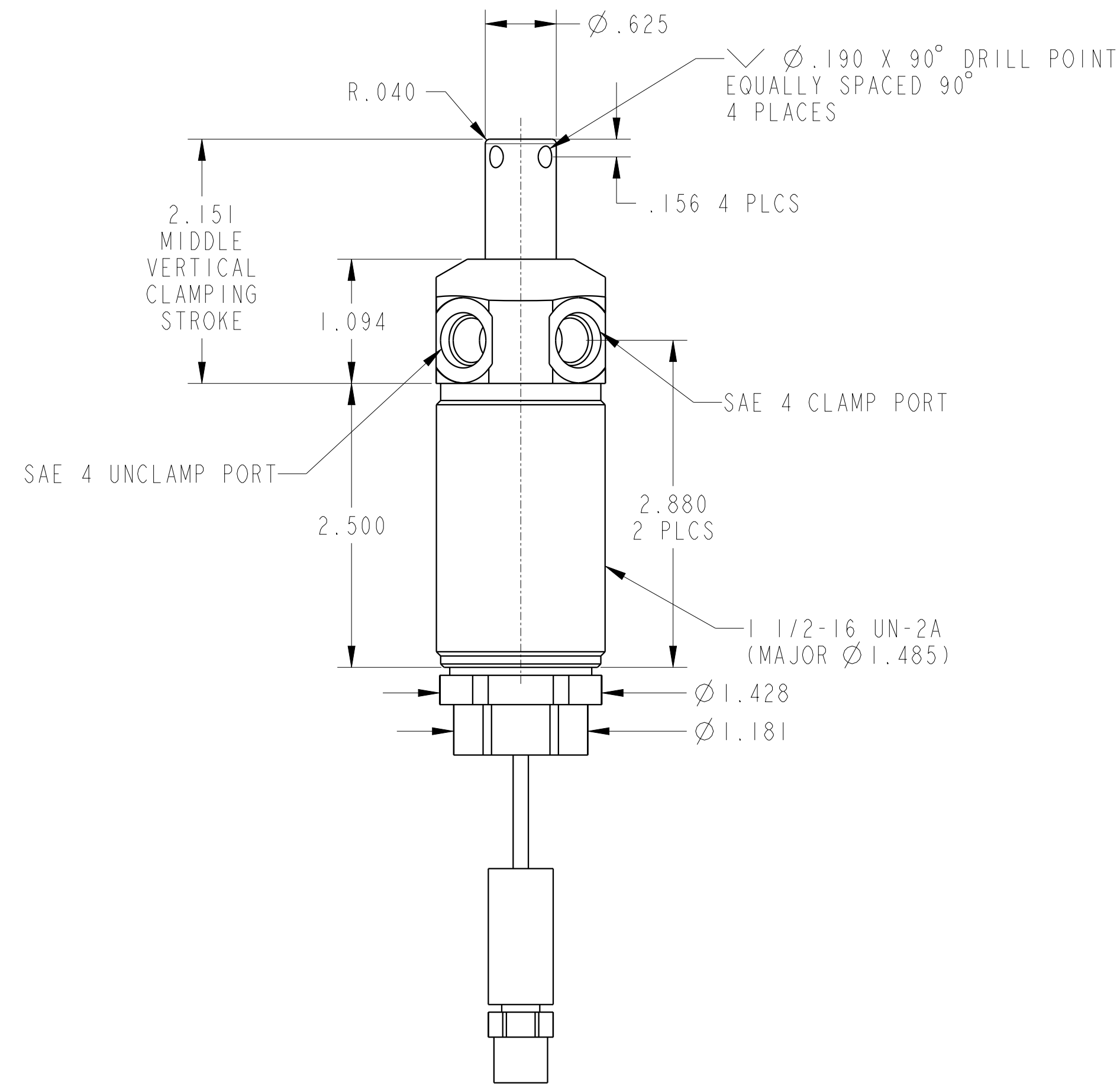
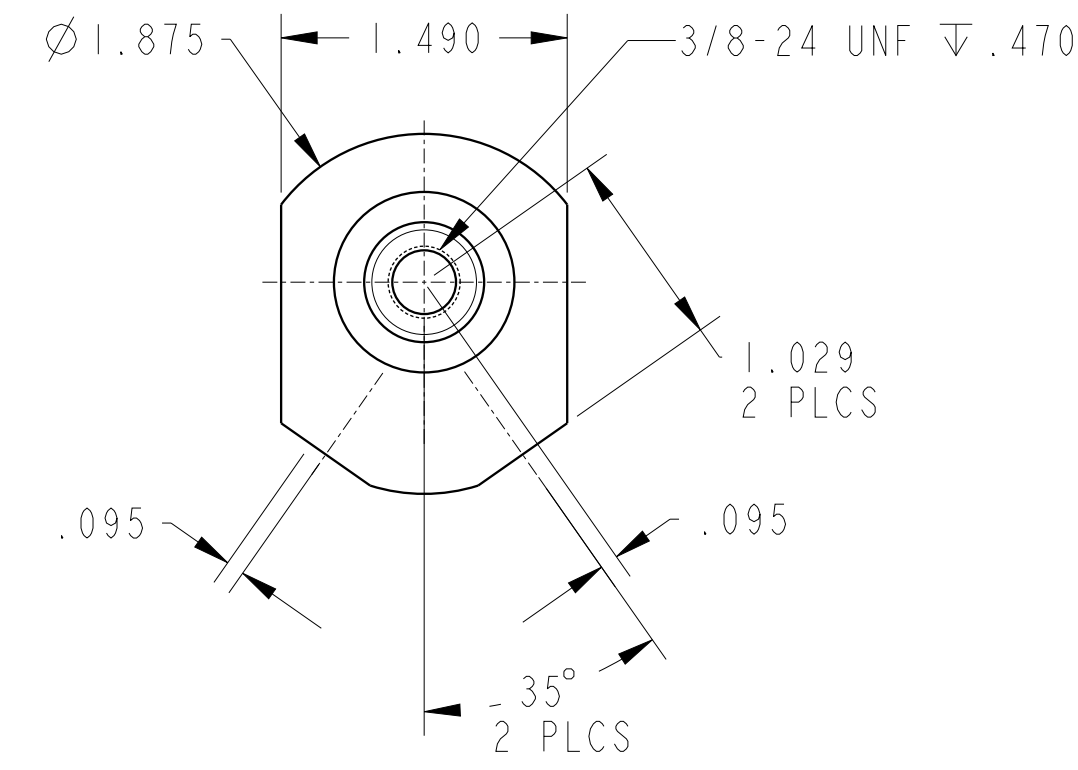


1

2

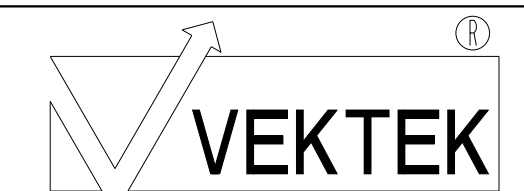
3

4



ILC15020901RUS REVA ECN5529

CAD CONTROL
DRAWING



VEKTEK, INC.
1334 E. SIXTH AVE. P.O. BOX 625
EMPORIA, KS. 66801 U.S.A.

A	5529	RELEASE	ALS	3/18/25	15020901RUS	A	SC, TB, 1100, DA, RH, US
REV	IN ACCORDANCE WITH ECN	EFFECTIVE DATE	REVISED BY	DATE	REFERENCE MODEL	REF REV	
DRW BY:	ALS	DRAWING STATUS: Released			TOLERANCES DO NOT APPLY DIMENSIONS ARE NOMINAL		SIZE D
DATE:	10/25/24	PRODUCTION APPROVED FOR RELEASED STATUS ONLY			ILC15020901RUS		REV A

2

3

4

SHEET 1 OF 1