

1

2

3

4

D

D

C

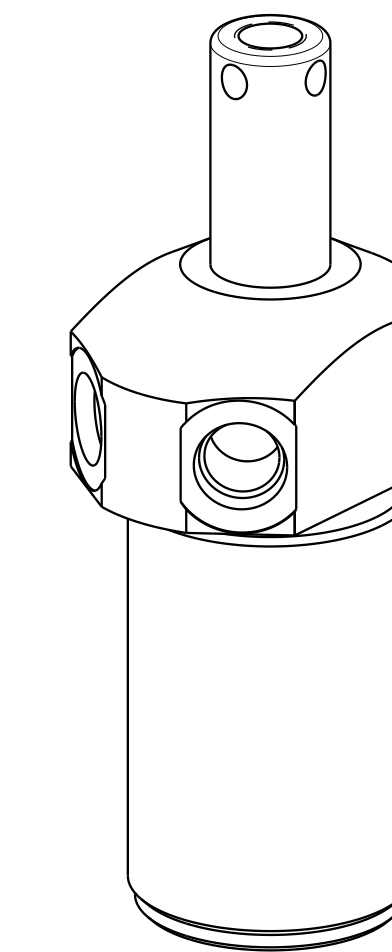
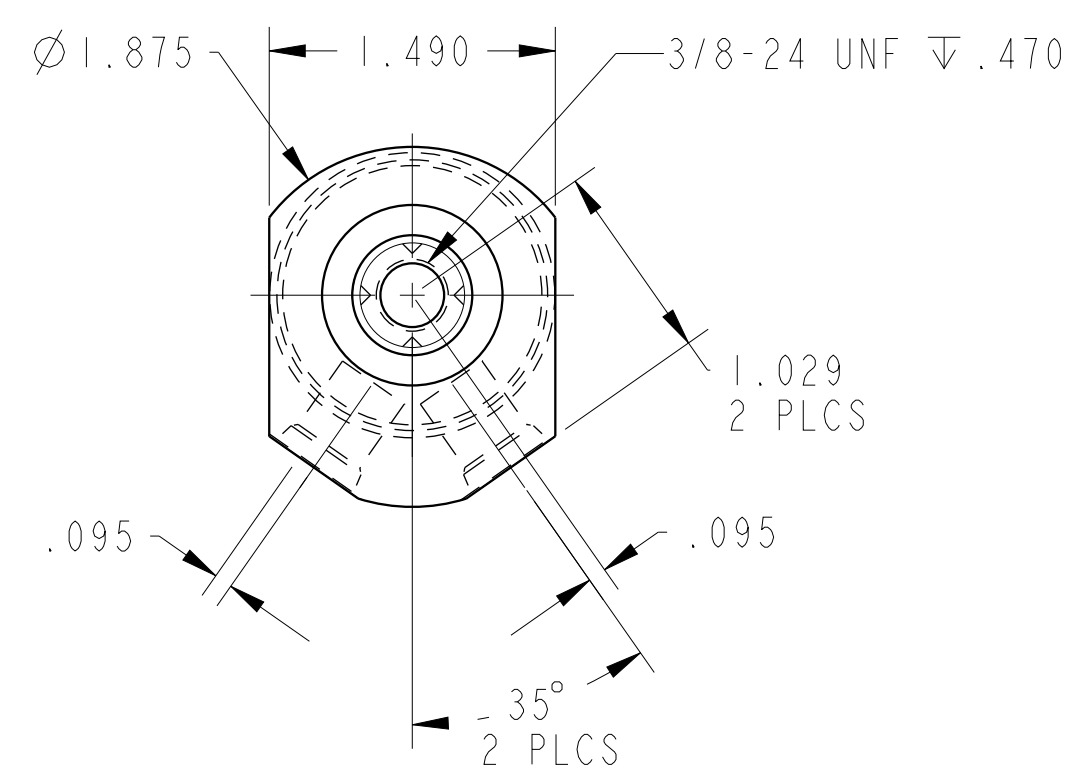
C

B

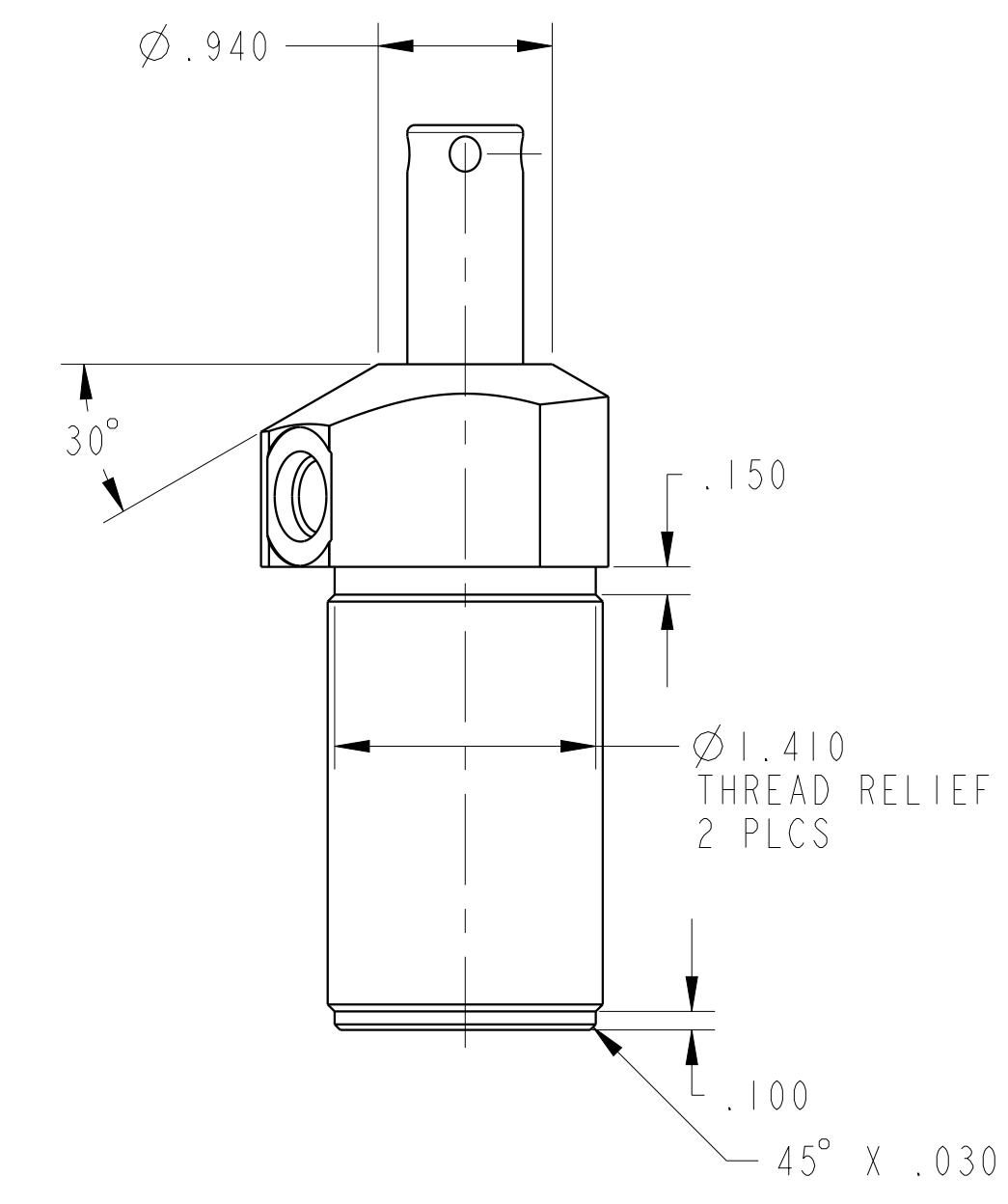
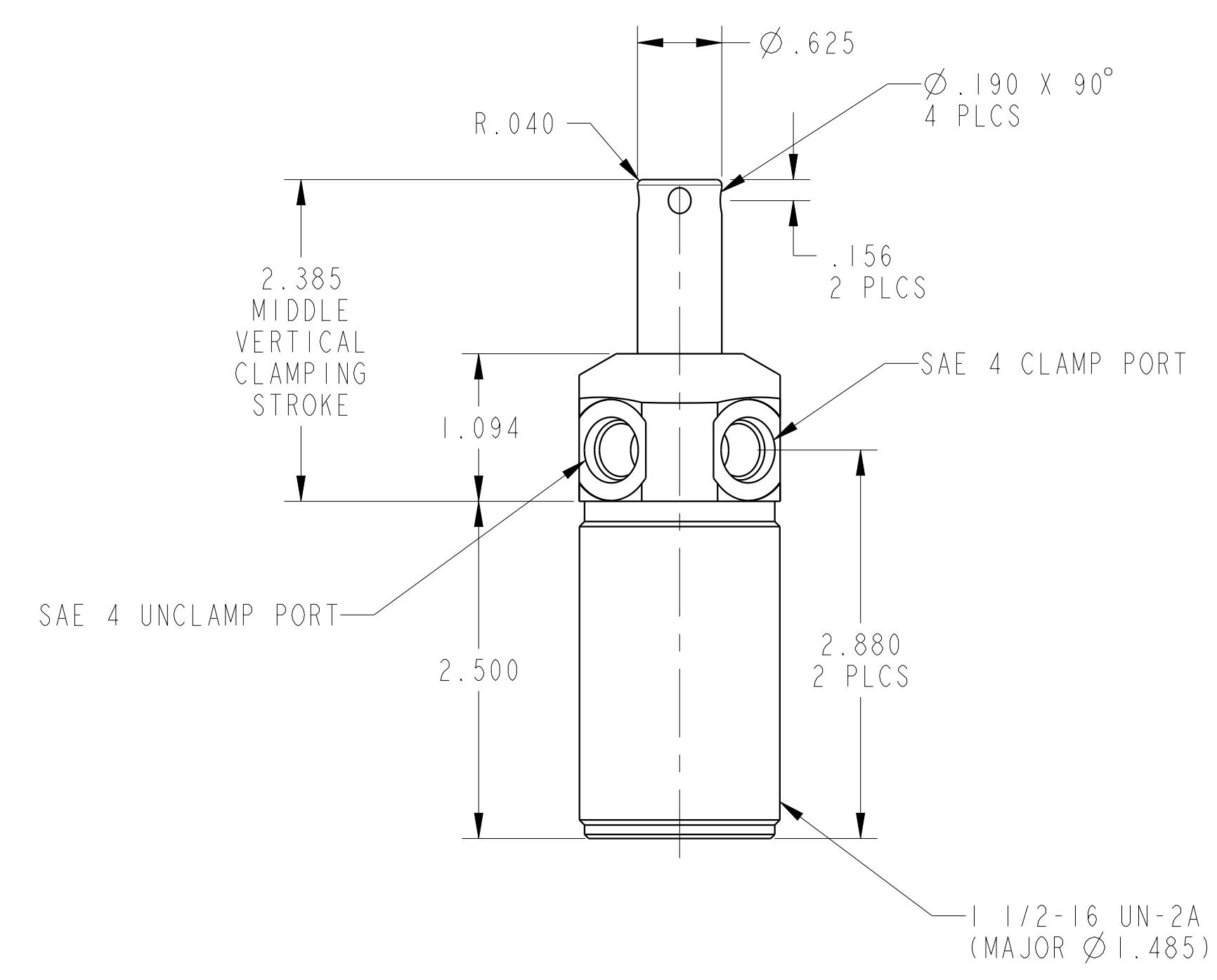
B

A

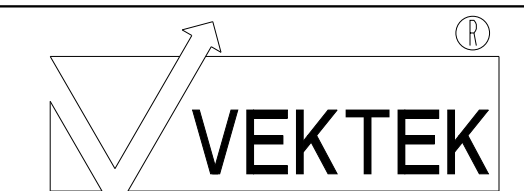
A



ILC15020901S REVA ECN4452

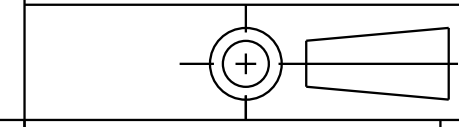


CAD CONTROL
DRAWING



VEKTEK, INC.
1334 E. SIXTH AVE. P.O. BOX 625
EMPORIA, KS. 66801 U.S.A.

A	4452	RELEASE	ALS	5/21/21
REV	IN ACCORDANCE WITH ECN	EFFECTIVE DATE	REVISED BY	DATE
DRW BY:	ALS	DRAWING STATUS: Released		
DATE:	5/21/21	PRODUCTION APPROVED FOR RELEASED STATUS ONLY		



TOLERANCES DO NOT APPLY
DIMENSIONS ARE NOMINAL

SIZE D ILC15020901S REV A