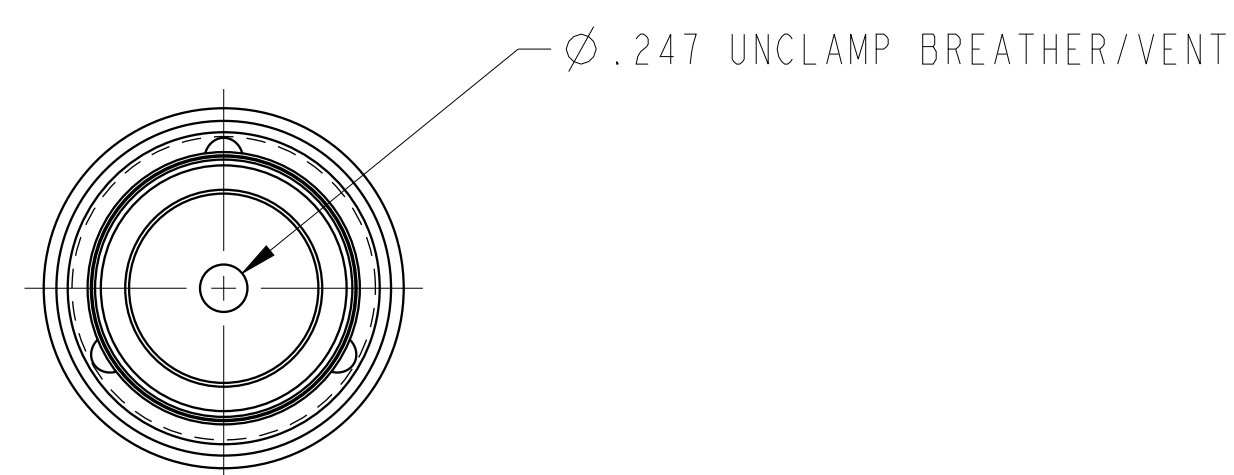
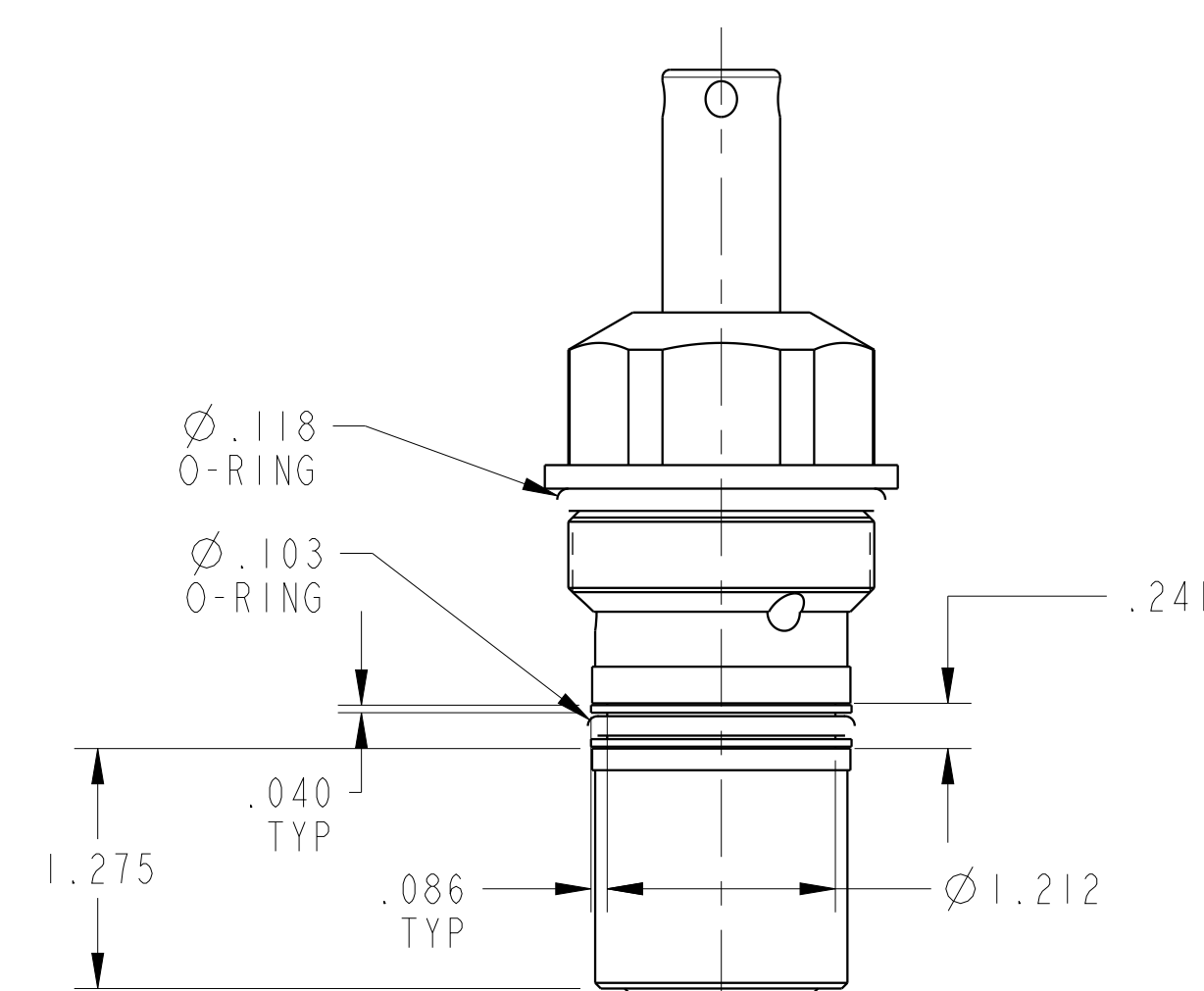
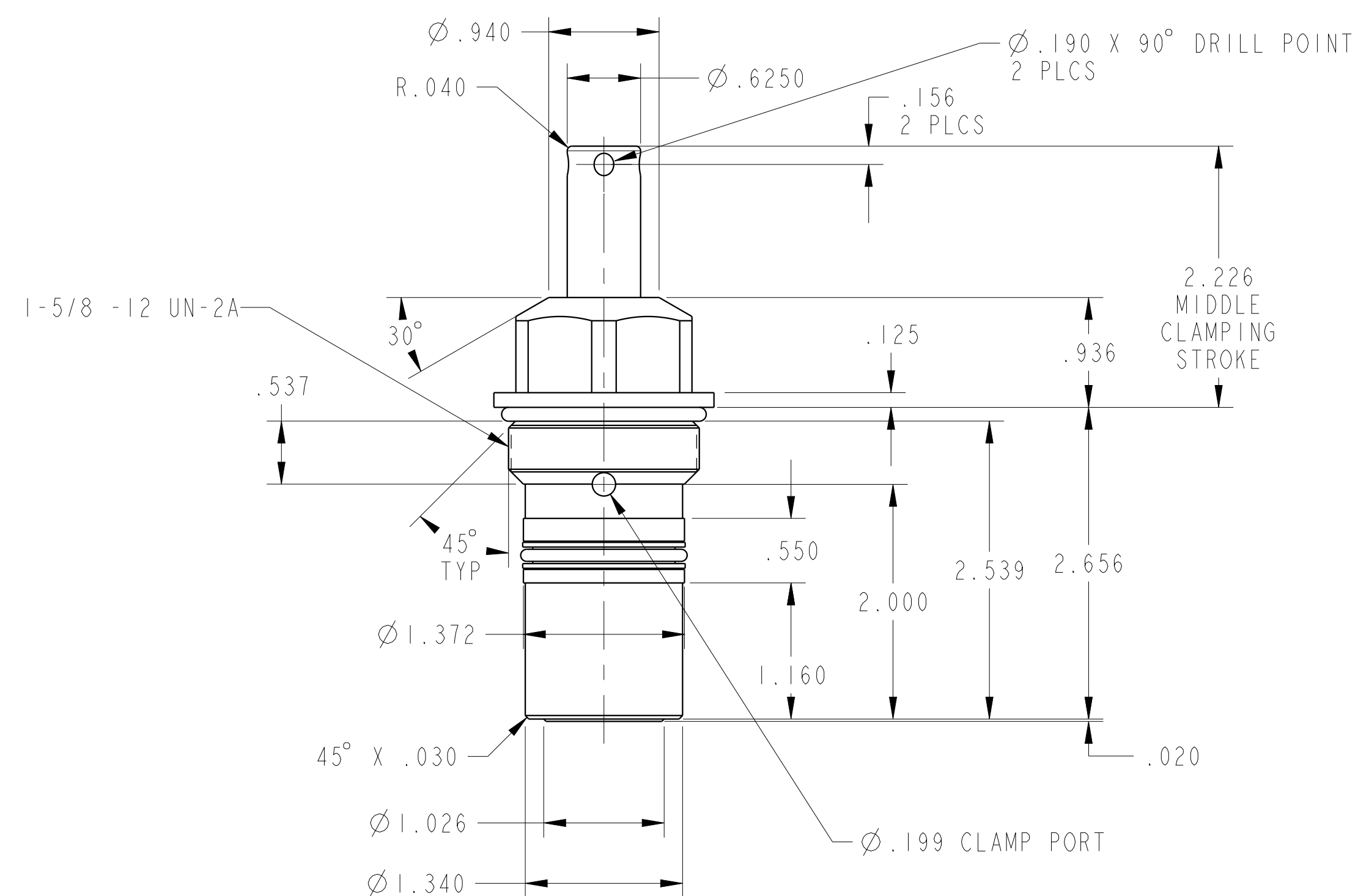
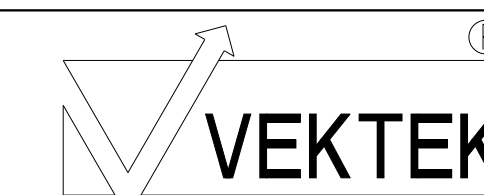


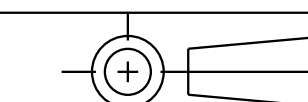
ILC15110902S REV A ECN4446



CAD CONTROL DRAWING



VEKTEK, INC.
1334 E. SIXTH AVE. P.O. BOX 625
EMPORIA, KS. 66801 U.S.A.



| | | | | | | | |
|---------|------------------------|--|------------|---------|---|---------|-----------------------|
| A | 4446 | RELEASED | ALS | 5/17/21 | 15110902S | A | SC, CM, 1100, SA, STR |
| REV | IN ACCORDANCE WITH ECN | EFFECTIVE DATE | REVISED BY | DATE | REFERENCE MODEL | REF REV | |
| DRW BY: | ALS | DRAWING STATUS: Released | | | TOLERANCES DO NOT APPLY DIMENSIONS ARE NOMINAL | | SIZE D |
| DATE: | 5/17/21 | PRODUCTION APPROVED FOR RELEASED STATUS ONLY | | | ILC15110902S | | REV A |