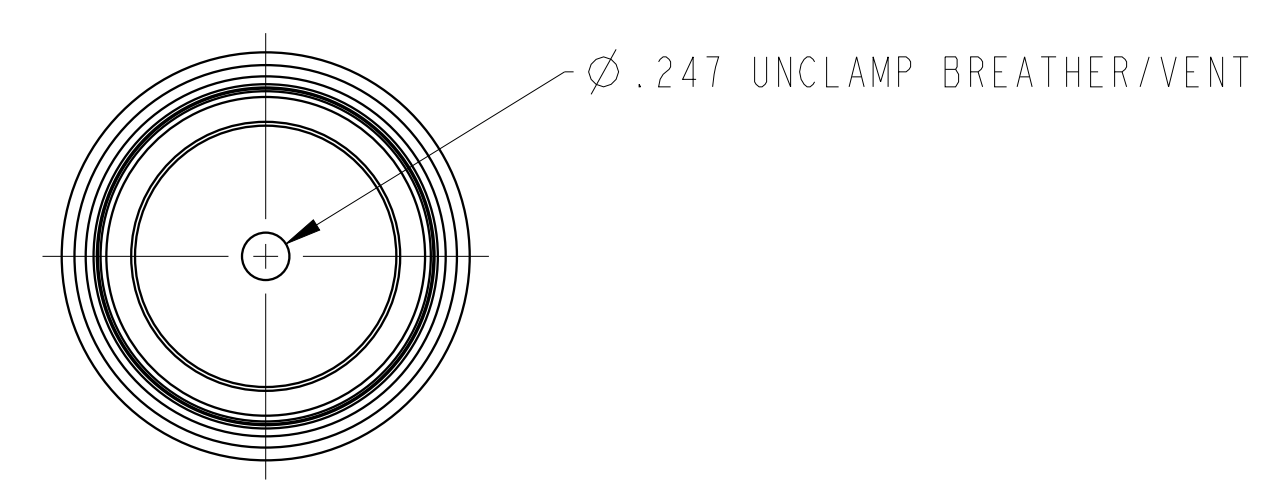
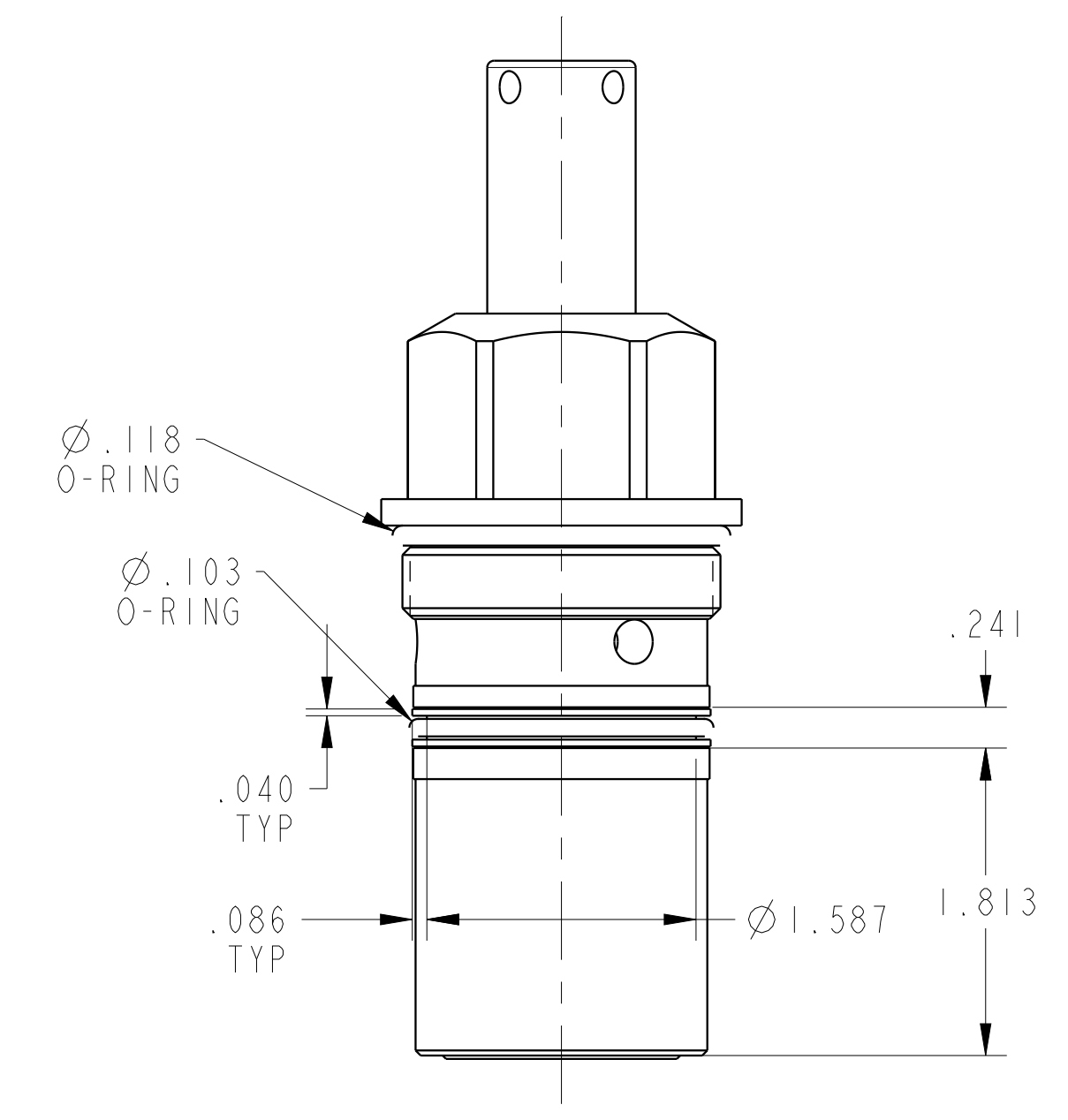
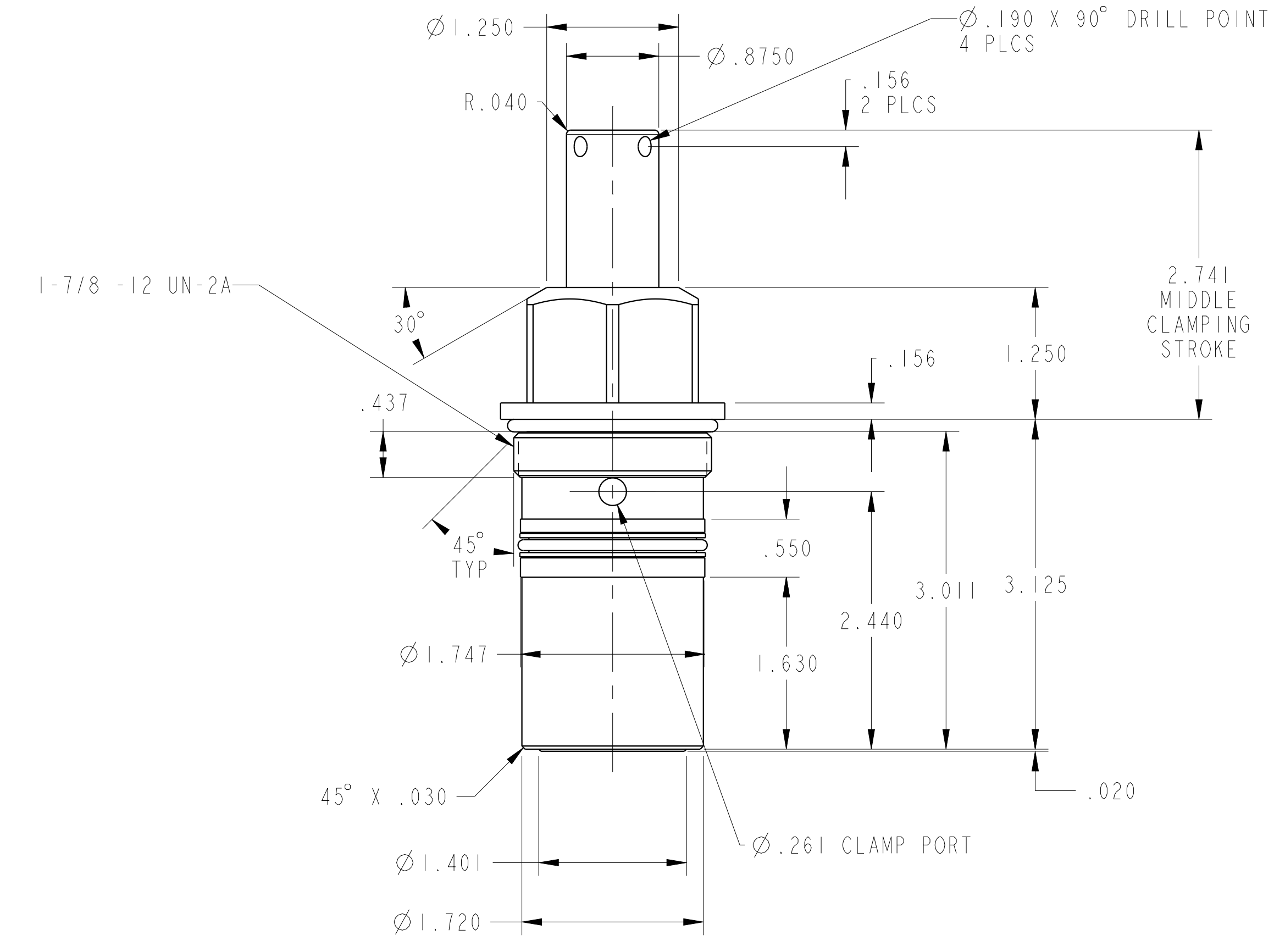

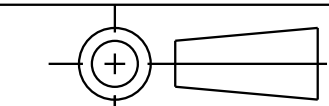


ILC15111302L REV A ECN4446



CAD CONTROL DRAWING	 VEKTEK, INC. 1334 E. SIXTH AVE. P.O. BOX 625 EMPORIA, KS. 66801 U.S.A.	
		

A	4446	RELEASED	ALS	5/17/21
REV	IN ACCORDANCE WITH ECN	EFFECTIVE DATE	REVISED BY	DATE
DRW BY:	ALS	DRAWING STATUS: Released		
DATE:	5/17/21	PRODUCTION APPROVED FOR RELEASED STATUS ONLY		

15111302L	A	SC, CM, 2600, SA, LH
REFERENCE MODEL	REF REV	
TOLERANCES DO NOT APPLY DIMENSIONS ARE NOMINAL		SIZE D
ILC15111302L		REV A