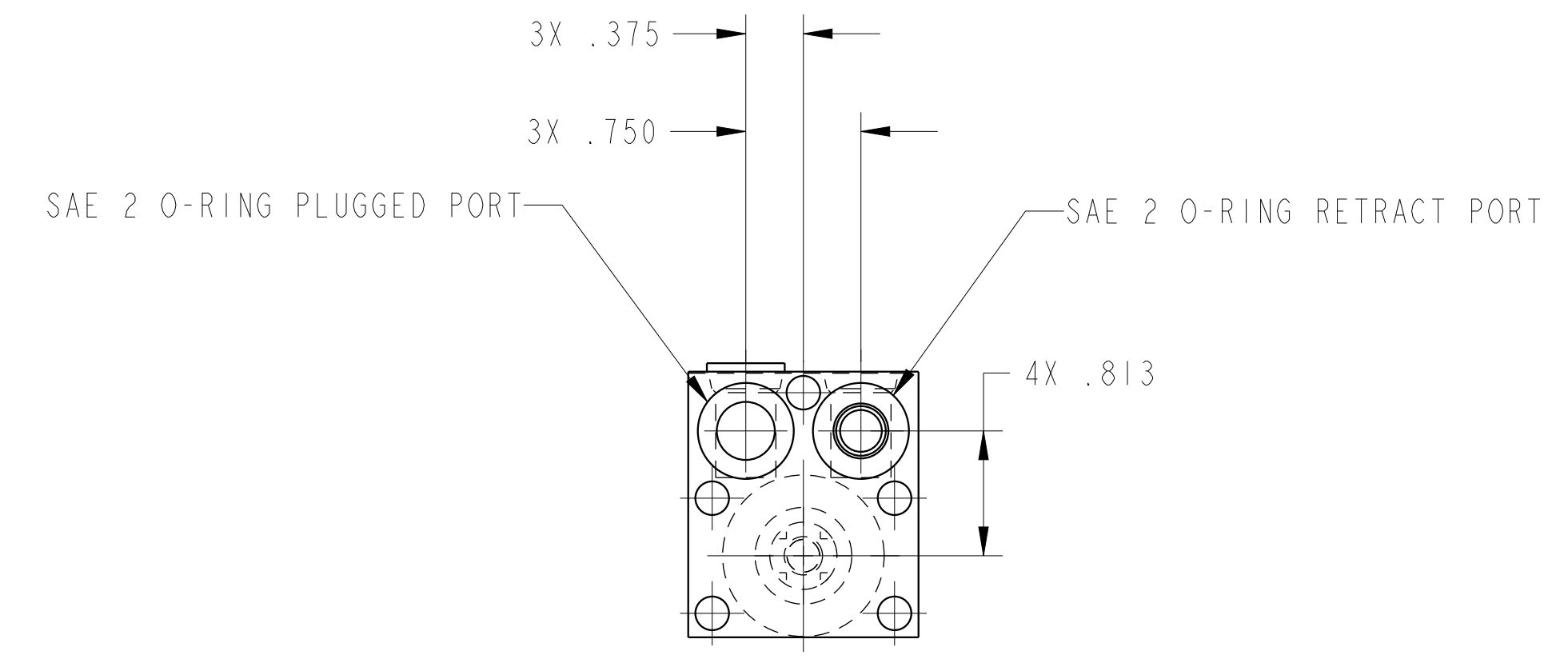
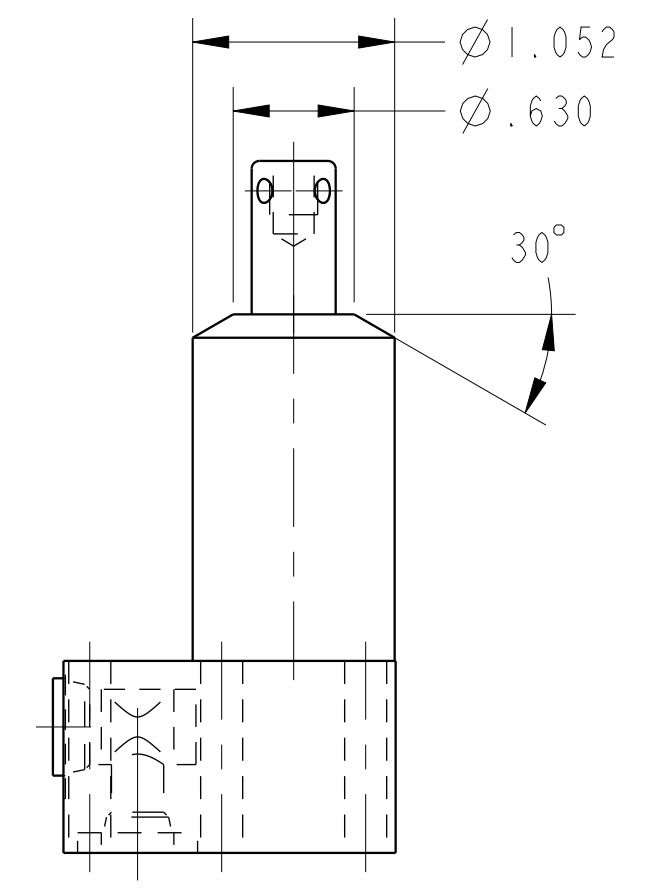
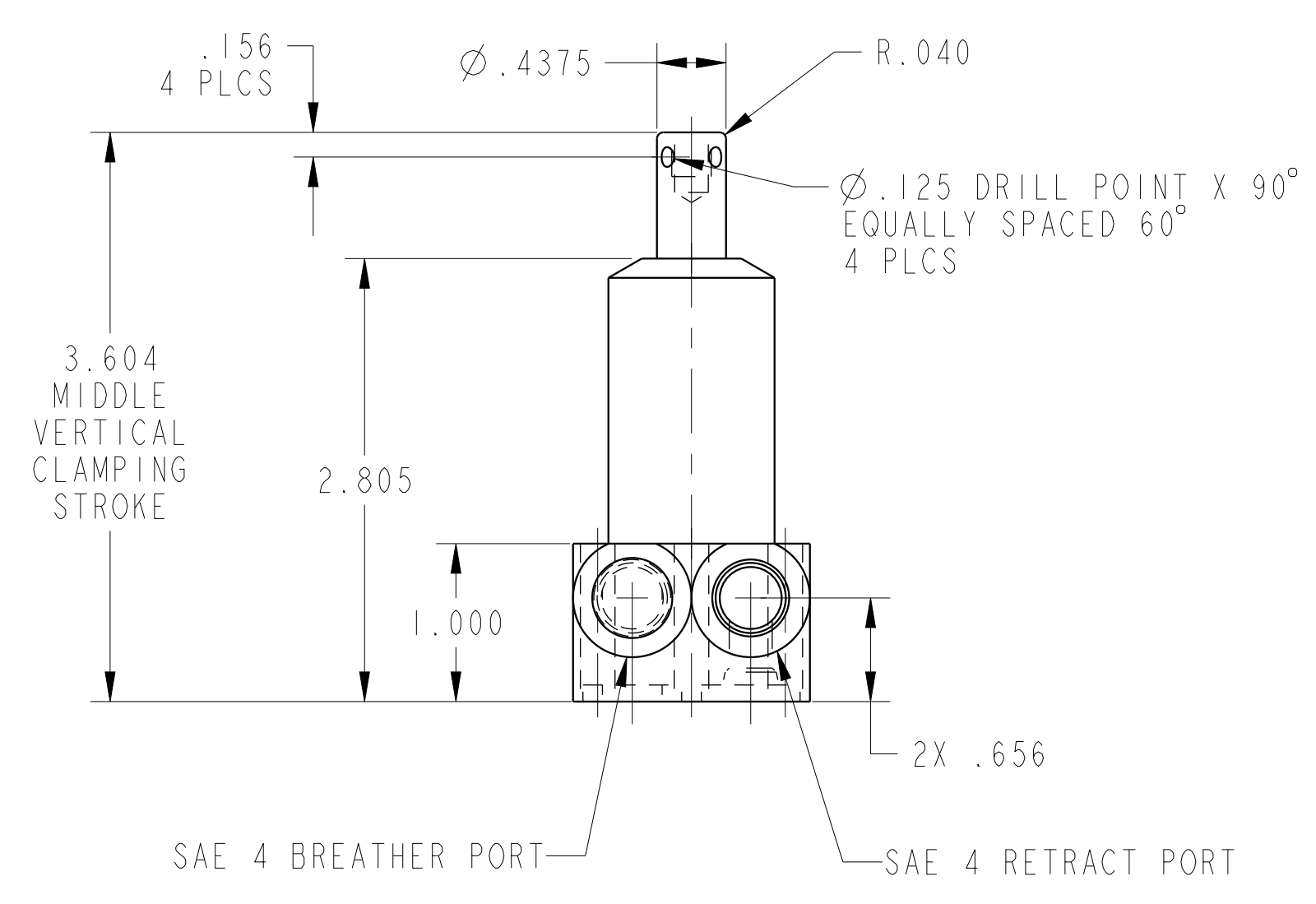

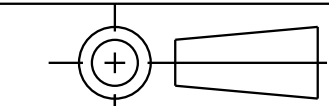


ILC15210503R REV A ECN 4609
SCALE 1.000



CAD CONTROL DRAWING	 VEKTEK, INC. 1334 E. SIXTH AVE. P.O. BOX 625 EMPORIA, KS. 66801 U.S.A.	
		

A	4609	RELEASE	RLK	1/20/22
REV	IN ACCORDANCE WITH ECN	EFFECTIVE DATE	REVISED BY	DATE
DRW BY: RLK DATE: 1/22/22		DRAWING STATUS: Released PRODUCTION APPROVED FOR RELEASED STATUS ONLY		

15210503R	A	SC, BF, 450, SA, RH
REFERENCE MODEL	REF REV	SIZE
TOLERANCES DO NOT APPLY DIMENSIONS ARE NOMINAL		D ILC15210503R REV A