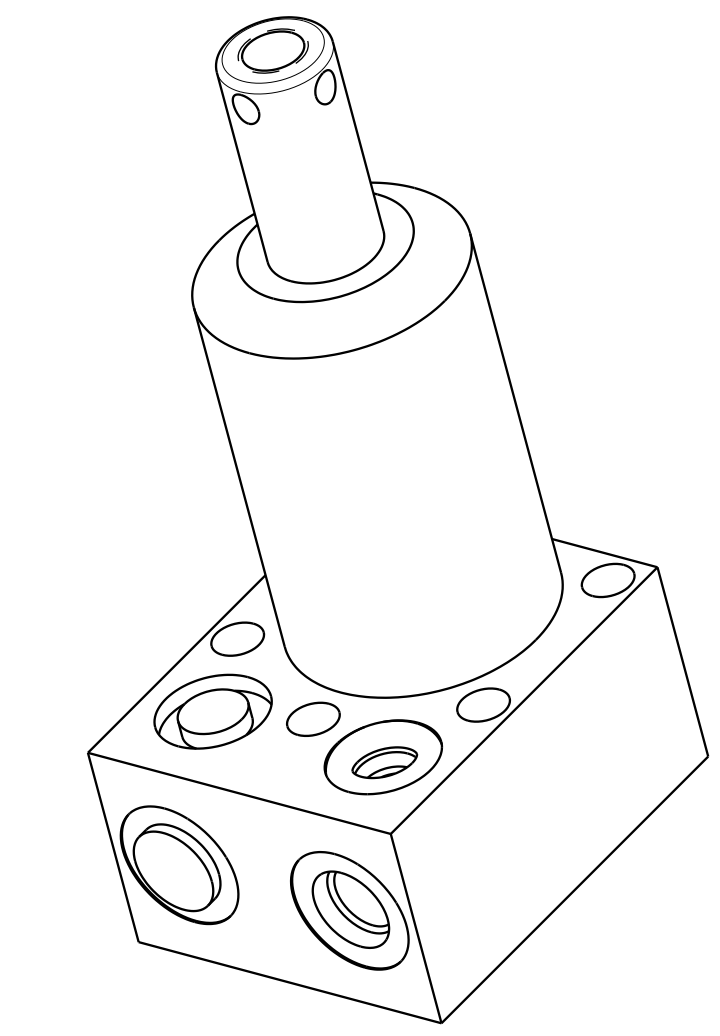
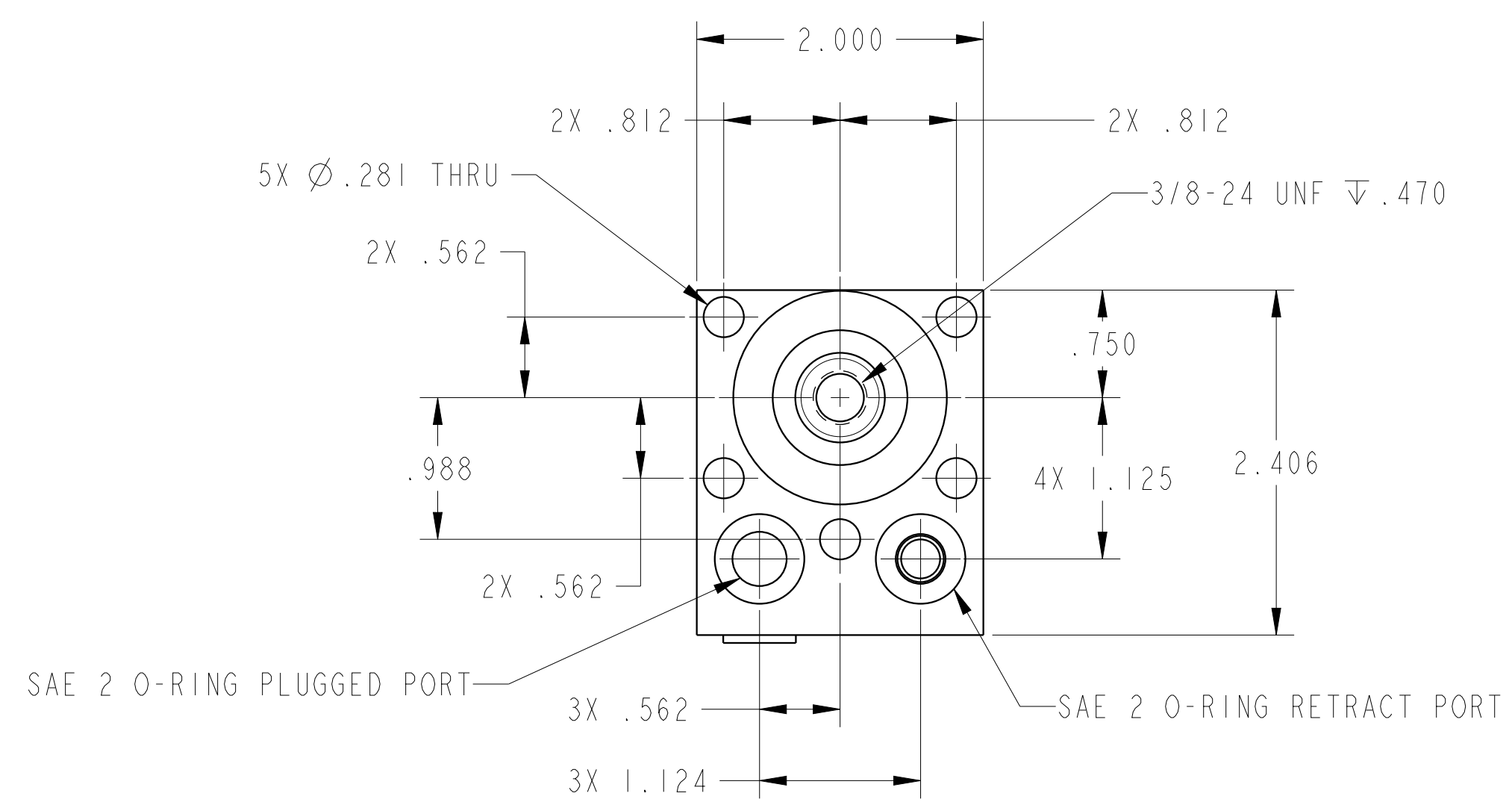


1

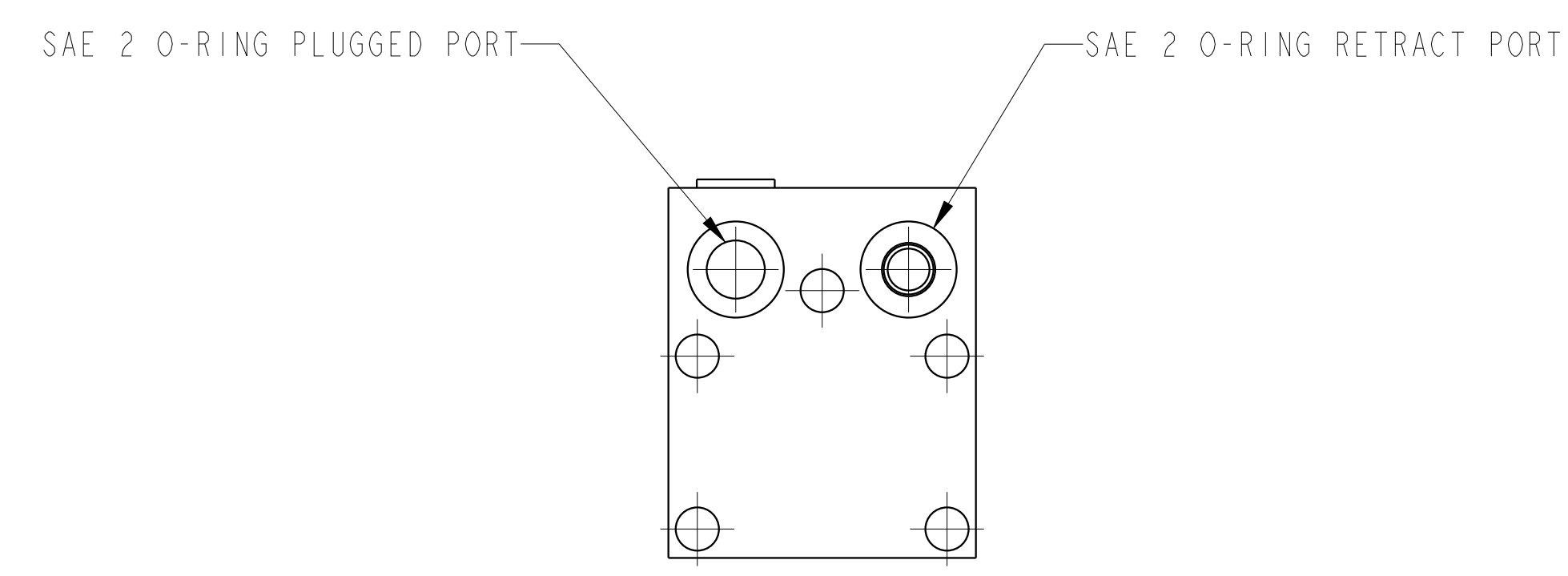
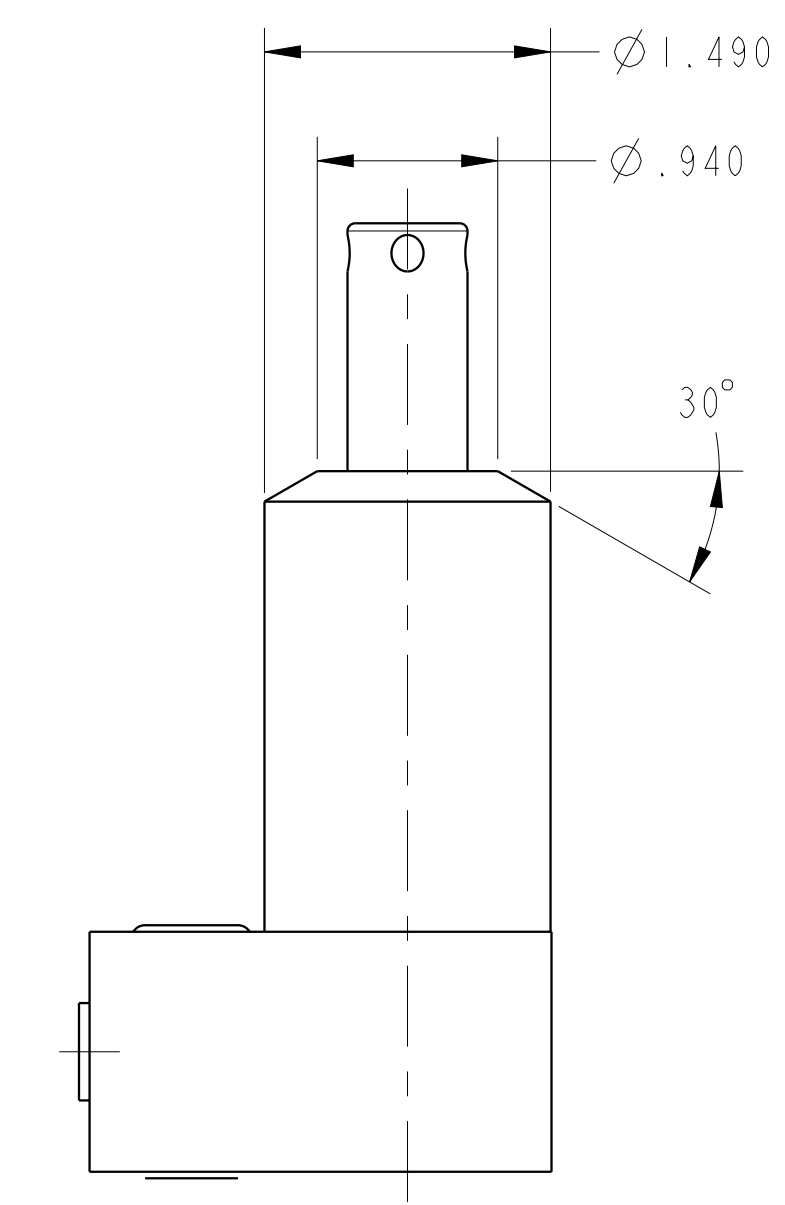
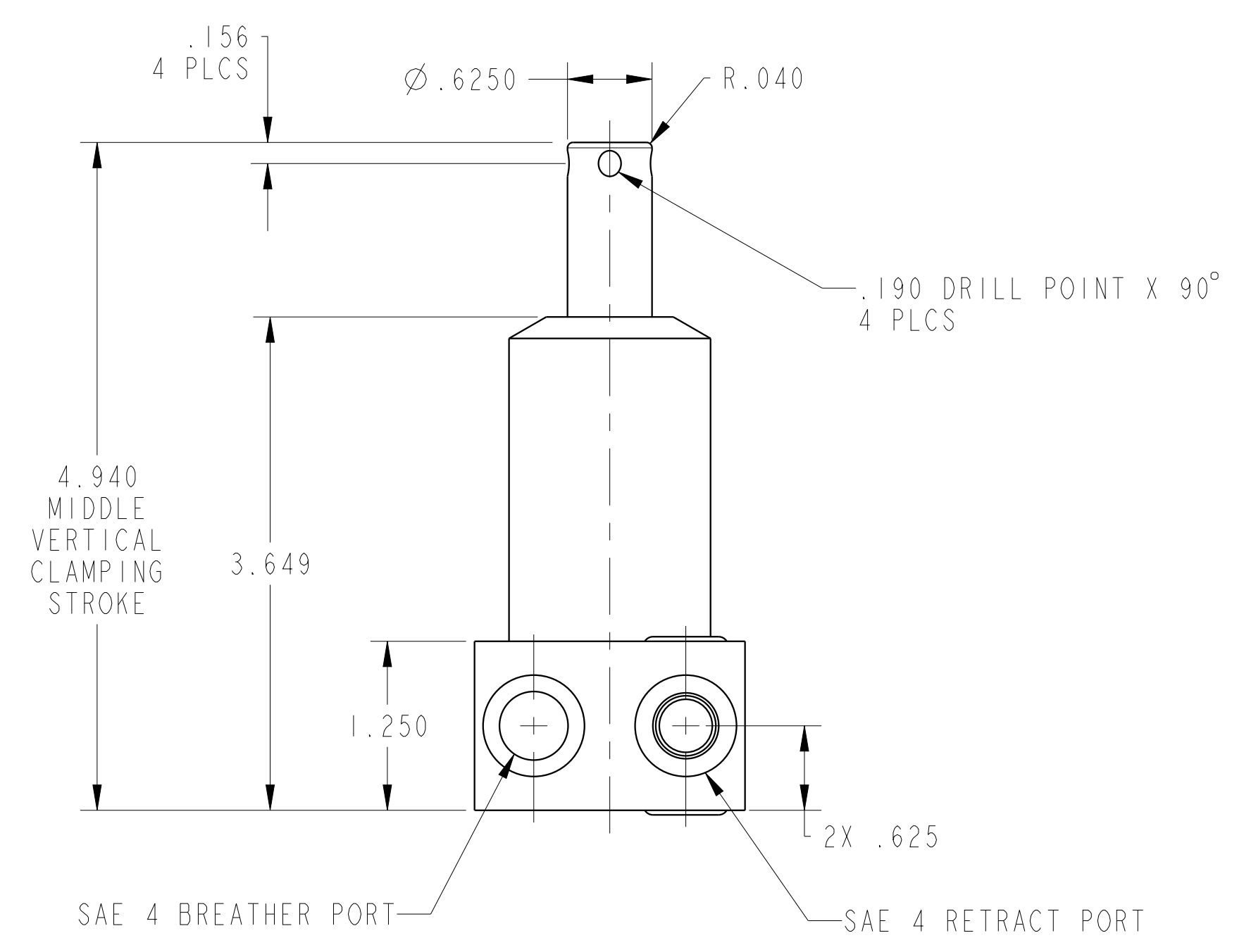
2

3

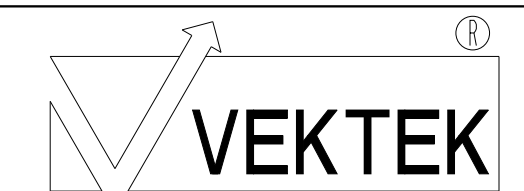
4



ILC15210904S REV A ECN4448



CAD CONTROL DRAWING



VEKTEK, INC.
1334 E. SIXTH AVE. P.O. BOX 625
EMPORIA, KS. 66801 U.S.A.

A	4448	RELEASE	ALS	5/18/21	15210904S	A	SC, BF, I100, SA, STR
REV	IN ACCORDANCE WITH ECN	EFFECTIVE DATE	REVISED BY	DATE	REFERENCE MODEL	REF REV	***
DRW BY:	ALS	DRAWING STATUS: Released			TOLERANCES DO NOT APPLY DIMENSIONS ARE NOMINAL		SIZE D
DATE:	5/19/21	PRODUCTION APPROVED FOR RELEASED STATUS ONLY			ILC15210904S		REV A