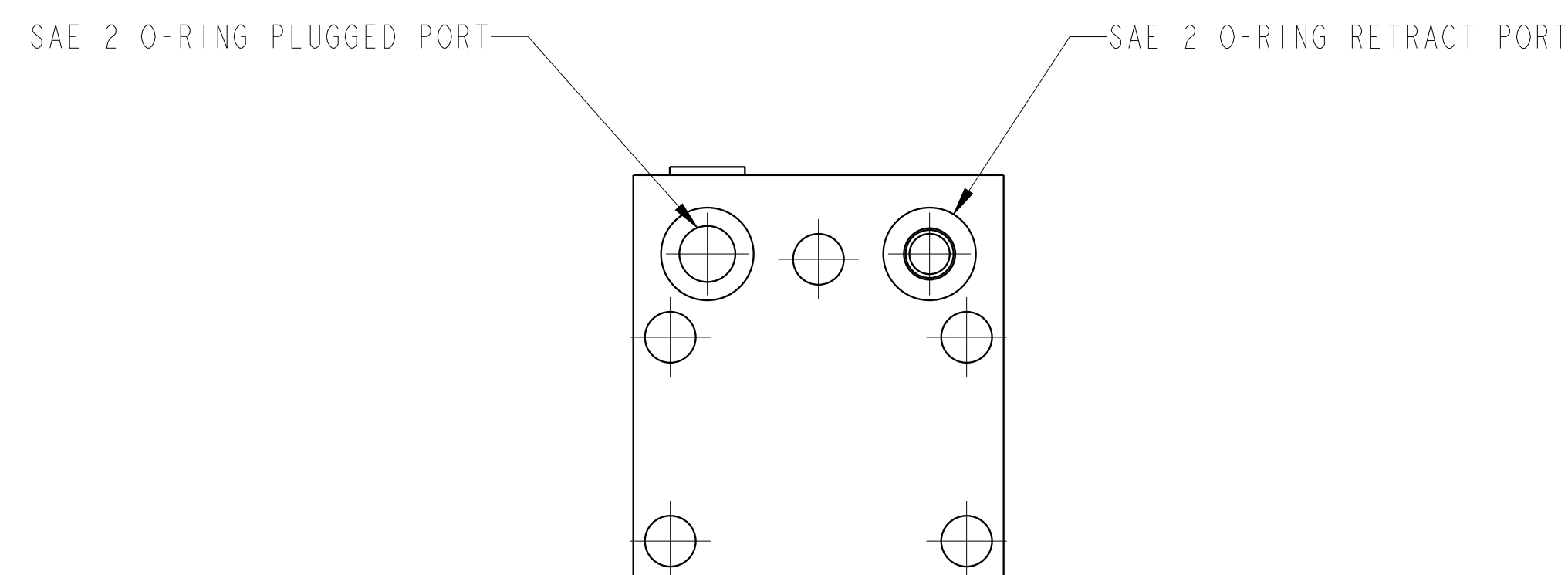
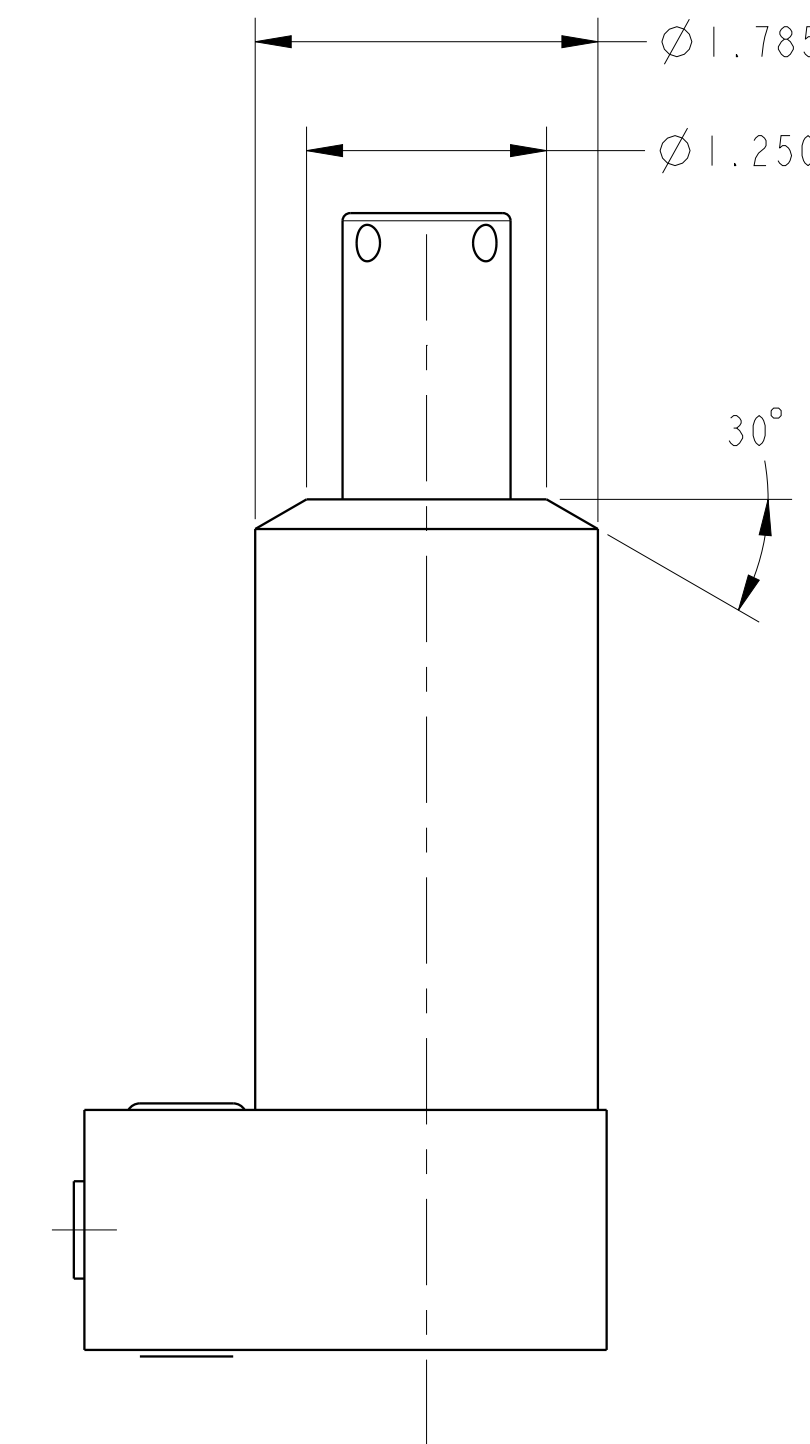
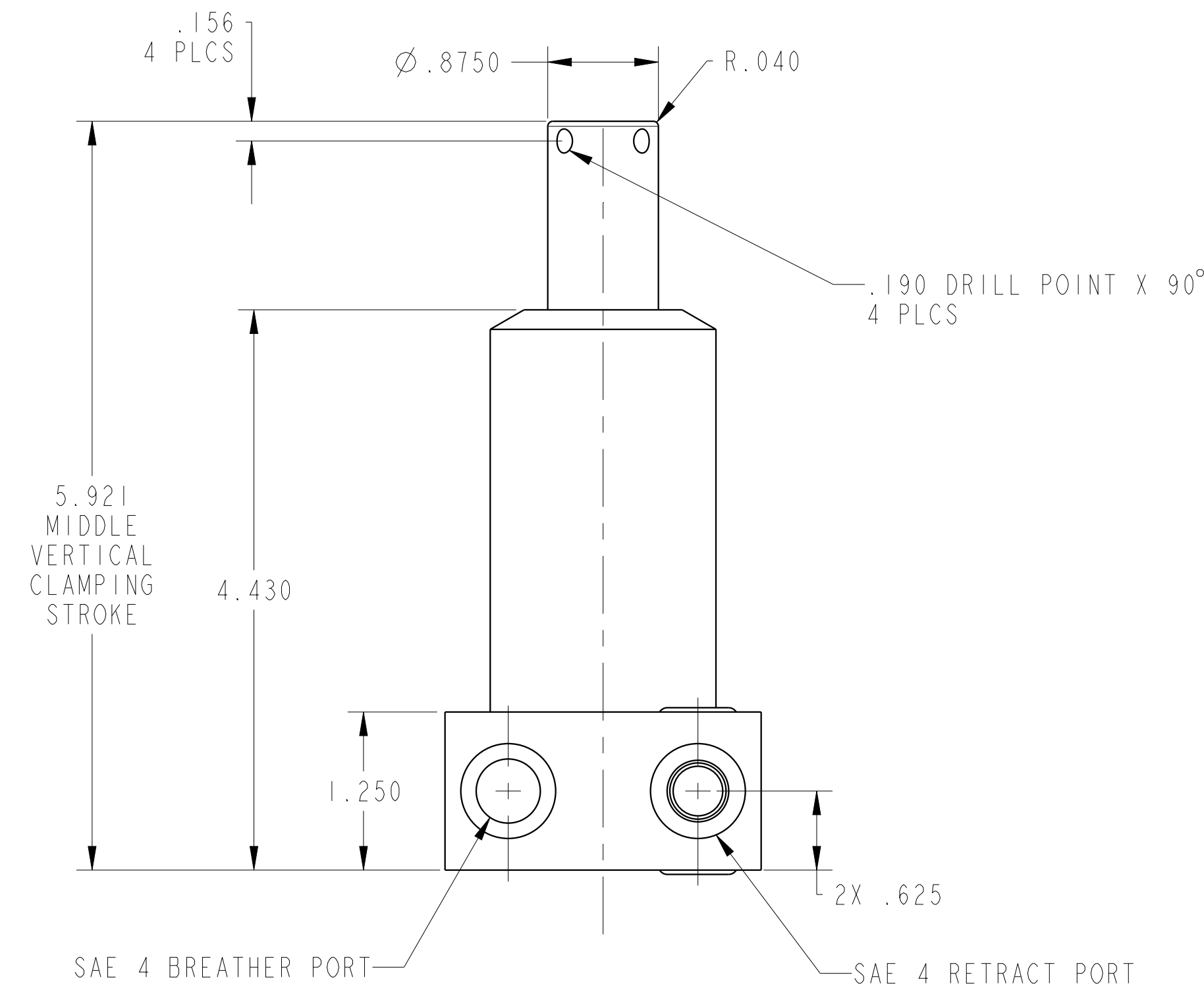
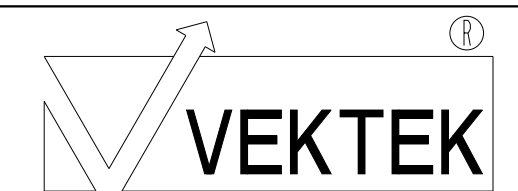


1LC15211304L REV A ECN4448



CAD CONTROL DRAWING



VEKTEK, INC.
1334 E. SIXTH AVE. P.O. BOX 625
EMPORIA, KS. 66801 U.S.A.

A	4448	RELEASE	ALS	6/15/21	15211304L	A	SC, BF, 2600, SA, LH
REV	IN ACCORDANCE WITH ECN	EFFECTIVE DATE	REVISED BY	DATE	REFERENCE MODEL	REF REV	***
DRW BY:	ALS	DRAWING STATUS: Released			TOLERANCES DO NOT APPLY DIMENSIONS ARE NOMINAL		SIZE D
DATE:	5/19/21	PRODUCTION APPROVED FOR RELEASED STATUS ONLY			FORM FEG036, Rev. B		1LC15211304L REV A