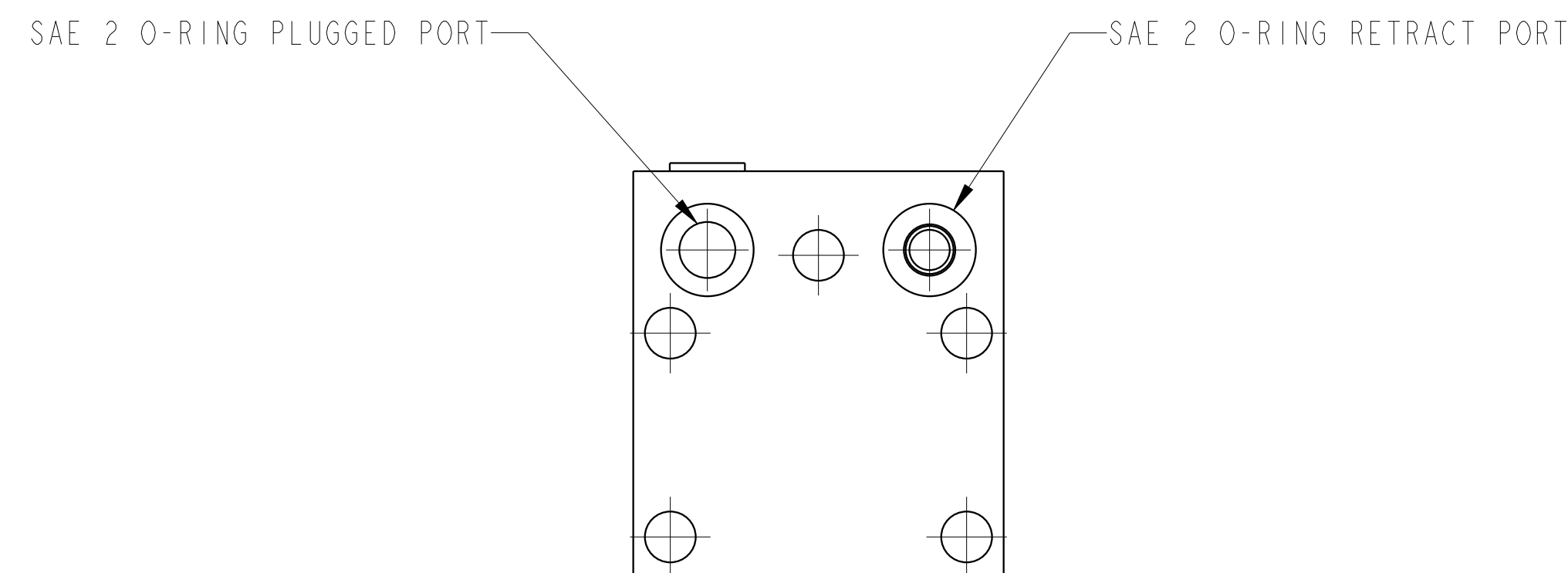
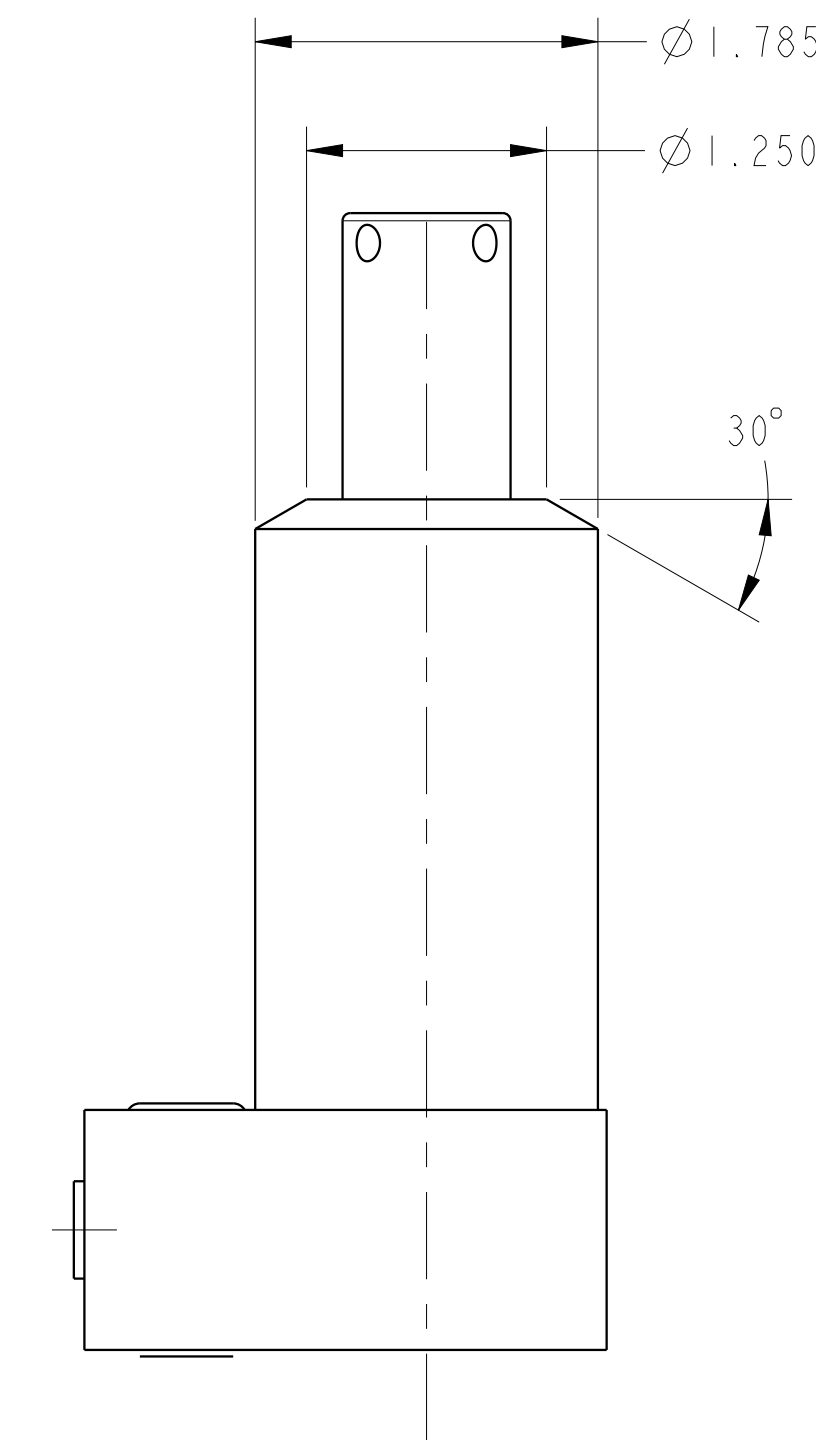
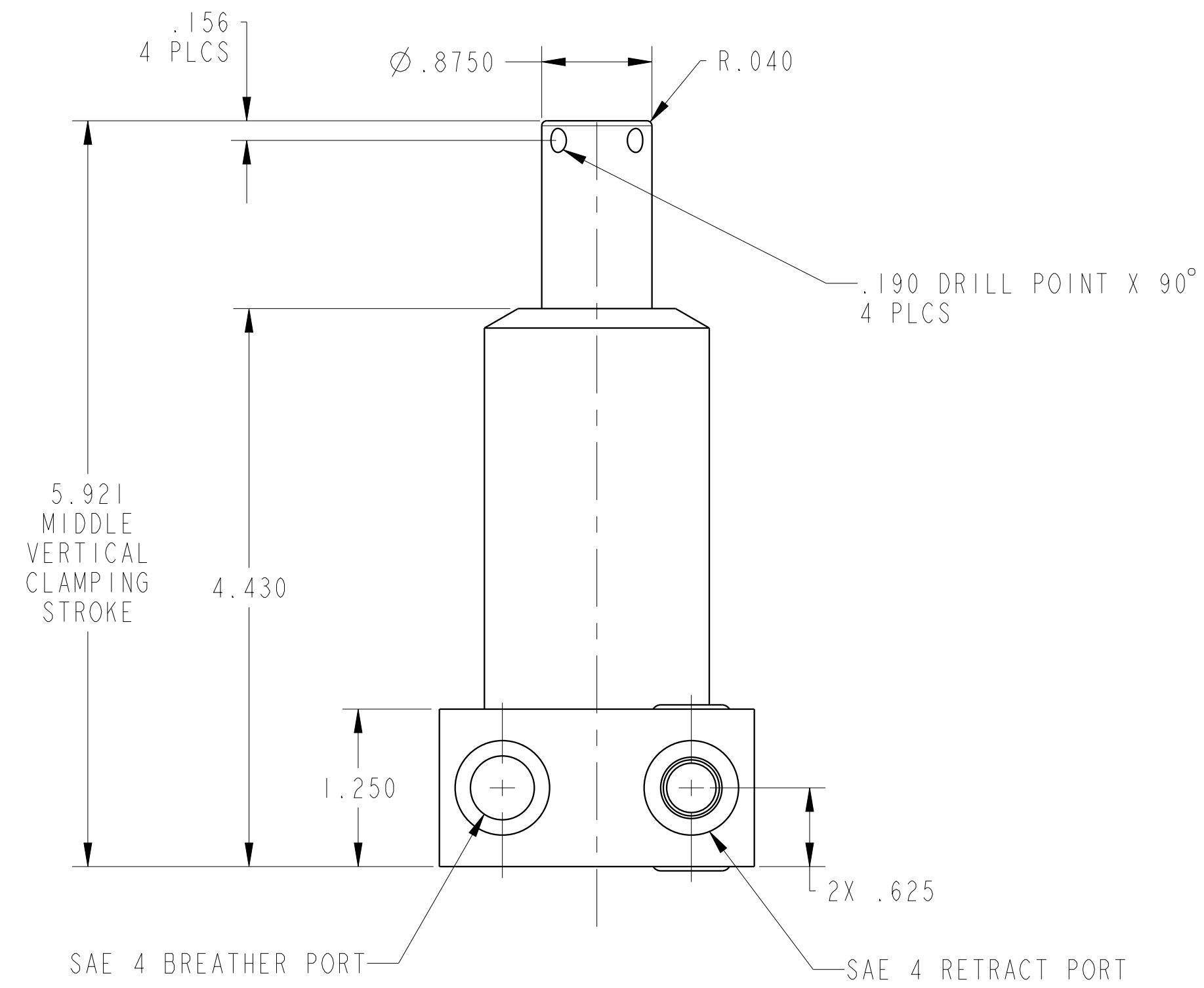
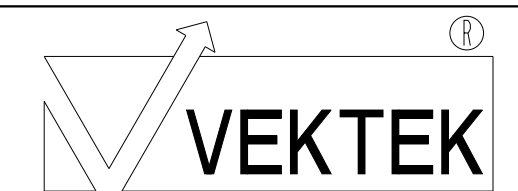


1LC15211304R REV A ECN4448



CAD CONTROL DRAWING



VEKTEK, INC.
1334 E. SIXTH AVE. P.O. BOX 625
EMPORIA, KS. 66801 U.S.A.

A	4448	RELEASE	ALS	6/15/21	15211304R	A	SC, BF, 2600, SA, RH
REV	IN ACCORDANCE WITH ECN	EFFECTIVE DATE	REVISED BY	DATE	REFERENCE MODEL	REF REV	***
DRW BY:	ALS	DRAWING STATUS: Released			TOLERANCES DO NOT APPLY		SIZE
DATE:	5/19/21	PRODUCTION APPROVED FOR RELEASED STATUS ONLY			DIMENSIONS ARE NOMINAL		D
					1LC15211304R		REV A