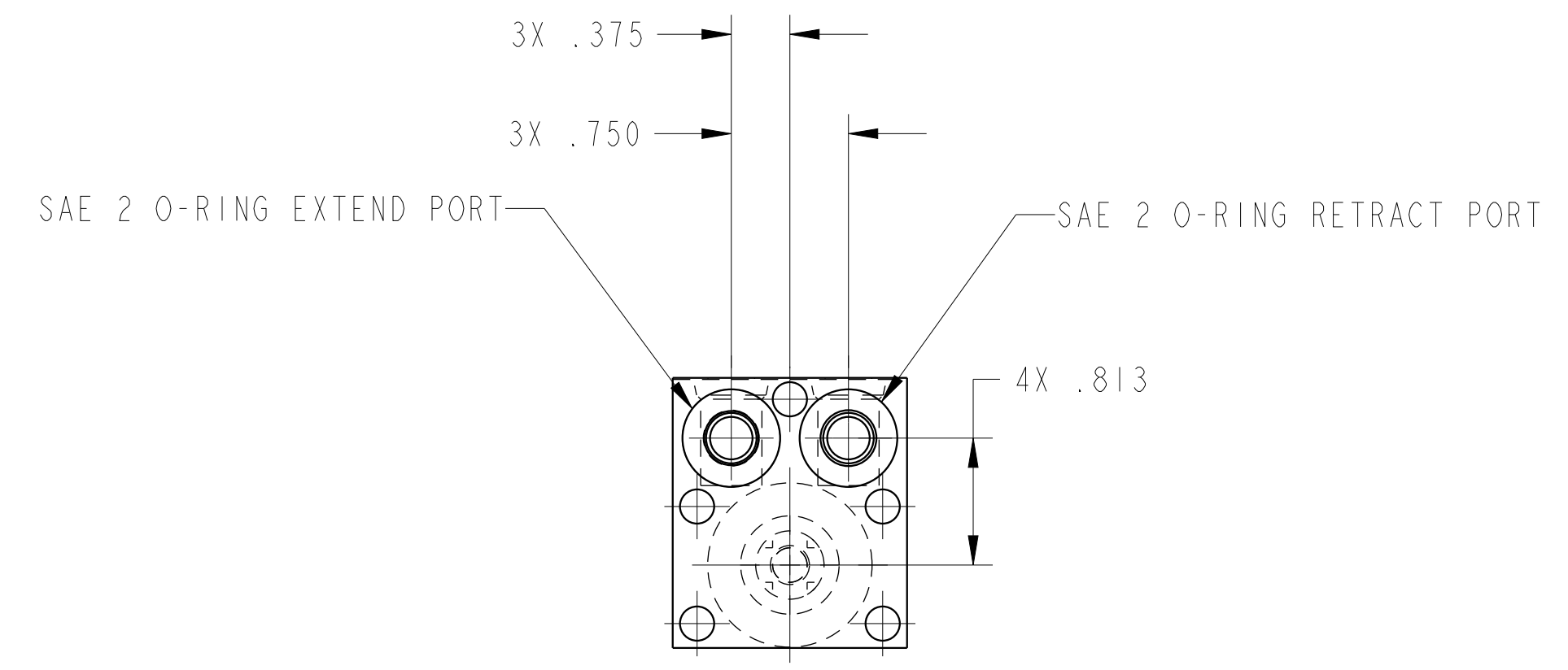
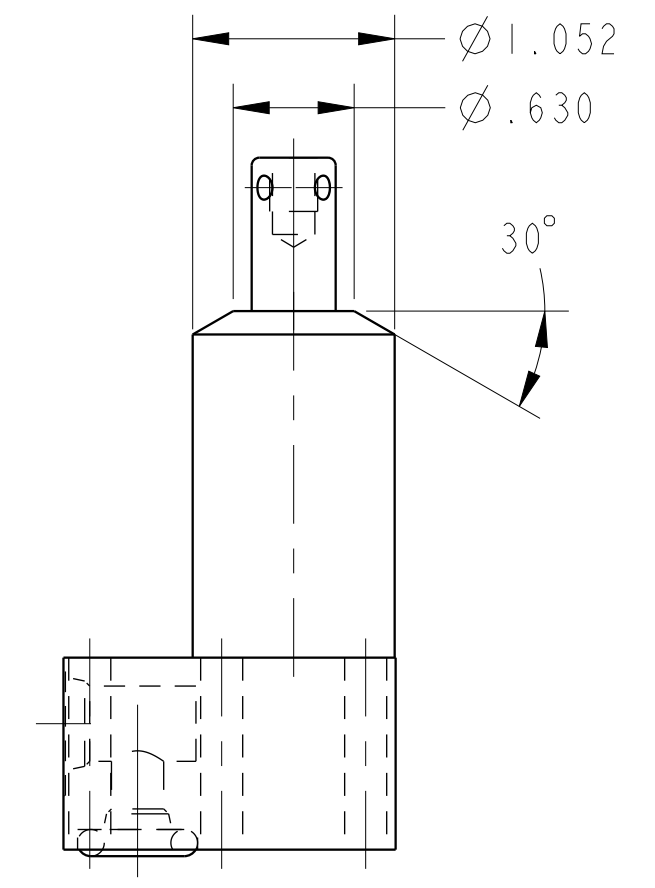
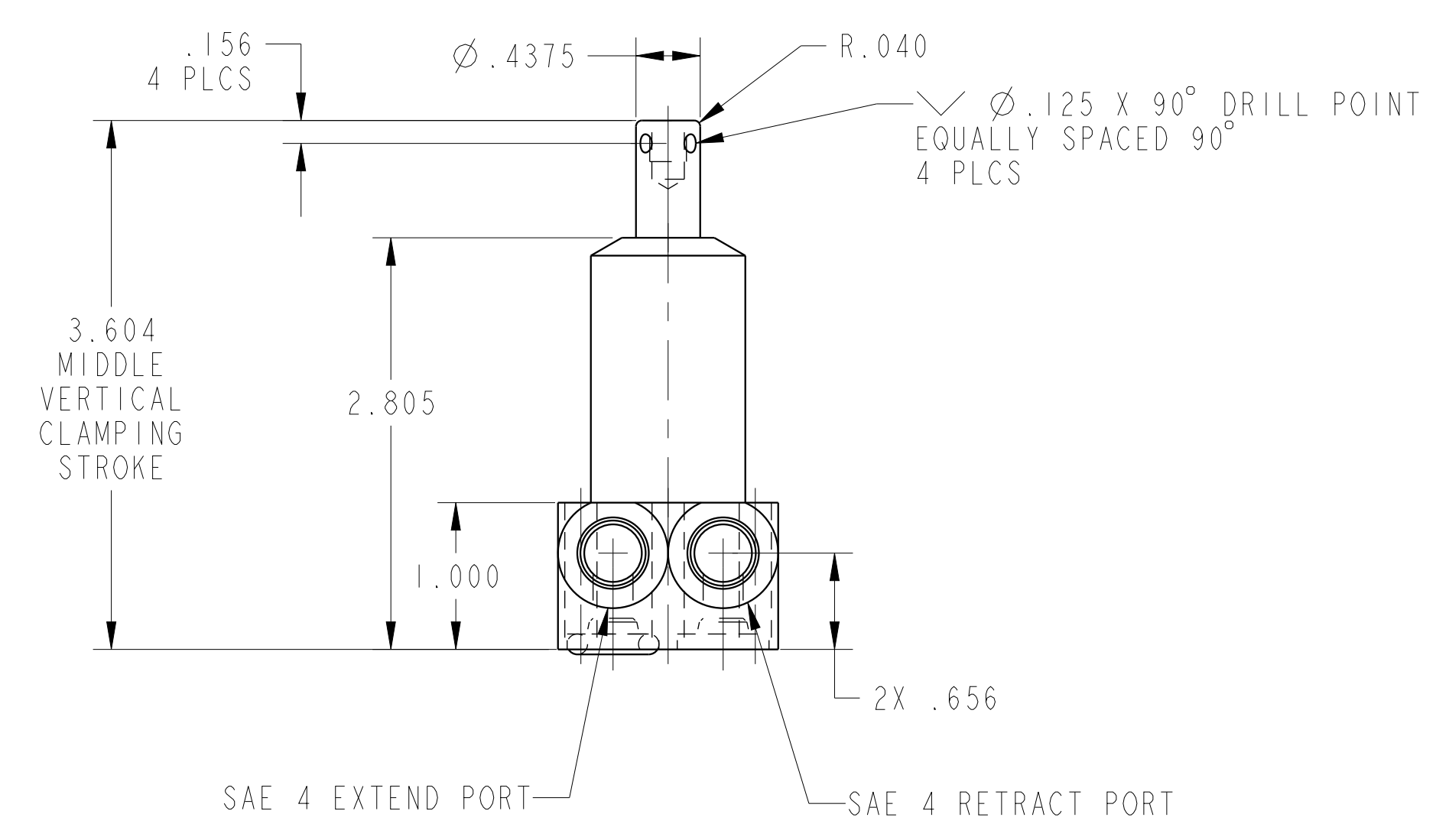

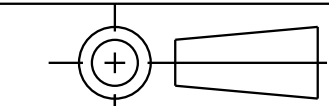


ILC15220503L REV B ECN 5049
SCALE 1.000



CAD CONTROL DRAWING	 VEKTEK, INC. 1334 E. SIXTH AVE. P.O. BOX 625 EMPORIA, KS. 66801 U.S.A.	
		

B	5049	RELEASE	JDW	03/06/23	15220503L	A	SC, BF, 450, DA, LH
REV	IN ACCORDANCE WITH ECN	EFFECTIVE DATE	REVISED BY	DATE	REFERENCE MODEL	REF REV	---
DRW BY:	RLK	DRAWING STATUS: Released			TOLERANCES DO NOT APPLY DIMENSIONS ARE NOMINAL		SIZE D
DATE:	2/20/22	PRODUCTION APPROVED FOR RELEASED STATUS ONLY			ILC15220503L		REV B