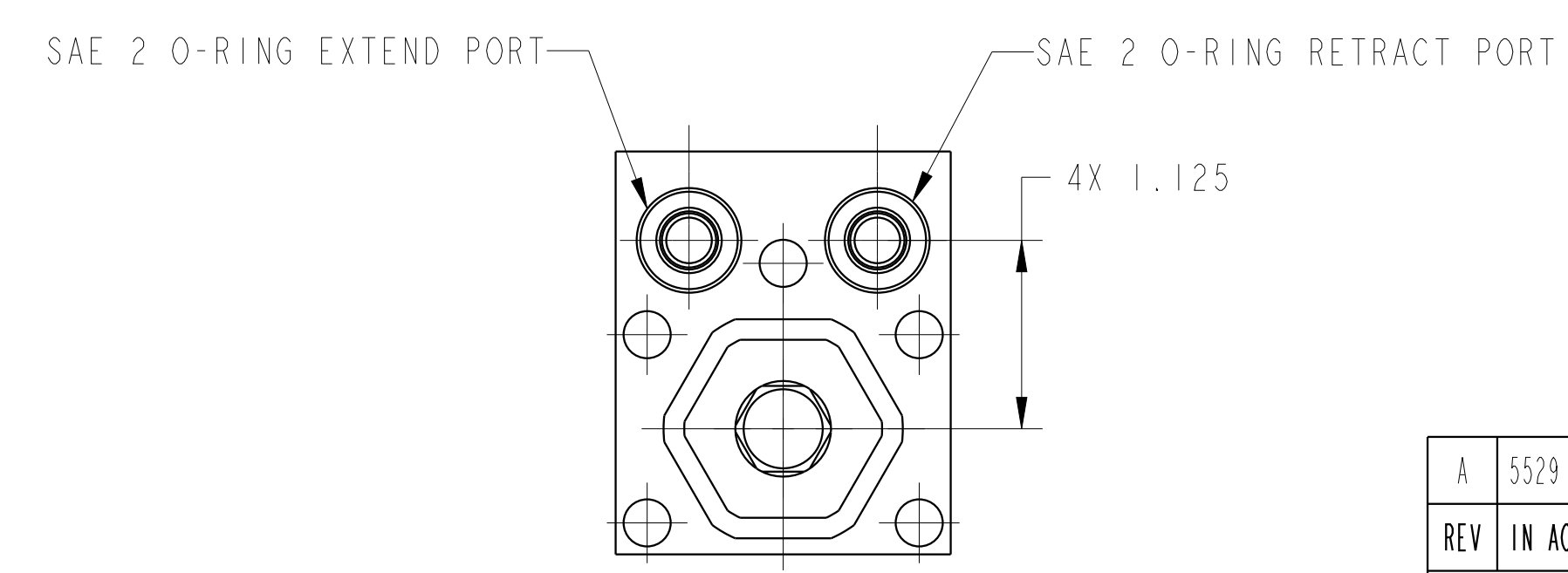
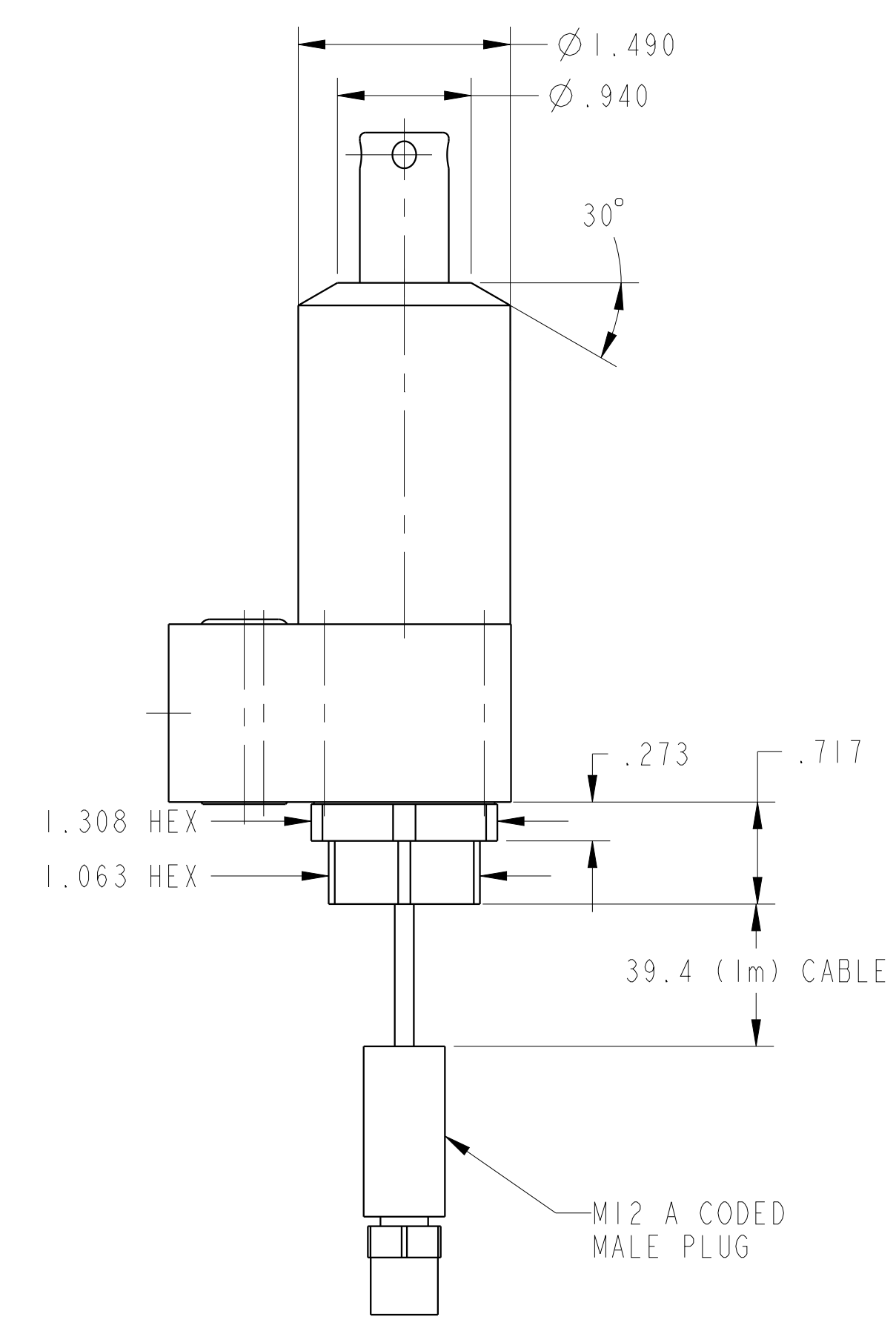
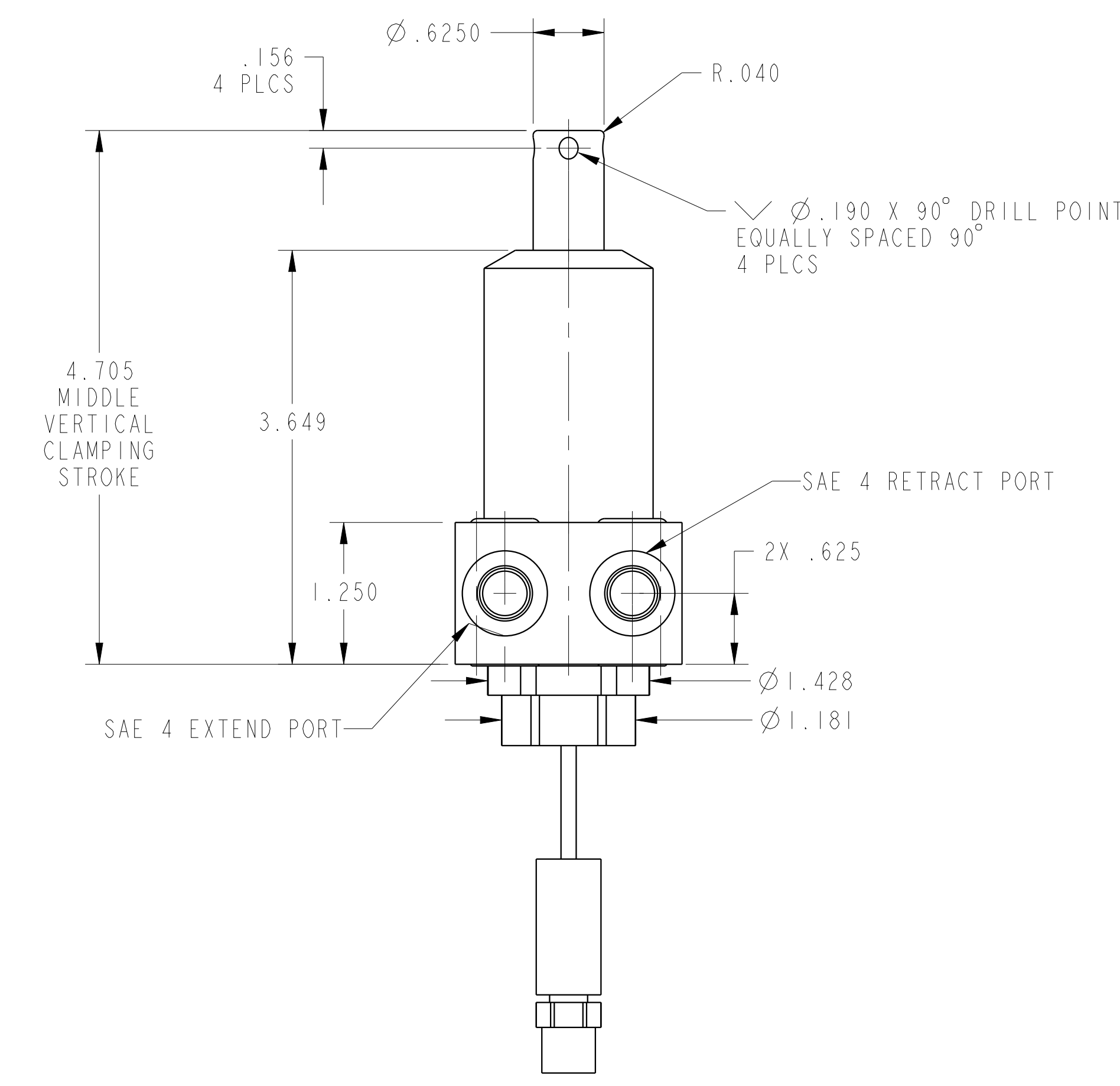


ILC15220904LUS REV A ECN 5529



CAD CONTROL DRAWING		
	VEKTEK, INC. 1334 E. SIXTH AVE. P.O. BOX 625 EMPORIA, KS. 66801 U.S.A.	

A	5529	RELEASE	ALS	3/18/25	15220904LUS	A	SC, BF, DA, VC, LH, 1100, US
REV	IN ACCORDANCE WITH ECN	EFFECTIVE DATE	REVISED BY	DATE	REFERENCE MODEL	REF REV	
DRW BY:	ALS	DRAWING STATUS: <b>Released</b>			TOLERANCES DO NOT APPLY DIMENSIONS ARE NOMINAL		SIZE D
DATE:	10/22/24	PRODUCTION APPROVED FOR RELEASED STATUS ONLY					ILC15220904LUS REV A