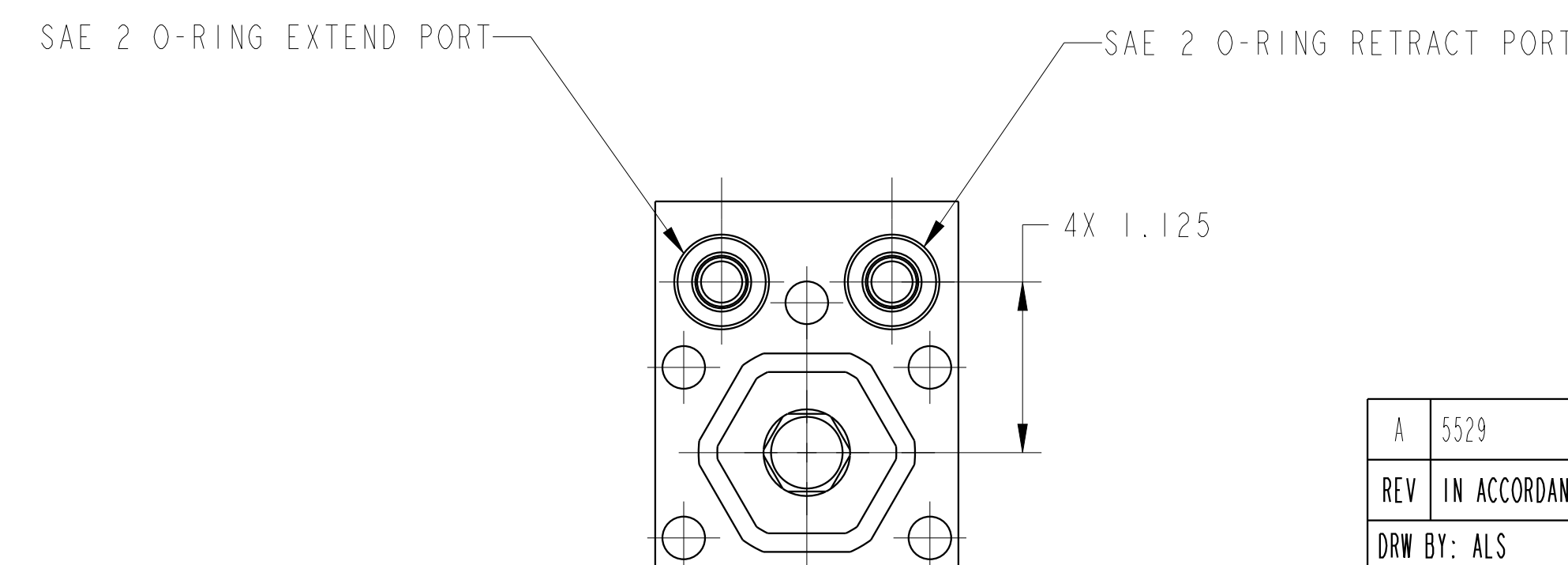
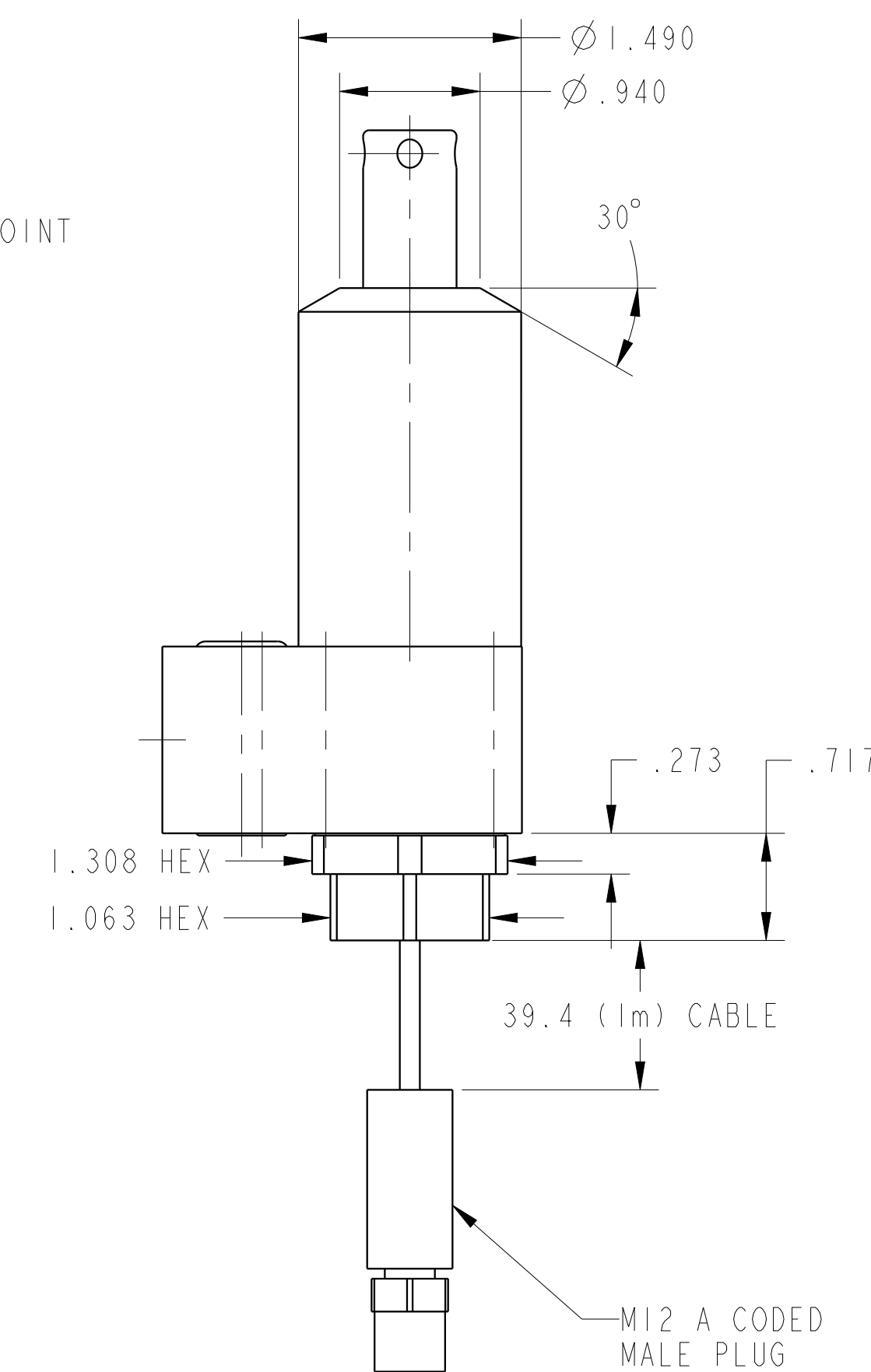
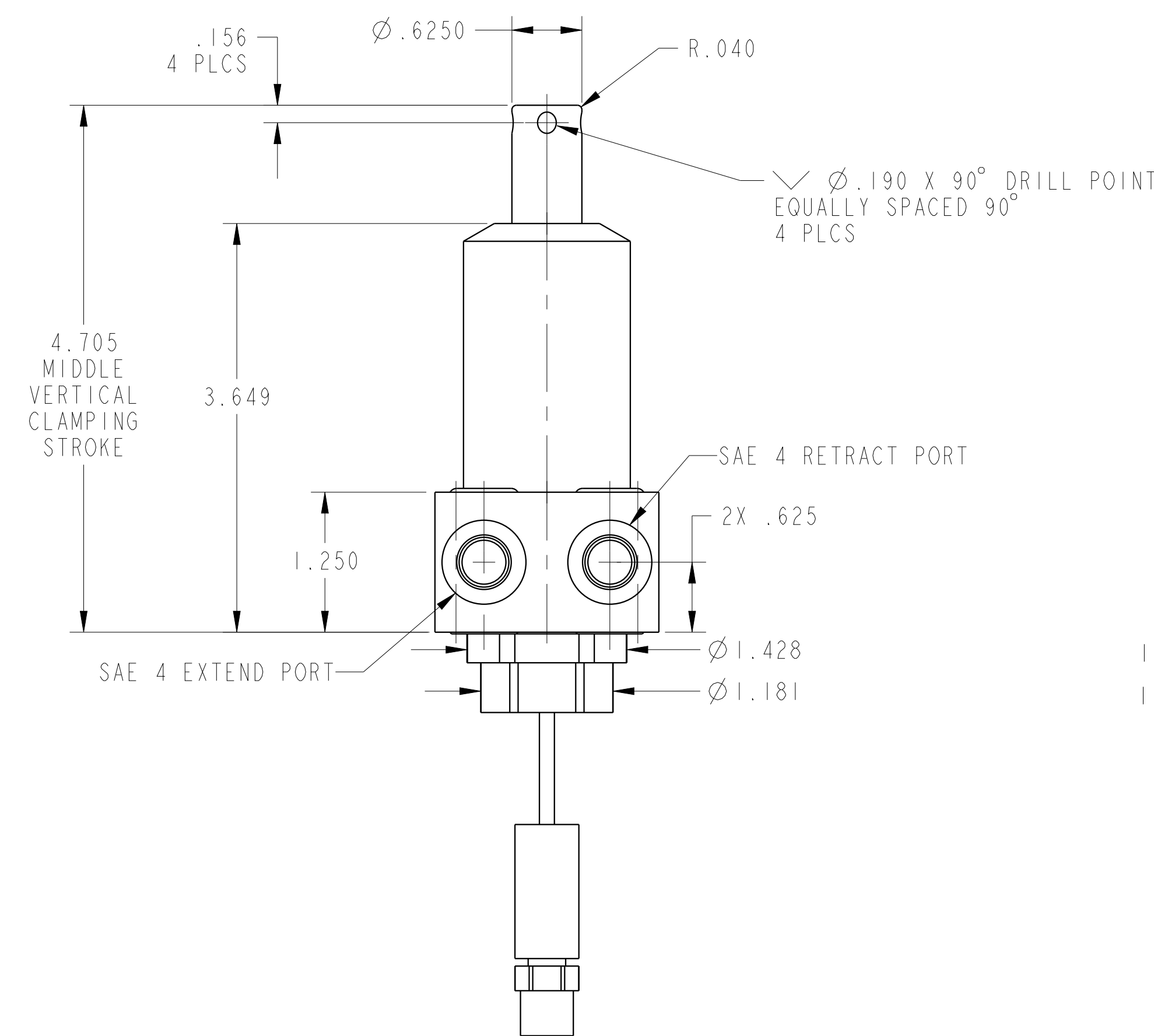
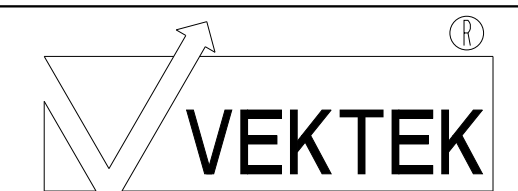


ILC15220904RUS REV A ECN 5529



CAD CONTROL
DRAWING



VEKTEK, INC.
1334 E. SIXTH AVE. P.O. BOX 625
EMPORIA, KS. 66801 U.S.A.

| | | | | | | | |
|---------|------------------------|--|------------|---------|---|---------|------------------------------|
| A | 5529 | RELEASE | ALS | 3/18/25 | 15220904RUS | A | SC, BF, DA, HS, RH, 1100, US |
| REV | IN ACCORDANCE WITH ECN | EFFECTIVE DATE | REVISED BY | DATE | REFERENCE MODEL | REF REV | |
| DRW BY: | ALS | DRAWING STATUS: Released | | | TOLERANCES DO NOT APPLY DIMENSIONS ARE NOMINAL | | SIZE D |
| DATE: | 10/22/24 | PRODUCTION APPROVED FOR RELEASED STATUS ONLY | | | ILC15220904RUS | REV A | |