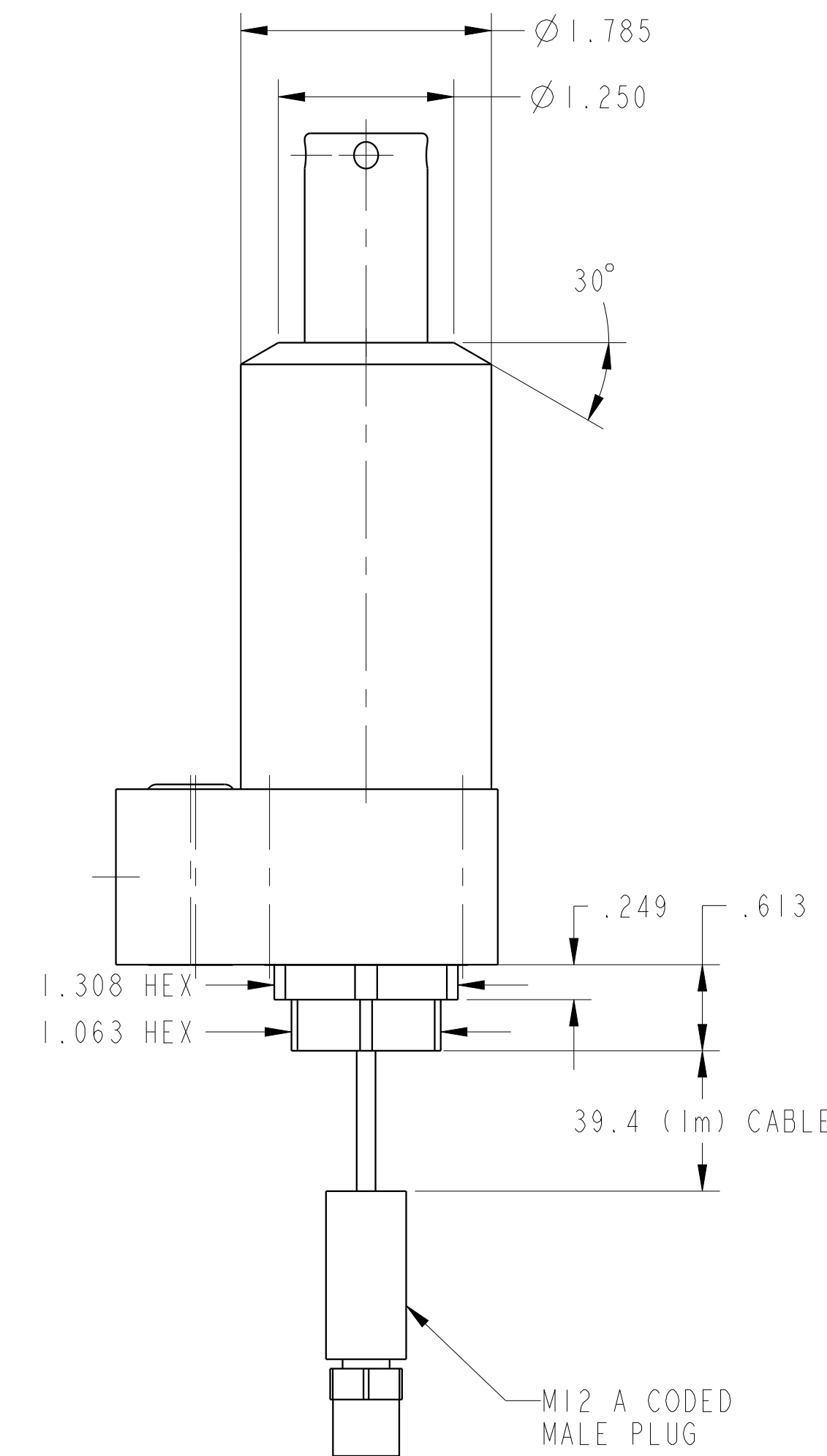
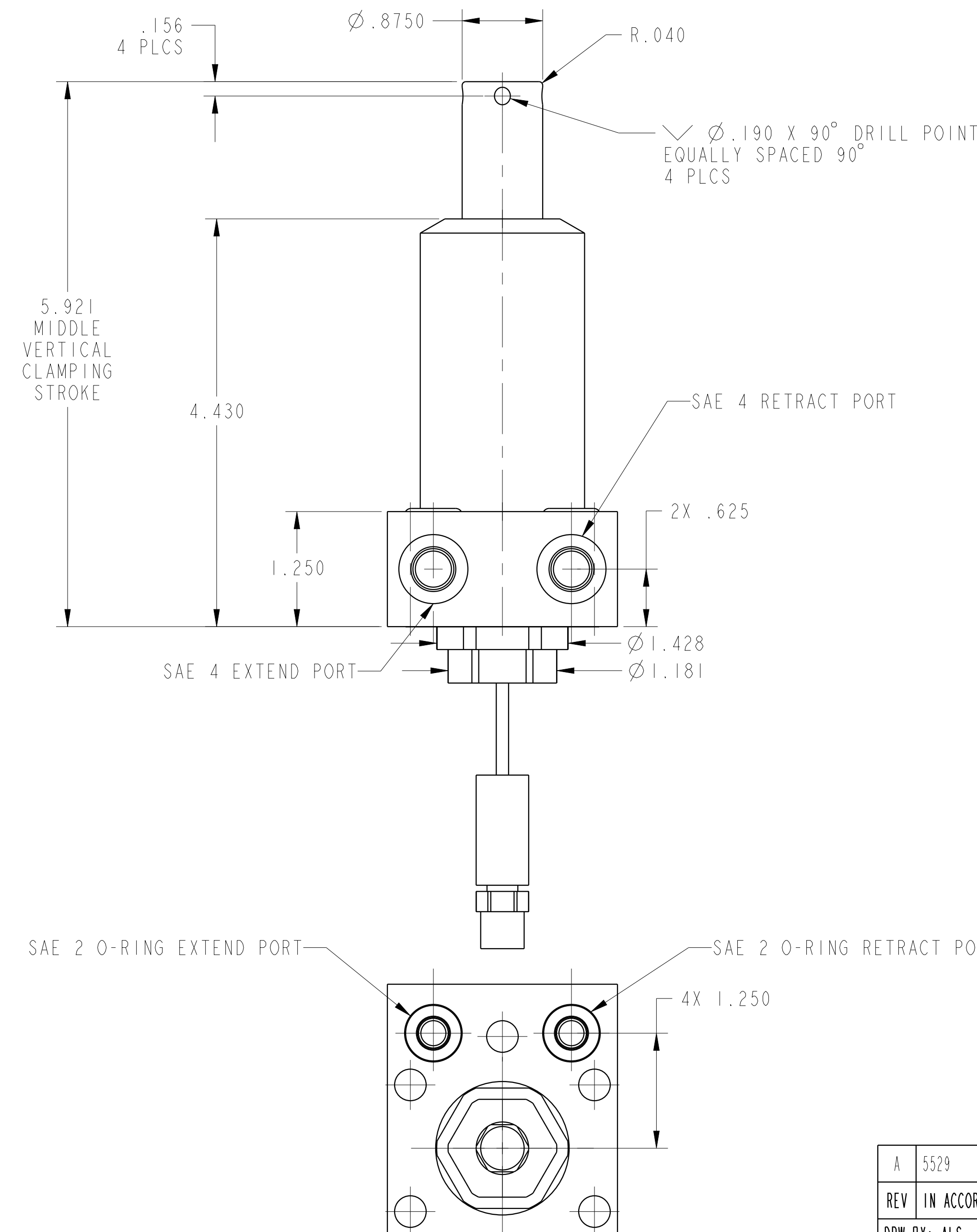
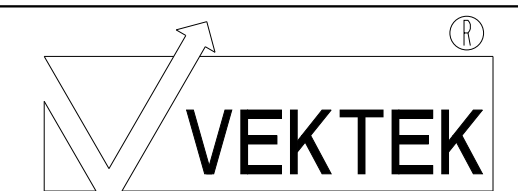


ILC15221304LUS REV A ECN 5529



CAD CONTROL DRAWING



VEKTEK, INC.
1334 E. SIXTH AVE. P.O. BOX 625
EMPORIA, KS. 66801 U.S.A.

A	5529	RELEASE	ALS	3/18/25	15221304LUS	A	SC, BF, DA, VC, LH, 2600, US
REV	IN ACCORDANCE WITH ECN	EFFECTIVE DATE	REVISED BY	DATE	REFERENCE MODEL	REF REV	
DRW BY:	ALS	DRAWING STATUS: Released			TOLERANCES DO NOT APPLY DIMENSIONS ARE NOMINAL		SIZE D
DATE:	10/22/24	PRODUCTION APPROVED FOR RELEASED STATUS ONLY			FORM FEG036, Rev. B		REV A