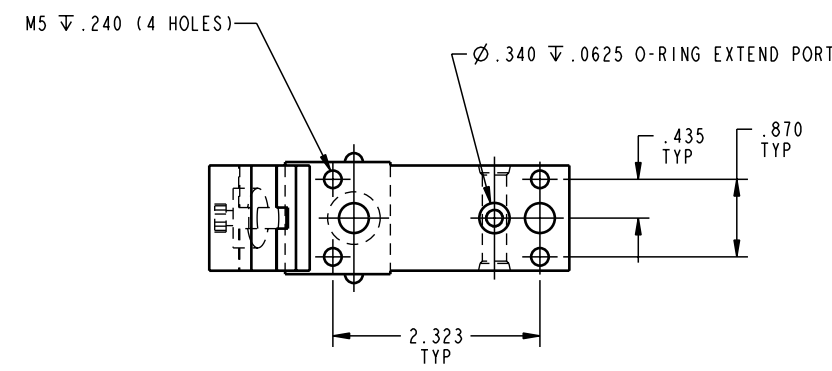
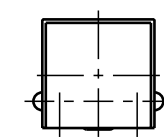
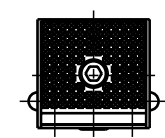
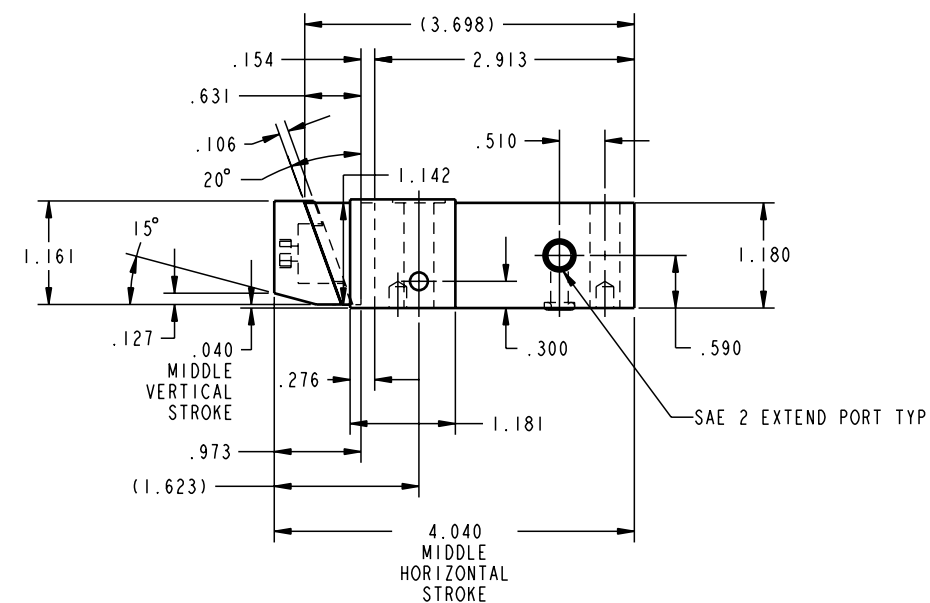


ILC15310500 REV B ECN 649



CAD CONTROL DRAWING		 VEKTEK, INC. 1334 E. SIXTH AVE. P.O. BOX 625 EMPORIA, KS. 66801 U.S.A.	
B 649	RELEASE	K. ROEMER	04-14-05
REV	IN ACCORDANCE WITH ECN	EFFECTIVE DATE	REVISED BY
DATE: 08-27-02	DRW BY: K. ROEMER	DRAWING STATUS: Released	
TOLERANCES DO NOT APPLY		SIZE	REV
DIMENSIONS ARE NOMINAL		D ILC15310500	B
FORM FEG036, Rev. A			

15310500	E	CLAMP, PL-DN, MM, SA, SRJ, 290
REFERENCE MODEL	REF REV	
SHEET 1 OF 1		