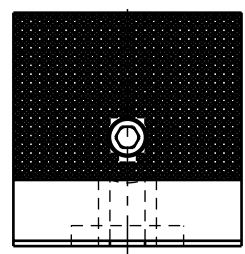



ILC15311202 REV B ECN 649



CAD CONTROL DRAWING				 VEKTEK, INC. 1334 E. SIXTH AVE. P.O. BOX 625 EMPORIA, KS. 66801 U.S.A.	
B	649	RELEASE	K. ROEMER	04-14-05	15311202
REV	IN ACCORDANCE WITH ECN	EFFECTIVE DATE	REVISED BY	DATE	REFERENCE MODEL
DRW BY:	KR	DRAWING STATUS: Released			TOLERANCES DO NOT APPLY
DATE:	08-27-02	PRODUCTION APPROVED FOR RELEASED STATUS ONLY			DIMENSIONS ARE NOMINAL
					SIZE D ILC15311202 REV B
					FORM FEG036, Rev. A