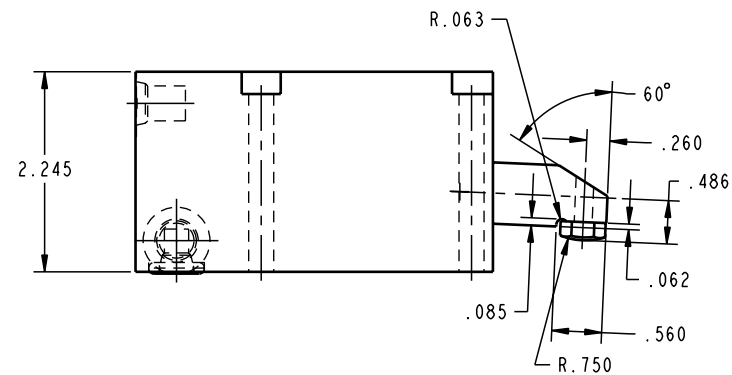
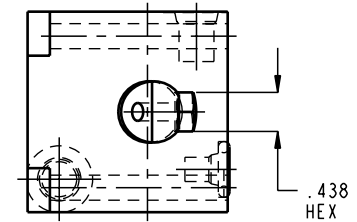
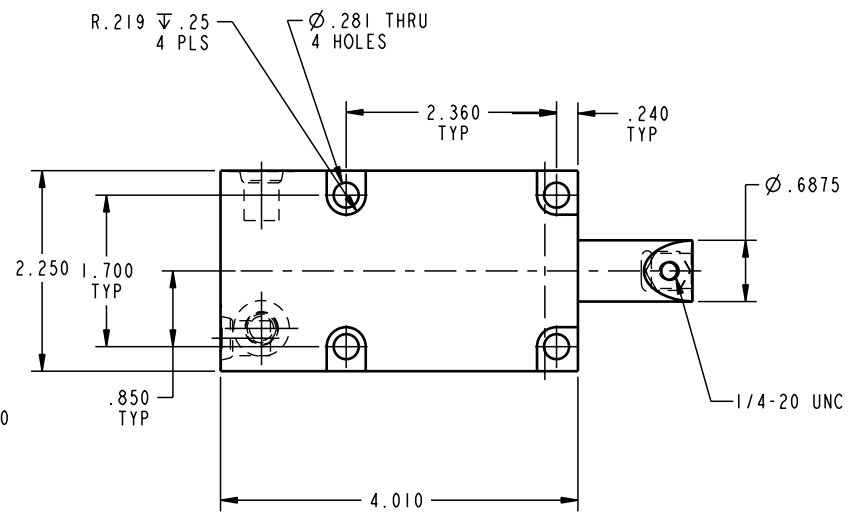
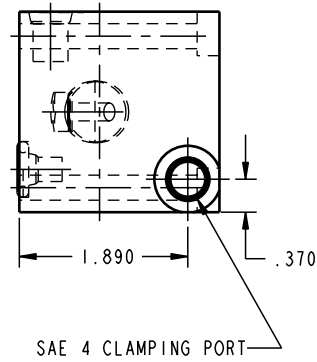
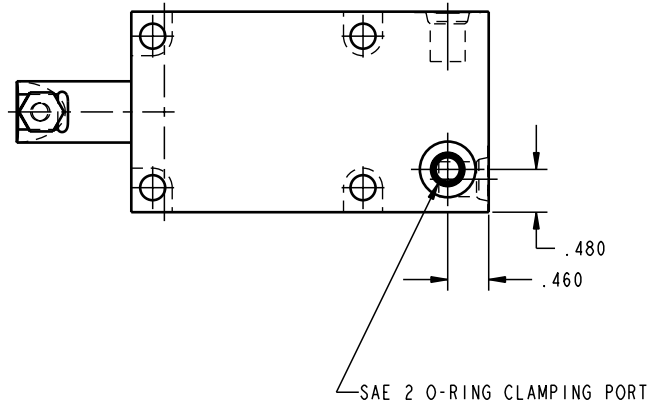
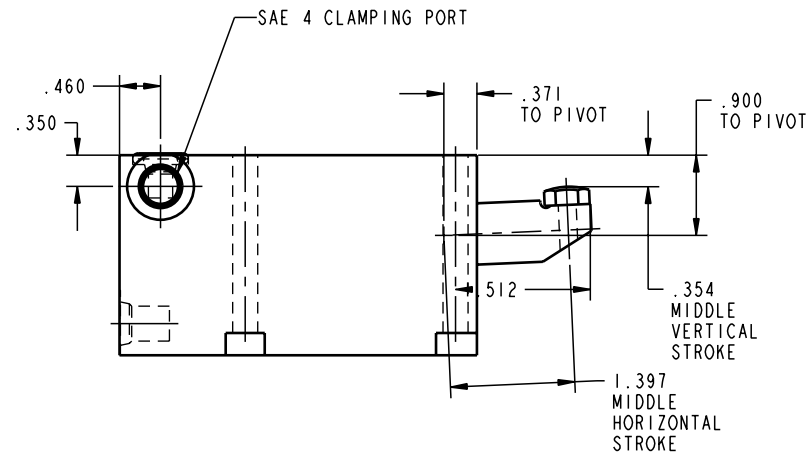
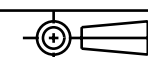


ILC15410801 REV A ECN 650  
SCALE 1.000



CAD CONTROL  
DRAWING



VEKTEK, INC.  
1334 E. SIXTH AVE. P.O. BOX 625  
EMPORIA, KS. 66801 U.S.A.

A	650	RELEASE	K. ROEMER	04-20-05	15410801	M	CLAMP, RETR, SA, 1700
REV	IN ACCORDANCE WITH ECN	EFFECTIVE DATE	REVISED BY	DATE	REFERENCE MODEL	REF REV	RETRACT
DRW BY:	K. ROEMER			DRAWING STATUS: <b>Released</b>			
DATE:	04-10-02			PRODUCTION APPROVED FOR RELEASED STATUS ONLY			

TOLERANCES DO NOT APPLY  
DIMENSIONS ARE NOMINAL

SIZE  
D ILC15410801 REV A

FORM FEG036, Rev. A

SHEET 1 OF 1