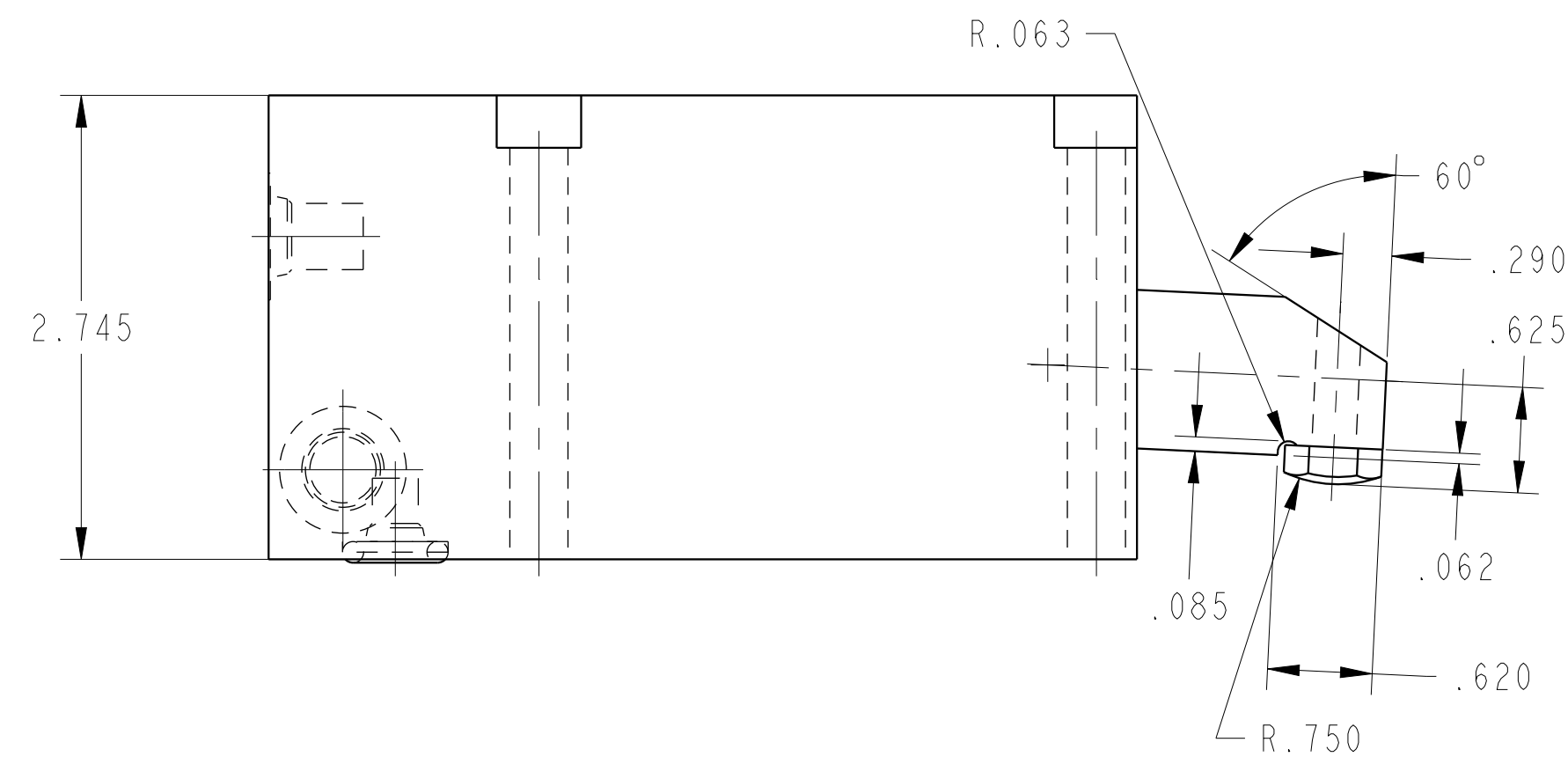
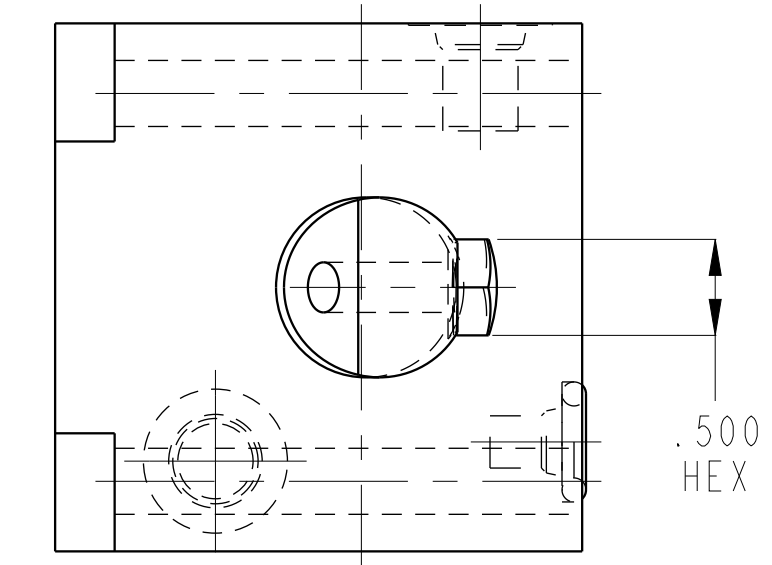
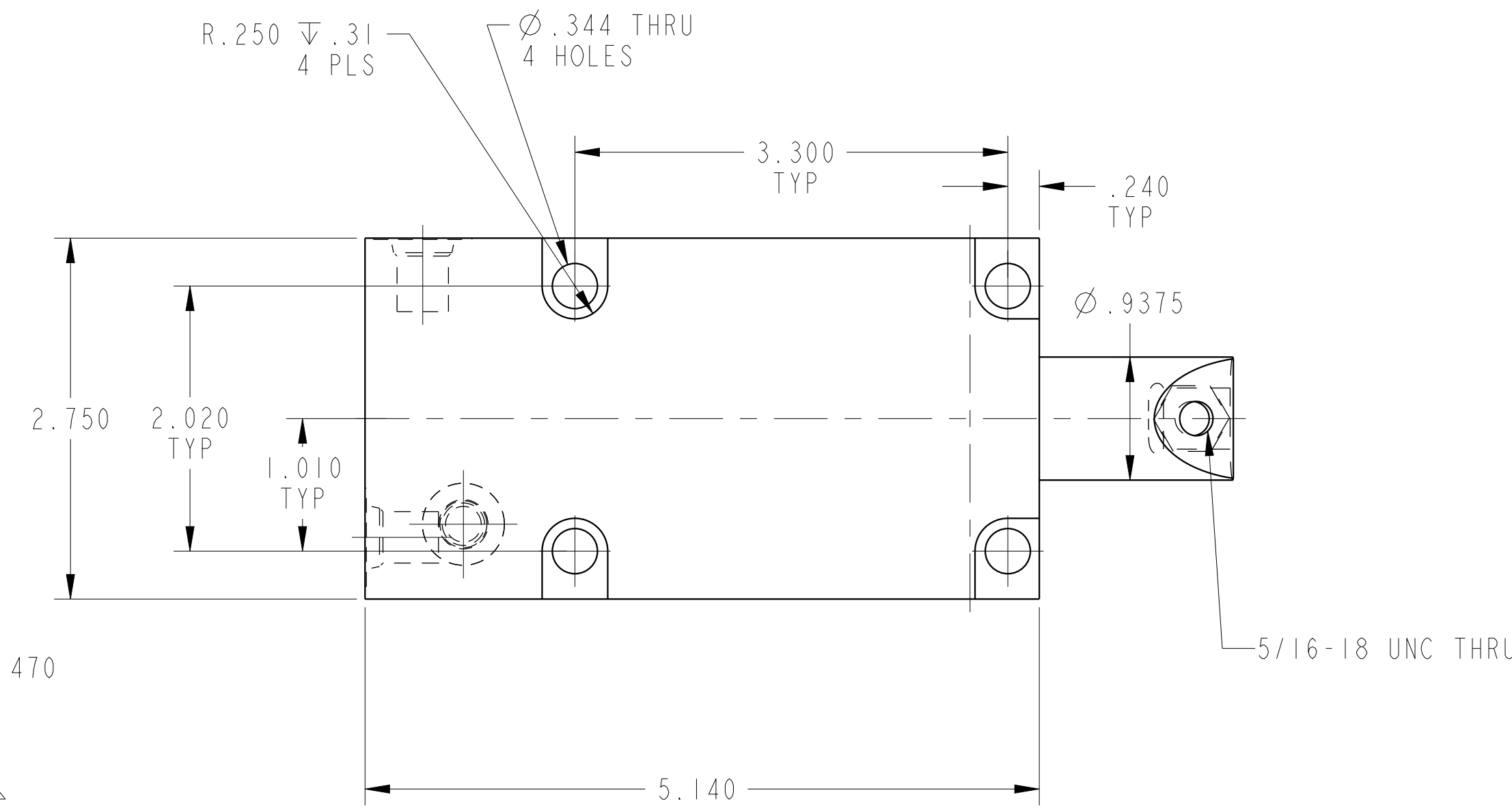
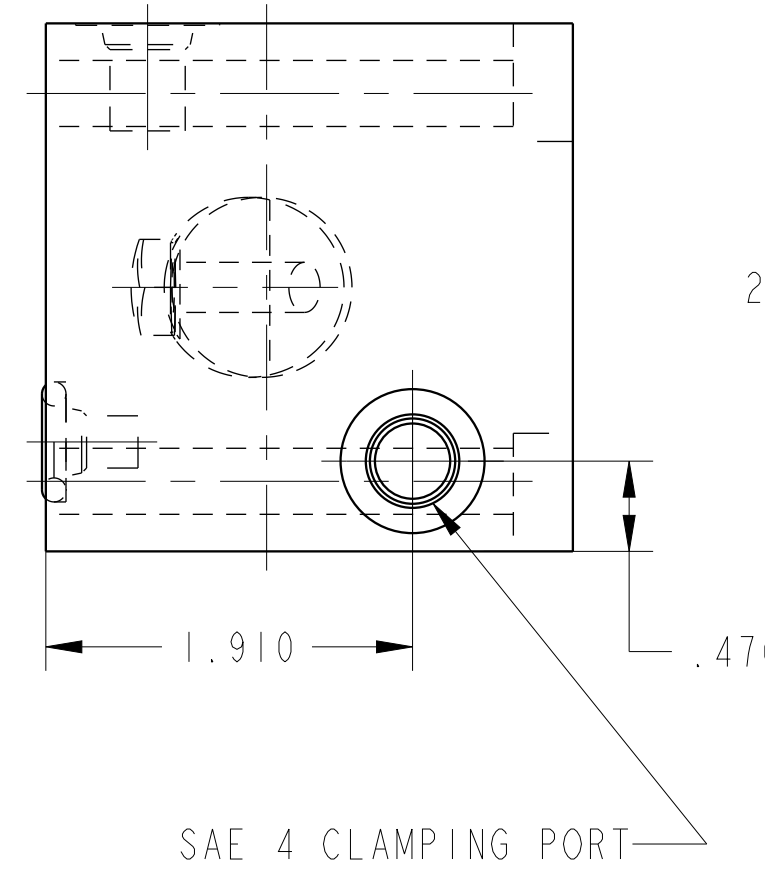
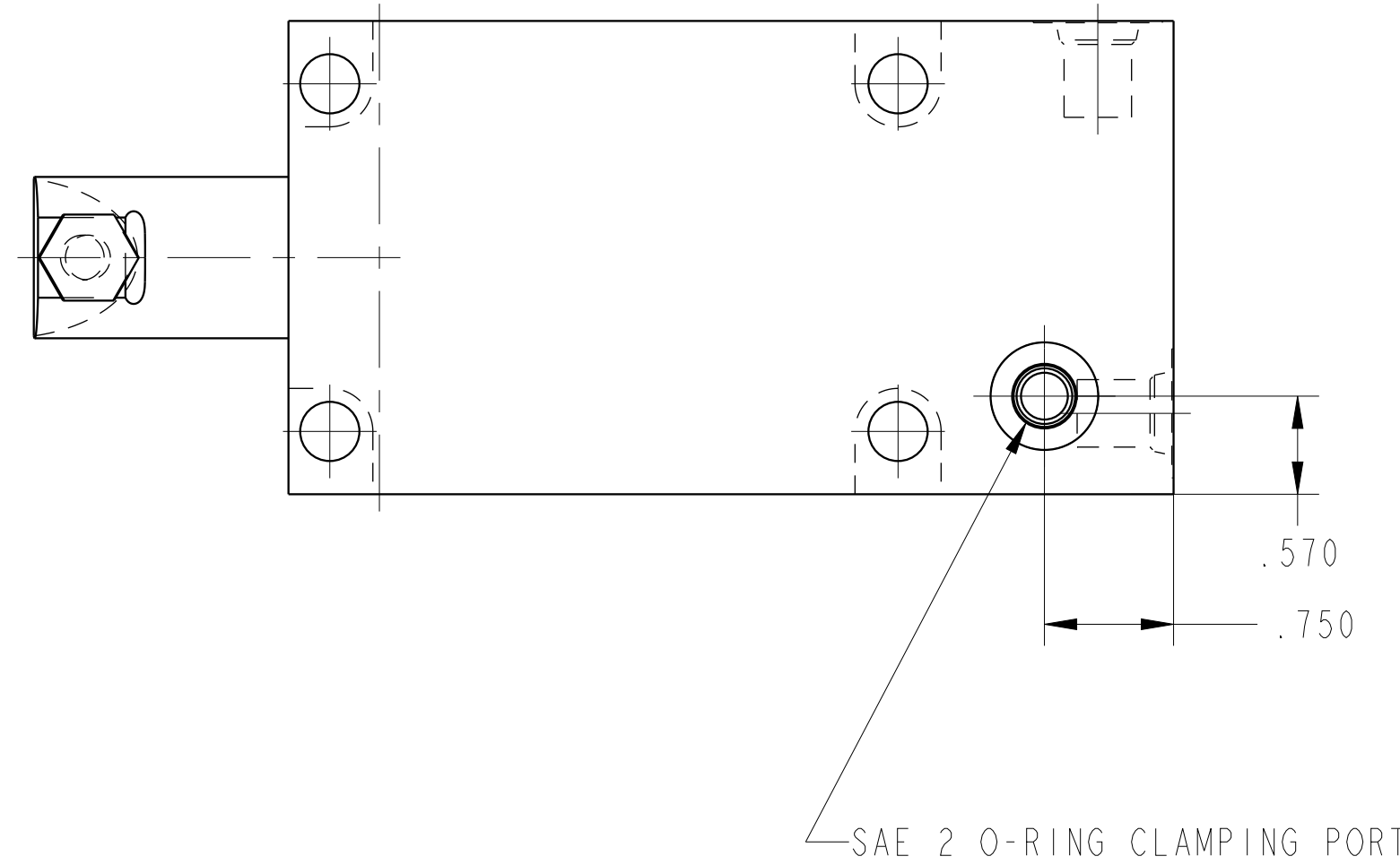
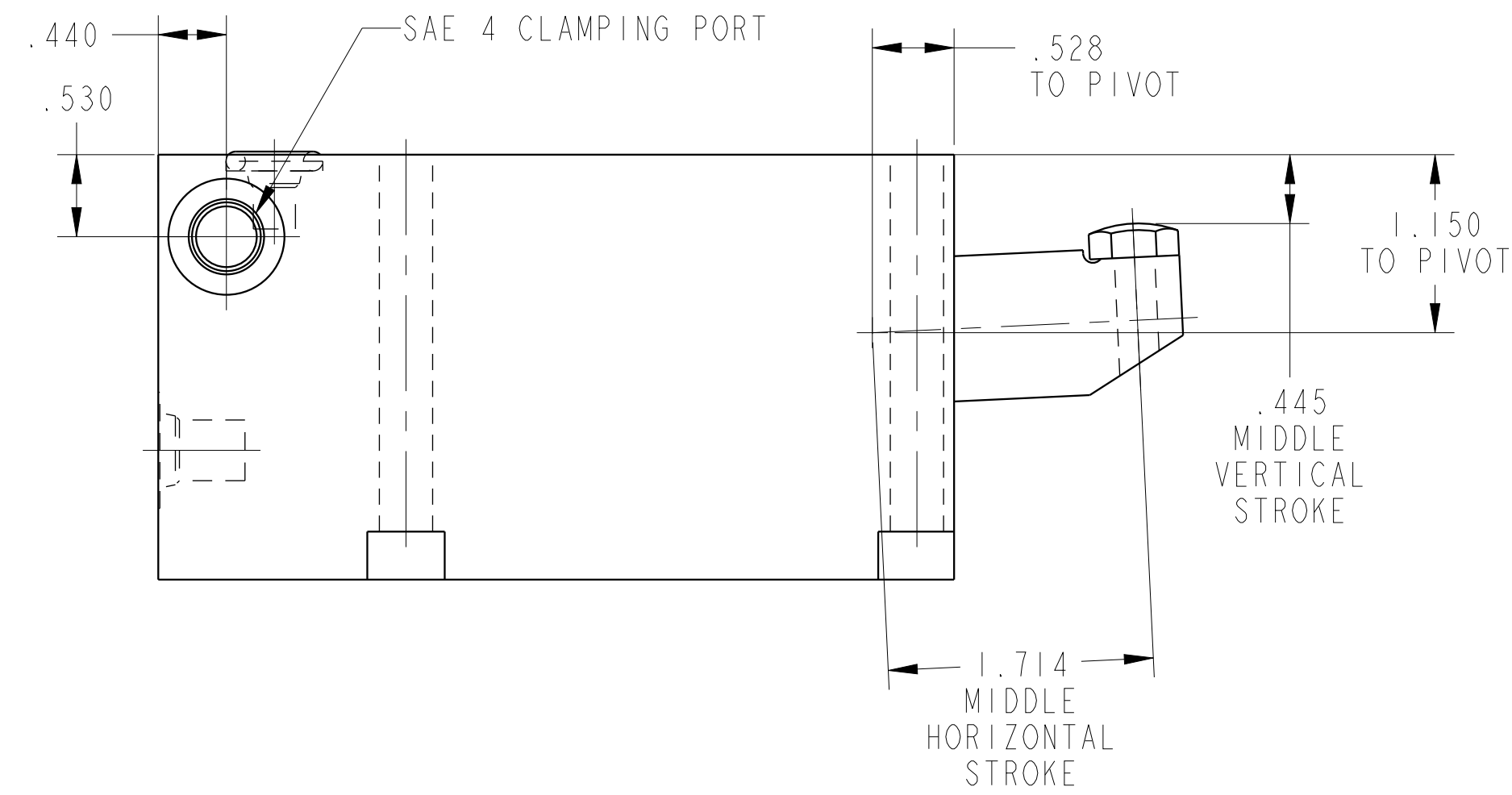
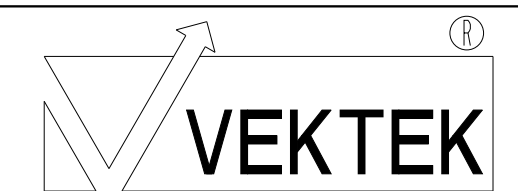


ILC15410803 REV B ECN 5145
SCALE 1.000



CAD CONTROL
DRAWING



VEKTEK, INC.
1334 E. SIXTH AVE. P.O. BOX 625
EMPORIA, KS. 66801 U.S.A.

B	5145	RELEASE	JDW	08/31/23
REV	IN ACCORDANCE WITH ECN	EFFECTIVE DATE	REVISED BY	DATE
DRW BY:	K. ROEMER	DRAWING STATUS: Released		
DATE:	04-10-02	PRODUCTION APPROVED FOR RELEASED STATUS ONLY		

15410803	V
REFERENCE MODEL	REF REV
TOLERANCES DO NOT APPLY DIMENSIONS ARE NOMINAL	

CLAMP, RETR, SA, 3300	
RETRACT	
SIZE D	ILC15410803 REV B