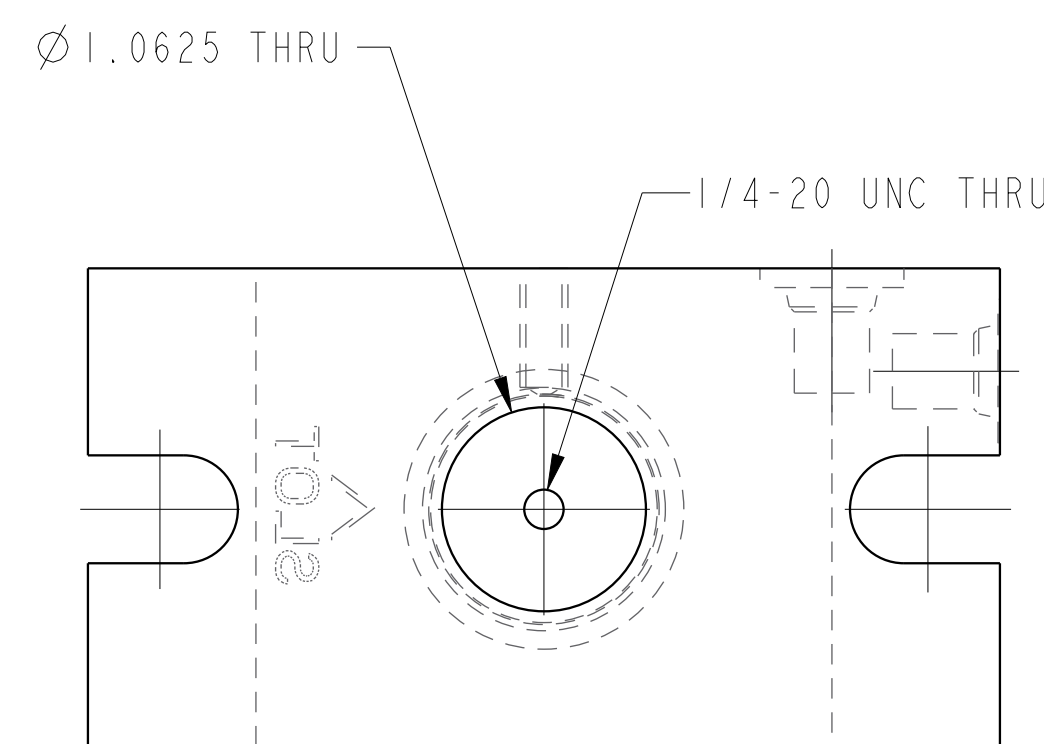
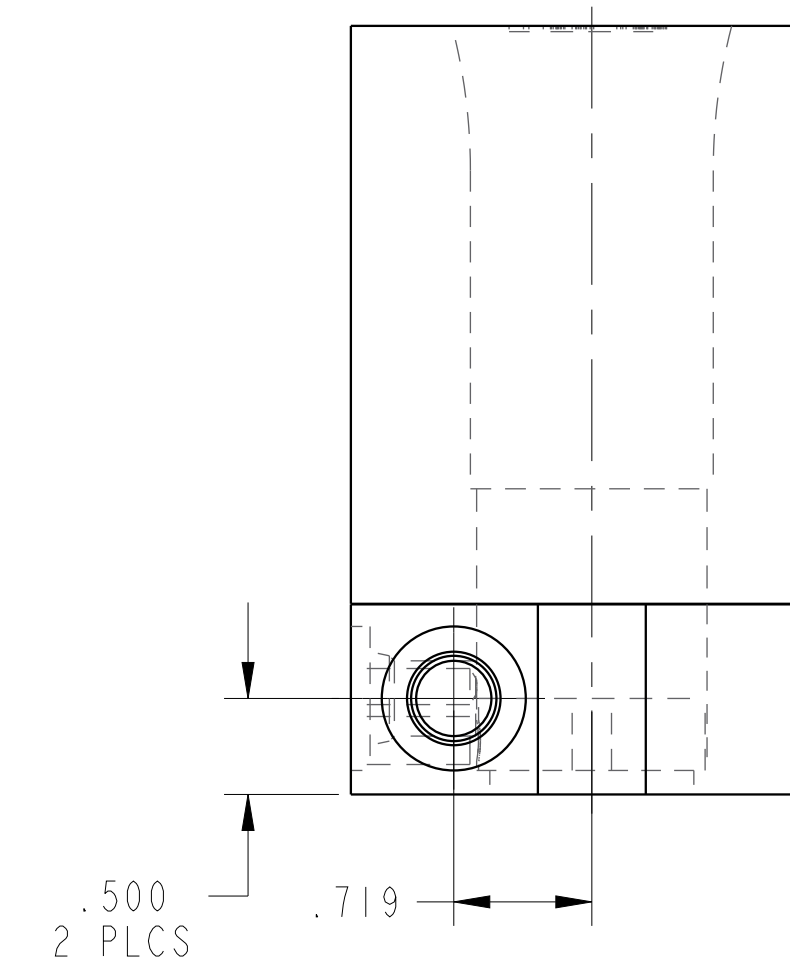
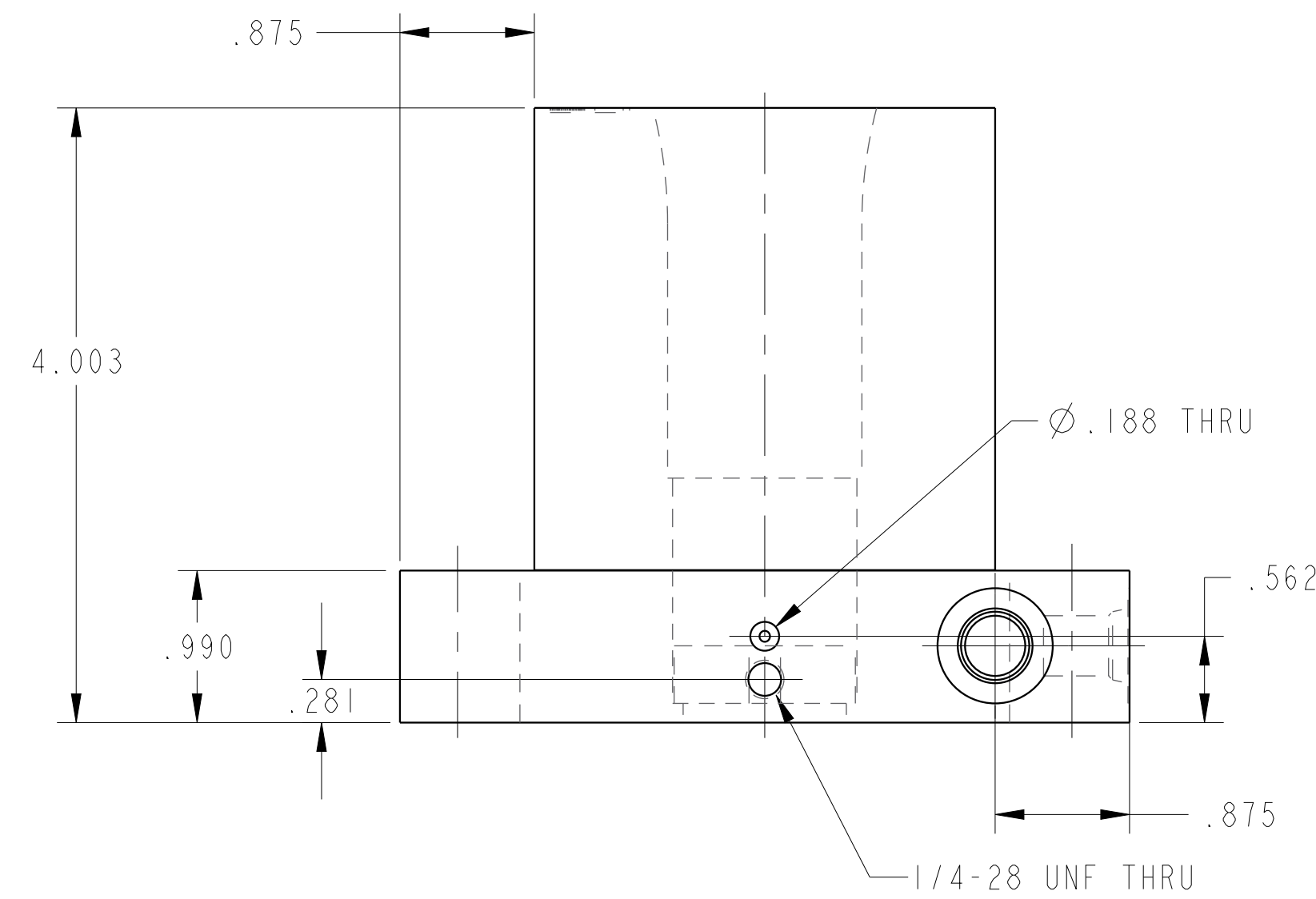
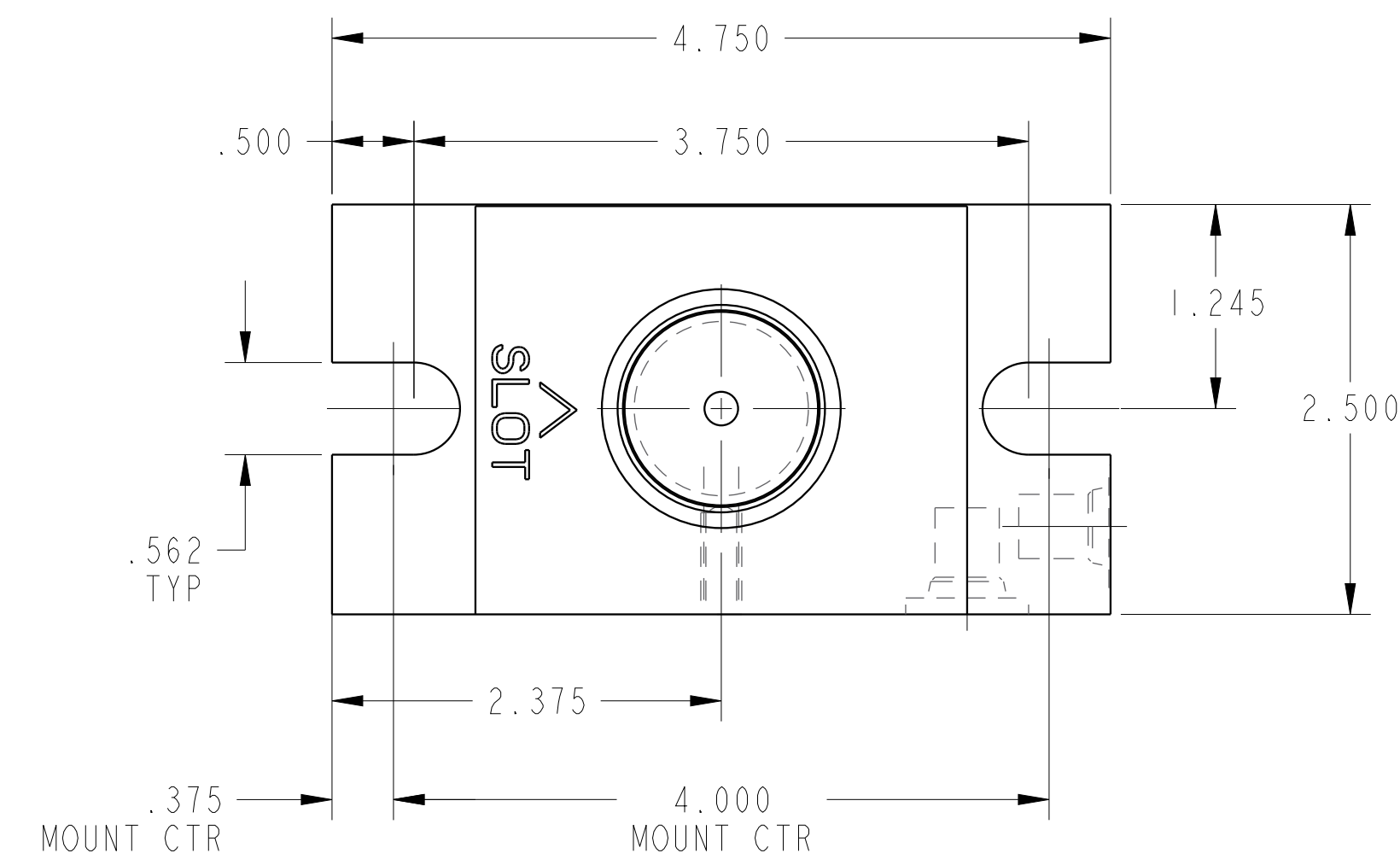
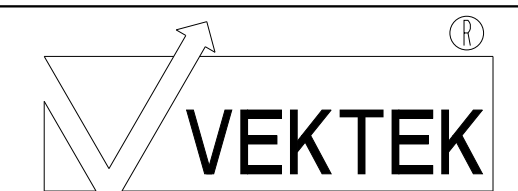


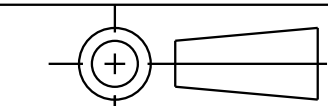
ILC15511901 REV B ECN 5090



CAD CONTROL
DRAWING



VEKTEK, INC.
1334 E. SIXTH AVE. P.O. BOX 625
EMPORIA, KS. 66801 U.S.A.



B	5090	RELEASE	RLK	5/3/23	15511901	S	WISE, COLLET, SGL
REV	IN ACCORDANCE WITH ECN	EFFECTIVE DATE	REVISED BY	DATE	REFERENCE MODEL	REF REV	---
DRW BY:	DRAWING STATUS: Released				TOLERANCES DO NOT APPLY		SIZE
DATE:	PRODUCTION APPROVED FOR RELEASED STATUS ONLY				DIMENSIONS ARE NOMINAL		D ILC15511901
							REV B

SHEET 1 OF 1