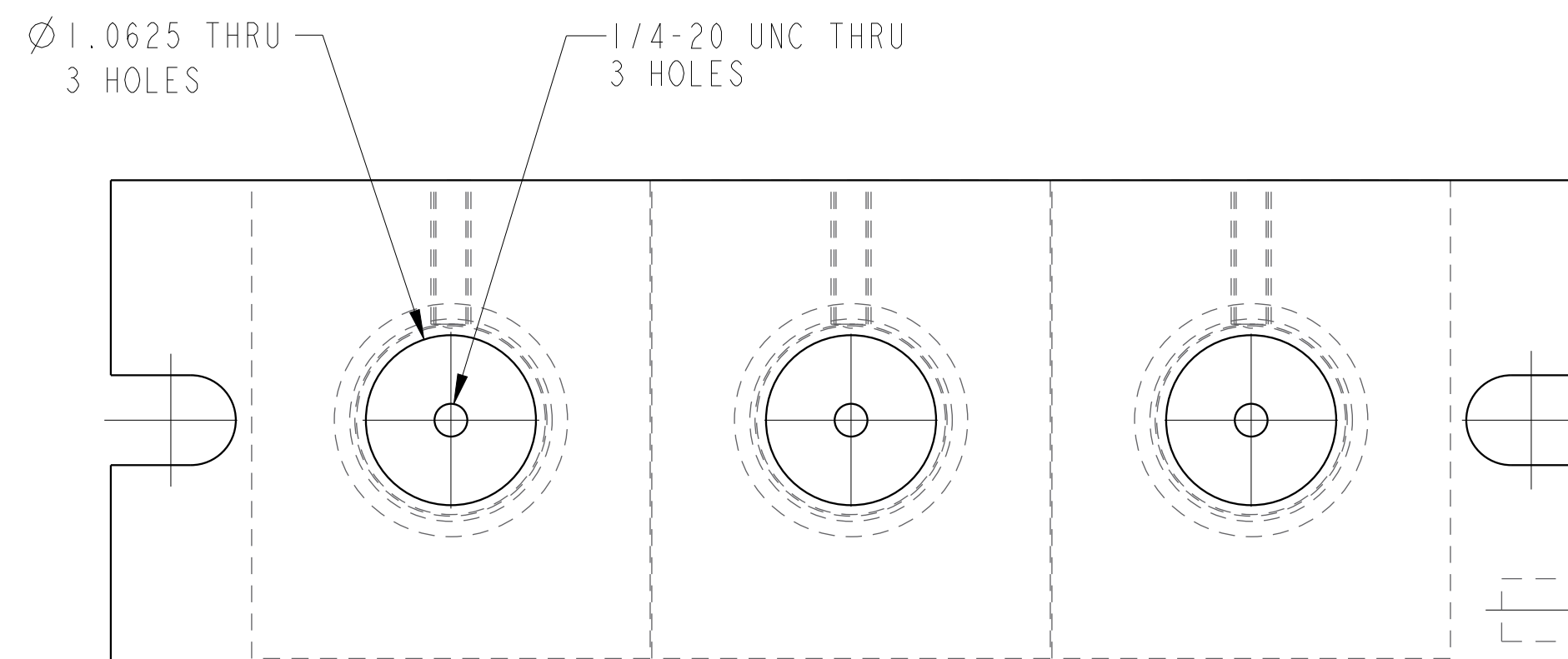
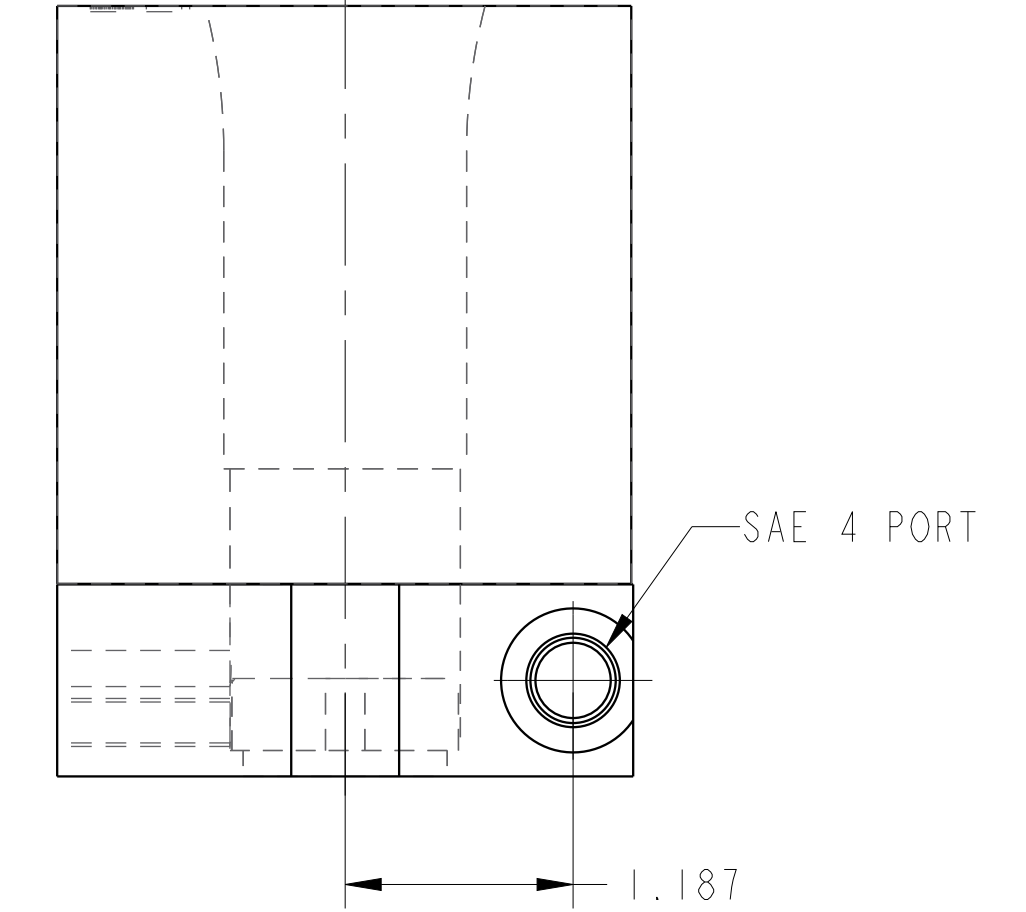
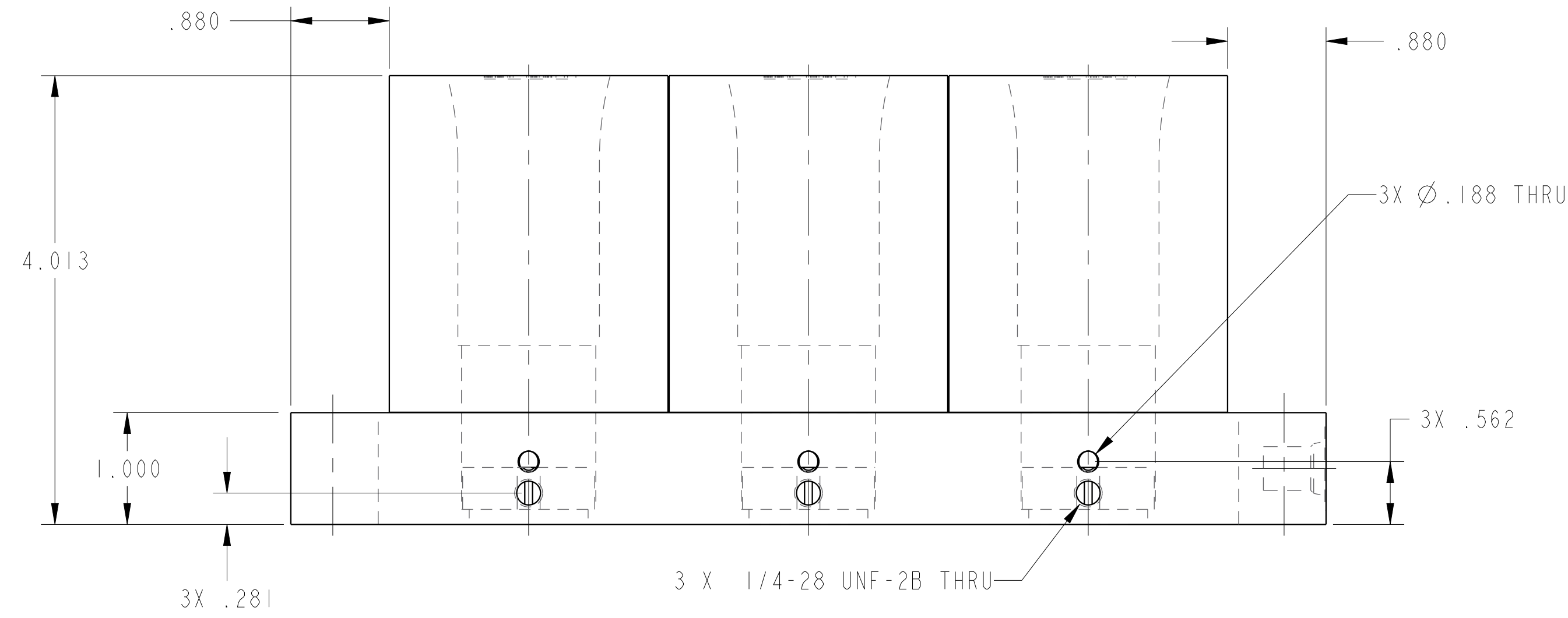
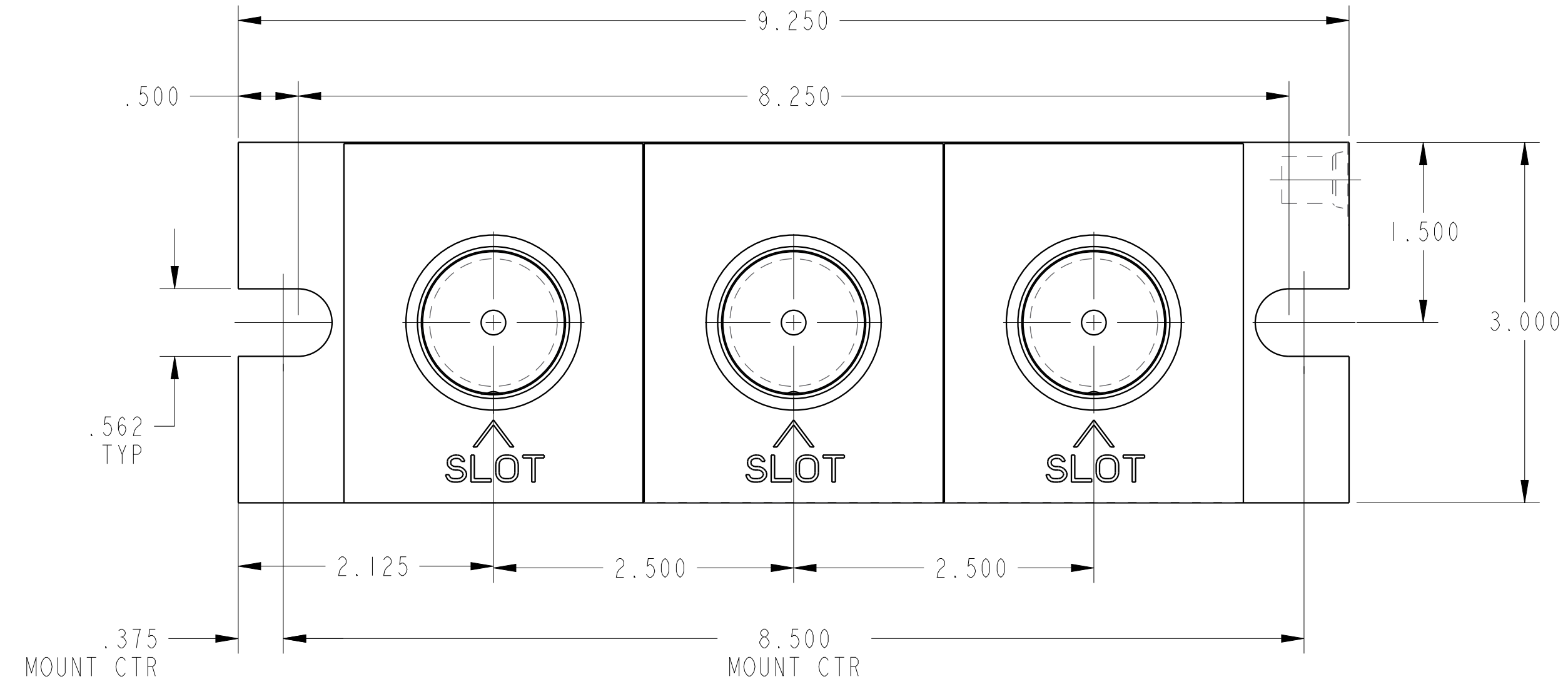
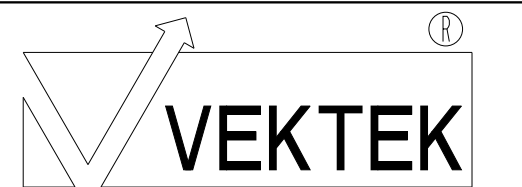


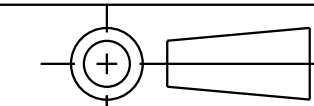
ILC15511903 REV B ECN 5090



CAD CONTROL DRAWING



VEKTEK, INC.  
1334 E. SIXTH AVE. P.O. BOX 625  
EMPORIA, KS. 66801 U.S.A.



B	5090	RELEASE	RLK	5/3/23	15511903	N	WISE, COLLET, TPL
REV	IN ACCORDANCE WITH ECN	EFFECTIVE DATE	REVISED BY	DATE	REFERENCE MODEL	REF REV	***
DRW BY:	DRAWING STATUS: Released			TOLERANCES DO NOT APPLY			
DATE:	PRODUCTION APPROVED FOR RELEASED STATUS ONLY			DIMENSIONS ARE NOMINAL			

SIZE D ILC15511903 REV B

FORM FEG036, Rev. B