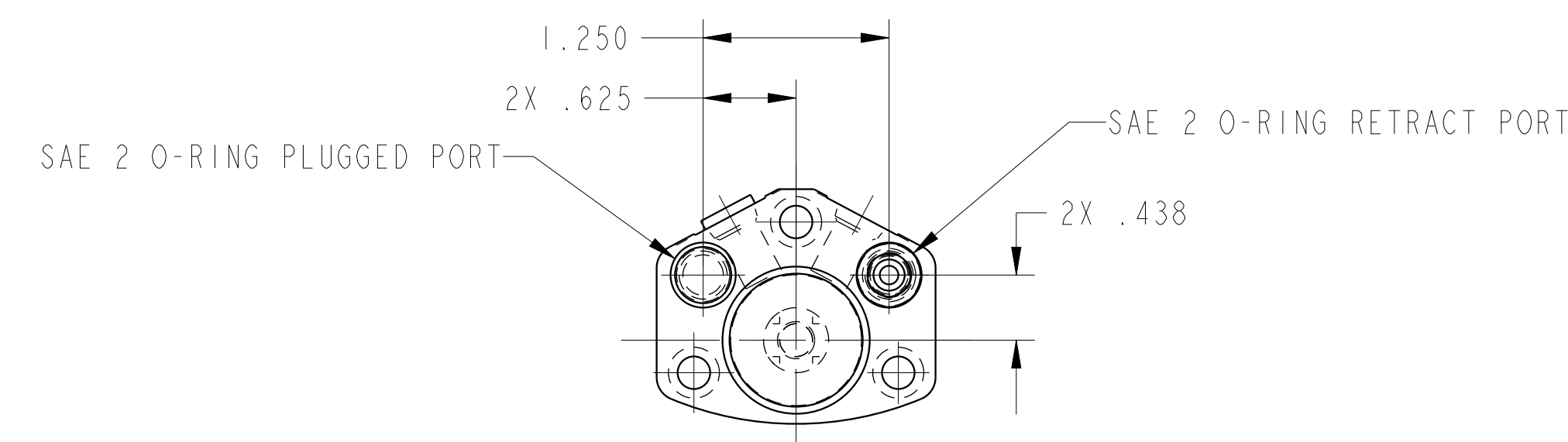
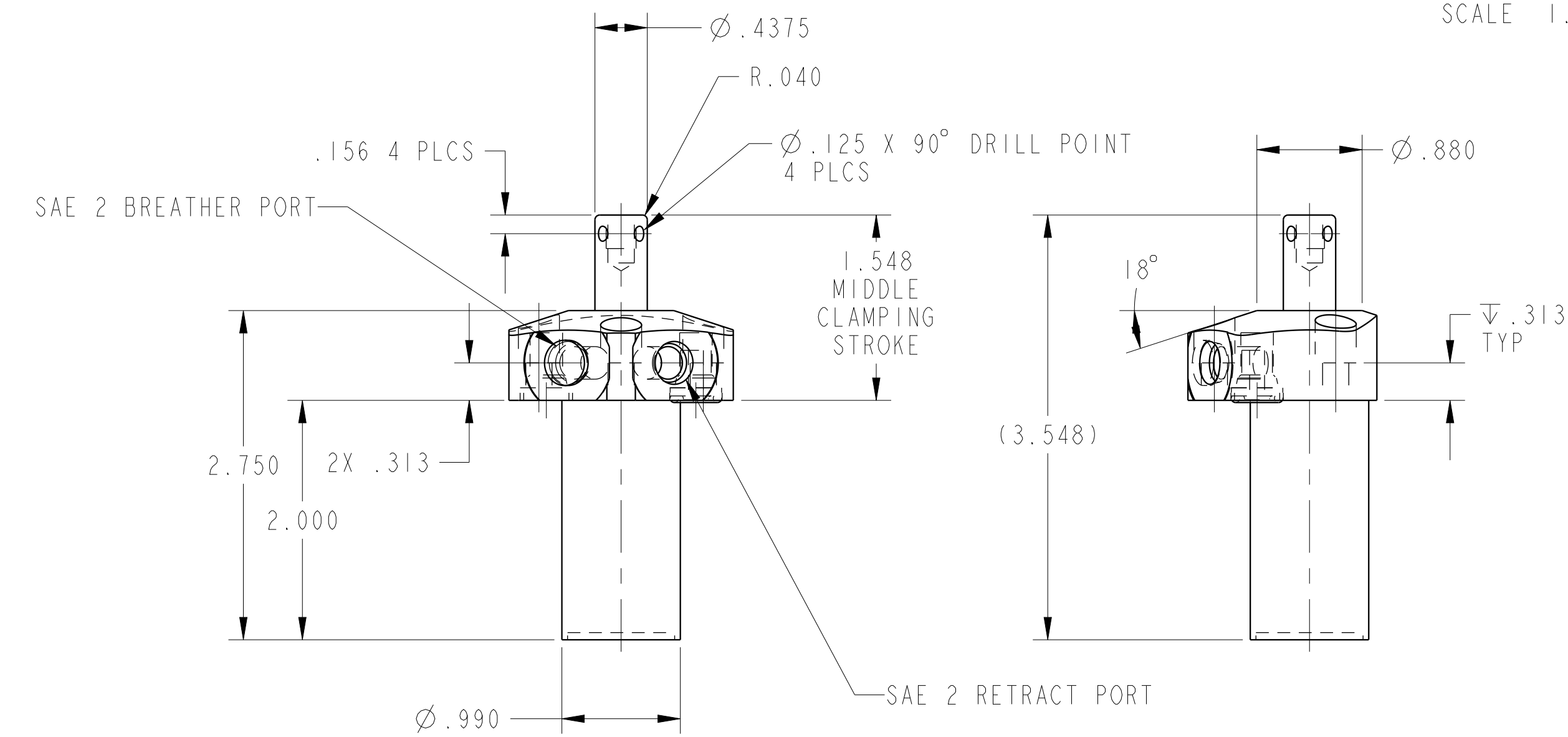


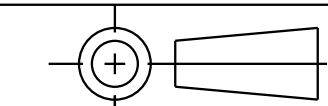
ILC15610500L REV A ECN 4609
SCALE 1.000



CAD CONTROL
DRAWING



VEKTEK, INC.
1334 E. SIXTH AVE. P.O. BOX 625
EMPORIA, KS. 66801 U.S.A.



| | | | | |
|---------|------------------------|--|------------|---------|
| A | 4609 | RELEASE | RLK | 1/21/22 |
| REV | IN ACCORDANCE WITH ECN | EFFECTIVE DATE | REVISED BY | DATE |
| DRW BY: | RLK | DRAWING STATUS: Released | | |
| DATE: | 1/21/22 | PRODUCTION APPROVED FOR RELEASED STATUS ONLY | | |

| | | |
|---|---------|---------------------|
| 15610500L | A | SC, TF, 450, SA, LH |
| REFERENCE MODEL | REF REV | |
| TOLERANCES DO NOT APPLY DIMENSIONS ARE NOMINAL | | SIZE D |

| | |
|---------------------|-------|
| ILC15610500L | REV A |
| FORM FEG036, Rev. B | |