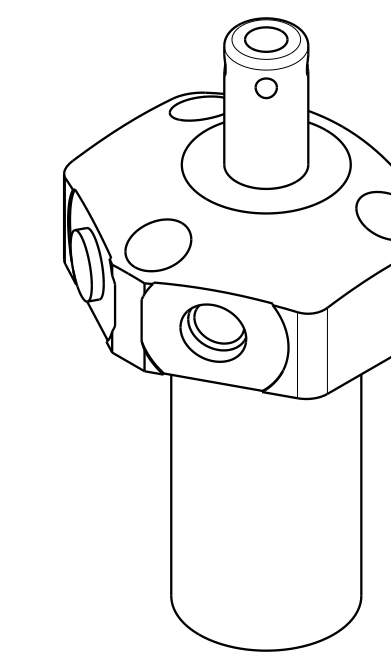
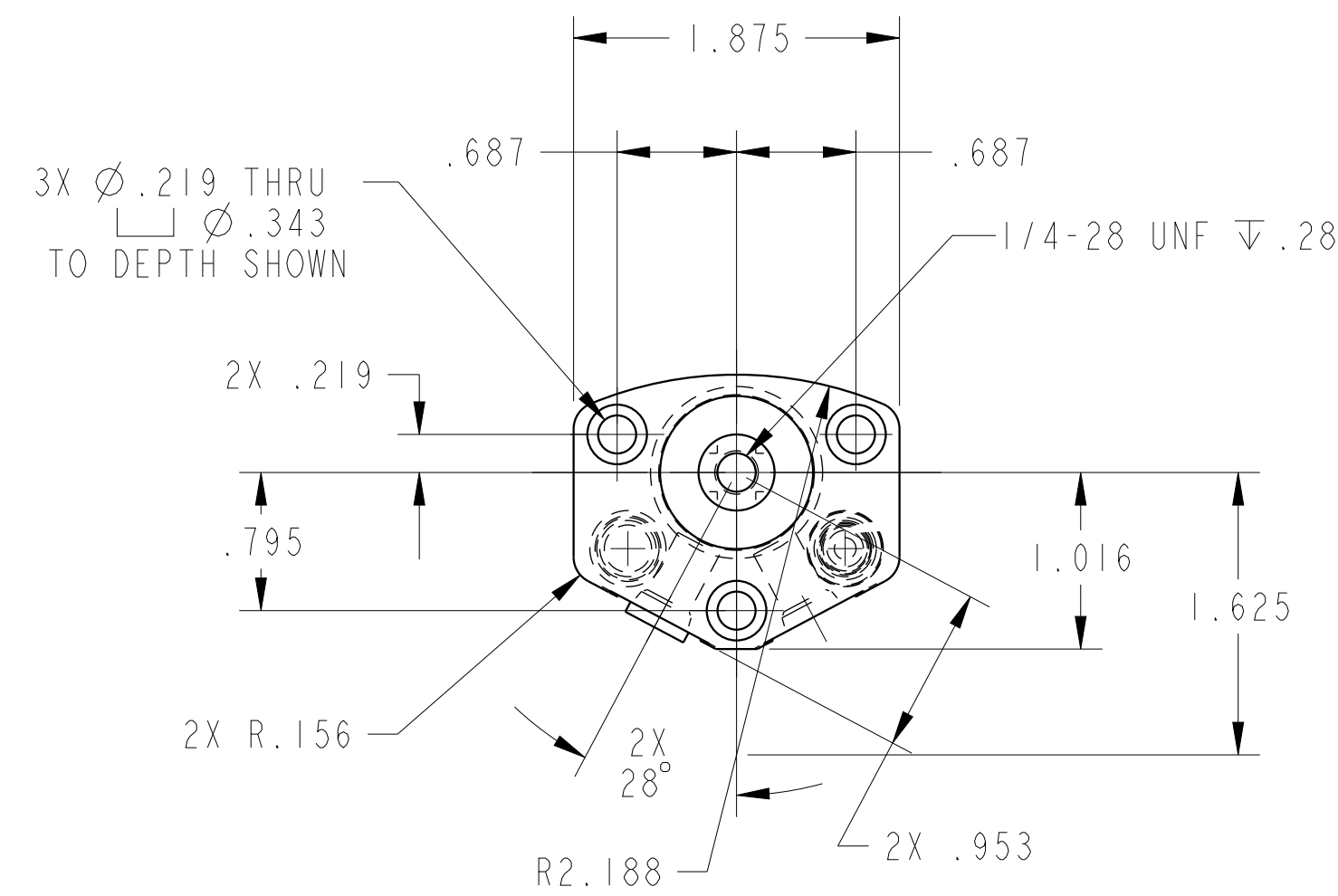


1

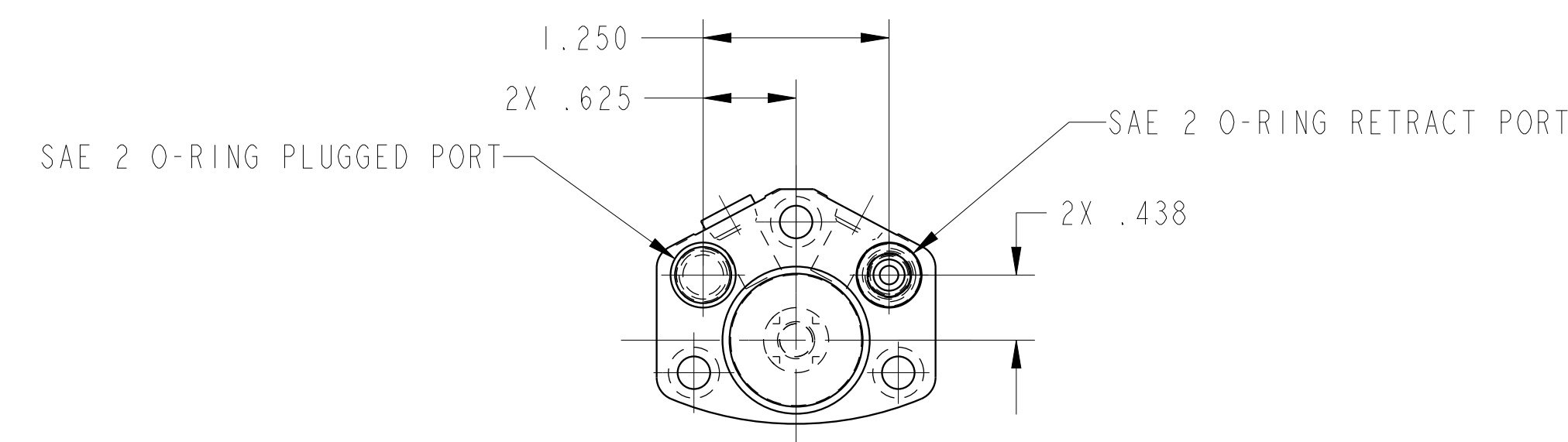
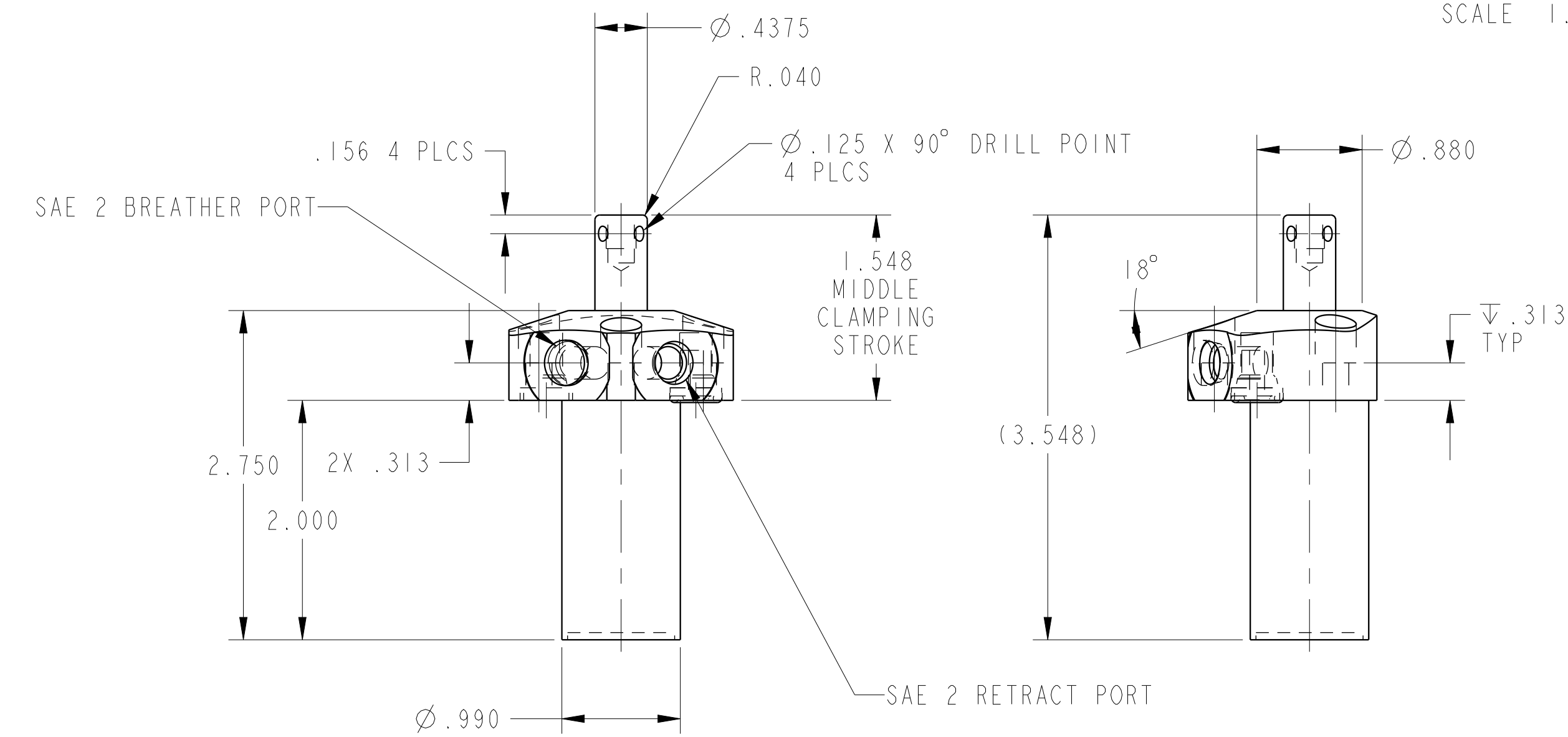
2

3


4



ILC15610500R REV A ECN 4609  
SCALE 1.000



**CAD CONTROL DRAWING**



VEKTEK, INC.  
1334 E. SIXTH AVE. P.O. BOX 625  
EMPORIA, KS. 66801 U.S.A.

A	4609	RELEASE	RLK	1/21/22
REV	IN ACCORDANCE WITH ECN	EFFECTIVE DATE	REVISED BY	DATE
DRW BY: RLK		DRAWING STATUS: <b>Released</b>		
DATE: 1/21/22		PRODUCTION APPROVED FOR RELEASED STATUS ONLY		

15610500R	A
REFERENCE MODEL	REF REV
TOLERANCES DO NOT APPLY DIMENSIONS ARE NOMINAL	

SIZE	D	REV	A
ILC15610500R		FORM FEG036, Rev. B	

2

3

4