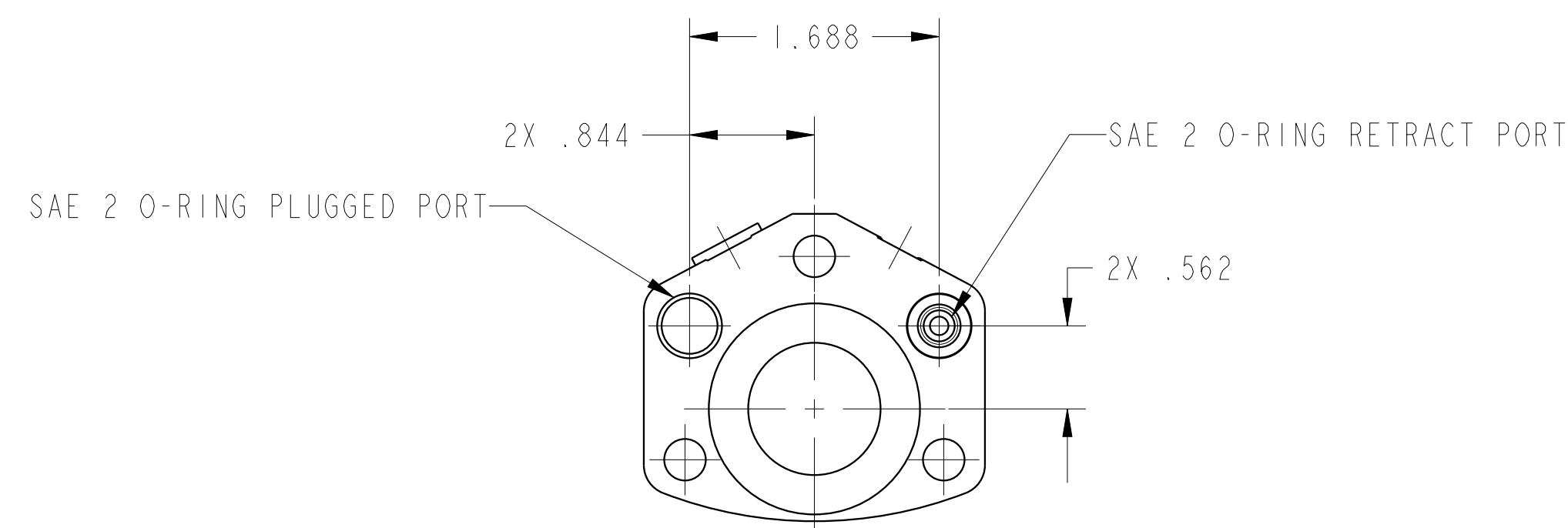
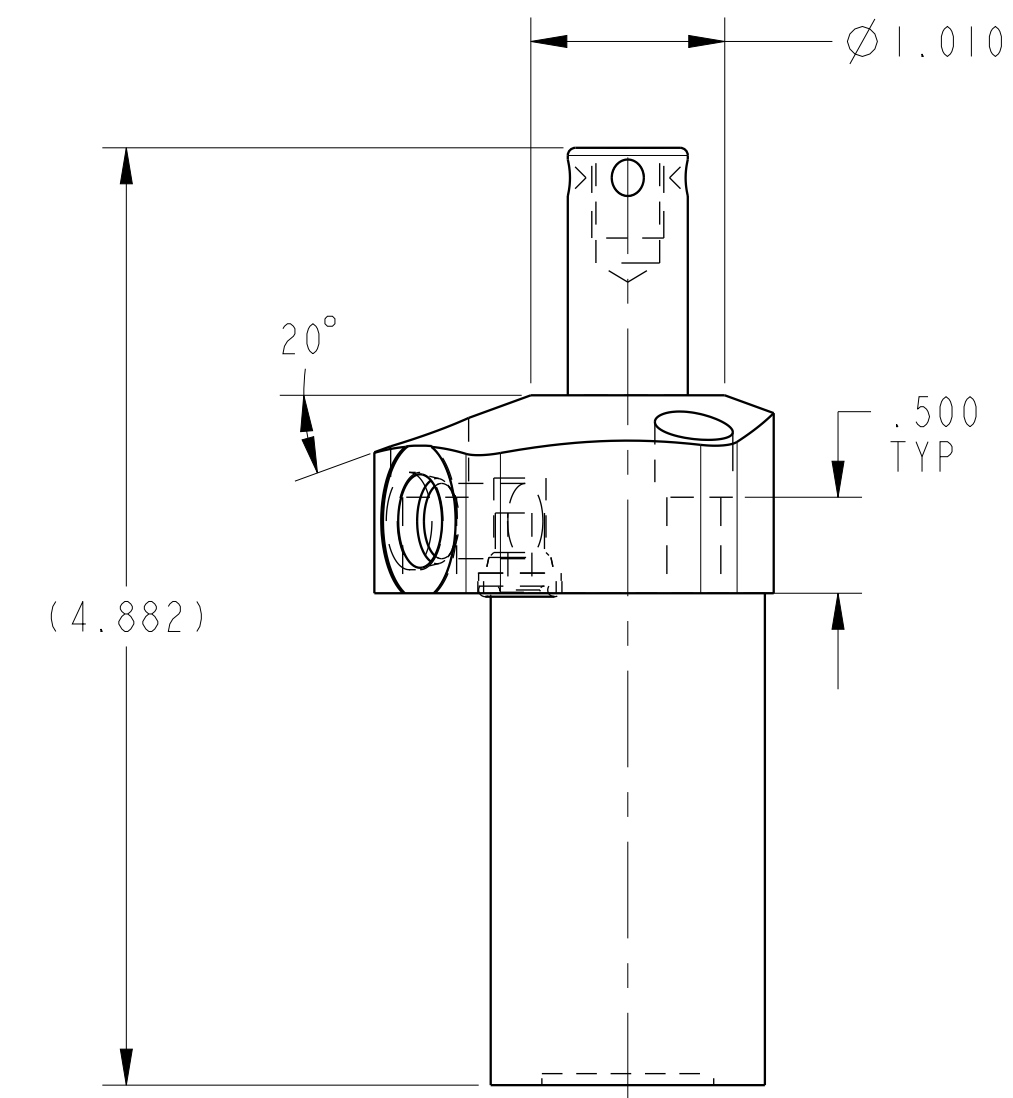
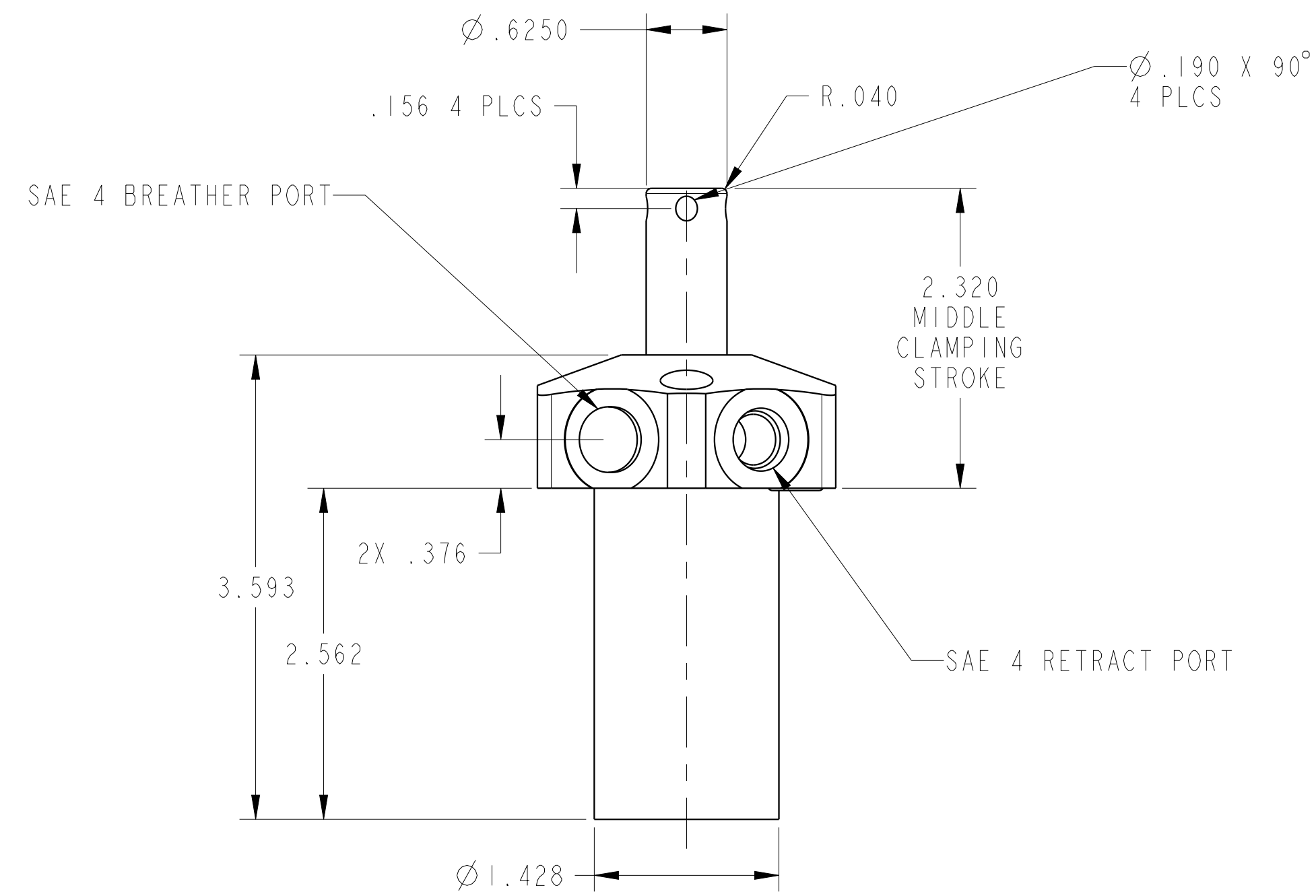
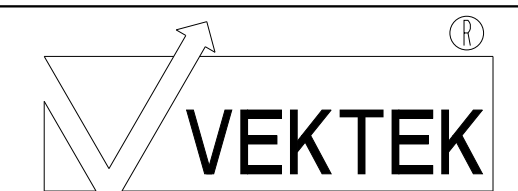


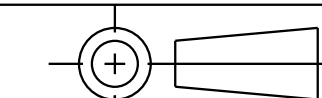
1LC15610900S REVA ECN4454



CAD CONTROL DRAWING



VEKTEK, INC.  
1334 E. SIXTH AVE. P.O. BOX 625  
EMPORIA, KS. 66801 U.S.A.



A	4454	RELEASE	ALS	5/25/21	15610900S	A	SC, TF, 1100, SA, STR
REV	IN ACCORDANCE WITH ECN	EFFECTIVE DATE	REVISED BY	DATE	REFERENCE MODEL	REF REV	
DRW BY:	ALS	DRAWING STATUS: Released			TOLERANCES DO NOT APPLY DIMENSIONS ARE NOMINAL		SIZE D
DATE:	5/25/21	PRODUCTION APPROVED FOR RELEASED STATUS ONLY			1LC15610900S		REV A