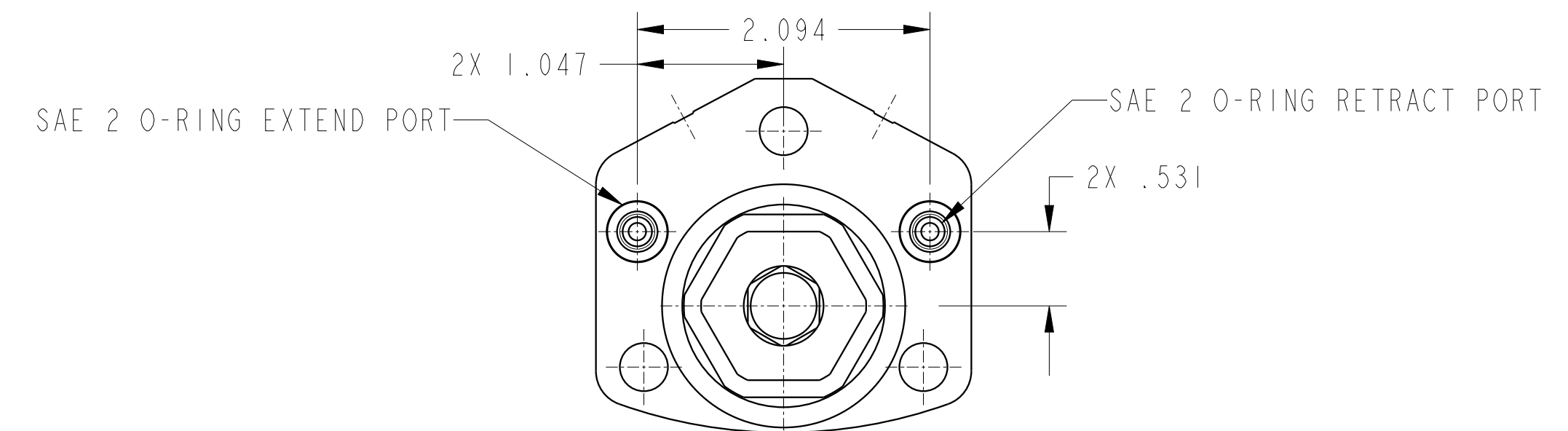
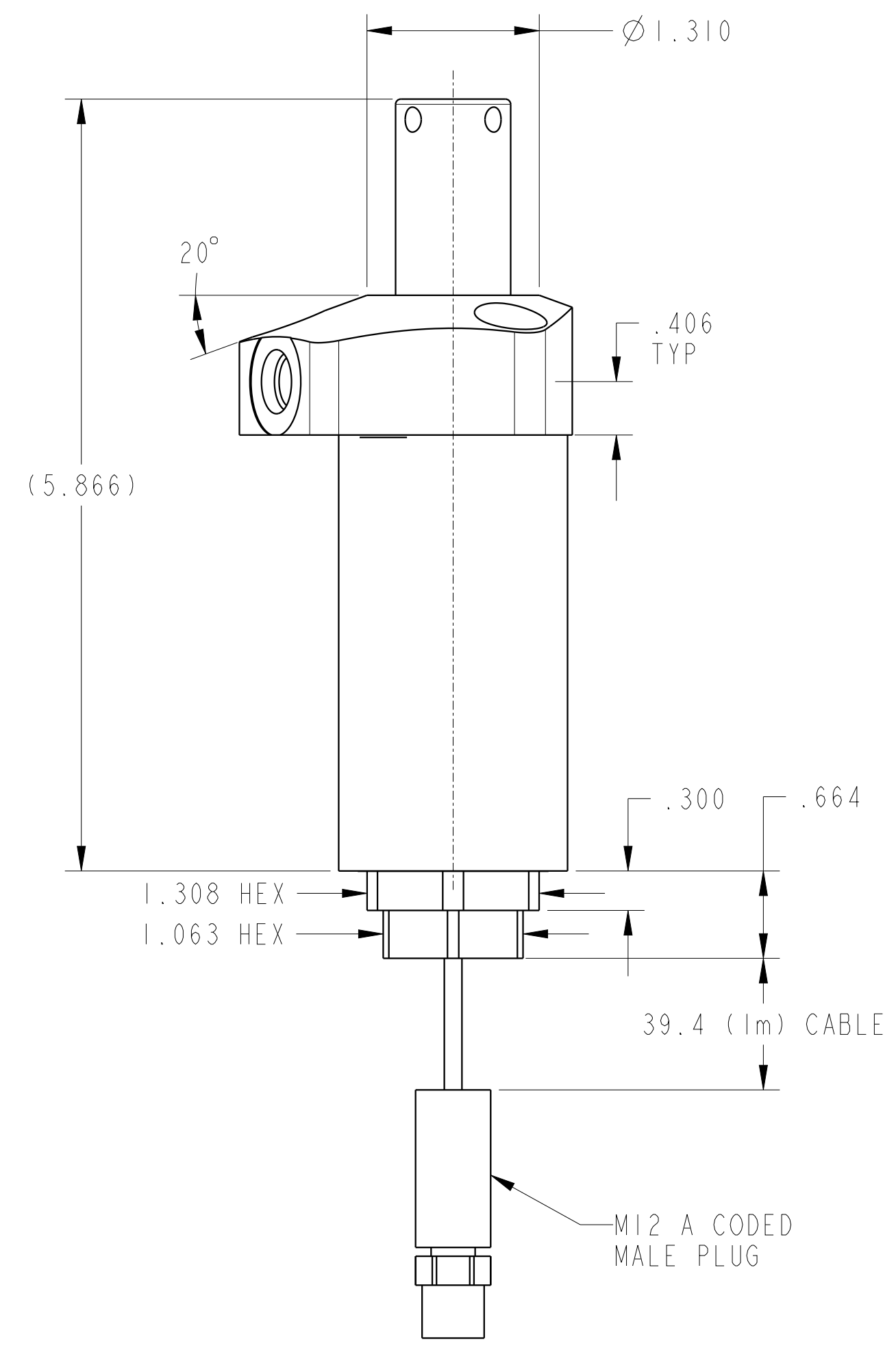
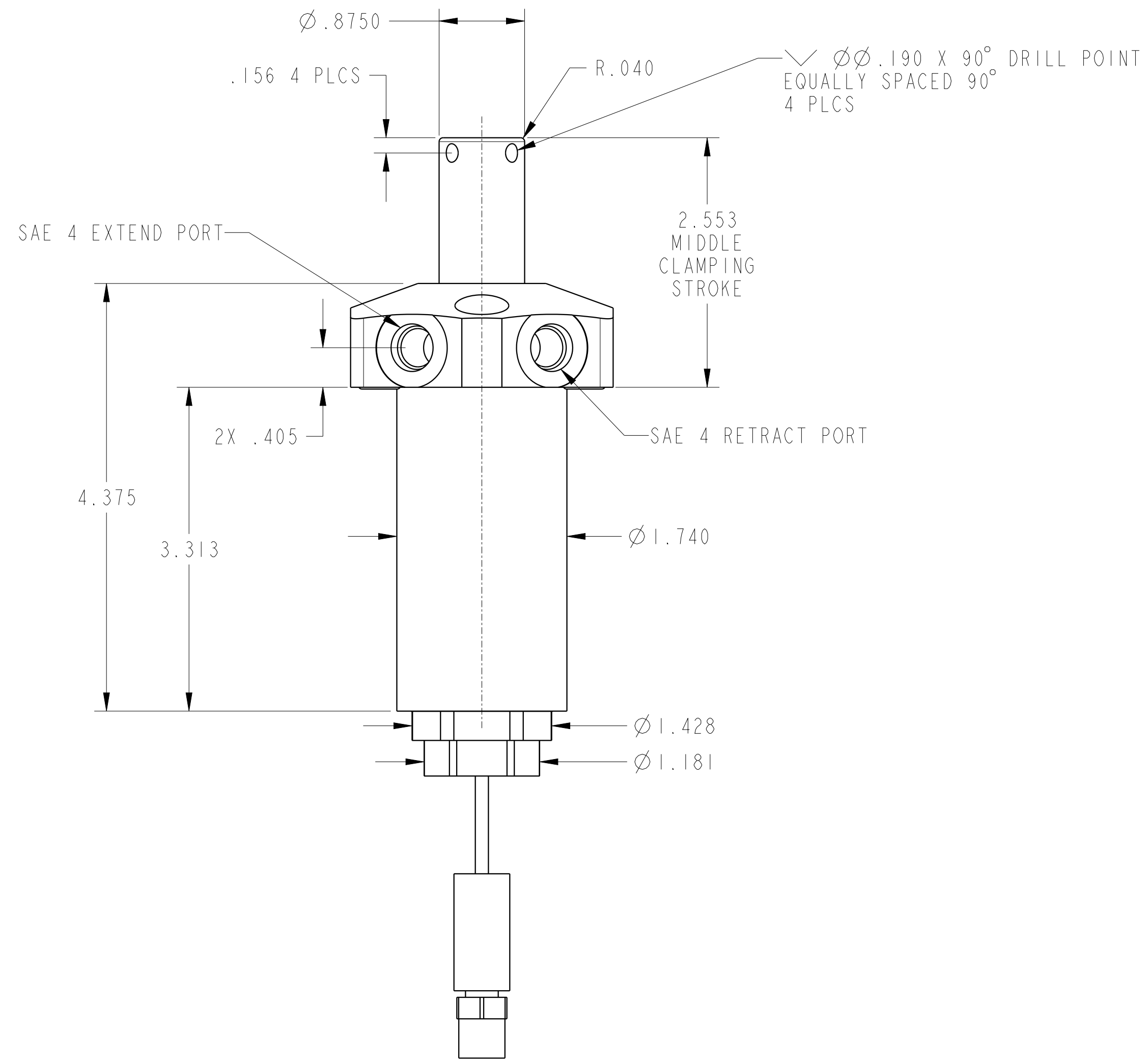
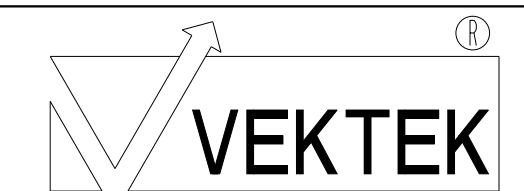


ILC15621300RUS REVA ECN5529



CAD CONTROL DRAWING



VEKTEK, INC.
 1334 E. SIXTH AVE. P.O. BOX 625
 EMPORIA, KS. 66801 U.S.A.

A	5529	RELEASE	ALS	3/18/25
REV	IN ACCORDANCE WITH ECN	EFFECTIVE DATE	REVISED BY	DATE
DRW BY:	ALS	DRAWING STATUS: Released		
DATE:	10/28/24	PRODUCTION APPROVED FOR RELEASED STATUS ONLY		

15621300RUS	A	SC, TF, 2600, DA, RH, US
TOLERANCES DO NOT APPLY	SIZE D	ILC15621300RUS
DIMENSIONS ARE NOMINAL	REV A	