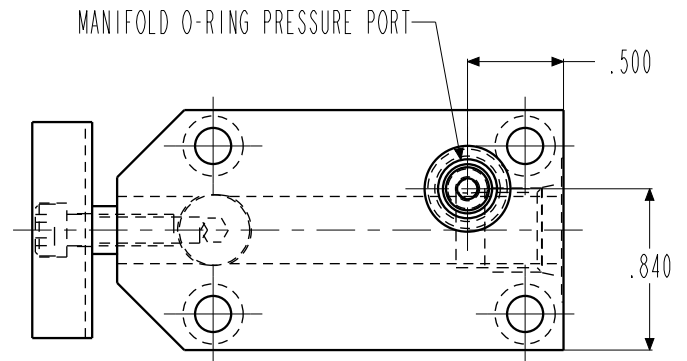
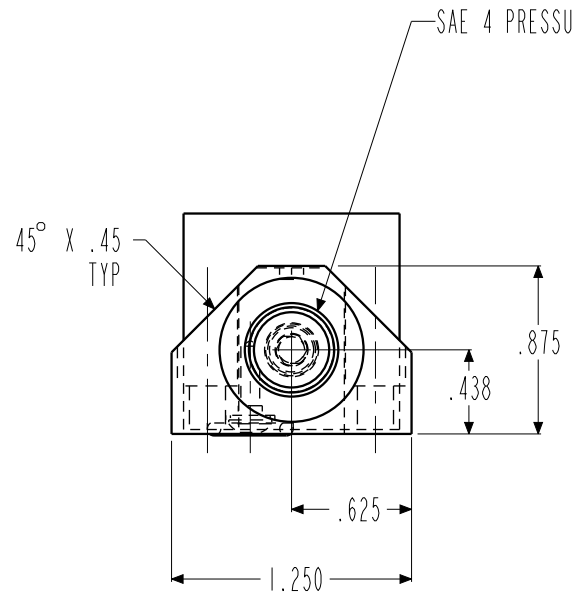
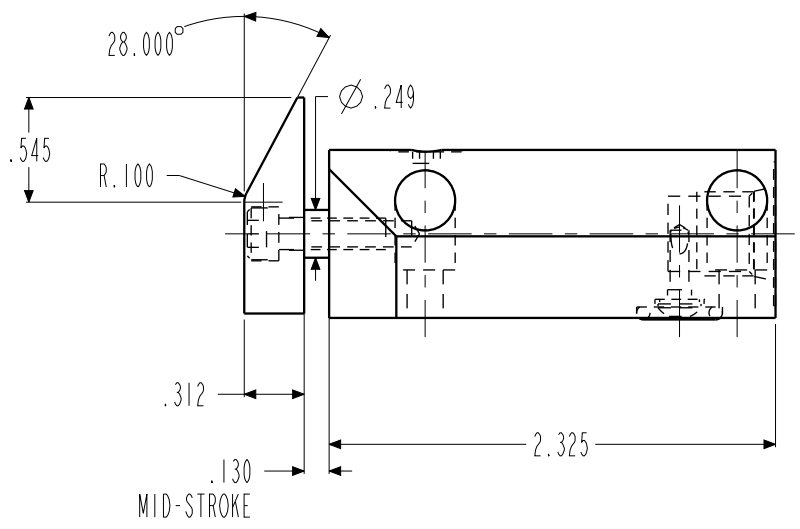
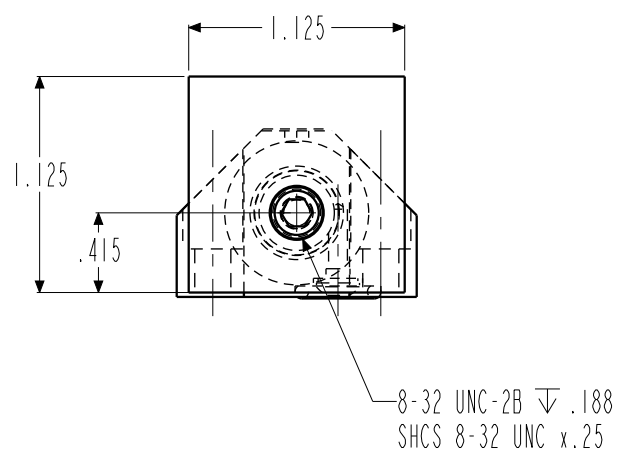


ILC15910400 REV D ECN 3824



CAD CONTROL DRAWING			
		VEKTEK, INC. 1334 E. SIXTH AVE. P.O. BOX 625 EMPORIA, KS. 66801 U.S.A.	

D	3824	RELEASE	JDW	05/22/19	15910400	D	CROWDER, PART, 550
REV	IN ACCORDANCE WITH ECN	EFFECTIVE DATE	REVISED BY	DATE	REFERENCE MODEL	REF REV	
DRW BY:	K. ROEMER	DRAWING STATUS: Released			TOLERANCES DO NOT APPLY DIMENSIONS ARE NOMINAL		SIZE B
DATE:	09-05-06	PRODUCTION APPROVED FOR RELEASED STATUS ONLY					ILC15910400 REV D

FORM FEG036, Rev. B