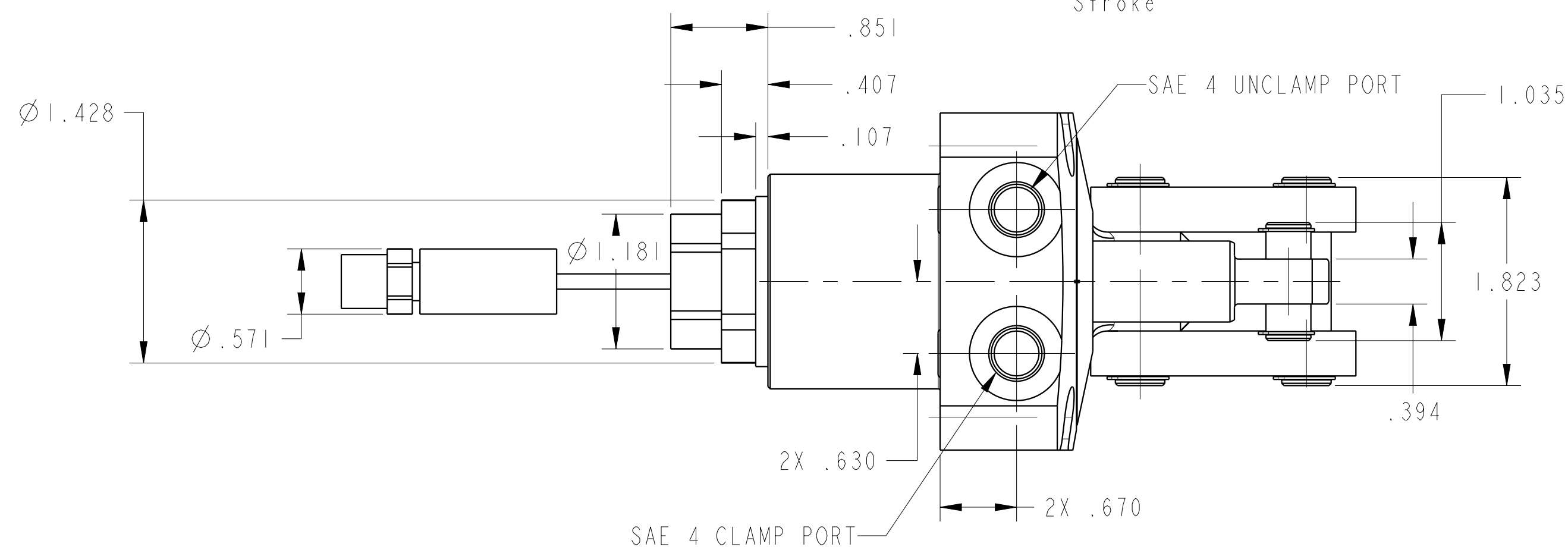
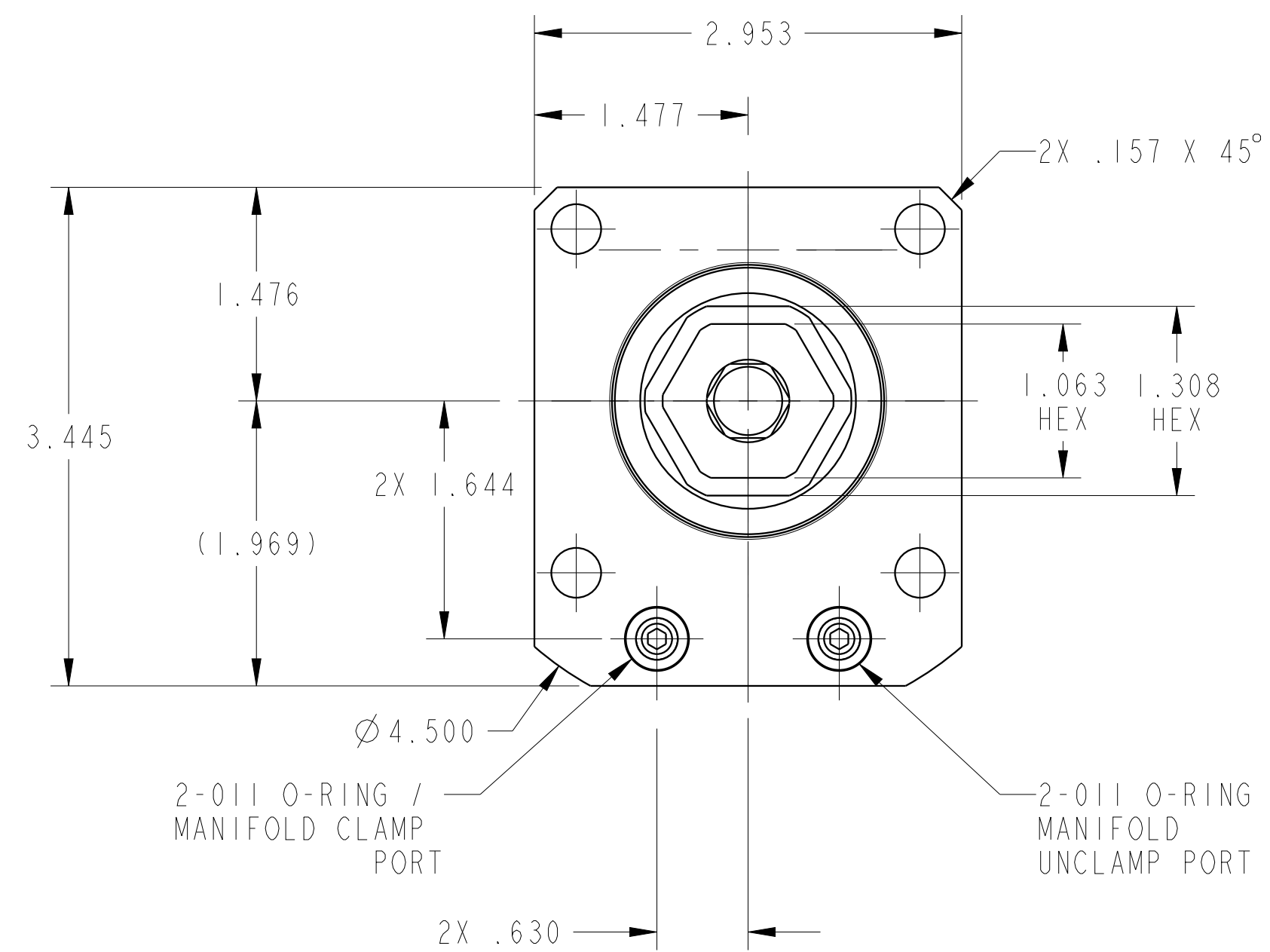


ILC16322200US REV A ECN 5529



CAD CONTROL  
DRAWING



VEKTEK, INC.  
1334 E. SIXTH AVE. P.O. BOX 625  
EMPORIA, KS. 66801 U.S.A.

A	5529	RELEASE	ALS	3/18/25
REV	IN ACCORDANCE WITH ECN	EFFECTIVE DATE	REVISED BY	DATE
DRW BY:	ALS	DRAWING STATUS: Released		
DATE:	10/10/24	PRODUCTION APPROVED FOR RELEASED STATUS ONLY		

16322200US	A
REFERENCE MODEL	REF REV
TOLERANCES DO NOT APPLY DIMENSIONS ARE NOMINAL	

LC, TL360, DA, 24001b, US
SIZE D
ILC16322200US
REV A

FORM FEG036, Rev. B