

1

2

3

4

D

D

C

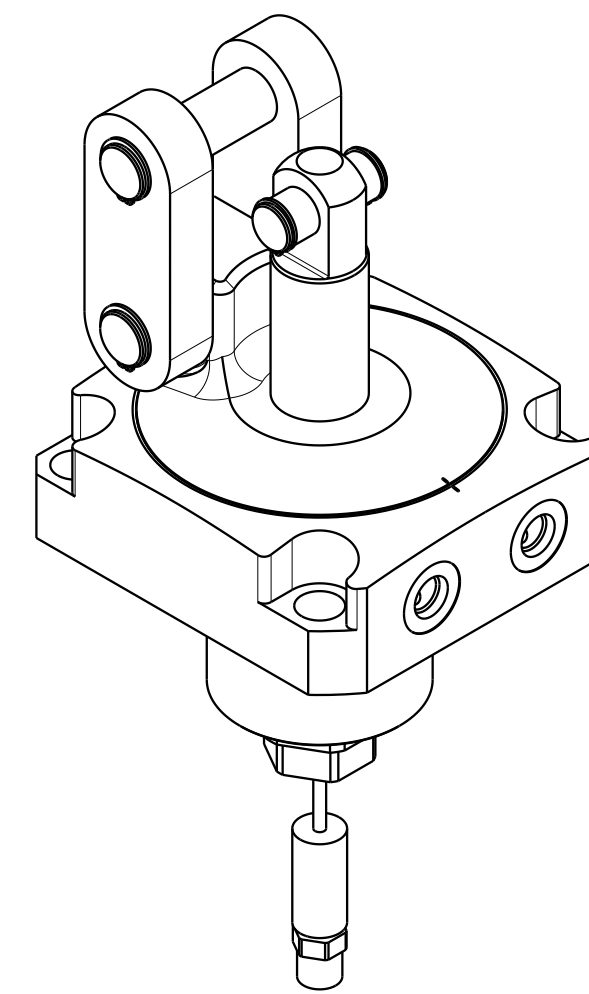
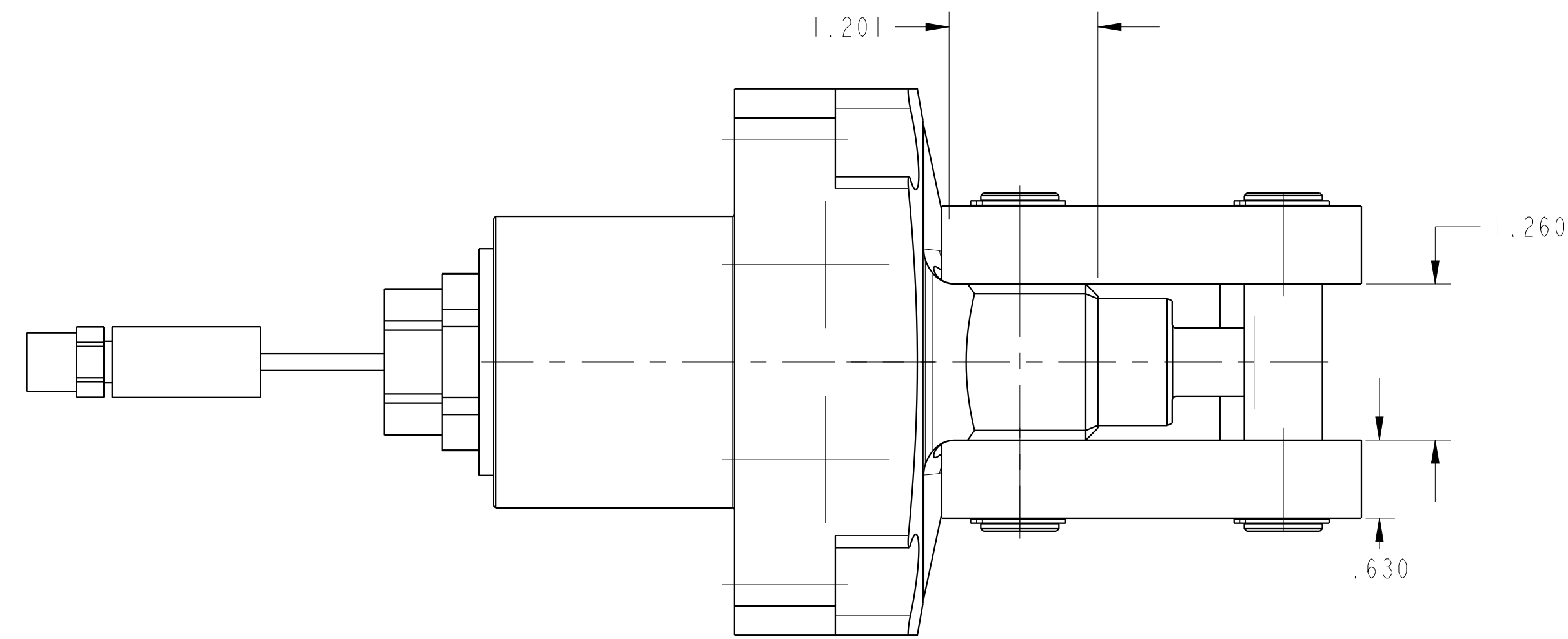
C

B

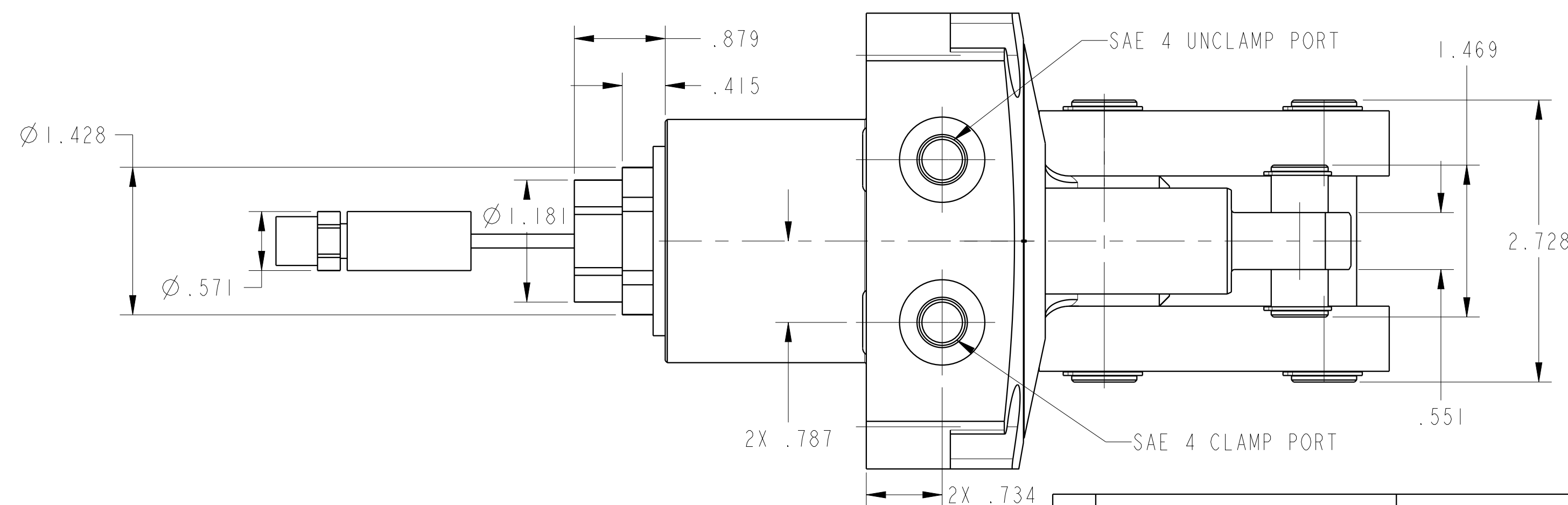
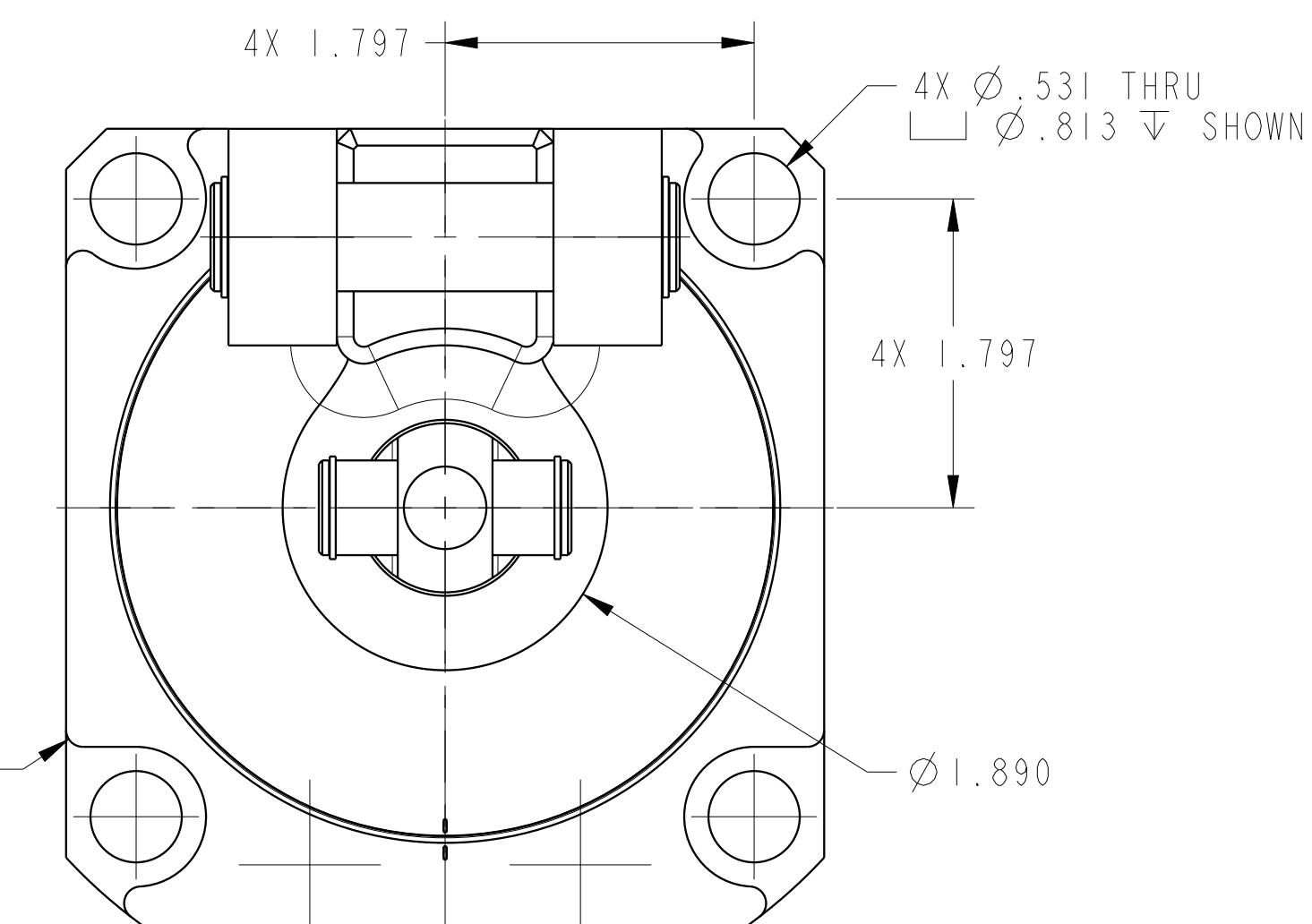
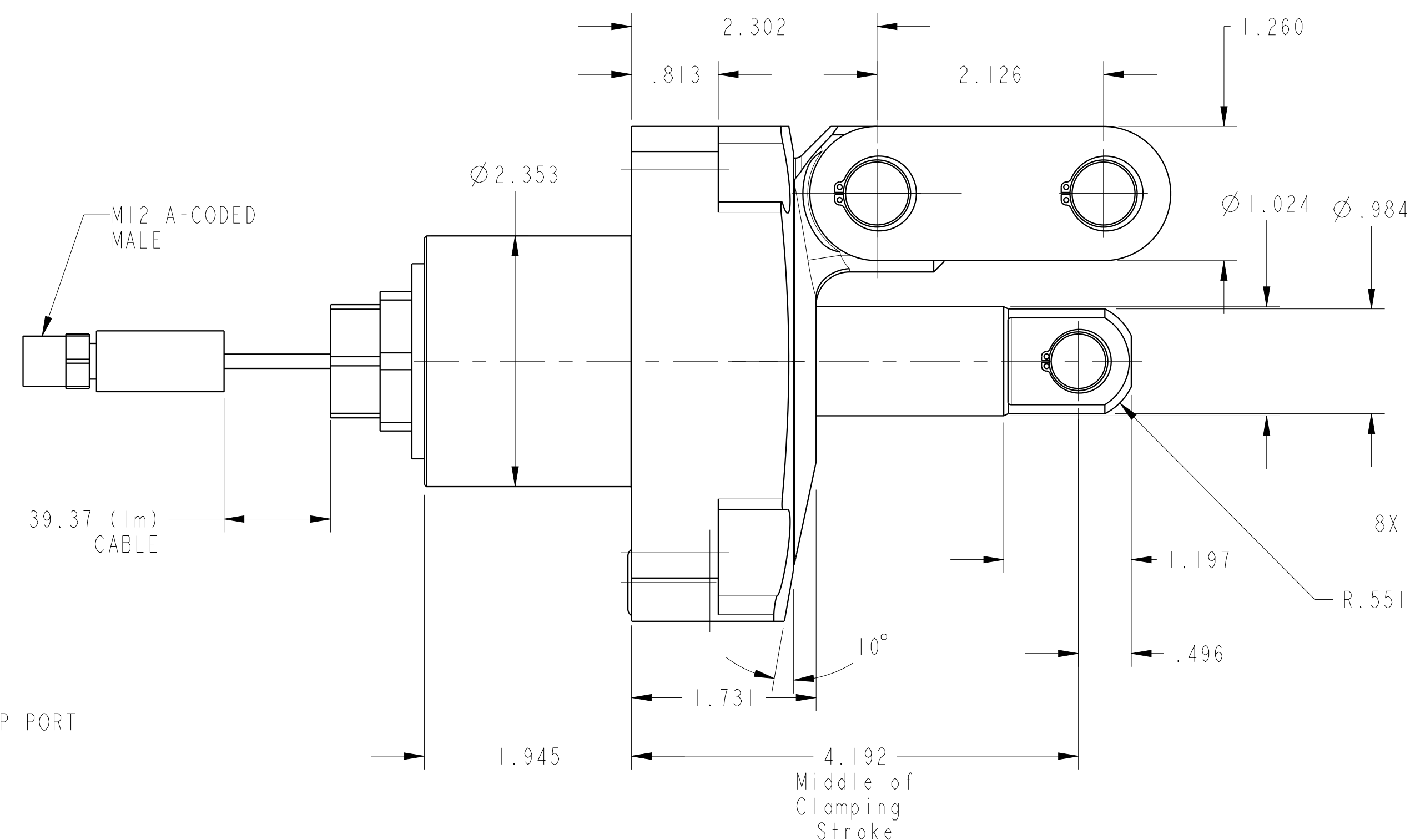
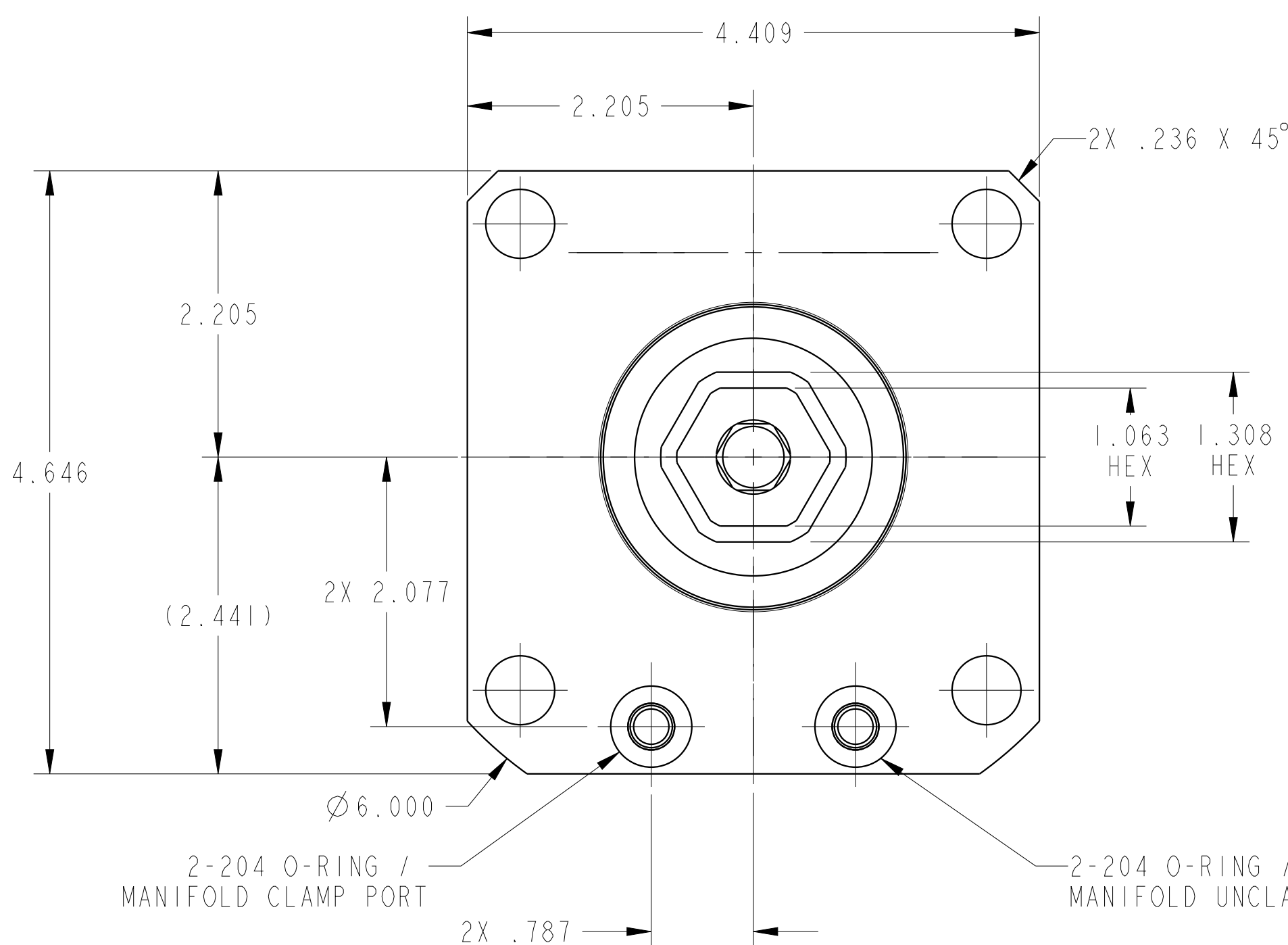
B

A

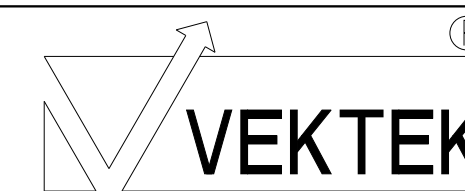
A



ILC16323200US REV A ECN 5529



CAD CONTROL DRAWING



VEKTEK, INC.  
1334 E. SIXTH AVE. P.O. BOX 625  
EMPORIA, KS. 66801 U.S.A.

A	5529	RELEASE	ALS	3/18/25
REV	IN ACCORDANCE WITH ECN	EFFECTIVE DATE	REVISED BY	DATE
DRW BY:	ALS	DRAWING STATUS: Released		
DATE:	10/10/24	PRODUCTION APPROVED FOR RELEASED STATUS ONLY		

16323200US	A	LC, TL360, DA, 50001b, US
REFERENCE MODEL	REF REV	
TOLERANCES DO NOT APPLY DIMENSIONS ARE NOMINAL		SIZE D

ILC16323200US	REV A
FORM FEG036, Rev. B	