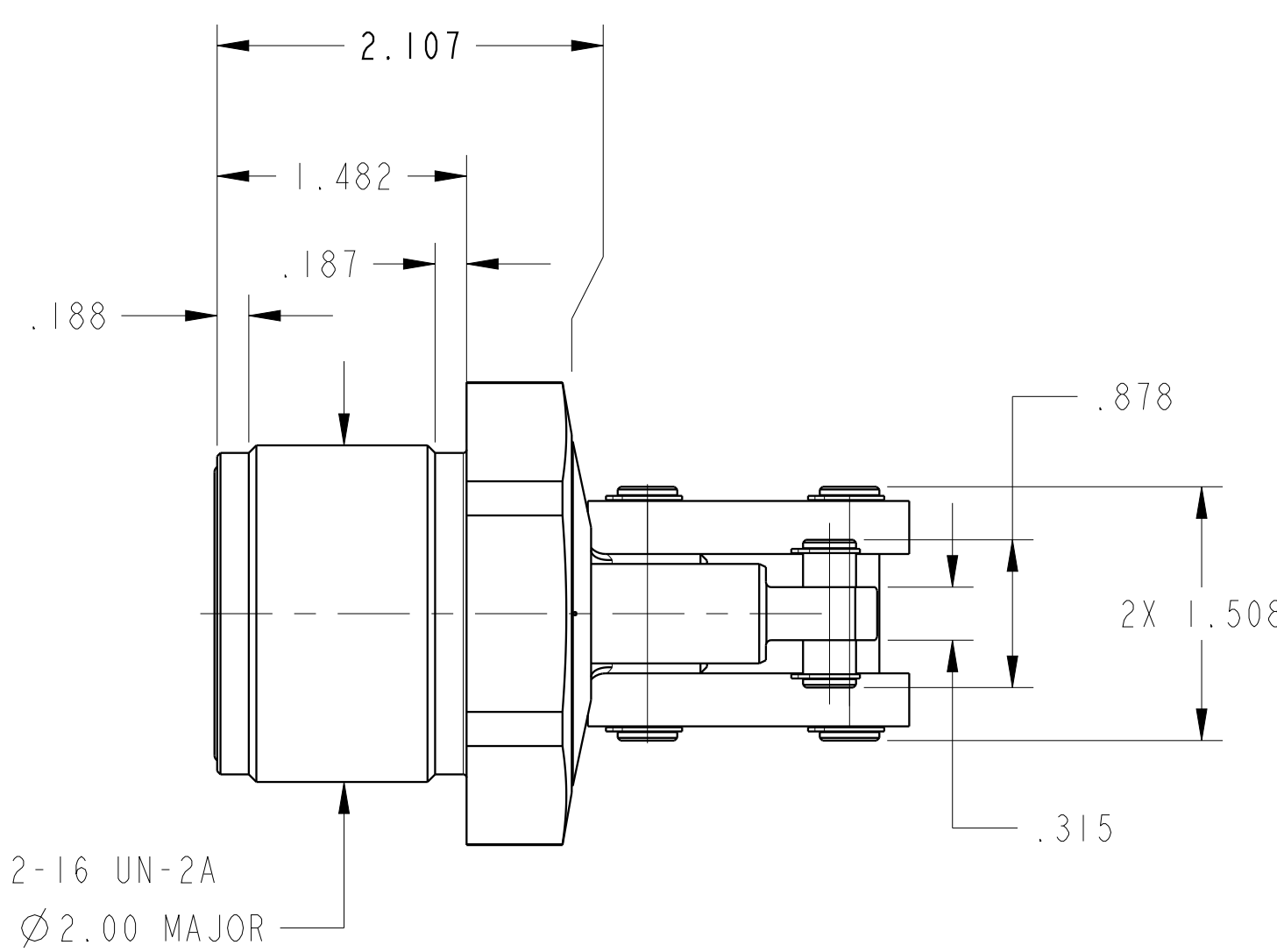
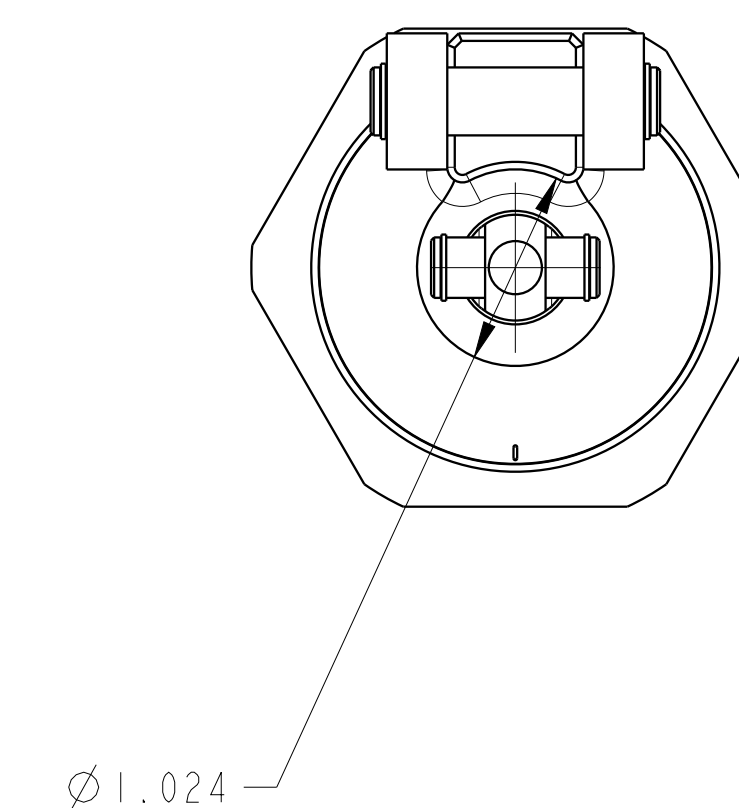
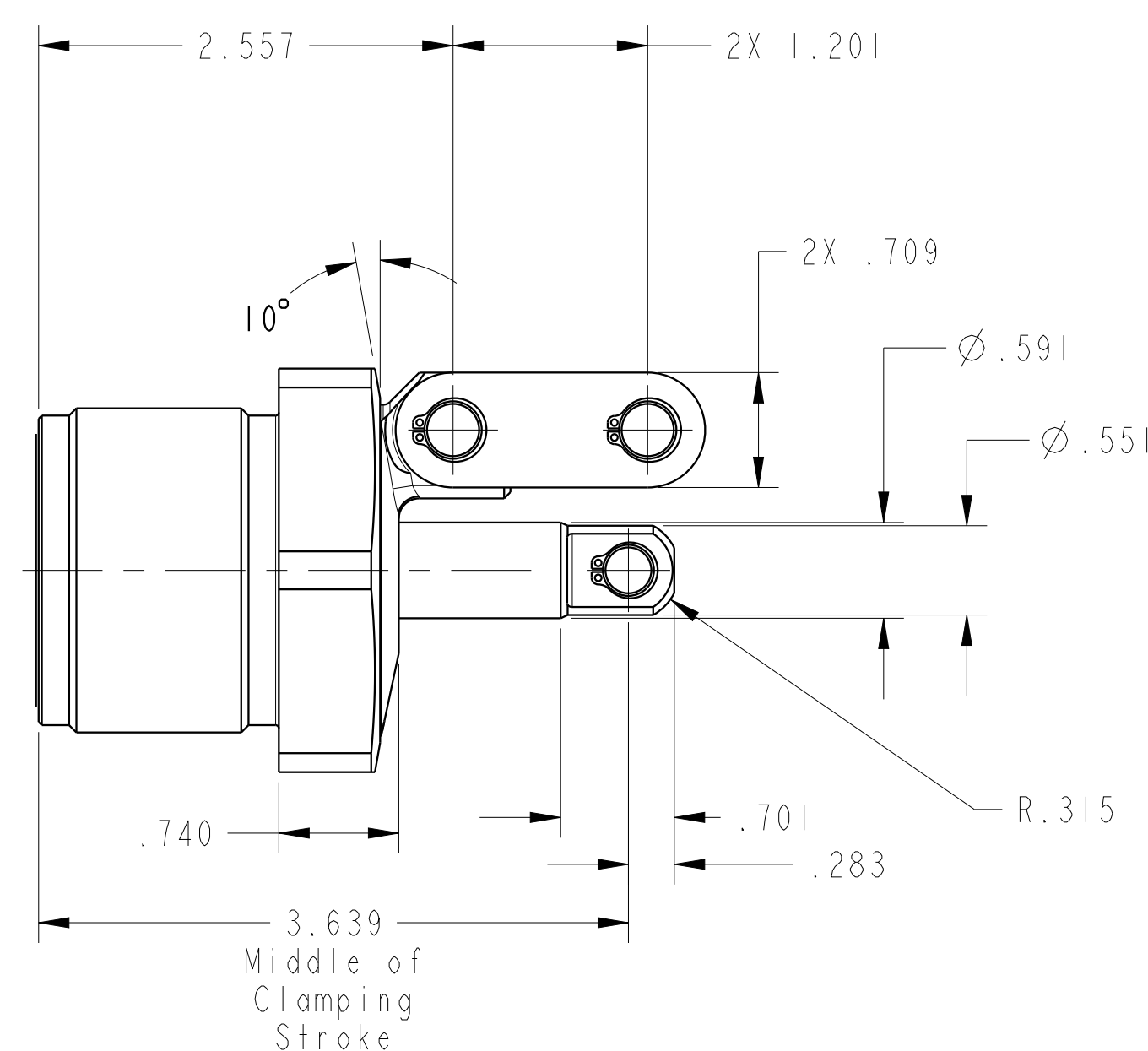
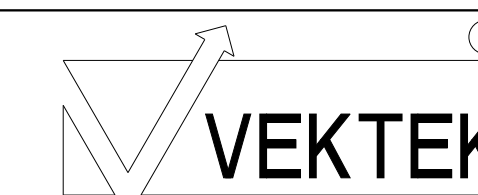


ILC16421800 REV A ECN 4195

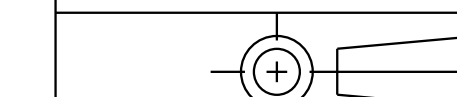


CAD CONTROL
DRAWING



VEKTEK, INC.
1334 E. SIXTH AVE. P.O. BOX 625
EMPORIA, KS. 66801 U.S.A.

A	4195	RELEASE	A. THOMSEN	3-JUN-2020
REV	IN ACCORDANCE WITH ECN	EFFECTIVE DATE	REVISED BY	DATE
DRW BY:	A. THOMSEN	DRAWING STATUS: Released		
DATE:	25-MAY-2020	PRODUCTION APPROVED FOR RELEASED STATUS ONLY		



TOLERANCES DO NOT APPLY
DIMENSIONS ARE NOMINAL

SIZE
D

LC, CM, TL360, DA, 14001b
ILC16421800 REV A

FORM FEG036, Rev. B